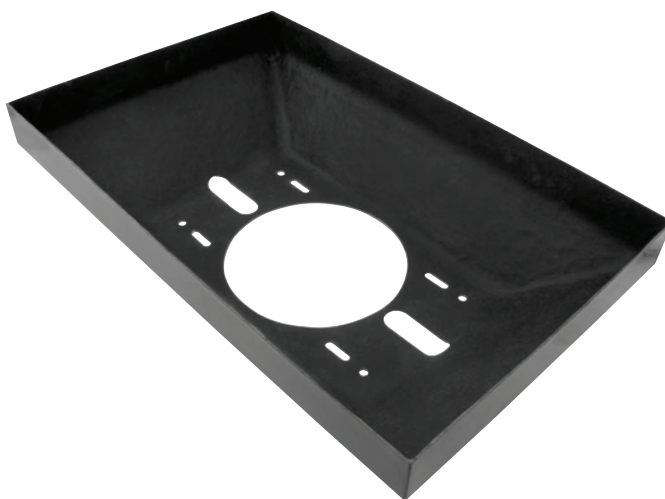




Part No. **ALL23288**

Dragster Scoop Tray

Fiberglass scoop tray is the lower portion of the scoop or plenum that directs air into the carburetor and provides a strong base for mounting Allstar Performance as well as other dragster scoops which are commonly fastened with quick turn fasteners. Tray fits most 4500 series carburetors and attaches to many popular scoop tray mounts. Tray measures 3" tall x 21-5/8" long x 13-1/2" wide.



REV081915

Shop for other custom hoods on our website.