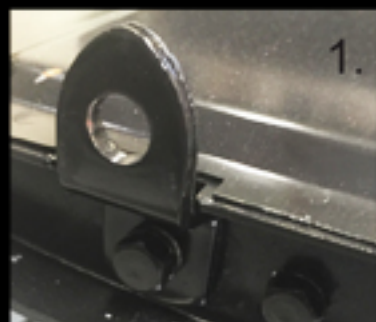
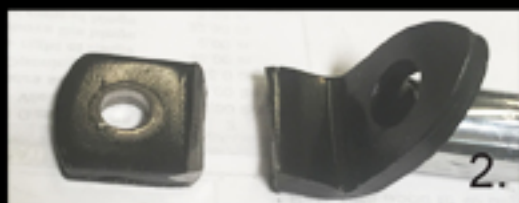


ALL AMERICAN BILLET Tailgate Latch Assembly Instructions

Note: Due to variances in 50-60 year old tailgates and aftermarket tailgates, this kit is designed for a universal fit. Some adjustments and/or other fabrication not listed in these instructions may be required.



1. Remove the old brackets off the tailgate.



2. If you are using an original tailgate, cut the bracket as shown (part of bracket will remain on the tailgate and act as a spacer). For aftermarket tailgates, you will use the spacer included with the kit.



3. Using the new tailgate bracket, mark the hole that needs to be cut out for the bracket/rod assembly.



4. Cut/drill/grind hole for bracket.



5. Check installation. (you may need to grind out more later for adjustment).



6. Repeat for other side

7. Mark the center of the tailgate at the top ridge as shown.

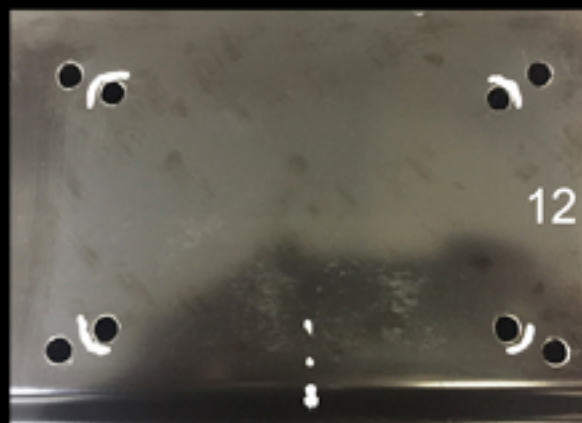
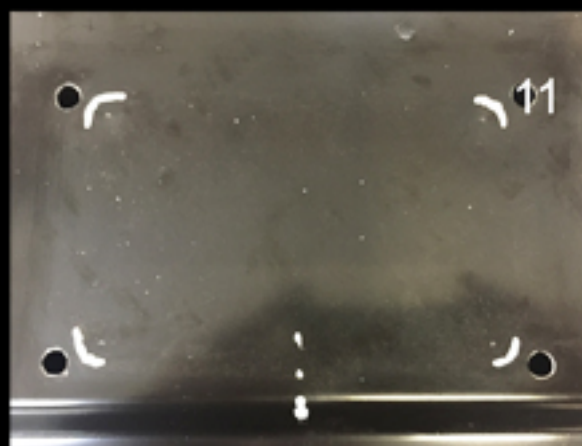
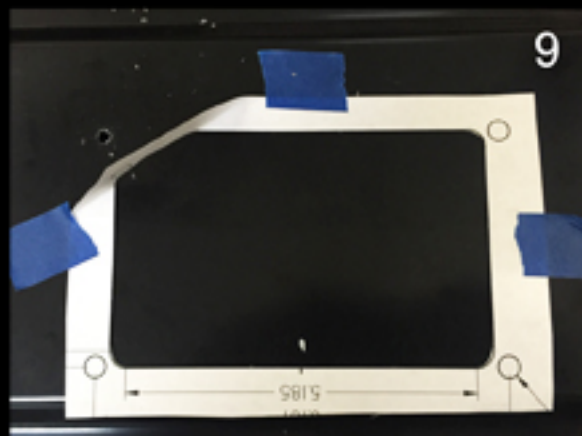
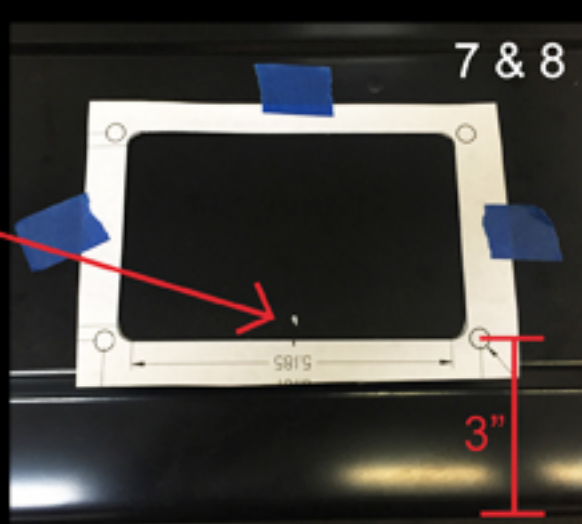
8. Cut out the template and center it with the mark. The top mounting holes should be 3" from the top of the tailgate. Once installed, the top of the cup should be right below the ridge on the tailgate.

9. Center punch and then drill the holes. You can fold over the corner of the template as shown.

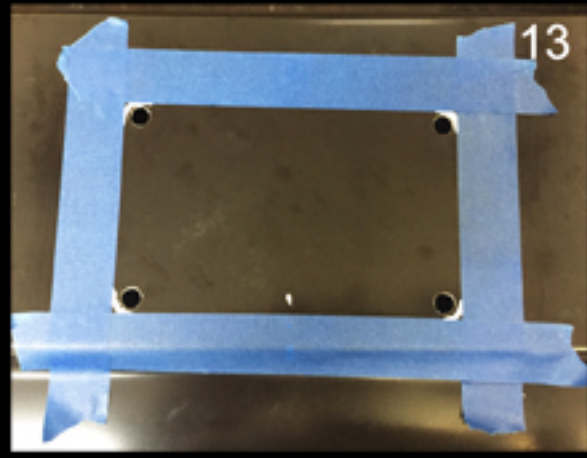
10. Repeat for other 3 holes.

11. Trace the inside corners of the template and then remove the template as shown.

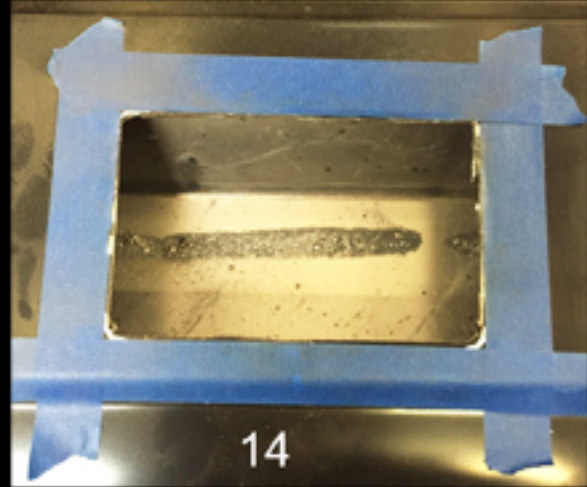
12. Drill 4 holes just inside the corners as shown.



13. Mask the area to be cut as shown.



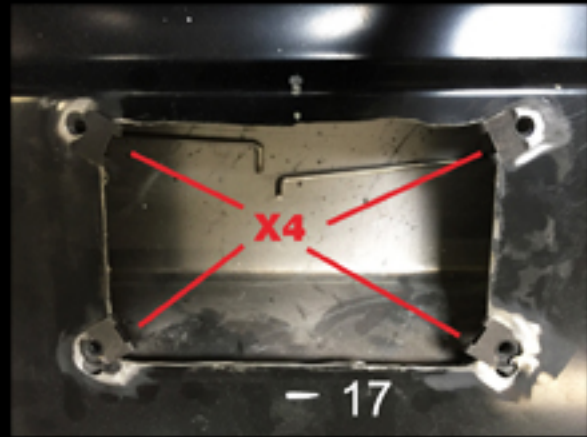
14. Cut out the area inside the masking tape.



15. Remove the masking tape and test fit the handle cup. Trim as needed.

16. Vacuum out the inside of the tailgate before final installation.

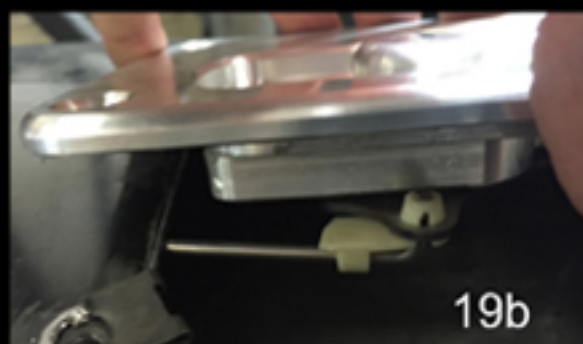
17. Install the 4 bolt retaining clips to the tailgate.



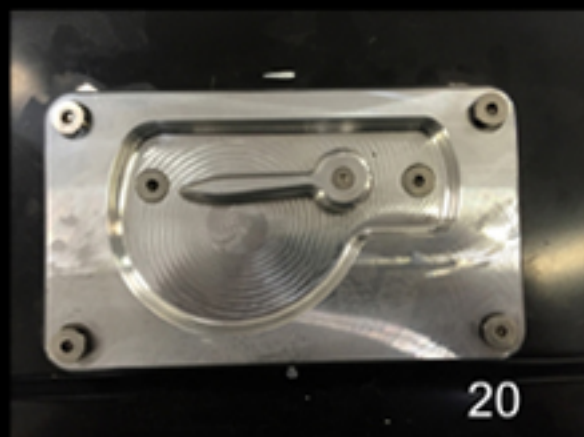
18. Install the tailgate brackets to each side. The longer rod goes on the drivers side of the tailgate, shorter on passenger side.



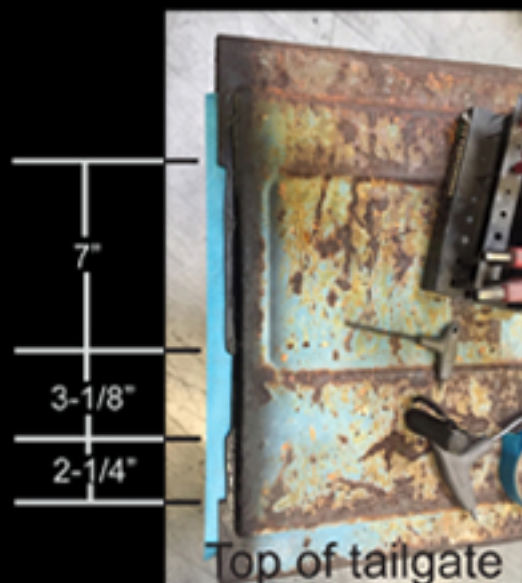
19. Connect the rods to the handle cup as shown. Drivers side rod connects to the top clip of the handle cup.



20. Install handle cup. Do not tighten bolts until all 4 bolts are started.



21. Cut the inside edge of the tailgate at each end as shown to allow the cables to travel correctly. Measurements are approximate. You may cut more or less depending on your tailgate and preference.



22. Install the brackets, with cables installed, to the bed of the truck.



22. Install the tailgate and adjust brackets as needed.

