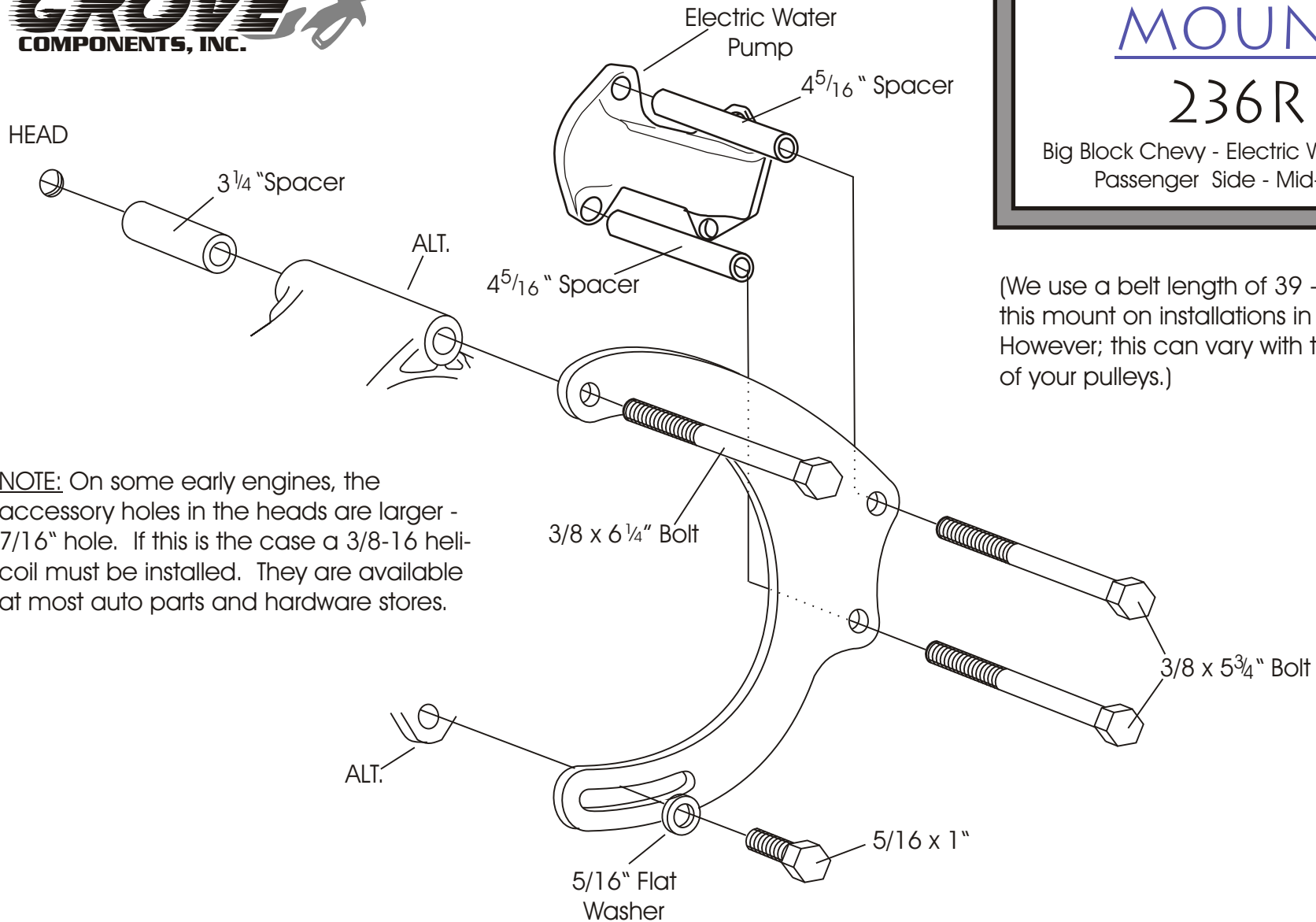




ALTERNATOR MOUNT

236R

Big Block Chevy - Electric Water Pump
Passenger Side - Mid-Mount



NOTE: On some early engines, the accessory holes in the heads are larger - 7/16" hole. If this is the case a 3/8-16 heli-coil must be installed. They are available at most auto parts and hardware stores.

(We use a belt length of 39 - 39 1/2" with this mount on installations in our shop. However; this can vary with the diameter of your pulleys.)

As with any part of this nature, make sure it fits your application before painting or plating. Parts that have been painted, plated or modified may not be returned.