

Bumper Installation Instructions

Body kit installation can relatively be an easy process; anyone with a little mechanical knowledge should be able to install parts in a few hours. Tools are also very standard, and if you have taken your factory bumper before, replacing it with an aftermarket piece should be no trouble at all.



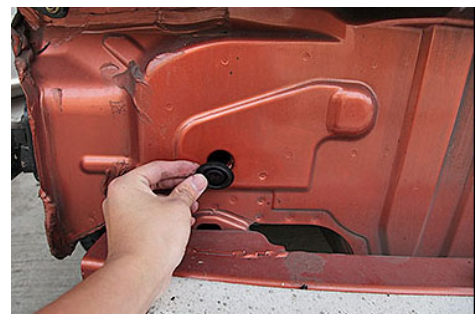
1. Inspect bumper for all bolts, screws and clips holding the bumper to the rest of the vehicle. (Make sure to have the proper tool to for disassembly.)



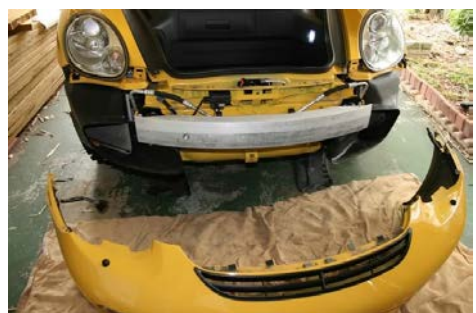
2. Proceed to remove all fasteners and the actually bumper or bumper cover.



3. As you start to test fit the new bumper, please make sure to inspect the section where the part will be place to make sure nothing interferes with the installation (i.e. hanging wires or hoses and splash shields, etc.)



4. Carefully proceed to install the new bumper, making sure that there are no interference from other components on the vehicle.



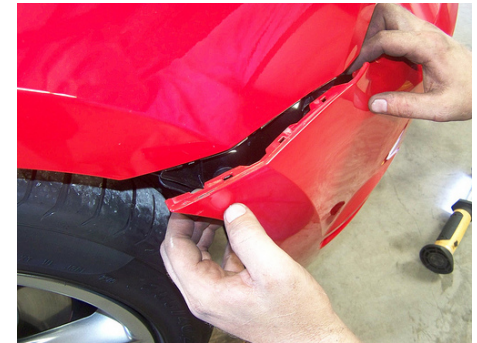
5. Some installation will require removal or repositioning of factory components, like impact absorbers, reinforcement bars, horns or fog lights. If any component is interfering with the installation, remove these components and proceed with test fitting the bumper. (Make sure to reinstall all vital components back in its place or new location. Some products are meant for show and off-road purposes only. Removal of any factory safety components are at your own risk.)



6. Most aftermarket bumpers are mounted the same way as the factory bumpers, so drilling the right hole in the proper location is key to having a good installation.



7. With the bumper mocked up in place, make sure it lines up properly with rest of the panels and lights of the vehicle. (Some areas of the bumper are purposely made with extra material to lower the risk of damage during transit. Some bumpers might need to be shaved or filed down in some areas to insure a good fitment.)



8. When you are satisfied with the fitment, mark the holes needed for the installation and cut or drill accordingly. (Be very precise in making hole, as this will determine the accuracy of the fitment to the other panels of the vehicle.)



9. After holes have been drilled, your part is now ready to be prep for paint. Because of the characteristic of FRP composites, you would need to block (sand and fill, etc.) the whole bumper to ensure smooth and even application of paint.



10. After the paint has dried, you are ready to install the bumper on to the vehicle. After part installation onto vehicle, you may wet sand the clear coat then buff to achieve the shine.



11. Check all other component that needs to be attached to the new bumper. If other existing factory parts are vital and will not attach to the new bumper, you will have to fabricate brackets or mounts to secure those parts.



12. Check if everything is secure and all parts installed. And you are done!



Note: We recommend professional installation for all parts. All parts are installed at your own risk. If you notice the part is considerably off, please do not drill or modified anyway, contact CARiD immediately for assistance.