



Installation Instructions

For Part Numbers:

- 450-172 700-466 Airaid Oiled Media Filter
- 451-172 701-466 SynthaMax Dry Media Filter - Red
- 452-172 702-466 SynthaMax Dry Media Filter - Black
- 453-172 703-466 SynthaMax Dry Media Filter - Blue

2005-09* Ford Mustang GT

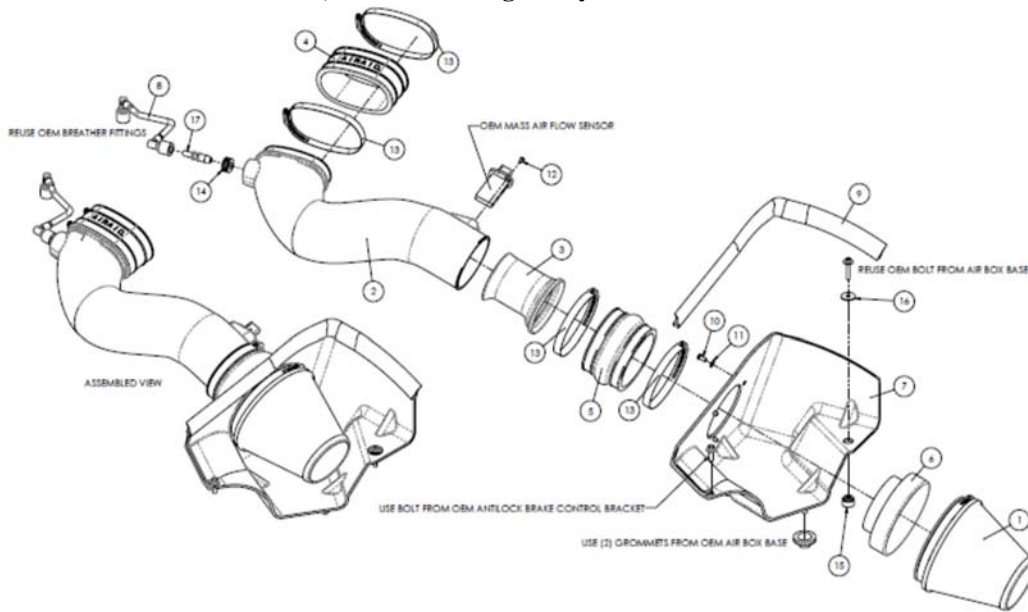
4.6L V8

*2007-2009 Mustang GTs are equipped with Hydrocarbon Adsorbers (HC) in the induction system and can not included in the California exemption.

Component Identification

1.	Airaid Premium Filter	1
2.	Airaid Intake Tube	1
3.	Modular Venturi Tube (MVT)	1
4.	Urethane Oval Coupler	1
5.	Urethane Hump Hose	1
6.	Filter Adapter	1
7.	Cool Air Dam	1
8.	3/8"x12" Hose	1
9.	Weather Strip 22"	1
10.	1/4-20 Button Head Bolt	3
11.	1/4" Flat Washer	3
12.	8-32 x 3/8" Button Head Bolt	2
13.	#72 Hose Clamp	4
14.	Grommet	1
15.	Aluminum Spacer	1
16.	1/4" Fender Washer	1
17.	Aluminum Fitting	1
18.	#20 Torx Bit	1

Please Note: In California, this intake is legal only on 2005 and 2006 models built after 4/30/2005.



INTAKE SYSTEMS FOR VEHICLES LISTED ARE 50 STATE LEGAL. SEE CARB STATUS ON EACH PART FOR A SPECIFIC VEHICLE.



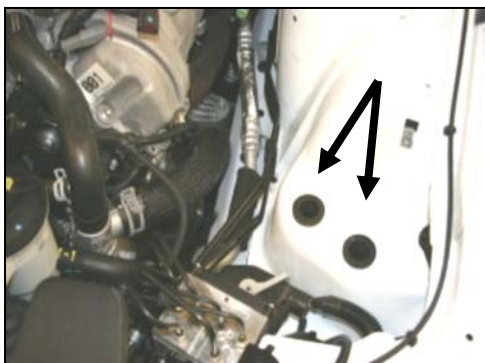
1. **Disconnect negative battery cable. PLEASE READ #22 ON THE BACK PAGE!!** Push the green plastic tabs, and remove breather hose from vehicle. (Save for later use).



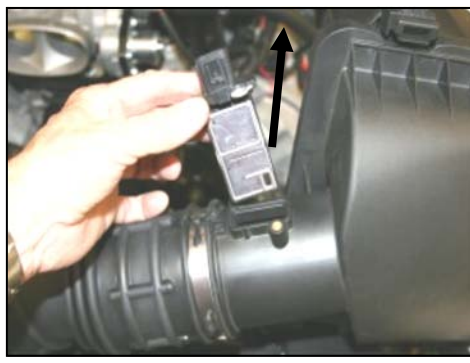
2. Loosen the intake tube hose clamp on the throttle body. Slide the red tab on the electrical connector, and disconnect the mass air sensor.



3. With a 10mm socket, remove the bolt holding the factory airbox to the fender and save the bolt. It will be reused



4. Remove the complete factory intake. Use caution to retain the factory grommets in the inner fender.



5. Using the provided #20 torx bit, remove two screws and the mass air sensor from the factory airbox lid. Note the direction of the sensor for proper re-installation later. (Save the mass air sensor for re-installation in step #13, the factory screws will not be re-used).



6. With a 10mm socket, remove and save the bolt from the anti-lock brake bracket. It will be re-installed later in step #9.



7. Install the air filter adapter (#6) into the Cool Air Dam (#7) as shown, using 3 button head bolts (#9) and 1/4" flat washers (#10).



8. Place the CAD into the inner fender, align the bolt holes and re-install the bolt from step #6.



9. Slide the Aluminum Spacer (#14) underneath the CAD and into the hole as shown. Secure the CAD to the inner fender using the OEM bolt from step #3 and the supplied 1/4" Fender Washer (#15).



10. Install the hump hose (#5) on the filter adapter (#6), with two #72 hose clamps (#13). Tighten only the clamp next to the CAD.



11. Install the supplied grommet (#14) and aluminum fitting (#17) into the Airaid intake tube as shown.



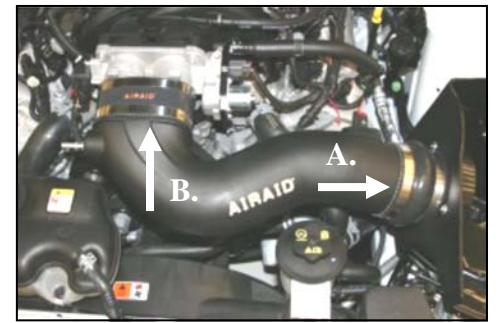
12. Install the Modular Venturi Tube (MVT) (#3) into the Airaid Intake Tube (#2) as shown. (SEE #22 BELOW!!)



13. Align the two slots in the tubes, and install the factory mass air sensor removed from step #5. Make sure the screw holes line up, then install the two supplied button head screws. (#13). **DO NOT USE THE FACTORY SCREWS!!**



14. Install the oval coupler (#4) with two #72 hose clamps (#13). Tighten only the clamp closest to the aluminum fitting. (Hint: For a clean look, locate the hose clamp tightening screws under the tube!)



15. A.) Install the tube into the hump hose. B.) Now slide the oval coupler onto the throttle body. Tighten the remaining two hose clamps, and re-connect the mass air sensor, from step #2.



16. Install the Airaid Premium Filter (#1) onto the filter adapter, and tighten the clamp. Install the weather strip (#9) on the top of the CAD as shown.



17. **VERY CAREFULLY!** Using a razor blade, cut the plastic tube off both of the factory breather hose ends as shown.



18. Install the 3/8"x12" hose (#8) onto the factory breather ends as shown.



19. Re-connect the breather line (#8) back to the factory locations as shown.

20. Double check your work!

Make sure there is no foreign material in the intake path. Make sure all clamps, hoses, bolts, and screws are tight. Double check the hood clearance!

21. Reconnect the negative battery cable!

22. Removal of the MVT from the intake tube makes this kit "For Racing Or Offroad Use Only", and not legal for on-road use in the State of California. Without the MVT installed, this intake system is not calibrated to any ECU and requires a custom tune for proper Mass Air Sensor functionality.

Thank you for purchasing the Airaid Intake System. Your Airaid Intake System was carefully inspected and packaged. Check that no parts are missing, or were damaged during shipping. If any parts are missing, contact Airaid. The air filter element is protected from direct exposure to wa-ter and debris; care should be taken not to drive through deep water. WATER INGESTION IS THE DRIVERS RESPONSIBILITY! The air filter is reusable and should be cleaned periodically.

FILTER IDENTIFICATION

700-466 Airaid Oiled Media
702-466 Airaid SynthaMax Dry Media - Black

701-466 Airaid SynthaMax Dry Media - Red
703-466 Airaid SynthaMax Dry Media - Blue

For your Oiled media filter we suggest using the AIRAID Filter Tune-Up Kit!



SynthaMax

Do Not Oil

Synthamax Air Filters do not require oil. Service air filter as needed by cleaning with common non-petroleum all-purpose household cleaner and water. Simple Green®, Formula 409® or equivalent works great. Apply cleaner to outside of air filter and allow to soak. Then flush filter clean from the inside out with a garden hose and repeat steps if necessary. Do not apply high pressure water or air to clean filter. Allow filter to air dry and reinstall.

P/N 790-551 Aerosol Spray
P/N 790-550 Squeeze Spray