



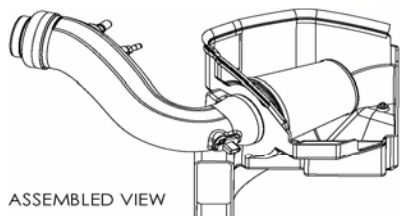
Installation Instructions

For Part Numbers:

- | | |
|---------|--|
| 450-265 | 700-458 Airaid Oiled Media Filter |
| 451-265 | 701-458 SynthaMax Dry Media Filter - Red |
| 452-265 | 702-458 SynthaMax Dry Media Filter - Black |
| 453-265 | 703-458 SynthaMax Dry Media Filter - Blue |

2011-14 Ford Mustang

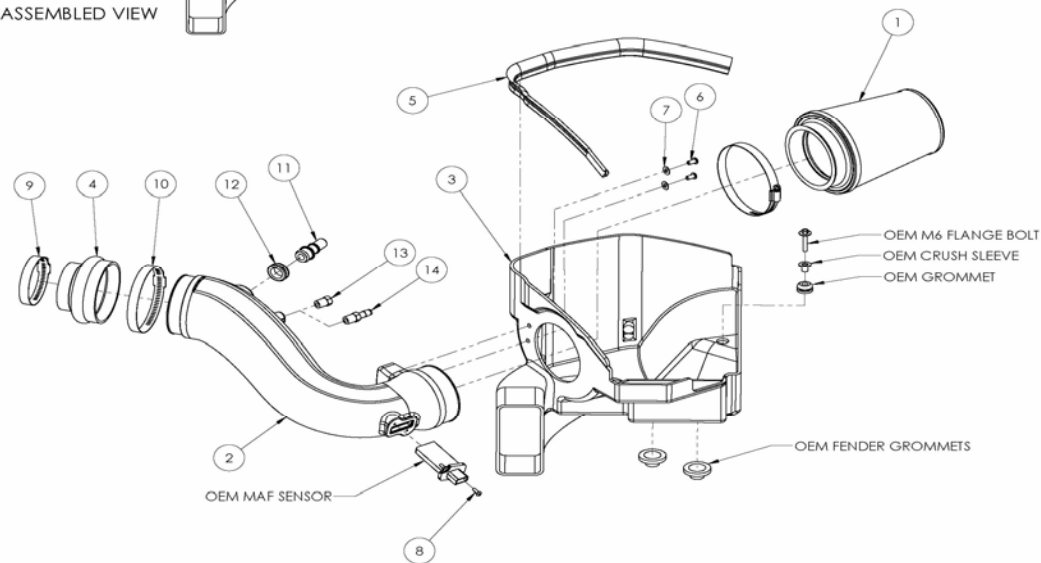
3.7L V6*



ASSEMBLED VIEW



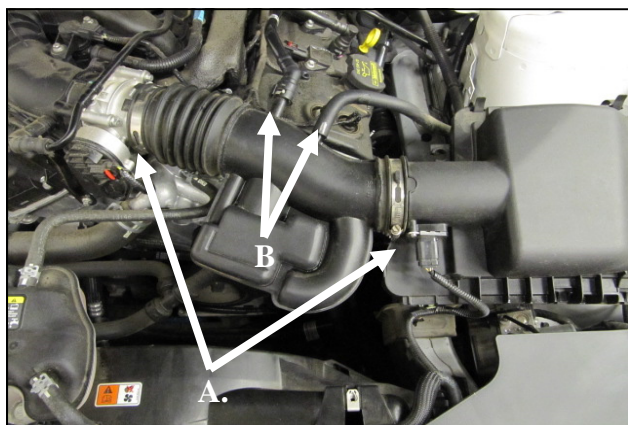
INTAKE SYSTEMS FOR VEHICLES LISTED ARE 50 STATE LEGAL. SEE CARB STATUS ON EACH PART FOR A SPECIFIC VEHICLE.



Component Identification

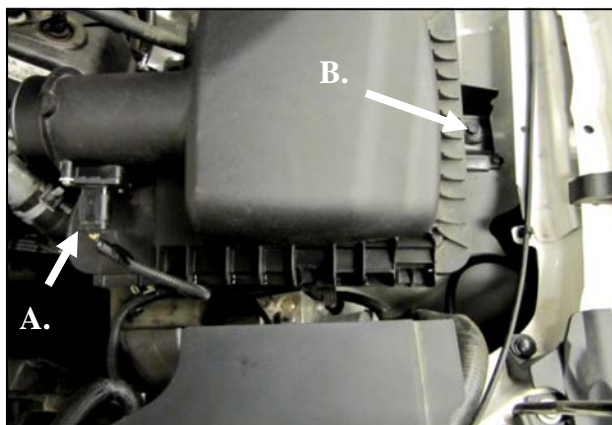
1.	Airaid Premium Filter	1
2.	Airaid Intake Tube	1
3.	Cold Air Box	1
4.	Silicone Hump Hose	1
5.	Weather Strip 25"	1
6.	1/4-20 Button Head Bolt	2
7.	1/4" Flat Washer	2
8.	8-32 x 1/2" Button Head Bolt	2
9.	#48 Hose Clamp	1
10.	#64 Hose Clamp	1
11.	5/8" Aluminum Fitting	1
12.	5/8" Grommet	1
13.	1/4" NPT plug	1
14.	1/4" NPT Barbed Fitting	1
15.	#20 Torx Driver	1
16.	Airaid Decal	1

Note: Because of space constraints, this Intake system can not to be used in conjunction with a throttlebody spacer.
* Vehicles equipped with the Ford Performance Package will need to have the engine cover trimmed for proper fit.

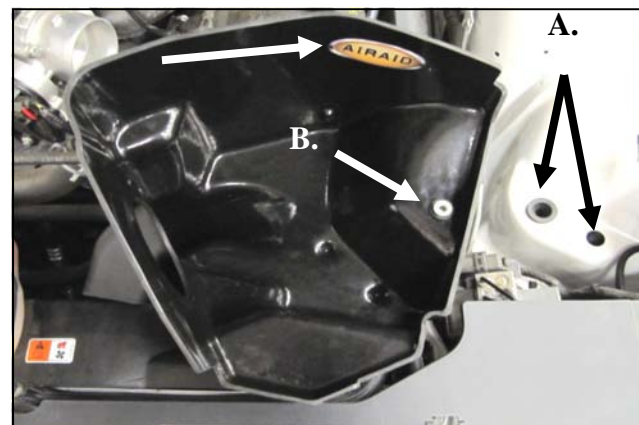


Disconnect The Negative Battery Terminal!

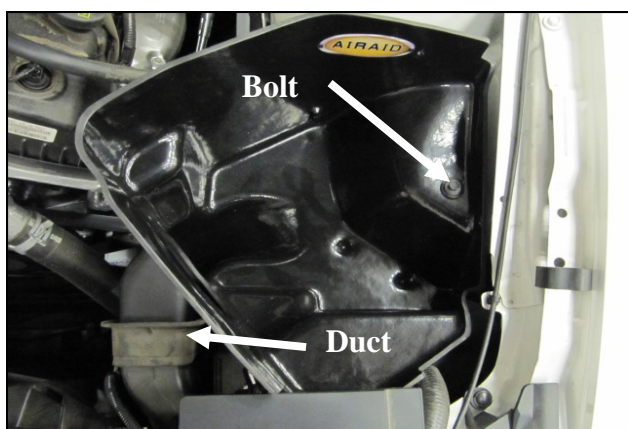
1. A) Loosen the hose clamps on the factory intake tube B) Carefully depress the hose lock tabs, and disconnect the crank case breather line and the brake aspirator line (if equipped, AT models only). C) Remove the factory intake tube.



2. A) Slide the red lock tab back, and disconnect the wiring harness from the Mass Air Flow sensor (MAF). Carefully pry the harness anchor from the air box using a screwdriver. B) Using a 10mm socket, remove the bolt securing the air box to the inner fender and remove the air box assembly. This bolt will be reused in step 4.



3. Transfer the factory air box mounting grommets. A) Locate and remove the two lower air box mounting grommets, and install them in the inner fender. B) Remove the Upper air box mounting grommet and steel sleeve, and re-install into the Airaid Cold Air Box, or CAB (#3). Apply the Airaid Decal inside of the CAB as shown.



4. Install the CAB into the vehicle. Make sure that the Air inlet of the CAB mates with the factory duct, and the two locating cones on the bottom mate with the factory grommets. Next reinstall the factory bolt that was removed in step #3 through the steel sleeve and grommet and into the inner fender.



5. Transfer the MAF sensor into the Airaid Intake Tube (#2) and secure using the supplied 8-32 Button Head Screws (#8).

Do Not Use The Factory Screws!



6. Install the Grommet and Fittings into the Airaid intake tube. A) All models will require the use of the 5/8" Fitting (#11) and the 5/8" Grommet (#12). B) Automatic transmission equipped vehicles will also use the 1/4" Barbed Fitting (#14). Manual transmission vehicles will not need the 1/4" Hose Fitting and will use the 1/4" Plug (#13).



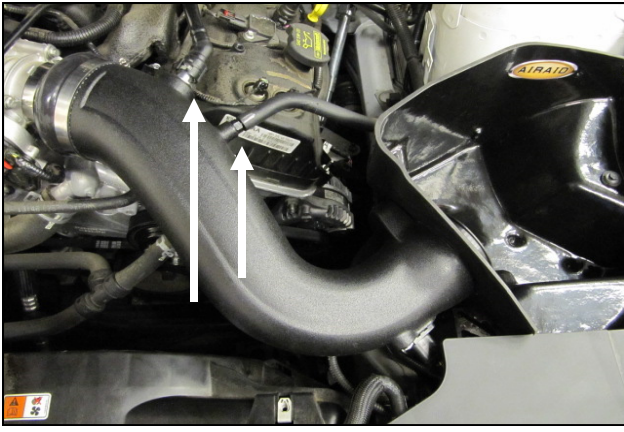
7. Slip the Hump Hose (#4) and Hose clamps onto the Airaid Intake Tube. Slide the #64 Hose Clamp (#10) onto the tube side and the #48 Hose Clamp (#9) onto the Engine side. Leave the Hose Clamps loose for now.



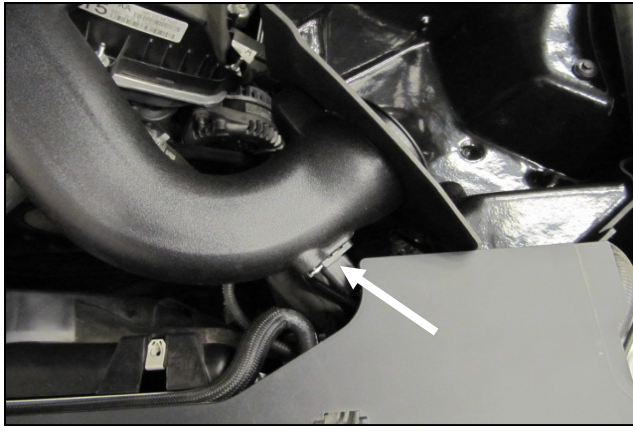
8. Insert the Intake Tube into the CAB first, then lower the Tube down and onto the throttlebody. Tighten the Hose Clamps.



9. Secure the Intake Tube to the CAB using the two 1/4" Button Head Bolts (#6) and 1/4" Washers (#7).



10. Reconnect the breather line or lines to the Hose Fittings depending on your application.



11. Reconnect the Mass Air Flow sensor. Slide the locking tab back into the connector.



12. Install the Airaid Premium Filter (#1) onto the Intake Tube and tighten the hose clamp.



13. Install the Weather Strip (#5) onto the CAB starting at one end and working your way around.

14. Double check your work!

Make sure there is no foreign material in the intake path. Make sure all clamps, hoses, bolts, and screws are tight. Double check the hood clearance!

Reconnect the negative battery cable!



For Performance Package equipped motors, it is recommended that the installer enlarge the breather cut out in the engine cover using a Dremel with a cut off wheel, then de burr for a professional look.

Thank you for purchasing the Airaid Intake System. Your Airaid Intake System was carefully inspected and packaged. Check that no parts are missing, or were damaged during shipping. If any parts are missing, contact Airaid. The air filter element is protected from direct exposure to water and debris; care should be taken not to drive through deep water. WATER INGESTION IS THE DRIVERS RESPONSIBILITY! The air filter is reusable and should be cleaned periodically.

FILTER IDENTIFICATION

700-458 Airaid Oiled Media
702-458 Airaid SynthaMax Dry Media - Black

701-458 Airaid SynthaMax Dry Media - Red
703-458 Airaid SynthaMax Dry Media - Blue

For your Oiled media filter we suggest using the AIRAID Filter Tune-Up Kit.



Do Not Oil



Synthamax Air Filters do not require oil. Service air filter as needed by cleaning with common non-petroleum all-purpose household cleaner and water. Simple Green®, Formula 409® or equivalent works great. Apply cleaner to outside of air filter and allow to soak. Then flush filter clean from the inside out with a garden hose and repeat steps if necessary. Do not apply high pressure water or air to clean filter. Allow filter to air dry and reinstall.

P/N 790-551 Aerosol Spray
P/N 790-550 Squeeze Spray