

Airaid

INSTALLATION INSTRUCTIONS

404-391 724-243 Airaid Oiled Media Filter

405-391 725-243 SynthaMax Dry Media Filter

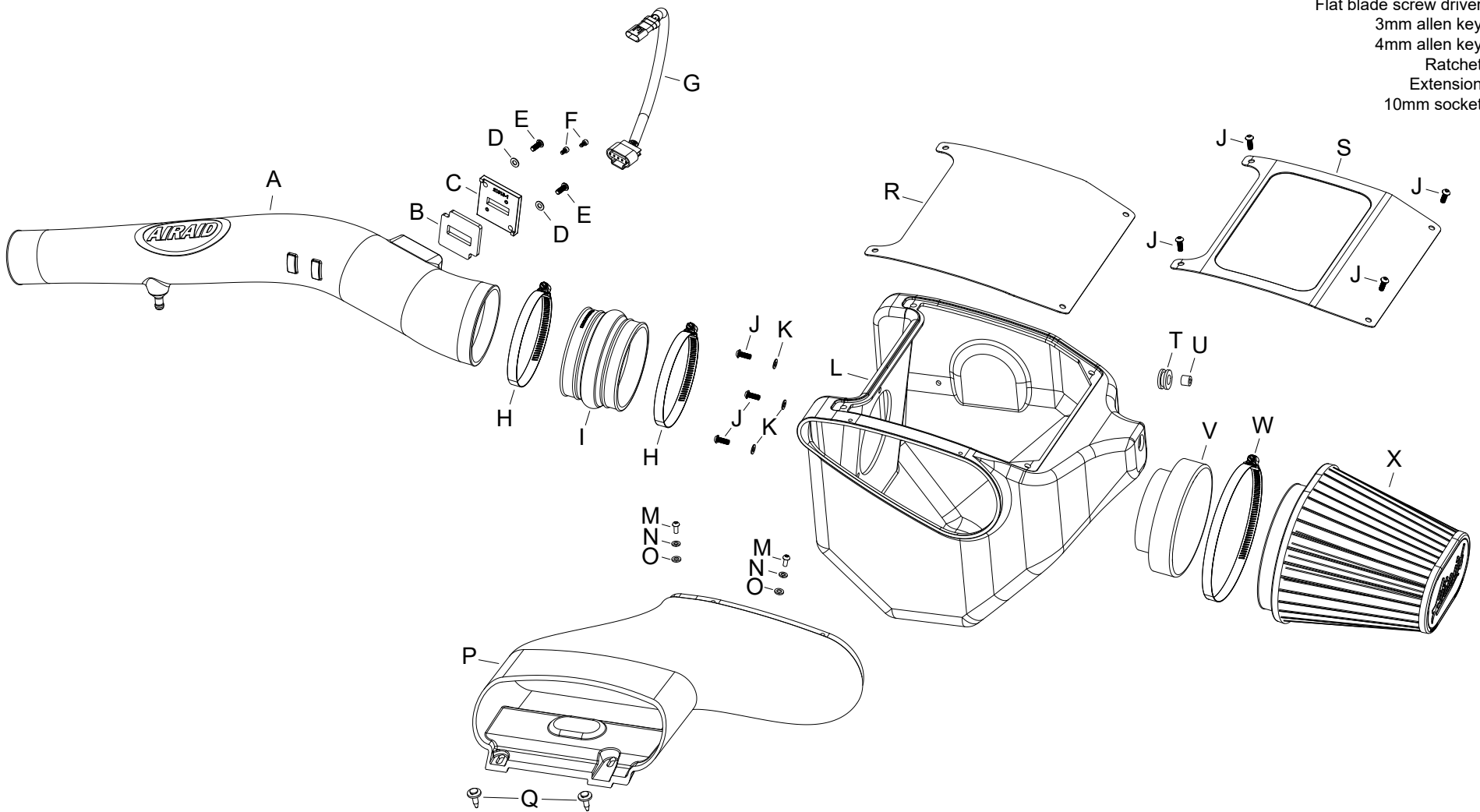
2018-19 FORD F150

V6-3.0L Turbo Diesel

NOT LEGAL FOR SALE OR USE ON ANY POLLUTION CONTROLLED MOTOR VEHICLE IN CALIFORNIA OR STATES ADOPTING CALIFORNIA EMISSION PROCEDURES.

TOOLS NEEDED:

Flat blade screw driver
3mm allen key
4mm allen key
Ratchet
Extension
10mm socket



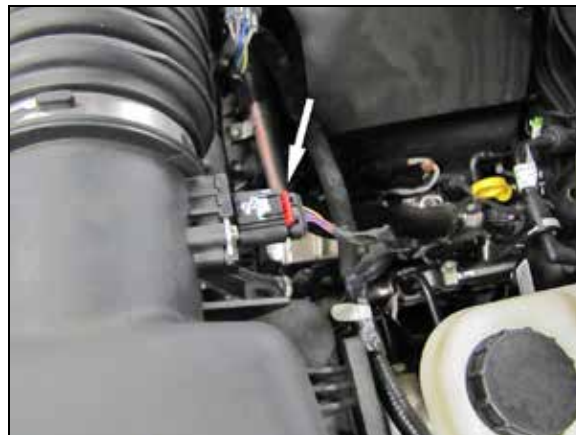
COMPONENT IDENTIFICATION

Description	Qty.	Part #	Description	Qty.	Part #	Description	Qty.	Part #
A TUBE; 400-391, MP, XLHDPE	1	87432	I HUMP HOSE; 4.25"ID X 3"L	1	KITHUMPHS05EPDM	Q CLIP; RETAINER BODY NYLON	2	KITRETCLIP02
B GASKET; 3/16" PORON	1	09069	J SCREW; 1/4-20 X 1/2"	7	KIT15DHC3050	R GASKET; 40%-293/338	1	KIT338G
C ADAPTOR; MAF SENSOR	1	21515-1	K WASHER; 1/4"ID X 5/8"OD	3	08275	S LID; 40%-293/338	1	KIT338LID
D WASHER; 6MM FLAT, SS	2	08269	L AIR BOX; COLD 40%-338	1	KIT338CAB	T GROMMET; (177)	1	KITGRMT20
E BOLT; M6 X 1.00 X 16MM, SS	2	07730	M SCREW; 8-32 X 5/8"	2	KIT15BHC3063	U SPACER; 382"ID X 5/8"OD	1	KITSPACER09
F BOLT; M4 - 0.7 8MM, A/H CAP	2	07733	N WASHER; #8, LOCK SPLIT	2	KIT15LW3016	V ADAPTER; MAF PLASTIC 112-1	1	KIT1121MAFADA
G MAF EXTENSION HARNESS	1	21780	O WASHER; #8, FLAT, 304SS	2	KIT15FW3016	W CLAMP; #104, 9/16", SS	1	KITHS104
H HOSE CLAMP #72	2	08671	P INLET; 40%-293/338	1	KIT338INLET	X CONE; 6" FLG 9" X 7-1/2"B	1	724/725-243

TO START:

1. Turn off the ignition and disconnect the negative battery cable.

NOTE: Disconnecting the negative battery cable erases pre-programmed electronic memories. Write down all memory settings before disconnecting the negative battery cable. Some radios will require an anti-theft code to be entered after the battery is reconnected. The anti-theft code is typically supplied with your owner's manual. In the event your vehicles anti-theft code cannot be recovered, contact an authorized dealership to obtain your vehicles anti-theft code.



2. Disconnect the mass air sensor electrical connection.



3. Disconnect the mass air wiring harness clip from the intake tube.

Continued...



4. Loosen the two hose clamps that secure the factory intake tube and then remove the tube from the vehicle.



5. Release the two clips that retain the factory upper air filter housing and then remove the upper housing from the vehicle.



6. Remove the two clips that secure the fresh air intake duct to the core support.



7. Disconnect the mass air sensor wiring harness from the lower air filter housing. Remove the bolt that secures the lower air filter housing to the inner fender and then remove the lower housing from the vehicle.

NOTE: AIRAID recommends that customers do not discard factory air intake.



8. Install the provided grommet and spacer into the AIRAID® air filter housing as shown.



9. Install the provided filter adapter into the AIRAID® air filter housing and secure with the provided hardware as shown.



10. Install the AIRAID® fresh air intake duct into the air filter housing and secure with the provided hardware.



11. Install the AIRAID® air filter housing assembly into the vehicle and secure with the provided hardware.



12. Install the provided hump coupler onto the filter adapter and secure with the provided hardware.



13. Install the provided gasket onto the mass air sensor adapter. Remove the mass air sensor from the factory housing and then install it into the AIRAID® adapter and secure with the provided hardware.



14. Install the mass air sensor adapter into the AIRAID intake tube and secure with the provided hardware.

NOTE: Be sure to install the sensor with the opening towards the filter end of the tube.



15. Install the AIRAID® intake tube into the factory turbo inlet coupler and the coupler at the filter adapter, adjust the tube for best fit and then secure with the provided hose clamps.



16. Install the gasket onto the bottom air filter housing lid.



17. Install the AIRAID® air filter onto the adapter and secure with the provided hose clamp and then install the air filter housing lid and secure with the provided hardware.



18. Reconnect the mass air sensor electrical connection.

Continued...



19. Secure the mass air sensor wiring clip to the intake tube.



20. Connect the two wiring harness clips to the AIRAID® air filter housing.



21. Double check your work!

Make sure there is no foreign material in the intake path. Make sure all clamps, hoses, bolts, and screws are tight. Double check the hood clearance!
Reconnect the negative battery cable!