



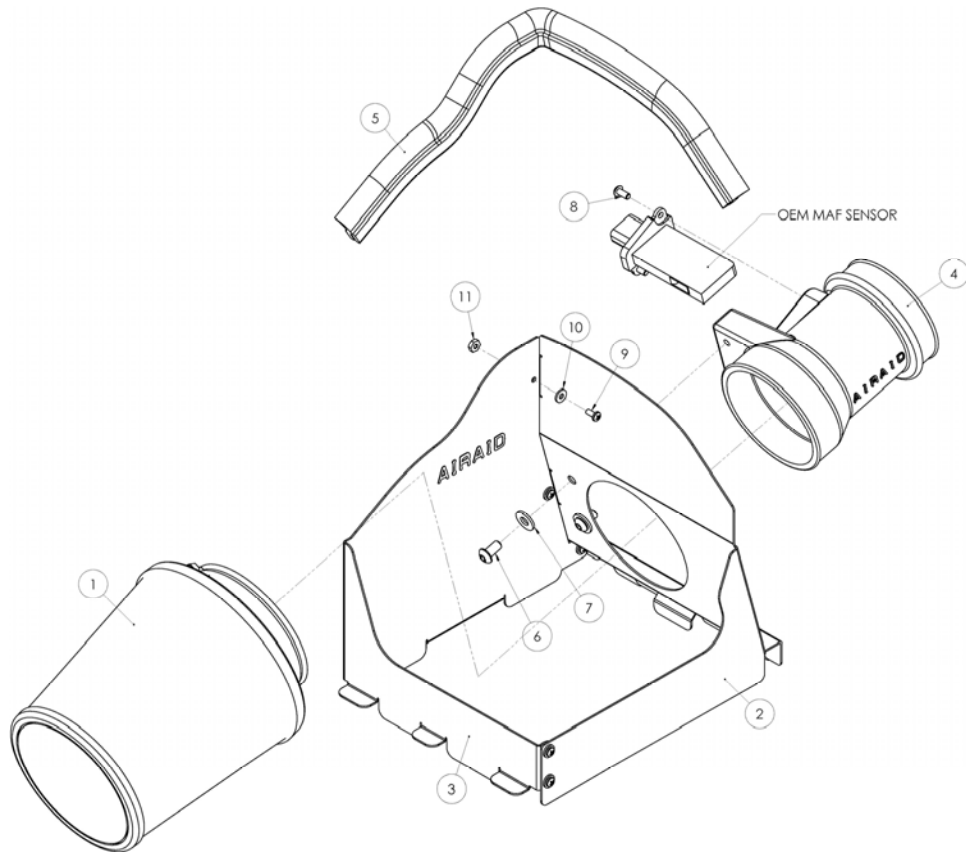
Installation Instructions

For Part Numbers:

400-194	700-452 Airaid Oiled Media Filter
401-194	701-452 SynthaMax Dry Media Filter - Red
403-194	703-452 SynthaMax Dry Media Filter - Blue

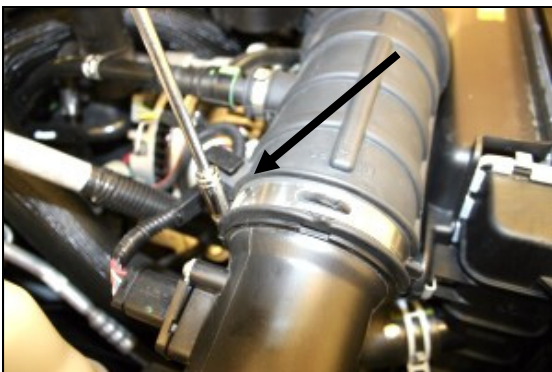
2004-11 Ford Ranger
4.0L V6

INTAKE SYSTEMS FOR VEHICLES LISTED ARE 50 STATE LEGAL. SEE CARB STATUS ON EACH PART FOR A SPECIFIC VEHICLE.



Component Identification

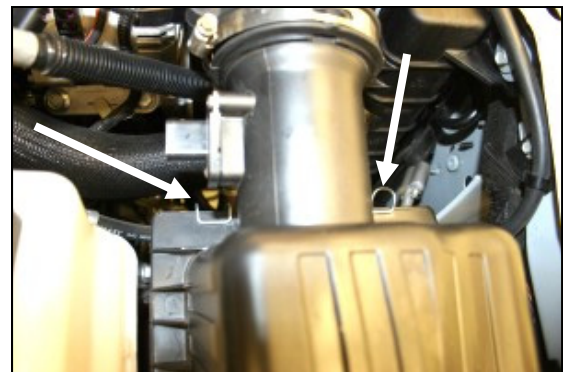
1.	Airaid Premium Filter	1
2.	MAF Panel	1
3.	Back Panel	1
4.	MAF Adapter	1
5.	Weather Strip 16 1/4"	1
6.	1/4"-20x1/2" Button Head Bolt	2
7.	1/4" Flat Washer	2
8.	8-32x3/8" Button Head Screw	2
9.	6-32x5/16" Screw	5
10.	#6 Flat Washer	5
11.	6-32 Keps Nut	5
12.	#20 Torx Bit	1
13.	Airaid Decal	1



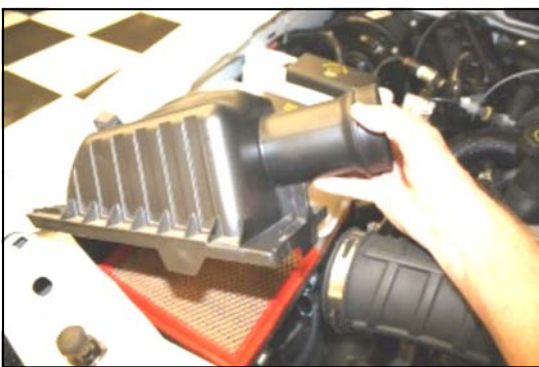
1. **Disconnect the negative battery cable.** Loosen the hose clamp that holds the factory intake tube to the air cleaner lid.



2. Slide the red tab on the bottom of the Mass Air Flow sensor wiring connector and then squeeze the connector, and unplug the harness from the sensor.



3. Unlatch the two metal clips that hold the factory air cleaner lid to the base.



4. Slide the factory intake tube off of the factory air cleaner lid, and remove the lid from the vehicle.



5. Remove the factory air filter from the factory air cleaner base.



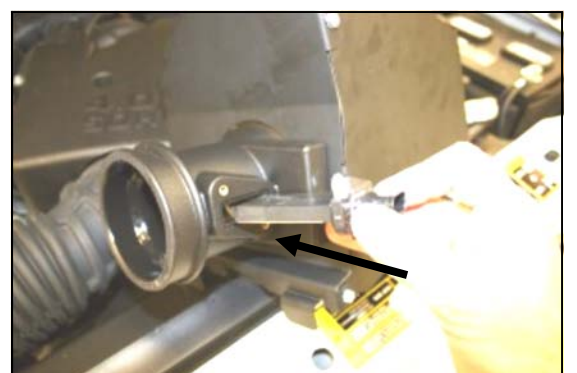
6. Using the supplied #20 Torx bit, remove two screws, and remove the Mass Air Flow sensor from the factory air cleaner lid. Save the MAF sensor for later use in step #9.



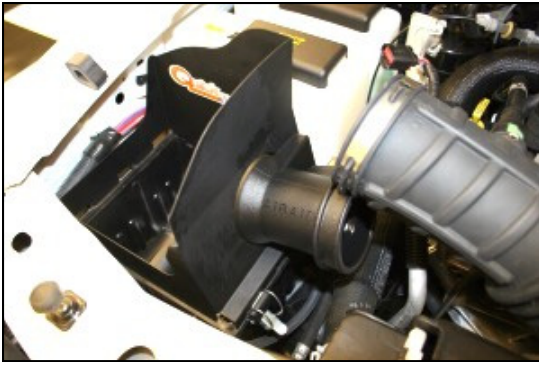
7. Assemble the two Quick Fit Panels (#2&3), using five 6-32 screws (#9), #6 flat washers (#10), and nuts (#11). Apply the Airaid Foil Decal onto the Panel as shown.



8. Install the MAF adapter (#4) into the Quick Fit Panels, using two 1/4" button head bolts (#6), and 1/4" flat washers (#7).



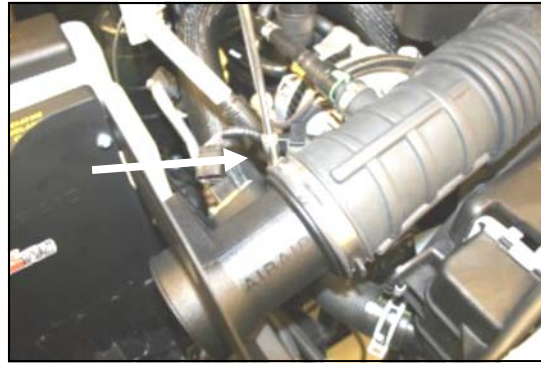
9. Reinstall the factory MAF sensor removed in step #6, into the Airaid MAF adapter as shown using two 8-32 button head screws provided in the kit. **Do Not Use The Factory Screws!!**



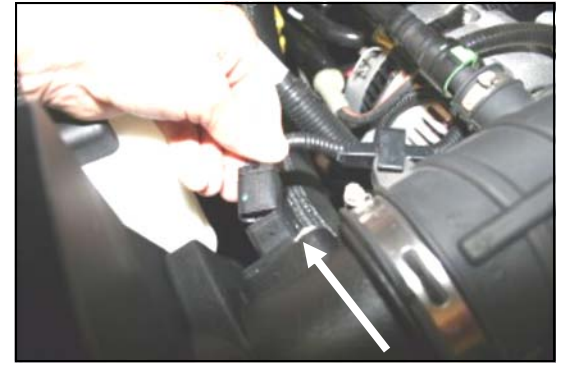
10. Install the Quick Fit Assembly onto the top of the factory air cleaner base. Start by sliding the three tabs on the Airaid panel thru the three slots on the top of the base. Center the panel assembly, and re-latch the two factory clips.



13. Install the Airaid Premium Filter (#1) into the MAF adapter, and tighten the hose clamp. Next install the weather strip (#5) onto the top of the Quick Fit Panels as shown.



11. Reconnect the factory intake tube to the Airaid MAF adapter, and then tighten the hose clamp.



12. Reconnect the wiring harness to the MAF sensor.

14. Double check your work!

Make sure there is no foreign material in the intake path. Make sure all clamps, hoses, bolts, and screws are tight. Periodically check the tightness of all hose clamps. Double check the hood clearance.

15. Reconnect the negative battery cable!

Thank you for purchasing the Airaid Intake System. Your Airaid Intake System was carefully inspected and packaged. Check that no parts are missing, or were damaged during shipping. If any parts are missing, contact Airaid.

The air filter element is protected from direct exposure to water and debris; care should be taken not to drive through deep water. **WATER INGESTION IS THE DRIVERS RESPONSIBILITY!** The air filter is reusable and should be cleaned periodically.

FILTER IDENTIFICATION

700-452 Airaid Oiled Media

703-452 Airaid Synthamax Dry Media - Blue

701-452 Airaid Synthamax Dry Media - Red

For your Oiled media filter we suggest using the AIRAID Filter Tune-Up Kit!



P/N 790-551 Aerosol Spray
P/N 790-550 Squeeze Spray



Do Not Oil

Synthamax Air Filters do not require oil. Service air filter as needed by cleaning with common non-petroleum all-purpose household cleaner and water. Simple Green®, Formula 409® or equivalent works great. Apply cleaner to outside of air filter and allow to soak. Then flush filter clean from the inside out with a garden hose and repeat steps if necessary. Do not apply high pressure water or air to clean filter. Allow filter to air dry and reinstall.