



## Installation Instructions

For Part Numbers:

- 310-137 700-451 Airaid Oiled Media Filter
- 311-137 701-451 SynthaMax Dry Media Filter - Red
- 312-137 702-451 SynthaMax Dry Media Filter - Black
- 313-137 703-451 SynthaMax Dry Media Filter - Blue

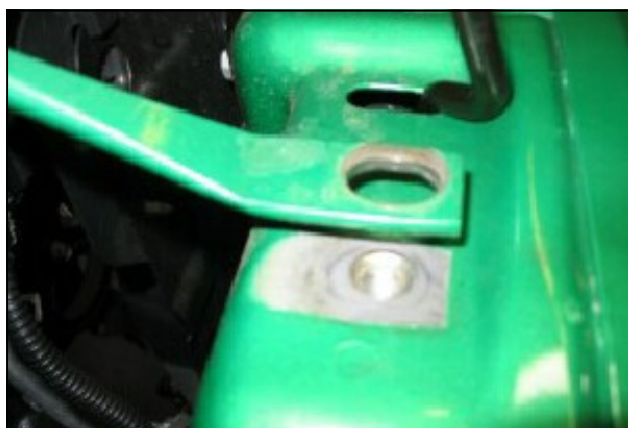
2003-06 Jeep Wrangler  
2.4L I4

**INTAKE SYSTEMS FOR VEHICLES LISTED ARE 50 STATE LEGAL. SEE CARB STATUS ON EACH PART FOR A SPECIFIC VEHICLE.**

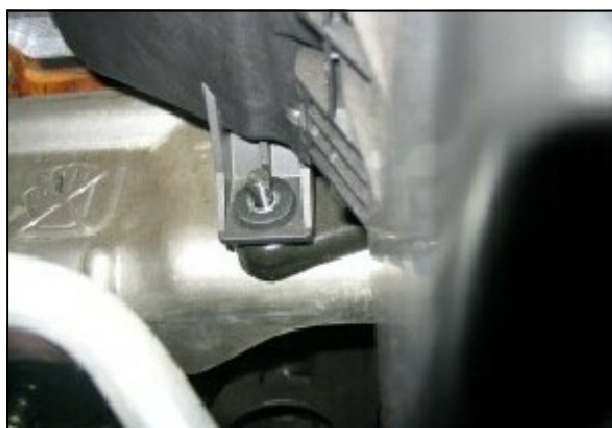


### Component Identification

1.	Airaid Premium Filter	1
2.	Cool Air Panel	1
3.	Cool Air Panel	1
4.	Black Plastic Intake Tube	1
5.	Weather Strip 24 1/4"	1
6.	1/4-20 Head Cap Bolt	2
7.	1/4" Flat Washer	4
8.	#6 Flat Washer	4
9.	6-32 Keps Nut	4
10.	6-32 x 5/16" Screw	4
11.	1/4-20 x 1/2" Hex Bolt	1
12.	1/4-20 Hex Nut	1
13.	Grommet	1



1. Disconnect the negative battery cable. Remove bolt for radiator support rod. (Note: Retain bolt for later use.)



2. Loosen hose clamp attaching air filter assembly to throttle body. Using a 1/2" socket, remove bolt on back side of air filter assembly.



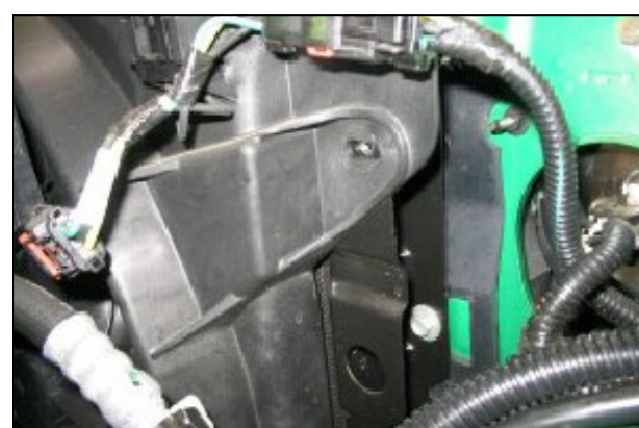
3. Disconnect the breather hose from the factory air box silencer. (Note: Retain hose for later use.)



4. Remove air filter assembly from engine compartment. Retain rubber throttle body coupler for later use.



5. Using a flat blade screwdriver, unclip the fuse box from the bracket and set aside. Using 10mm socket, remove bolt from bracket. (Note: Retain bolt for later use.)



6. Using a 7/16" socket, remove the bolt located on the radiator fan cover on the passenger side. (Note: Retain bolt for later use.)



7. Using the supplied hardware, assemble the two Airaid panels as shown.



8. Position Airaid Cool Air Dam in place by inserting factory radiator support rod through grommet as shown.



9. Reinstall original bolt through Airaid Cool Air Dam and factory fuse block bracket. Replace fuse block on bracket.





**10.** Using a 7/16" socket, reinstall the original bolt through the Airaid Cool Air Dam and radiator fan cover.



**11.** Using the supplied hardware and 7/16" socket, fasten the front of the Airaid Cool Air Dam to the fender.



**12.** Using a 1/2" socket, reinstall the original bolt on the radiator support rod.



**13.** Install factory throttle body coupler on end of Airaid intake tube and position assembly on engine as shown. Mount Airaid intake tube to Cool Air Dam using two supplied 1/4"-20 bolts and washers provided. Connect factory breather hose to Airaid intake tube.



**14.** Install the Airaid filter on the end of the intake tube. Install the weather strip on the top edge of the Cool Air Dam. (Note: Start at one end and work your way around to insure proper alignment.)

**15.** Double check your work to be certain that all nuts, bolts, and clamps are securely fastened.

**16.** Reconnect the negative battery cable.

Thank you for purchasing the Airaid Intake System. Your Airaid Intake System was carefully inspected and packaged. Check that no parts are missing, or were damaged during shipping. If any parts are missing, contact Airaid. The air filter element is protected from direct exposure to water and debris; care should be taken not to drive through deep water. WATER INGESTION IS THE DRIVERS RESPONSIBILITY! The air filter is reusable and should be cleaned periodically.

## FILTER IDENTIFICATION

700-451 Airaid Oiled Media  
702-451 Airaid SynthaMax Dry Media - Black

701-451 Airaid SynthaMax Dry Media - Red  
703-451 Airaid SynthaMax Dry Media - Blue

**For your Oiled media filter  
we suggest using the  
AIRAID Filter Tune-Up Kit!**



P/N 790-551 Aerosol Spray  
P/N 790-550 Squeeze Spray



*SynthaMax*<sup>®</sup>

**Do Not Oil**

Synthamax Air Filters do not require oil. Service air filter as needed by cleaning with common non-petroleum all-purpose household cleaner and water. Simple Green<sup>®</sup>, Formula 409<sup>®</sup> or equivalent works great. Apply cleaner to outside of air filter and allow to soak. Then flush filter clean from the inside out with a garden hose and repeat steps if necessary. Do not apply high pressure water or air to clean filter. Allow filter to air dry and reinstall.