



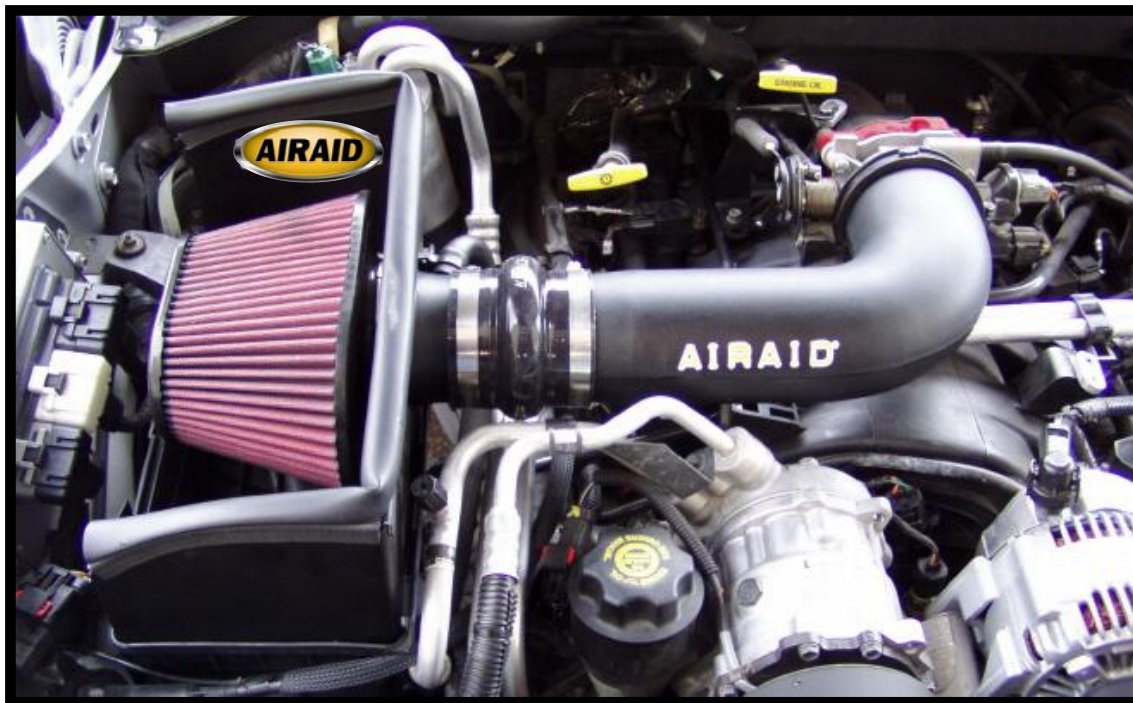
Installation Instructions

For Part Numbers:

- 300-151 720-440 Airaid Oiled Media Filter
- 301-151 721-440 SynthaMax Dry Media Filter - Red
- 302-151 722-440 SynthaMax Dry Media Filter - Black
- 303-151 723-440 SynthaMax Dry Media Filter - Blue

2000-04 Dodge Dakota
2000-03 Dodge Durango
4.7L V8

INTAKE SYSTEMS FOR VEHICLES LISTED ARE 50 STATE LEGAL. SEE CARB STATUS ON EACH PART FOR A SPECIFIC VEHICLE.



Component Identification

- | | | |
|-----|-----------------------|---|
| 1. | Airaid Premium Filter | 1 |
| 2. | Cool Air Dam Assembly | 1 |
| 3. | Modular Intake Tube | 1 |
| 4. | Urethane Hump Hose | 1 |
| 5. | Weather Strip 26 1/4" | 1 |
| 6. | #16 Speed Clamp | 2 |
| 7. | #56 Hose Clamp | 2 |
| 8. | Grommet Plug | 1 |
| 9. | Grommet w/Thru Hole | 1 |
| 10. | 1/2" x 6" rubber hose | 1 |
| 11. | Airaid Decal | 1 |



1. Disconnect negative battery cable and loosen the intake tube clamp.



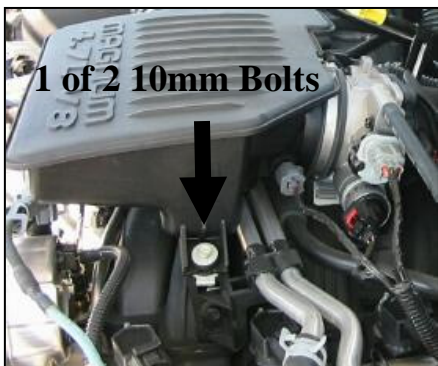
2. Disconnect the crankcase breather tube at the air box lid.



3. Unclip the factory air box lid and remove the lid and factory air filter from vehicle.



4. If your vehicle is equipped with an air temperature sensor, disconnect and remove the sensor & retain for later installation with Airaid kit.



5. Loosen and remove the two 10mm bolts below the silencer box.



6. Loosen the hose clamp on the throttle body & remove the silencer box & accordion style tube from vehicle.



7. Mount the Airaid Cool Air Dam in place of the original air box lid & snap into place.



8. Mount the Airaid Premium filter inside the Cool Air Dam and secure with hose clamp provided. Apply the Airaid Foil Decal onto the Panel as shown.



9. Press the weather seal onto the top of the Airaid Cool Air Dam. (Hint: begin at a corner and work the weather strip towards the ends)



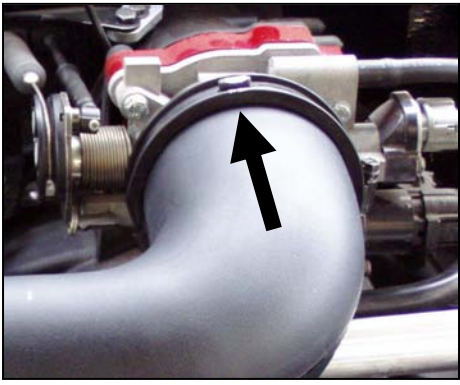
10. Install the urethane hump hose onto larger end of the Airaid Intake tube using the # 56 hose clamp provided.



11. Reinstall factory throttle body coupler onto smaller end of intake tube.



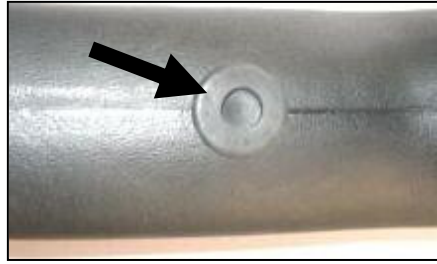
12. Slide the intake tube into the throttle body & align hump hose with Airaid Cool Air Dam. Slide the hump hose over end of the Airaid Cool Air Dam intake and secure using a #56 hose clamp.



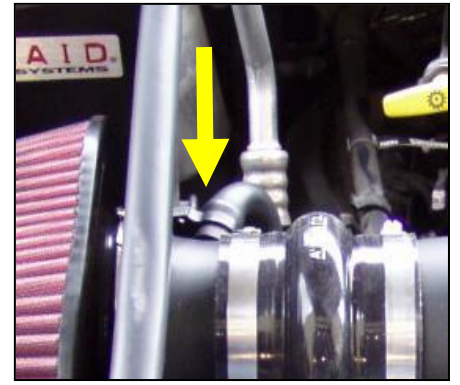
13. Factory coupler must be orientated with the clamp screw at the 12 o'clock position.



14. If your vehicle is equipped with an air temperature sensor, insert the rubber grommet into the hole on the intake tube and mount the air temperature sensor into the grommet.



15. If your vehicle is not equipped with an air temperature sensor, insert the rubber grommet plug into the hole on the intake tube.



16. Reconnect the crankcase breather hose to the tube on the Airaid Cool Air Dam and secure with the black speed clamp provided. (Note for 2004: Replace breather hose with new 1/2" ID hose and speed clamps provided.)

Provision for Some '03 and '04 Models



17. If your vehicle is equipped with a dipstick tube that interferes with the location of the Airaid Intake System, an adjustment to the dipstick tube must be made. Firmly grasp the dipstick tube about 6 inches below the top with your left hand and carefully form the tube towards the engine. This will allow for clearance of the Airaid Intake System.

18. Double check your work to be certain that all nuts, bolts, and clamps are securely fastened.

19. Reconnect the negative battery cable.

Thank you for purchasing the Airaid Intake System. Your Airaid Intake System was carefully inspected and packaged. Check that no parts are missing, or were damaged during shipping. If any parts are missing, contact Airaid. The air filter element is protected from direct exposure to water and debris; care should be taken not to drive through deep water. **WATER INGESTION IS THE DRIVERS RESPONSIBILITY!** The air filter is reusable and should be cleaned periodically.

FILTER IDENTIFICATION

720-440 Airaid Oiled Media
722-440 Airaid SynthaMax Dry Media - Black

721-440 Airaid SynthaMax Dry Media - Red
723-440 Airaid SynthaMax Dry Media - Blue

For your Oiled media filter we suggest using the AIRAID Filter Tune-Up Kit!



Do Not Oil



P/N 790-551 Aerosol Spray
P/N 790-550 Squeeze Spray



Synthamax Air Filters do not require oil. Service air filter as needed by cleaning with common non-petroleum all-purpose household cleaner and water. Simple Green®, Formula 409® or equivalent works great. Apply cleaner to outside of air filter and allow to soak. Then flush filter clean from the inside out with a garden hose and repeat steps if necessary. Do not apply high pressure water or air to clean filter. Allow filter to air dry and reinstall.