



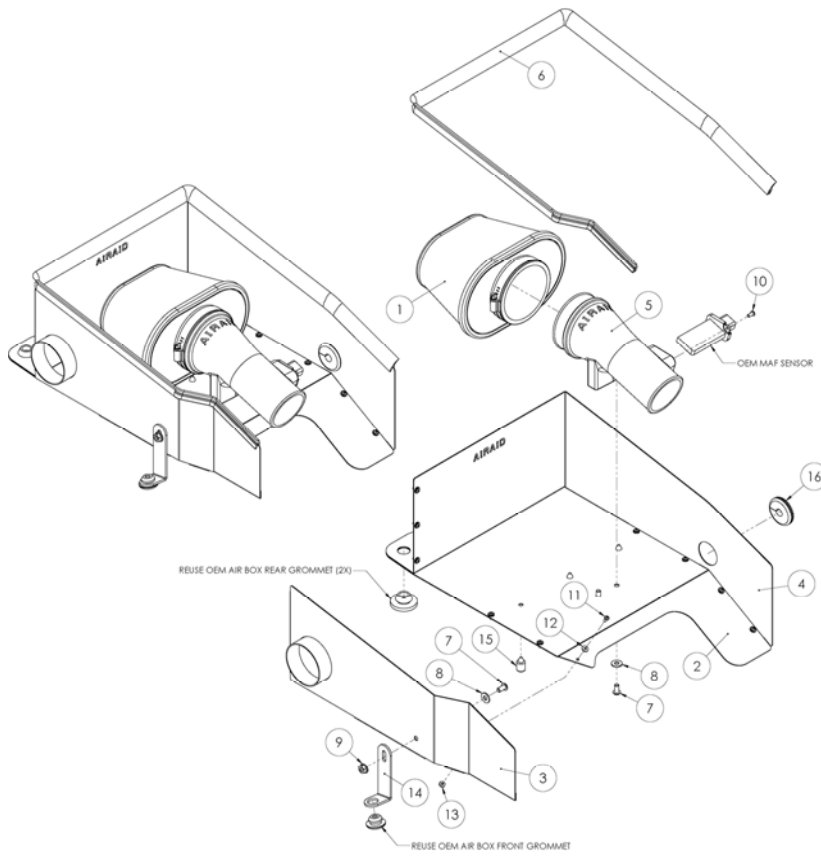
Installation Instructions

For Part Numbers:

200-195	720-440 Airaid Oiled Media Filter
201-195	721-440 SynthaMax Dry Media Filter - Red
202-195	722-440 SynthaMax Dry Media Filter - Black
203-195	723-440 SynthaMax Dry Media Filter - Blue

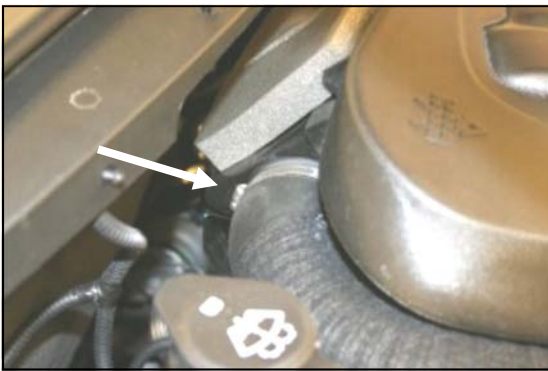
**2006-11 Chevrolet HHR
2.2L & 2.4L I4 Non Turbocharged
Automatic Transmission Only**

INTAKE SYSTEMS FOR VEHICLES LISTED ARE 50 STATE LEGAL. SEE CARB STATUS ON EACH PART FOR A SPECIFIC VEHICLE.



Component Identification

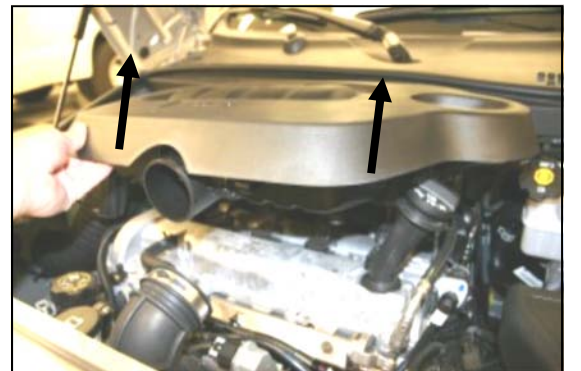
1.	Airaid Premium Filter	1
2.	Bottom Panel	1
3.	Passenger Side Panel	1
4.	Driver Side Panel	1
5.	Airaid Intake Tube	1
6.	Weather Strip 47 1/2"	1
7.	1/4"-20x1/2" Button Head Bolt	3
8.	1/4" Flat Washer	3
9.	1/4" Serrated Nut	1
10.	8-32x3/8" Button Head Screw	2
11.	6-32x 5/16" Screw	13
12.	#6 Flat Washer	13
13.	6-32 Keps Nut	13
14.	Bracket	1
15.	Silicone Bumpers	3
16.	Large Grommet	1
17.	#20 Torx Bit	1
18.	Airaid Decal	1



1. Disconnect the negative battery cable. With a 1/4" socket, loosen the hose clamp that holds the fresh air intake tube to the factory air cleaner housing. Slip the tube off of the factory air cleaner housing and set it aside, it will be re-connected later in the install.



2. Loosen the hose clamp that holds the rubber elbow to the factory air cleaner housing. Next squeeze the tab on the Mass Air Flow sensor wiring connector, and remove the connector from the Mass Air Flow sensor.



3. Remove the factory air filter housing by lifting on the front, and then the rear. There are no bolts holding it down, only 3 rubber grommets.



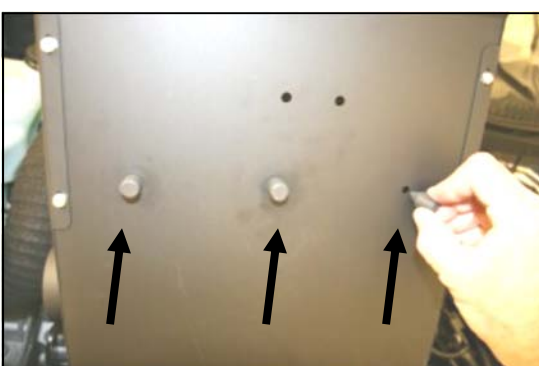
4. Using the supplied #20 torx bit, remove two screws, and the Mass Air Flow sensor from the factory air cleaner housing. Set it aside for re-installation later in the install.



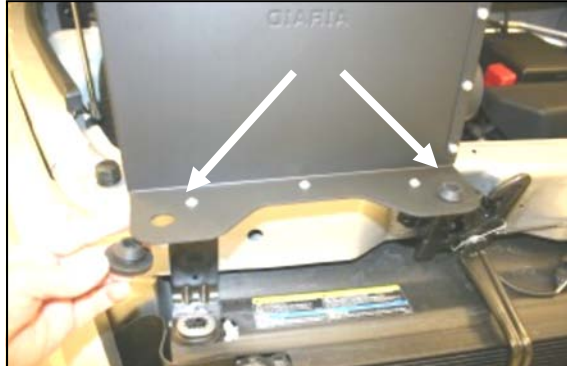
5. Remove 3 factory rubber grommets from the factory air cleaner housing.



6. Assemble the three Cool Air Dam panels (#2, #3, & #4), using 13 screws (#11), washers (#12), and nuts (#13). Apply the Airaid Foil Decal onto



7. Install the three silicone bumpers (#15) into the three holes in the bottom of the Cool Air Dam, as shown.



8. Install the two large factory grommets removed from the factory air cleaner housing in step #5, into the two holes at the back of the Airaid Cool Air Dam.



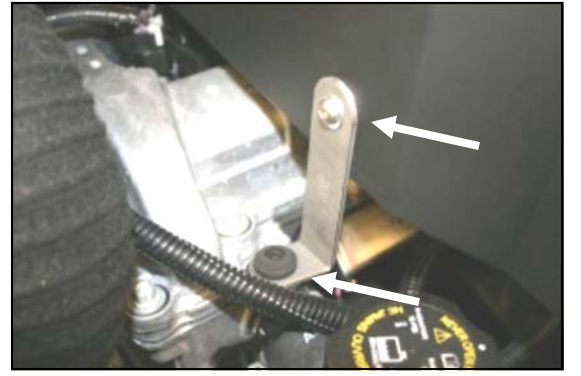
9. Install the Mass Air Flow sensor removed in step #4, into the Airaid Intake Tube (#5) using the two 8/32"x 3/8" button head screws (#10). **DO NOT USE THE FACTORY SCREWS!**



10. Install the Airaid Intake Tube onto the CAD using two 1/4-20 x 1/2" button head bolts (#7) and 1/4" flat washers (#8), threaded up from the bottom of the CAD.



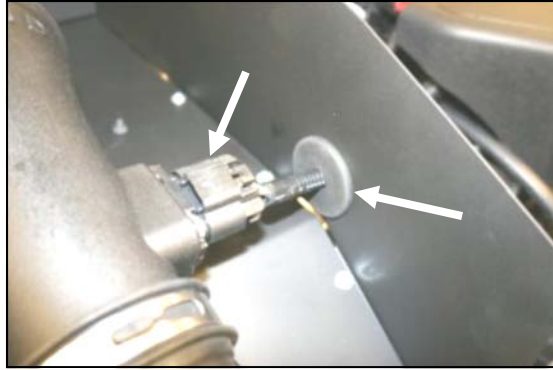
11. Install the assembled CAD into the vehicle by lowering the front into the vehicle first, and then aligning the two grommets on the studs at the rear of the engine. Push down firmly on the rear of the CAD to seat the grommets. Next slide the factory rubber elbow onto the Airaid Intake Tube.



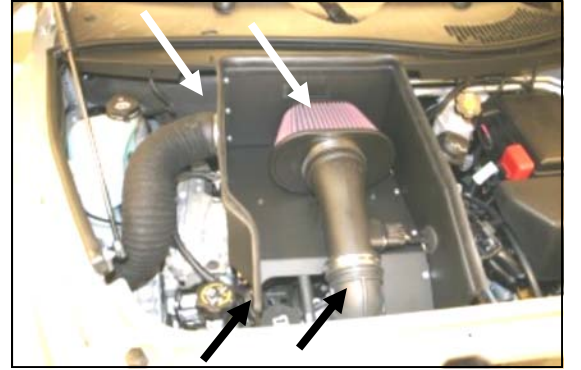
12. Install the small factory grommet removed in step #5 into the supplied bracket (#14). Next slip the installed grommet over the stud on the front of the engine, and bolt the bracket to the CAD using one 1/4-20x 1/2" button head bolt (#7), 1/4" flat washer (#8), and 1/4" serrated nut (#9).



13. Slide the Mass Air Flow sensor connector thru the hole in the side of the CAD, and install the "split" grommet (#16) over the wiring loom as shown.



14. Re-connect the wiring connector to the MAF, and then seat the large grommet into the hole in the side of the CAD.



15. Install the Airaid Premium Filter (#1) onto the Airaid Intake Tube, and tighten the clamp. Install the weather strip (#6) on top of the CAD starting at the front corner, and working your way to the other corner. Reconnect the factory fresh air tube to the CAD, and tighten the hose clamp. Adjust the factory rubber elbow on the Airaid Intake Tube, and tighten the hose clamp.

16. Double check your work!

Make sure there is no foreign material in the intake path. Make sure all clamps, hoses, bolts, and screws are tight.

17. Reconnect the negative battery cable!

WARNING! If your vehicle has a Vehicle Emission Control Information decal affixed to the factory airbox, a new replacement label must be obtained and installed in a readily visible position in the engine compartment in order to remain CARB compliant. Failure to do so will prevent the vehicle from passing a smog check. Replacement labels can be ordered from your local dealership. Regulations state that the VECI label shall not be affixed to any equipment which is easily detached from the vehicle. Label placement, under the hood on a painted surface is recommended.

Thank you for purchasing the Airaid Intake System. Your Airaid Intake System was carefully inspected and packaged. Check that no parts are missing, or were damaged during shipping. If any parts are missing, contact Airaid. The air filter element is protected from direct exposure to water and debris; care should be taken not to drive through deep water. WATER INGESTION IS THE DRIVERS RESPONSIBILITY! The air filter is reusable and should be cleaned periodically.

FILTER IDENTIFICATION

720-440 Airaid Oiled Media
722-440 Airaid SynthaMax Dry Media - Black

721-440 Airaid SynthaMax Dry Media - Red
723-440 Airaid SynthaMax Dry Media - Blue

For your Oiled media filter we suggest using the AIRAID Filter Tune-Up Kit!



Do Not Oil



P/N 790-551 Aerosol Spray
P/N 790-550 Squeeze Spray



Synthamax Air Filters do not require oil. Service air filter as needed by cleaning with common non-petroleum all-purpose household cleaner and water. Simple Green®, Formula 409® or equivalent works great. Apply cleaner to outside of air filter and allow to soak. Then flush filter clean from the inside out with a garden hose and repeat steps if necessary. Do not apply high pressure water or air to clean filter. Allow filter to air dry and reinstall.