



Installation Instructions

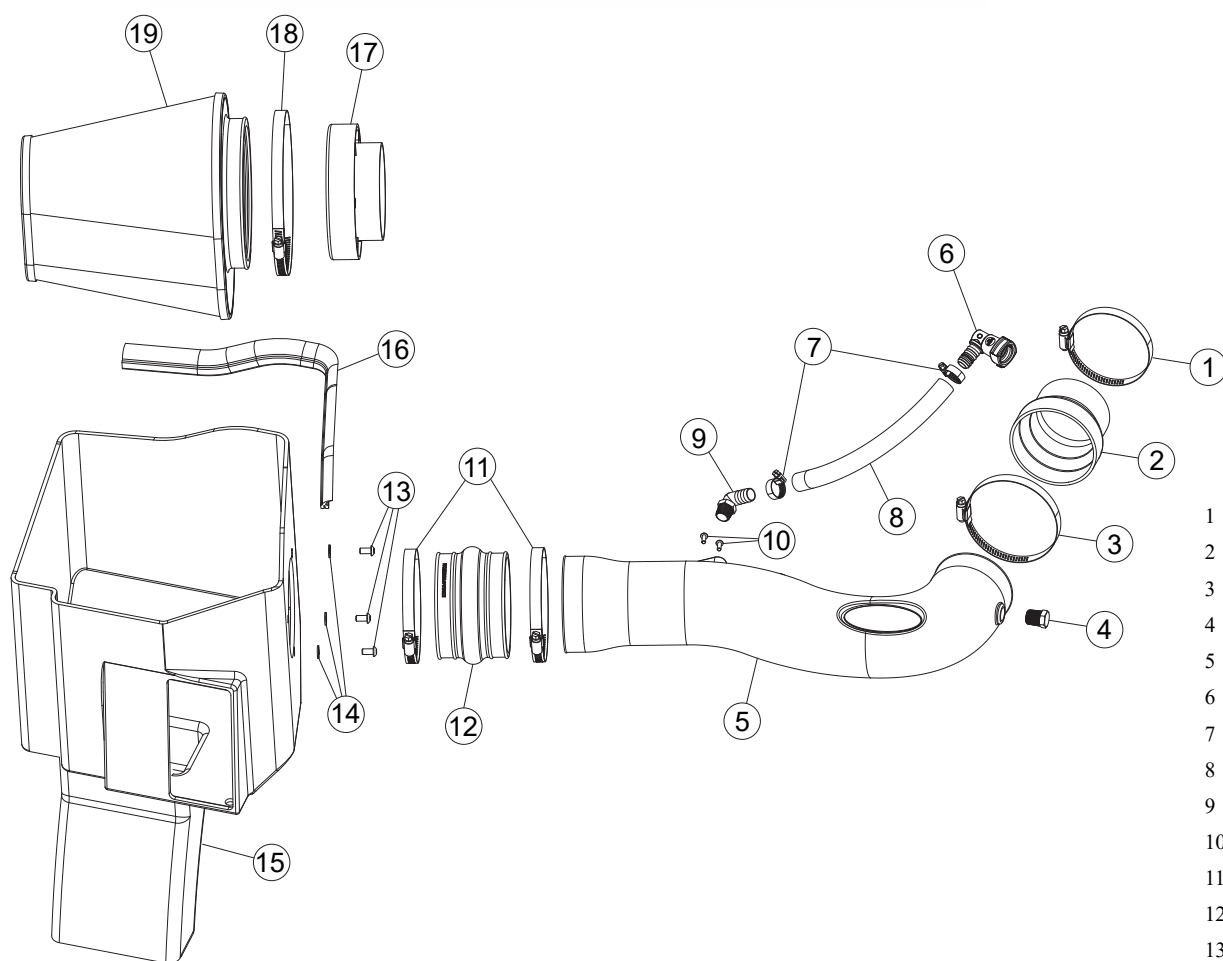
For Part Numbers:

200-347 720-472 Airaid Oiled Media Filter

201-347 721-472 SynthaMax Dry Media Filter - Red

2014-17 Chevrolet Silverado 1500 / GMC Sierra 4.3L-V6

NOT LEGAL FOR SALE OR USE ON ANY POLLUTION CONTROLLED MOTOR VEHICLE IN CALIFORNIA OR STATES ADOPTING CALIFORNIA EMISSION PROCEDURES.



Component Identification

| | | | |
|----|-----------------|--------------------------------------|---|
| 1 | 08620 | HOSE CLAMP; #56 | 1 |
| 2 | KITRDCR25 | REDUCER; 3.75"ID X 3.1"ID | 1 |
| 3 | 08624 | HOSE CLAMP; #60 | 1 |
| 4 | 08350 | PLUG; 3/8 NPT, PLASTIC, BLACK | 1 |
| 5 | KIT285 | INTAKE TUBE | 1 |
| 6 | KITFITTING33 | ELBOX; 16-14 MM QC PCV 90° | 1 |
| 7 | 08411 | HOSE CLAMP; #10 MINI | 2 |
| 8 | KITHOSE16 | HOSE; HEATER 5/8" 1.00 FT | 1 |
| 9 | KITFITTING29 | ELBOW; 3/8"NPT X 5/8" | 1 |
| 10 | KIT15BHC3050 | SCREW; BUTTON 8-32 X 1/2" 18.8SS | 2 |
| 11 | KITHS72 | CLAMP; #72 SS 9/16" | 2 |
| 12 | KITHUMPHS05EPDM | HUMP HOSE 4.25"ID X 3"L | 1 |
| 13 | KIT15DHC3050 | SCREW; BUTTON 1/4"-20 X 1/2" 18.8 SS | 3 |
| 14 | KIT09FWZ019 | WASHER; FLAT ZINC 3/16 #10 | 3 |
| 15 | KIT267CAB | AIR BOX | 1 |
| 16 | KITSTRIP21 | EDGE TRIM (2.1250') | 1 |
| 17 | KIT1121MAFADA | ADAPTER; MAF PLASTIC 112-1 | 1 |
| 18 | KITHS104 | CLAMP; #104 SS 9/16" | 1 |
| 19 | 720-472F | FILTER; 6"FLG,10-3/4"X7-3/4"B,7-1/4" | 1 |



1. **Disconnect the negative battery cable!** A. Depress the grey locking tab in the PCV breather connector quick disconnect fitting on the valve cover and disconnect the PVC from the valve cover. B. Loosen the hose clamps that secure the intake plenum assembly to the throttle body and air filter housing and then remove the complete assembly from the vehicle.



2. Remove the bolt shown which secures the fender brace to the fender and loosen the bolt which secures the brace to the core support. **NOTE: The fender bolt will be reused. The core support bolt is hidden under the decorative cover.** Rotate the brace clockwise to allow room for the air filter housing to be removed. Release the red locking tab and then disconnect the mass air sensor electrical connection. Dislodge the air filter housing from the mounting grommets and remove the housing from the vehicle. **NOTE: AIRAID recommends that customers do not discard factory air intake.**



3. Remove the four bolts shown securing the air filter housing tray to the inner fender and then remove the tray from the vehicle. **NOTE: Three of these bolts will be reused in a later step.**



4. Install the filter adapter into the AIRAID® air box and secure with the provided hardware.

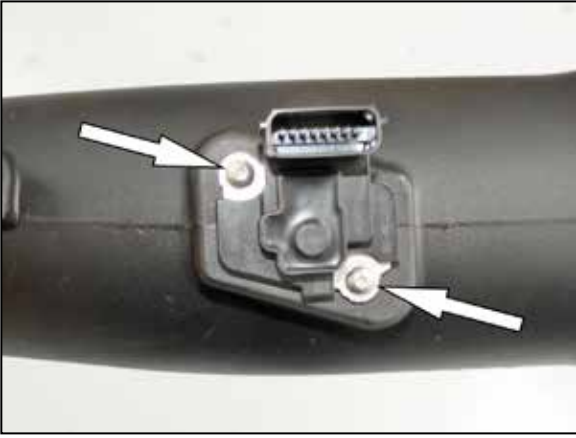


5. Install the AIRAID air box into the vehicle and secure with three of the OEM bolts from step #3. Apply one of the provided AIRAID® decals to the air box as shown.



6. Install the 3/8" NPT elbow fitting and 3/8" NPT plug into the AIRAID® intake tube where shown. Apply the provided AIRAID® decal onto the intake tube where shown. **NOTE: Plastic NPT fittings are easy to cross thread. Install the vent fitting "hand" tight, then turn it two complete turns with a wrench.**

Continued...



7. Remove the OEM mass air sensor from the factory air filter housing and install it into the AIRAID® intake tube and secure with the provided hardware.



8. Install the hump coupler onto the filter adapter with the #70 hose clamps and the step coupler onto the throttle body with the #52 and #60 hose clamps. Do not tighten the hose clamps at this time.



9. Install the AIRAID® intake tube into the hump coupler and then into the step coupler, adjust the tube and couplers for best fit and then secure all the hose clamps.



10. Install the provided 90° quick disconnect fitting onto the valve cover PCV port.



11. Install the provided PCV hose onto the fitting on the valve cover and in the intake tube with the provided hose clamps. Secure the PCV hose with the hose clamps.



12. Reconnect the mass air sensor and secure the red locking tab.



13. Install the AIRAID® air filter onto the filter adapter and secure with the provided hose clamp.



14. Install the weather strip onto the top edge of the AIRAID® air box with the contour rolling away from the filter as shown.



15. Rotate the fender brace back into position and reinstall the factory bolt and tighten the core support bolt.



16. Double check your work!

Make sure there is no foreign material in the intake path. Make sure all clamps, hoses, bolts, and screws are tight. Double check the hood clearance!

Reconnect the negative battery cable!

17. **NOTE:** Most General Motors vehicles have the Vehicle Emissions Certification Information (VECI) label affixed to the air filter box. In order to be compliant with California emissions laws, the label **MUST** remain in the engine compartment. If the Vehicle Emission Control Information label is removed during modification, a new replacement label must be obtained and installed in a readily visible position in the engine compartment. The label shall not be affixed to any equipment which is easily detached from the vehicle. We recommend that the label is affixed to the underside of the hood adjacent to the hood latch. The label is Vehicle Identification Number dependent and can be ordered from the vehicle dealership. In order to receive the proper decal please bring your VIN with you. Failure to have the VECI under the hood may result in failure of a pre-registration smog test.

FILTER IDENTIFICATION

720-472 Airaid Oiled Media

721-472 Airaid SynthaMax Dry Media - Red

For your Oiled media filter we offer the Airaid Tune Up Kit!



P/N 790-551 Aerosol Spray
P/N 790-550 Squeeze Spray



NOT LEGAL FOR SALE OR USE ON ANY POLLUTION CONTROLLED MOTOR VEHICLE IN CALIFORNIA OR STATES ADOPTING CALIFORNIA EMISSION PROCEDURES.

SynthaMax

Do Not Oil

Synthamax Air Filters **do not** require oil. Service air filter as needed by cleaning with common non-petroleum all-purpose household cleaner and water. Simple Green®, Formula 409® or equivalent works great. Apply cleaner to outside of air filter and allow to soak. Then flush filter clean from the inside out with a garden hose and repeat steps if necessary. Do not apply high pressure water or air to clean filter. Allow filter to air dry and reinstall.