

AirCELL

by AIR LIFT®

Kit 52211

Dodge 2500,
2500HD, 3500
Pickup

Front application

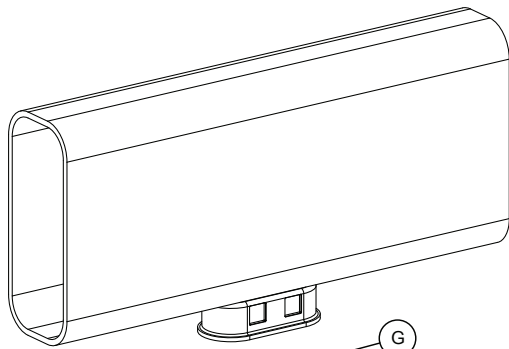


INSTALLATION GUIDE

For maximum effectiveness and safety, please read these instructions completely before proceeding with installation.

Failure to read these instructions can result in an incorrect installation.

Installation Diagram



NOTE: Apply grease around side edge of spacer/retainer

NOTE: To increase the loaded vehicle height, add the optional cup spacer.

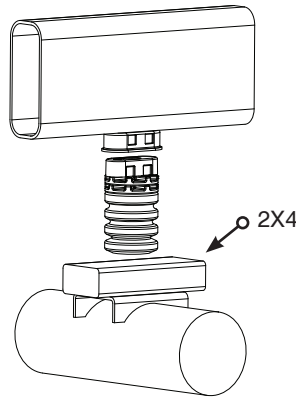
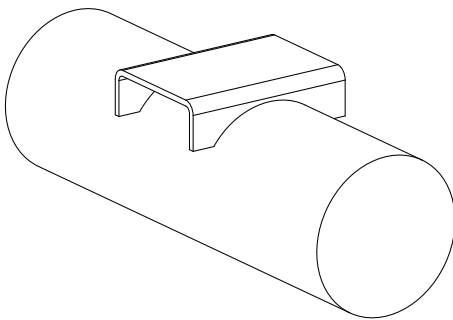
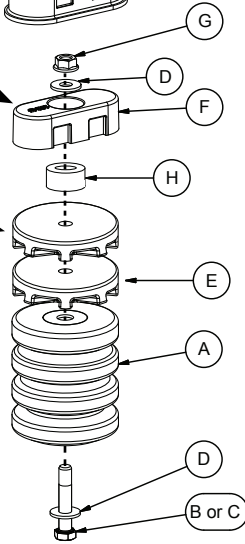
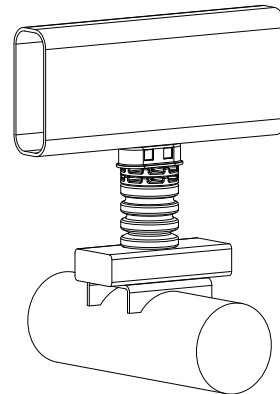


fig. 1



Important Safety Notice

The installation of this kit does not alter the Gross Vehicle Weight Rating (GVWR) or payload of the vehicle. Check your vehicle's owner's manual and do not exceed the maximum load listed for your vehicle.

Gross Vehicle Weight Rating: The maximum allowable weight of the fully loaded vehicle (including passengers and cargo). This number — along with other weight limits, as well as tire, rim size and inflation pressure data — is shown on the vehicle's Safety Compliance Certification Label.

Payload: The combined, maximum allowable weight of cargo and passengers that the truck is designed to carry. Payload is GVWR minus the Base Curb Weight.

HARDWARE LIST

Item	Part #	Description.....	Qty
A	52040	Spring.....	2
B	17420	3/8"-16 x 2.25 Bolt.....	2
C	17327	3/8"-16 x 1.75 Bolt.....	2
D	18206	5/16" Flat Washer	4
E	13244	Cup Spacer	4
F	13245	Spacer/Retainer	2
G	18422	3/8" Flange Nut	2
H	13245-002	Bushing	2

TOOLS LIST

Description.....	Qty
Hoist or floor jacks.....	1
Safety stands.....	2
Metric and standard sockets.....	1
Metric and standard wrenches	1
Ratchet	1

Installing the AirCell System

ASSEMBLING AND ATTACHING THE SYSTEM

1. Jack up the front of the vehicle or raise on a hoist. Support the frame with safety stands. Lower the axle of the vehicle until the suspension is fully extended.
2. Pry out the existing jounce bumpers from their mounts on both sides of the vehicle.
3. Assemble the spring (A) to the spacer (F) using the supplied 3/8" bolt (C), two flat washers (D), cup spacer (E) and flange nut (G) (fig. 1). Torque assembly to 31 ft/lbs.

NOTE

Make sure the bushing (H) is in the spacer before assembling.

4. Using the mount where the stock jounce bumper was removed and with the assistance of a block of wood or equivalent between the axle and the spring assembly, attach the spring/spacer assembly to the vehicle. Raise the axle until the assembly is fully seated in the stock mount. Repeat steps 3 and 4 for the other side of the vehicle.

NOTE

Applying grease around the side edge of the spacer/retainer will help in aiding the spacer/retainer to "snap" into the stock jounce bumper cup.

OPTIONAL

You can adjust the loaded height of the vehicle by adding the optional cup spacer (E) between the spring (A) and the spacer (F). It will be necessary to use the longer hardware provided (B) to install the cup spacer.