



# **Air Lift Performance 3H™/3P™ Kit 27703**

Second Compressor  
Harness



## **INSTALLATION GUIDE**

For maximum effectiveness and safety, please read these instructions completely before proceeding with installation.

*Failure to read these instructions can result in an incorrect installation.*

# Introduction

The purpose of this publication is to assist with the installation, maintenance and troubleshooting of the Air Lift Performance 3H/3P second compressor kit.

Read and understand the entire installation guide before beginning installation or performing any maintenance, service or repair. The information includes step-by-step installation information, installation templates and a troubleshooting guide.

Air Lift Company reserves the right to make changes and improvements to its products and publications at any time.

## NOTATION EXPLANATION

Hazard notations appear in various locations in this publication. Information which is highlighted by one of these notations must be observed to help minimize risk of personal injury or possible improper installation which may render the vehicle unsafe. Notes are used to help emphasize areas of procedural importance and provide helpful suggestions. The following definitions explain the use of these notations as they appear throughout this guide.



**DANGER**

INDICATES IMMEDIATE HAZARDS WHICH WILL RESULT IN SEVERE PERSONAL INJURY OR DEATH.



**WARNING**

INDICATES HAZARDS OR UNSAFE PRACTICES WHICH COULD RESULT IN SEVERE PERSONAL INJURY OR DEATH.



**CAUTION**

INDICATES HAZARDS OR UNSAFE PRACTICES WHICH COULD RESULT IN DAMAGE TO THE MACHINE OR MINOR PERSONAL INJURY.

---

## NOTE

*Indicates a procedure, practice or hint which is important to highlight.*

---

# Install Harness

**CAUTION**

DISCONNECT THE BATTERY GROUND WHILE INSTALLING THE SECOND COMPRESSOR HARNESS.

## COMPRESSOR CONNECTIONS

1. Mount the compressor relay using supplied self-tapping screw.
2. Cut off the spade and eyelet from the second compressor power (red) and ground (black) wires.
3. Attach the compressor (red) wire to the harness compressor power (red/white) wire using the supplied heat-shrinkable butt splice.
4. Attach the compressor (black) wire to the harness compressor ground (black) wire using the supplied heat-shrinkable butt splice.

**NOTE**

*Use an appropriate terminal crimp tool to ensure a good connection.*

5. Carefully apply heat (preferably with a heat gun) to the ends of the butt connector to seal these connections.

## BATTERY CONNECTIONS

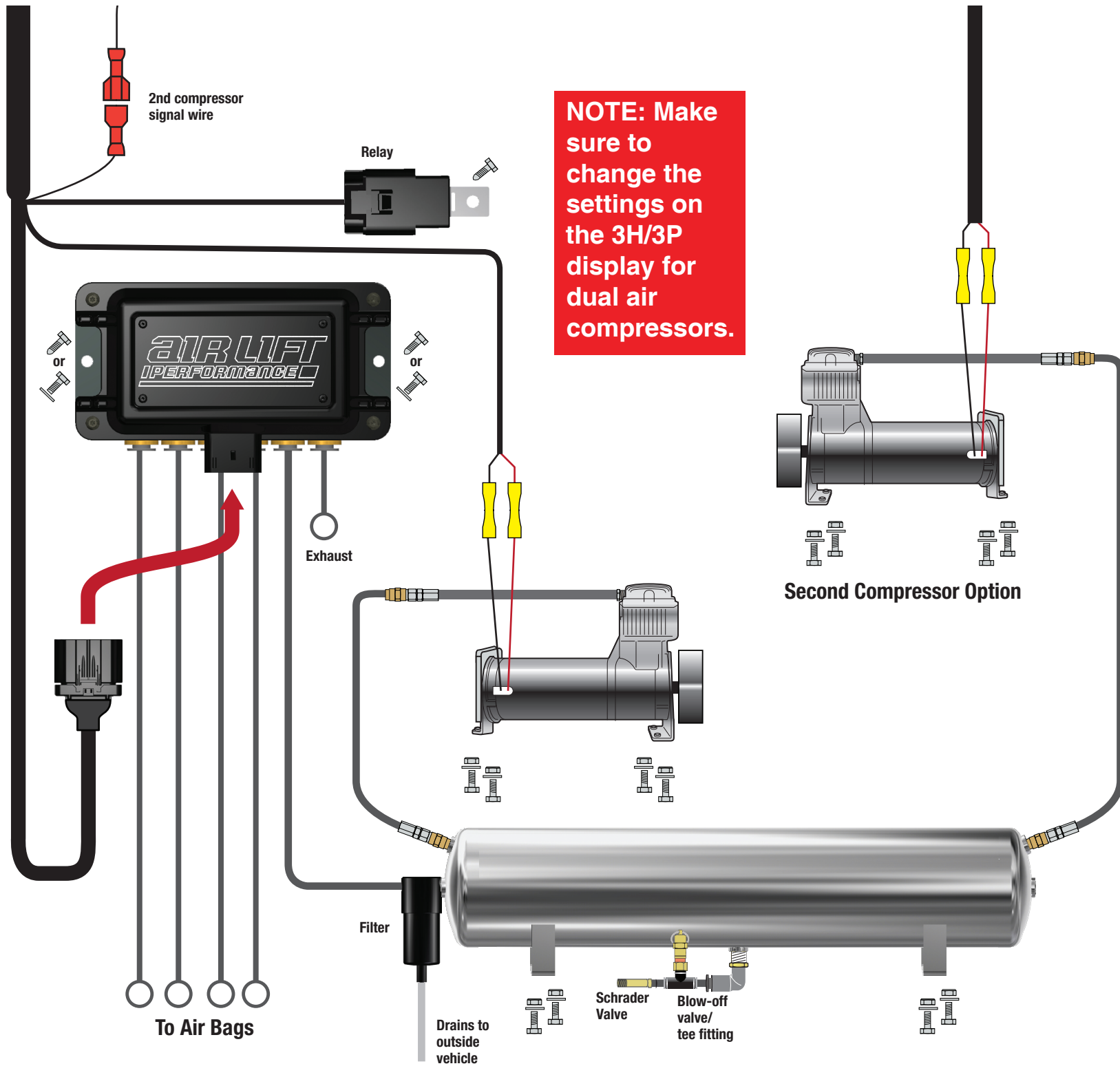
1. Route battery power (red) and ground (black) wires of the second compressor harness free from abrasive edges and heat source to the battery.
2. Attach the battery power (red) wire to the red wire on one end of the fuse holder using the supplied heat-shrinkable butt splice.
3. Carefully apply heat (preferably with a heat gun) to the ends of the butt connector to seal this connection.
4. Attach a ring terminal to the other end of the fuse holder and fasten to the positive battery (+) terminal or stud.
5. Attach a ring terminal to the ground (black) wire and fasten to the negative battery (-) terminal or stud.
6. Install the supplied 30A fuse into the fuse holder and close lid.

## INTEGRATION INTO EXISTING HARNESS

1. Locate the grey wire labeled “compressor signal” on the second compressor harness (the main Air Lift Performance 3H/3P harness has the mating spade connection on a grey/white wire located near the primary relay connector).
2. Attach the two spade connections to complete integration of the second compressor harness.

## DISPLAY SETTINGS

1. Once the second compressor is installed, go into the main menu screen on the ALP3 display, go to compressor/tank and then select dual/single and set the compressor setting to dual.



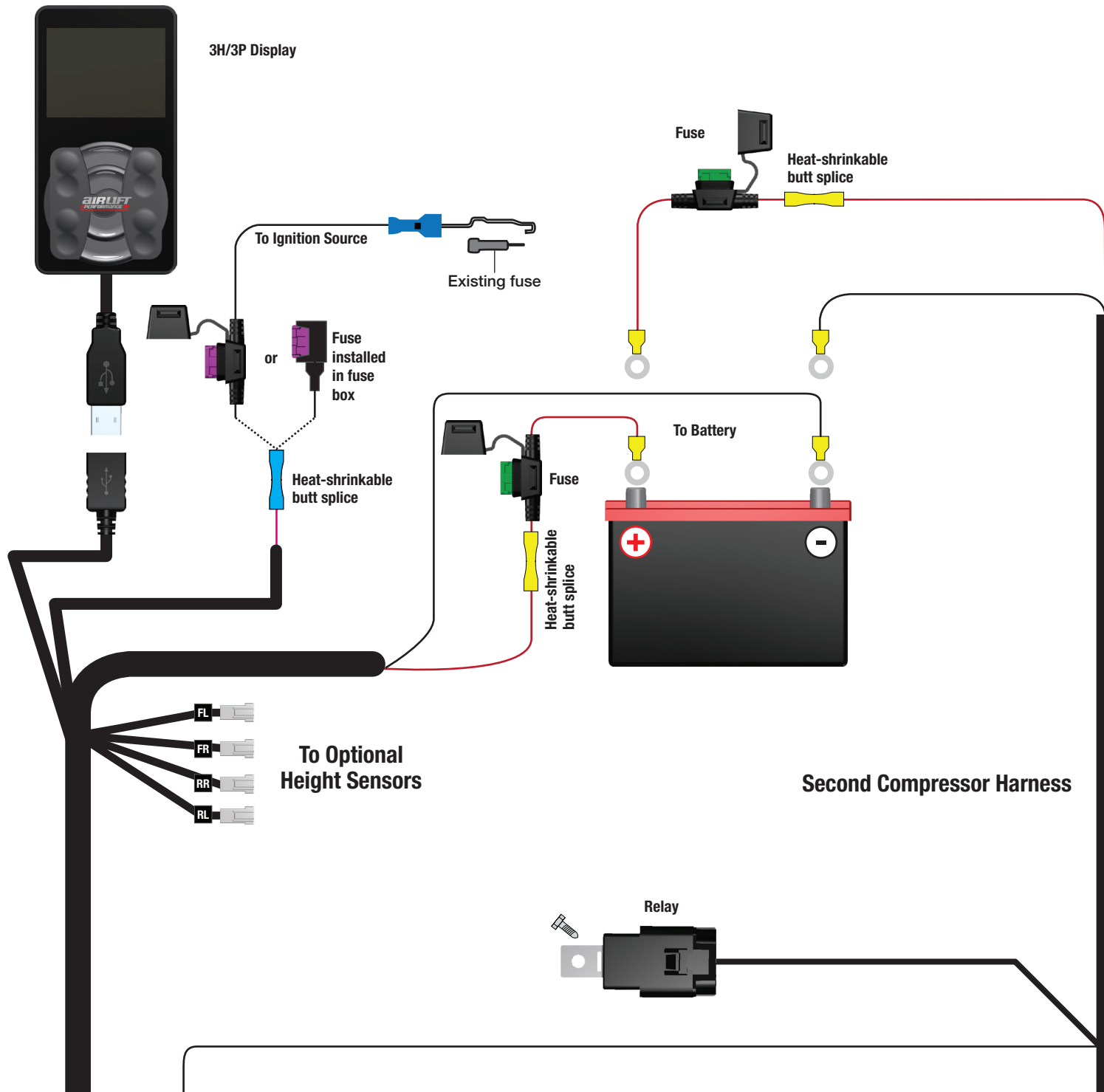


fig. 1