



***Agri+Fab<sup>®</sup>***  
***Lawn Care Made Easy<sup>®</sup>***

**CATALOG**



**Agri-Fab**® *Lawn Care Made Easy*®





Agri-Fab® lawn care products are designed for homeowners who want a beautiful lawn and want the job of lawn care to be easy. In order to achieve this objective, Agri-Fab® constantly asks you, our customers, how we can improve our current lawn care products.

Above all of this, is our dedication to building quality and durability into the products we make. We can assure you that our products are made with the very best components to ensure lasting performance. As proof of this commitment, all of our lawn care products come with a three-year limited warranty.

You can be sure when purchasing Agri-Fab® lawn care products it will help you make Lawn Care Easy.

Mike Cohan  
President





# CONTENTS



**CARTS . . . . . 6**  
For all kinds of uses a cart will take the load off your back.



**GROOMERS . . . . . 14**  
Use grooming tools for a polished healthy lawn.



**GROUND ENGAGING . . 24**  
Tools designed to go beyond the lawn. Make those large landscaping ideas easier.



**ROLLERS . . . . . 28**  
Smooth out your lawn from the harsh winter weather.

**SPRAYERS . . . . . 34**  
Easily cover large areas, trouble spots, trees and gardens.



**SPREADERS . . . . . 38**  
Keep your yard healthy by feeding and weeding. Also useful with salt in the winter.



**SWEEPERS . . . . . 52**  
Use a lawn sweeper, a better way to rake.



**VACS . . . . . 58**  
Make a large job quick and easy.







**Why Use A Cart?**

It's the best way to save your back. There's no need to carry a big load by yourself. It's also not necessary to go back and forth to get your bags of fertilizer, mulch or any load from one place to another. A cart can do that for you – most of the time in one trip!

By choosing an Agri-Fab® cart you can be sure it's the best you can buy. All Agri-Fab® carts are made to last and made to efficiently and easily carry the load.









# CARTS

**Agri-Fab** Lawn Care Made Easy



**MADE IN USA**  
WITH GLOBAL COMPONENTS



# 1,000 lb. Poly Cart (ATV/UTV)

MODEL 45-0529



- Unique design allows for increased ground clearance to go anywhere.
- Grease zerks for easy maintenance and long product life.



*Foot lever for unloading in one easy step.*



*Swivels up to 100° to allow for easy dumping.*

# 800 lb. Poly Cart

MODEL 45-0519



- Pneumatic tires let you go where you want.
- Grease zerks for easy maintenance and long product life.



*Foot lever for unloading in one easy step.*



*Easily and quickly attaches to all tractors.*



## 650 lb. Poly Cart

MODEL 45-0533

NEW FOR  
  
 2019



- Pneumatic tires let you go where you want.
- Grease zerks for easy maintenance and long product life.



*Foot lever for unloading in one easy step.*



*Easily and quickly attaches to all tractors.*

## 350 lb. Convertible Poly Cart

MODEL 45-0345



- Pneumatic tires let you go where you want.
- Release lever for easy unload.



*Versatile push/tow design.*



*Steel tube handle for easily moving items.*



# 200 lb. Carry-All Cart

MODEL 45-0528



- Durable rustproof poly hopper.
- Steel tube handle for easily moving items.



*Maneuverable 20" rubber wheels for smooth transport.*



*Ideal for any job around the house or property.*





## 1,200 lb. Steel Cart

MODEL 45-0240



- Pneumatic tires let you go where you want.
- Grease zerks for easy maintenance and long product life.



*Foot lever for unloading in one easy step.*



*Easily and quickly attaches to all tractors.*

## 750 lb. Steel Cart

MODEL 45-0101-999



- Pneumatic tires let you go where you want.
- Grease zerks for easy maintenance and long product life.



*Foot lever for unloading in one easy step.*



*Easily and quickly attaches to all tractors.*



# 350 lb. Steel Cart

MODEL 45-0303



- Pneumatic tires let you go where you want.
- Release lever for easy unload.



*Removable tailgate for easy unloading.*



*Easily and quickly attaches to all tractors.*







***Why Aerate and De-thatch?***

When you aerate your lawn, you are opening up the soil surface to let grass roots get the air and moisture it needs for healthy growth.

Your mower creates a layer of dead grass between the soil and leaves of the grass plant. Too much dead grass weakens the grass roots. The Agri-Fab® de-thatcher effectively loosens and lifts thatch for healthy lawn growth.







Agri-Fab



## SmartLINK™ Master Platform

MODEL 45-0473 PATENT 7,604,066



- Durable steel deck and universal hitch.
- Easily attach all SmartLINK™ accessories.



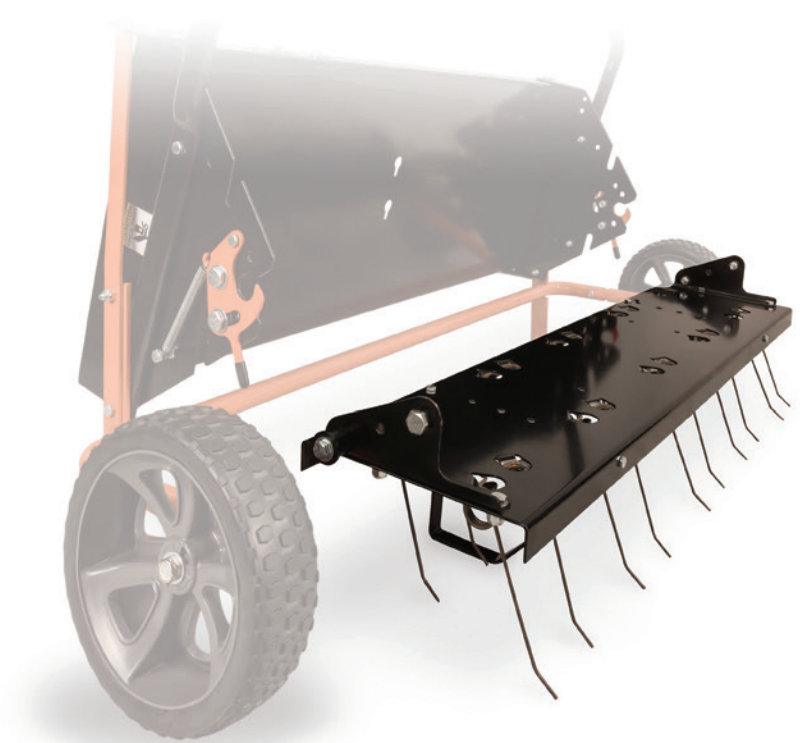
*Easy, stand up storage capability.*



*Flat free tire for hassle-free maintenance.*

## SmartLINK™ Tine De-thatcher

MODEL 45-0457 PATENT 7,604,066 & 7,073,317



- Scratch resistant powder coat paint.
- Easily attaches to SmartLINK™ master platform without tools.



*Great space saver. Stores easily.*



*20 heat-treated spring tines remove thatch quickly.*

# SmartLINK™ Plug Aerator

MODEL 45-0474 PATENT 7,604,066



- Scratch resistant powder coat paint.
- Easily attaches to SmartLINK™ master platform without tools.



*Great space saver. Stores easily.*



*24 galvanized knives penetrate the soil easily.*

# SmartLINK™ Spike Aerator

MODEL 45-0458 PATENT 7,604,066



- Excellent for use in lightly compacted soil.
- Easily attaches to SmartLINK™ master platform without tools.



*Great space saver. Stores easily.*



*10 durable spike discs penetrate the soil easily.*



## 48" Plug Aerator

MODEL 45-0299



- Add up to 140 lbs. for increased soil penetration.
- Pulls plugs up to 3 inches deep for thicker and healthier lawn.



32 galvanized knives penetrate the soil easily.



Flat free tire for hassle-free maintenance.

Specifications subject to change without notice or obligation.

## 40" Plug Aerator

MODEL 45-0518



- Add up to 140 lbs. for increased soil penetration.
- Pulls plugs up to 3 inches deep for thicker and healthier lawn.



24 galvanized knives penetrate the soil easily.



Flat free tire for hassle-free maintenance.





Agri-Fab



### 48" Tine De-thatcher

MODEL 45-0295



- Add up to 70 lbs. for increased thatch removal.
- Easily and quickly attaches to all tractors.



*Raise and lower from tractor seat.*



*24 heat-treated spring tines remove thatch quickly.*

### 40" Tine De-thatcher

MODEL 45-0294



- Add up to 70 lbs. for increased thatch removal.
- Easily and quickly attaches to all tractors.



*Raise and lower from tractor seat.*



*20 heat-treated spring tines remove thatch quickly.*



# Universal Front Mount De-thatcher

MODEL 45-0343



- Easily attaches to most popular lawn sweeper brands.
- Scratch resistant powder coat paint.



*14 heat-treated spring tines remove thatch quickly.*



*Scar-free wheel rolls easily.*





## 40" Spike Aerator

MODEL 45-0544

NEW FOR  
2019



- Add up to 100 lbs. for increased soil penetration.
- Scratch resistant powder coat paint.



*10 galvanized spike discs penetrate the soil easily.*



*Great space saver. Stores easily.*

## Push Spike Aerator

MODEL 45-0365 PATENT D510,687



- Weight tray holds extra weight for increased soil penetration.
- Scratch resistant powder coat paint.



*Easy to maneuver handle.*



*5 durable spike discs penetrate the soil easily.*



# THE IMPORTANCE OF DE-THATCHING AND AERATING

## THATCH

Thatch is a layer of dead organic matter that exists between the soil and the leaves of the grass plant.

### THE GOOD NEWS...

A little thatch is natural in any lawn. And the right amount can actually help the grass and the soil, by protecting roots from heat and sun damage while creating an environment for beneficial soil and surface organisms.

### AND THE BAD NEWS...

Too much thatch can mean problems. A thick layer of thatch blocks the movement of air and nutrients to the soil. Grass roots often migrate from the soil up into the thatch, where they become weak and fall victim to extreme heat or cold, as well as disease and pests. (And when roots die off, they add even more thatch to the layer!) Too much thatch can exaggerate moisture problems as well, holding too much moisture during a wet season and repelling water during a dry season.

### WHAT CAUSES THATCH?

Very often, too much thatch can be traced back to well-intentioned actions on the part of the homeowner. Watering, fertilizing, weed and pest control are all important in moderation, but can result in the development of excess thatch.

### Here's why:

**Over fertilizing:** Too much growth leads to weak roots and excess lawn debris. In addition, too much nitrogen can be harmful to the organisms that naturally control thatch buildup.

**Over watering:** Too much constant moisture creates a low-oxygen environment that is harmful to soil organisms.

**Shallow, frequent watering:** This practice can cause roots to move up into the thatch to reach the water source. (It's best to water infrequently and deeply, only when your lawn really needs it.)

**Herbicides and Pesticides:** While controlling harmful pests and weeds, using too much of these chemicals can harm the overall ecosystem in your lawn, killing off earthworms and soil microbes.



## HOW CAN I CONTROL THATCH?

- **First, correct any practices listed on the left that may be adding to the problem.**

- **De-thatch Your Lawn –**

The best times to de-thatch are late summer and early fall. It's easiest to de-thatch when the ground and grass are slightly moist. Before you de-thatch, mow your lawn at a slightly lower height. It's best to make at least two passes over your lawn, and even better if you use a different pattern each time. After de-thatching, sweep or rake up the debris. Now is a good time to fertilize lightly, and water the lawn.

- **Aerate –**

While de-thatching removes thatch, aeration helps break down the thatch layer. Aeration is less traumatic for your lawn, and is best for controlling thatch before it gets too out of hand. (See below to learn the difference between plug and spike aerators.)

- **Adjust Soil pH –**

If your soil chemistry is off, your grass will be weak and more likely to create (and suffer from) excess thatch. It's easy to test soil chemistry with a do-it-yourself kit from your garden center. If your soil is too acidic, add lime; too alkaline, add sulfur. Use a drop spreader for either additive, and apply according to label directions.

## AERATING

When you aerate your lawn, you are essentially punching holes in the soil surface. This helps loosen compacted soil and helps more air, water and nutrients reach the roots. The best time to aerate is in the spring at the start of the growing season. Late summer or fall aeration can also be beneficial.



### Plug vs. Spike Aerators

A plug aerator actually pulls out small plugs of grass and soil. A spike or blade aerator cuts deep grooves in the soil. Both types are beneficial, but there are differences. Plug aerators are more disruptive and messier, but are more thorough for a lawn that needs attention. Spike aerators are less invasive, and the process lets the grass recover more quickly. These machines are best for regular maintenance.







## About Ground Engaging

Agri-Fab® produces a variety of durable ground engaging products that allow you to groom your property effectively.

Tillers and cultivators are great for preparing the soil for your garden and keeping it weed free throughout the season.

Our rock rake and scraper box can be used on dirt or gravel to help keep the rest of your property looking great!









## Multi-Fit Tow Behind Tiller

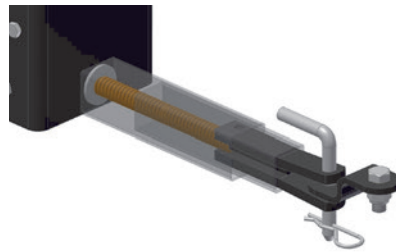
MODEL 45-0308



- Six, double edge heavy duty tines make tilling easy.
- Briggs & Stratton<sup>®</sup> engine for dependable performance.



Depth stake for consistent tilling depth.



ISO shock absorbing hitch for smooth tilling action.

Specifications subject to change without notice or obligation.

## Sleeve Hitch Scraper Box

MODEL 45-0265



*Note: requires sleeve hitch for operation;  
consult tractor manufacturer for sleeve hitch.*

- Blade can pivot and rotate up to 180°.
- Scarifier bar can pivot 180° when not in use.



3/16" steel blade for hardworking,  
hard-wearing strength.



42" working width for time saving  
scraping coverage.



# Sleeve Hitch Disc Cultivator

MODEL 45-0266



*Note: requires sleeve hitch for operation;  
consult tractor manufacturer for sleeve hitch.*

- Up to 100 lbs. of weight can be added to increase penetration.
- Two cultivators can be hooked together for tandem cultivation.



8 durable, 11" steel discs.



Adjustable working width for 30" to 38"

# Sleeve Hitch Rock Rake

MODEL 45-0366



*Note: requires sleeve hitch for operation;  
consult tractor manufacturer for sleeve hitch.*

- Can rotate 180° for reverse rake action.
- Can be angled 24° to the left or right.



1/4" heat-treated steel tangs spaced for thorough coverage.



48" working width for coverage of large areas.





**About Rollers**

If you're looking for that perfect lawn, an Agri-Fab® lawn roller could be your answer. It's one of the best and easiest ways to make your lawn look great. After a long winter a roller levels out your lawn, removing all the bumps and depressions that have naturally occurred. A roller is also good for new sod and freshly seeded lawns because it flattens the soil to promote stronger root growth.





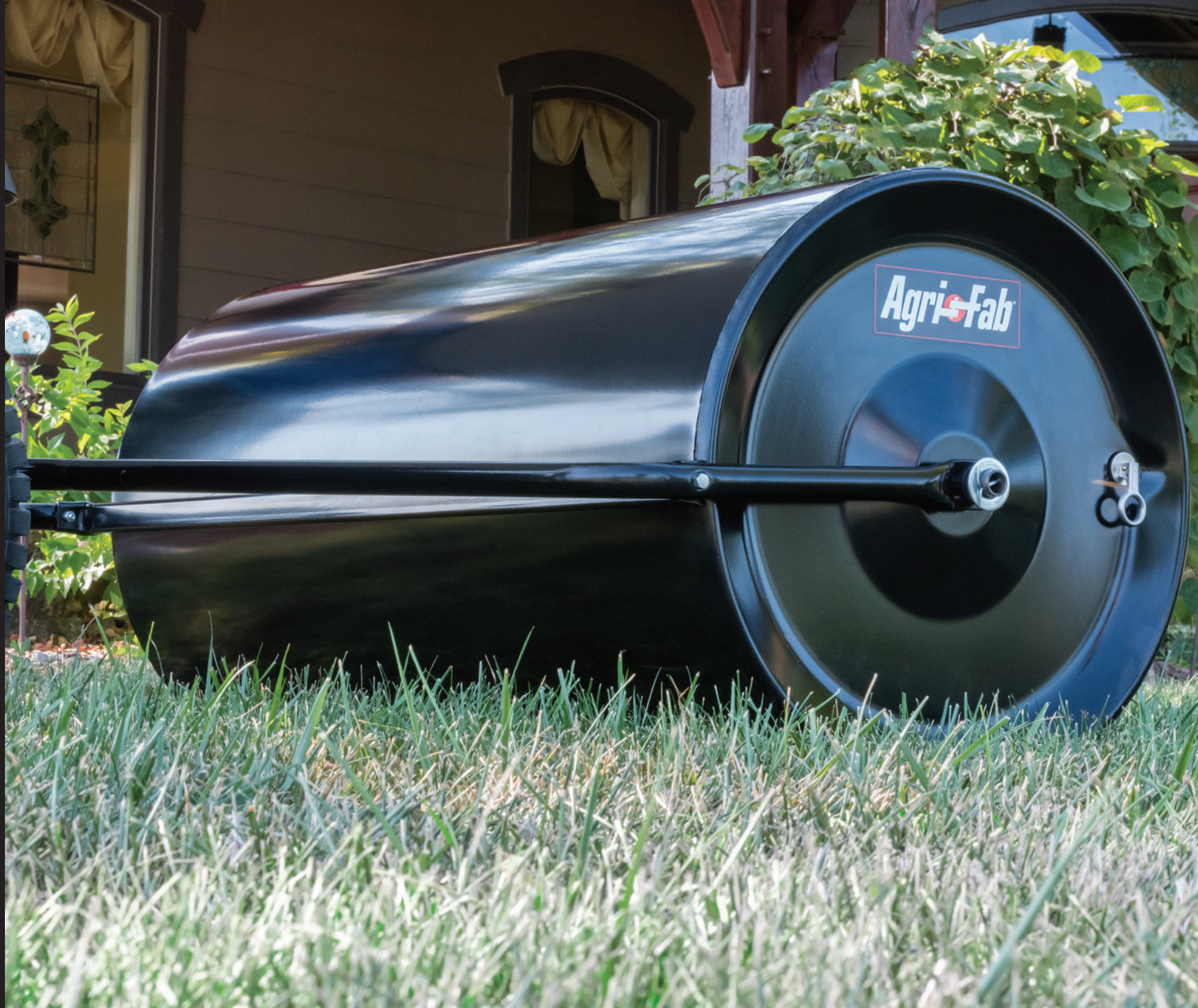




# ROLLERS

**Agri-Fab** Lawn Care Made Easy

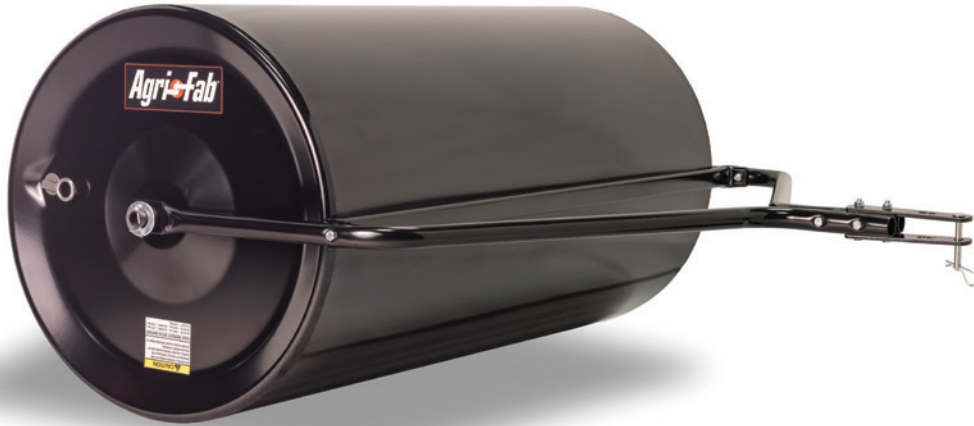
MADE IN  
USA  
WITH GLOBAL COMPONENTS





## 24" x 48" Steel Tow Roller

MODEL 45-0216



- Holds up to 910 lbs. when filled with water.
- Rust-resistant powder coat paint.



*All Agri-Fab® rollers have a drain/fill plug that empties easily and fills with a regular garden hose.*

## 24" x 36" Steel Tow Roller

MODEL 45-0179



- Holds up to 640 lbs. when filled with water.
- Rust-resistant powder coat paint.

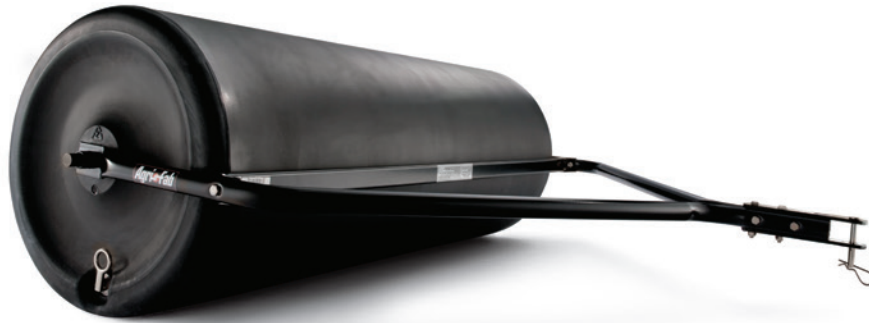


*All Agri-Fab® rollers have a scraper bar that prevents clumps of soil from compacting on drum.*



## 18" x 48" Poly Tow Roller

MODEL 45-0269



- Holds up to 550 lbs. when filled with water.
- Light weight and rust-proof poly drum.



*All Agri-Fab® rollers have a drain/fill plug that empties easily and fills with a regular garden hose.*

## 18" x 36" Poly Tow Roller

MODEL 45-0268



- Holds up to 400 lbs. when filled with water.
- Light weight and rust-proof poly drum.



*All Agri-Fab® rollers have a scraper bar that prevents clumps of soil from compacting on drum.*



# 18" x 24" Push/Tow Poly Roller

MODEL 45-0267



- Holds up to 250 lbs. when filled with water.
- Light weight and rust-proof poly drum.



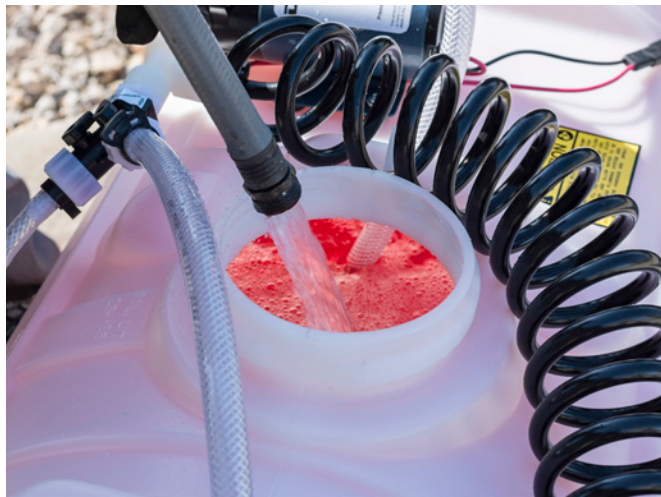
*Roller drain/fill plug empties easily and fills with a regular garden hose.*



*Versatile design can be towed or pushed by hand.*







**About Sprayers**

Keeping your lawn and garden looking great can be tough. Liquid fertilizers, herbicides, and pesticides are convenient and effective for large lawn and garden applications.

Agri-Fab® sprayers are available in two sizes and include a hand wand for targeted spray around trees and bushes.







Agri-Fab



## 25 Gallon Tow Sprayer

MODEL 45-0293



- No clog spray nozzle.
- Easily and quickly attaches to all tractors.



*Roller drain/fill plug empties easily and fills with a regular garden hose.*



*Hand wand sprays up to 30 feet for hard to reach trees and bushes.*

## 15 Gallon Tow Sprayer

MODEL 45-0292



- No clog spray nozzle.
- Easily and quickly attaches to all tractors.



*Maneuverable flat free tire for smooth transport.*



*Hand wand sprays up to 30 feet for hard to reach trees and bushes.*









**Why Fertilize?**

Your spreader is designed to evenly fertilize your lawn with nutrients it needs for growth, color, root strength and overall health.

Late summer and early fall are the best times of the year to fertilize your lawn. The summer is an excellent time to give your lawn a boost. In the fall, fertilizing gives your lawn extra strength for the winter.







Agri-Fab



## 130 lb. Push Salt Spreader

MODEL 45-0502 PATENT D602,045 & PATENT PENDING



- 130 lb. capacity covers about 1/2 acre (25,000 sq. ft.).\*
- Included deflector narrows spread for sidewalks.



*Included grate improves material flow and spreader performance.*



*Included cover keeps material dry.*

## 130 lb. Push Spreader

MODEL 45-0462 PATENT D602,045 & PATENT PENDING



- 130 lb. capacity covers about 1/2 acre (25,000 sq. ft.).\*
- Professional style enclosed gearbox.



*Large pneumatic tires roll easily over any terrain.*



*Direct rod control.*



## 110 lb. Push Spreader

MODEL 45-0526



- 110 lb. capacity covers about 1/3 acre (17,500 sq. ft.).\*
- Rust-proof poly hopper for long product life.



*Durable steel gear and pinion.*



*Easy to use controls.*

## 85 lb. Pro Push Spreader

MODEL 45-0532



- 85 lb. capacity covers about 1/4 acre (14,000 sq. ft.).\*
- Rust-proof poly hopper for long product life.



*Enclosed gearbox.*



*Direct rod control.*



## 85 lb. Deluxe Push Spreader

MODEL 45-0531



- 85 lb. capacity covers about 1/4 acre (14,000 sq. ft.).\*
- Rust-proof poly hopper for long product life.



*Enclosed gearbox.*



*Easy to use controls.*

## 85 lb. Push Spreader

MODEL 45-0388



- 85 lb. capacity covers about 1/4 acre (14,000 sq. ft.).\*
- Rust-proof poly hopper for long product life.



*Enclosed gearbox.*



*Pneumatic tires roll over lawns easily.*



# 50 lb. Push Spreader

MODEL 45-0409



- Compact size for smaller lawns.
- Rust-proof poly hopper for long product life.



*Enclosed gearbox.*



*Durable poly wheels.*

# Hand-Held Spreader

MODEL 45-0282



- Easy to operate. Just fill and turn knob to spread.
- No assembly required. Use right out of the box.



*Great for spreading in small areas.*



*Precise control device spreads just the right amount.*



## 185 lb. Tow Spreader

MODEL 45-0329



- 185 lb. capacity covers about 1 acre (40,000 sq. ft.).\*
- Included cover keeps material dry.



*Included grate improves material flow and spreader performance.*



*Extra-large 15" x 6" pneumatic tires with ball bearings and disengage feature.*

## 130 lb. Tow Spreader

MODEL 45-0463 PATENT D602,045 & PATENT PENDING



- 130 lb. capacity covers about 1/2 acre (25,000 sq. ft.).\*
- Professional style enclosed gearbox.



*Large pneumatic tires roll easily over any terrain.*



*Direct rod control.*



# 110 lb. Tow Spreader

MODEL 45-0527



- 110 lb. capacity covers about 1/3 acre (17,500 sq. ft.).\*
- Rust-proof poly hopper for long product life.



*Durable steel gear and pinion.*



*Direct rod control.*

# 85 lb. Tow Spreader

MODEL 45-0530



- 85 lb. capacity covers about 1/4 acre (14,000 sq. ft.).\*
- Rust-proof poly hopper for long product life.



*Enclosed gearbox.*



*Pneumatic tires roll over lawns easily.*



## 175 lb. Tow Drop Spreader

MODEL 45-0288



- 175 lb. capacity covers about 1 acre (40,000 sq. ft.).\*
- Durable rustproof poly hopper.



*Pneumatic tires allow for smooth transport.*



*Galvanized steel agitator is rust resistant and easy to clean.*

Specifications subject to change without notice or obligation.

## 175 lb. Tow Spiker/Spreader

MODEL 45-0545

**NEW FOR  
2019**



- 175 lb. capacity covers about 1 acre (40,000 sq. ft.).\*
- Combined design lets you aerate and spread in one pass.



*Flat free tire for hassle-free maintenance.*



*Galvanized steel agitator is rust resistant and easy to clean.*

\*Depending on material used and speed of application.



# 100 lb. Tow Spiker/Spreader

MODEL 45-0543

NEW FOR  
2019



- 100 lb. capacity covers about 1/3 acre (17,500 sq. ft.).\*
- Combined design lets you aerate and spread in one pass.



*Flat free tire for hassle-free maintenance.*



*Galvanized steel agitator is rust resistant and easy to clean.*





## Deflector Kit

MODEL 68871 AND 69115



- Easily attaches to Agri-Fab® spreaders without tools.
- Narrows spread width for sidewalks or to protect plants.



68871 kit fits all 110 and 130 lb. Agri-Fab® Spreaders.



69115 kit fits all 85 lb. Agri-Fab® Spreaders (excluding 45-0388).

## Grate Kit

MODEL 69411 AND 69128



- Easily attaches to Agri-Fab® spreaders without tools.
- Grate improves material flow and spreader performance.



69411 kit fits all 110 and 130 lb. Agri-Fab® Spreaders.



69128 kit fits all 85 lb. Agri-Fab® Spreaders.

Specifications subject to change without notice or obligation.



## Hopper Covers



MODEL 40825

Fits Agri-Fab® 185 lb. broadcast spreaders.



MODEL 40883

Fits Agri-Fab® 85 lb. broadcast spreaders.



MODEL 41316

Fits Agri-Fab® 110 lb. and 130 lb. spreaders.

- Hopper covers are ideal for keeping spreader material dry.
- Agri-Fab® hopper covers are made of vinyl with nylon for durability.





# WHY, WHEN, AND HOW TO FERTILIZE YOUR LAWN

## FERTILIZING

### WHY fertilize?

Fertilizer is designed to feed your lawn with the nutrients it needs. These nutrients are Nitrogen, Phosphorus, and Potassium (N, P, K). When fertilizer is applied properly, your lawn will look better and be healthier than before.

### WHAT type of fertilizer should I use?

Fertilizers are available in different varieties, with different amounts of active ingredients. Ingredients are always listed in the N-P-K order. Fertilizer with a high N number such as 12-8-4 should be used for lush plants. To strengthen the root system, choose a high P number, such as 5-10-5. A good all-around fertilizer would be 10-10-10.



### WHEN should I fertilize?

Late summer and early fall are the best times of year to fertilize your lawn.

Fertilizing during the summer gives your lawn the strength to thrive during its main growing season. A well-fed lawn will be better equipped to handle extreme weather conditions and pests.

Fertilizing in the fall gives your lawn a boost for the winter and will help it in the early spring.

We don't recommend fertilizing your lawn in the spring because the extra nitrogen can cause a growth spurt that is actually bad for the lawn. If you must fertilize in the spring, choose a low nitrogen fertilizer.

### HOW do I apply fertilizer?

Start at the edges of your lawn first. For a square or rectangular lawn, make two passes at opposite ends of the lawn; for an irregular or circular lawn, make two passes around the perimeter. Then move back and forth in straight lines between the edges, making sure to turn the spreader off when turning around. With a drop spreader, overlap the path of the wheel to avoid striping.

After fertilizing, water the lawn thoroughly. You want to wash the nutrients off the leaves and into the soil.

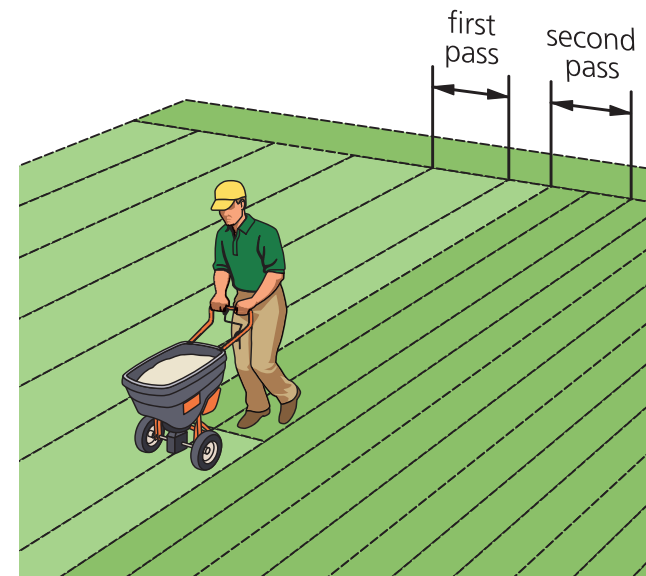
### HOW MUCH fertilizer should I use?

Refer to the instruction on your fertilizer bag.



## HOW TO MEASURE THE SIZE OF YOUR LAWN

You'll need to know the size of your lawn to determine how much product you need. It also helps when choosing lawn equipment.



- For a rectangular or square lawn, simply multiply the length times the width for total square feet.
- If your lawn is a triangle, multiply the length of the base times the height, and divide that number by 2.
- If your lawn is circular (or close), measure the distance from the center of the lawn to the edge. This is the radius. Multiply that number by itself ( $r^2$ ), and then multiply by pi (3.14).
- If your lawn is irregular, you can break it up into smaller areas, figure those sizes and then add them up.
- Convert square footage to acreage by dividing your total area by 43,560, the number of square feet in a single acre.



# CHOOSING THE RIGHT SPREADER FOR YOUR LAWN

## SPREADERS

There are two basic types of fertilizer spreaders: drop and broadcast, and they come in a variety of sizes. Use the charts below to help you decide which type of spreader is best for your job and the size you will need based on yard size.

### Recommended Type of Spreader

TYPE	MATERIAL			
	Grass Seed	Fertilizer	Granular Herbicide	Ice Melt
DROP	better	good	best	good
BROADCAST	good	best	good	best

*(Hand-held spreaders are useful tools also, and are good for over-seeding or fertilizing small areas, or for applying ice melt to driveways and sidewalks.)*

### Recommended Spreader Size

YARD SIZE	SPREADER SIZE
Approx. 1 acre/40,000 sq. ft.	185 lb.
Approx. ½ acre/25,000 sq. ft.	130 lb.
Approx. ⅓ acre/14,500 sq. ft.	100 lb.
Approx. ¼ acre/10,800 sq. ft.	85 lb.

1 acre = 43,560 sq. ft.







**Why Use A Sweeper?**

Many people are unaware of the benefits of a lawn sweeper. Most use a rake to clear away leaves, grass clippings, and debris. That's hard, time consuming work. With a sweeper, the job becomes much easier on you and your lawn.

Sweepers have some advantages when compared to baggers. The sweeper holds almost twice as much and you can also empty it without getting off the tractor.







Agri-Fab





# SWEEPERS

**Agri-Fab** Lawn Care Made Easy

**MADE IN USA**  
WITH GLOBAL COMPONENTS





# 52" Lawn Sweeper

MODEL 45-0546

NEW FOR  
2019



- Extra-large flow through bag so you don't have to stop as often.
- Remove and fold bag without tools for easy storage.



*Easily and quickly attaches to all tractors.*



*Easy brush height adjustment.*

# 44" Lawn Sweeper

MODEL 45-0492 PATENT 8,640,294; 8,646,141; 8,549,689



- Extra-large flow through bag so you don't have to stop as often.
- Hopper bag handle for easy and controlled emptying of bag.



*Patented off-set hitch for sweeping while you mow.*



*Collapses and folds for easy storage.*



## 42" Lawn Sweeper

MODEL 45-0521 PATENT 8,640,294 & 8,646,141



- Large flow through bag so you don't have to stop as often.
- Remove and fold bag without tools for easy storage.



*Easily and quickly attaches to all tractors.*



*Easy brush height adjustment.*

## 42" Lawn Sweeper

MODEL 45-0320



- Stamped steel housing will last season after season.
- Remove and fold bag without tools for easy storage.



*Easily and quickly attaches to all tractors.*



*Easy brush height adjustment.*



# 26" Push Lawn Sweeper

MODEL 45-0218



- Lightweight and small, great for tight areas or smaller yards.
- Poly housing and wheels are sturdy and easy to maintenance.



*Folds for easy storage.*



*Easy brush height adjustment.*







### Why Use A Vac?

Designed for home owners with large lawns and lots of trees; the Agri-Fab® Mow-N-Vac® and Chip-N-Vac® are ideal for maintaining large properties.

Both vacs mulch all your leaves and other debris while cleaning your property. The Chip-N-Vac® easily chips tree branches up to 2" in diameter.







Agri-Fab



## Hard Top Chip-N-Vac®

MODEL 45-0540



- Large 32 cubic foot capacity.
- Durable vented hard top design reduces airborne dust.



*Easily lift, attach, or move using the handle.*



*Turns tree branches up to 2" in diameter into mulch.*

Specifications subject to change without notice or obligation.

## Hard Top Mow-N-Vac®

MODEL 55188



- Large 32 cubic foot capacity.
- Durable vented hard top design reduces airborne dust.



*Easily lift, attach, or move using the handle.*



*Foot lever release for easy empty.*



## Remote Hose Kit

MODEL 45-0253



- Fits Agri-Fab® Mow-N-Vac® or Chip-N-Vac®.
- Attaches quickly and easily.



*Versatile hose has a 12' reach.*



*Provides up to 80 MPH suction.*

## Hose Kit

MODEL 65640



- Allows Mow-N-Vac® and Chip-N-Vac® to be used with ZT mowers.
- Provides up to 3.5' additional feet of hose.



# LAWN CARE

## SPRING



- Sweep up winter lawn debris to prevent mold.
- Roll lawn to level out uneven areas caused by freezing and thawing soil.
- Aerate to open up compacted soil.
- Overseed bare areas.
- Apply pre-emergent herbicide in early spring.
- Start mowing only after grass has started to actively grow again. (Mower height depends on your species of grass and your climate, but a general rule is to mow slightly lower in the spring and fall; higher in the summer.)
- Apply a light dressing of low-nitrogen fertilizer in late spring.

## SUMMER



- Apply grub control product in early summer.
- Mow grass regularly. (Adjust mower height in weather extremes: in drought conditions, mow higher and less often; in a wet season, mow slightly lower and more often.)
- Trim grass edges.
- Fertilize and feed if necessary, but do not use these products during dry spells.
- Water grass deeply and only when really needed.





# FALL



- De-thatch and sweep up debris.
- Aerate compacted soil if you didn't do this in the spring.
- Overseed bare areas if you didn't do this in the spring.
- Apply seed about a month before first frost.
- Apply a light dressing of fertilizer once in early fall, and again in late fall.
- Remove leaves.
- For final mowing, raise the mower height slightly.
- Spray perennial weeds.

# WINTER



- Perform maintenance on lawn care equipment according to your owner's manual.
- Sharpen mower blades.
- Remove fallen branches and winter debris as necessary.
- Apply fungicide in late winter/early spring.



Accept no compromises, choose only quality outdoor tools & equipment.