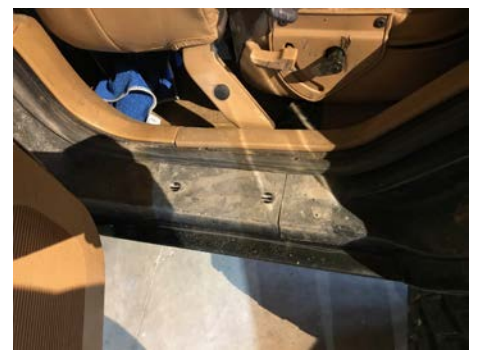


ROCKER GUARD INSTALLATION



1. REMOVE PHILLIPS SCREWS AND REMOVE FRONT AND REAR ROCKER PLASTIC PANELS.

PLASTIC SHOWN REMOVED.



2. CUT OUT EXISTING ROCKER PANEL AS SHOWN.



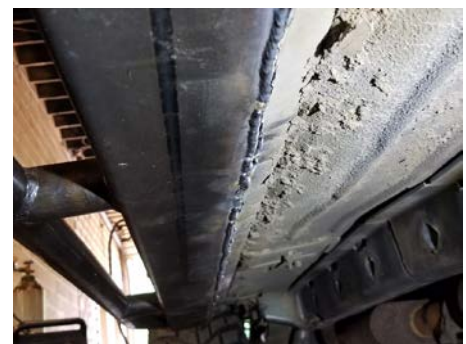
ROCKER PANEL SHOWN REMOVED.



3. TRIM AND FIT ROCKER GUARD WELDMENT.
4. TACK WELD IN PLACE WITH 1/8" X 3/4" STEEL STRIP LOCATED AS SHOWN.



FIT AS SHOWN



5. FULLY FINISH WELD. WELD IN 6" SECTIONS MOVING AROUND.