

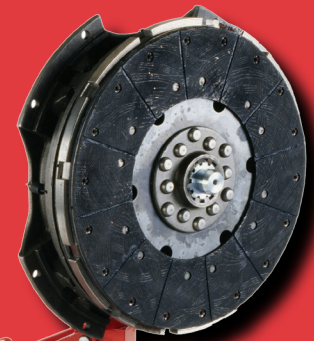


# HEAVY DUTY CLUTCH JACK

## Model 3700

A highly efficient design that provides one-man capabilities to remove, install and transport heavy-duty clutches. This heavy-duty unit has greater capacity than most competitive units and has the added versatility of being able to convert the optional adapters for flywheels, driveshafts, starter motors, auxiliary cases, differentials, brake drums and camelback springs.

- 500 lb. capacity
- Patented clutch head assembly (U.S. Patents 5,251,875 and 5,033,717), turns 360° and pivots side-to-side for efficient clutch/engine alignment
- Two splined alignment shafts (2" OD x 1" pilot and 1-3/4" OD x 1" pilot)
- Lifts from 13" to 39"
- Clutch assemblies can easily be built on the vertical shaft and then positioned easily under the truck
- Pump handle "tail" rotates 360° for ease of operation in virtually any work position
- Unique pinned alignment shaft allows technician to remove jack to install the clutch assembly without obstruction
- Frame 36-1/2" L x 22" W
- Ship weight 138 lbs



## RELATED PRODUCTS



**Model 3751**  
Flywheel Adapter



**Model 3755**  
Starter Motor Adapter



**Model 3754**  
Driveshaft Adapter



**Model 3757**  
Differential Adapter



**Model 3756**  
Auxiliary Case Adapter



**Model 3758**  
Brake Drum Adapter



**Model 3759**  
Camelback Spring Adapter



## MODEL 3700 - "CLUTCH HOUND" JACK

PART ORDER NUMBER	KIT DESCRIPTION	KIT INCLUDES	
		REF. #	DESCRIPTION
3700KHU	HYDRAULIC UNIT	2	POWER UNIT
3700K23	PUMP HANDLE	23	PUMP HANDLE
3700K16	CASTER	16	CASTER WITH BRAKE
3700K24	CASTER	24	CASTER
3700K11	HOLDER ASM.	11	HOLDER ASSEMBLY
3750	SPLINE	9	CLUTCH ADAPTER-.983 PILOT
3752	SPLINE	9	CLUTCH ADAPTER-1.180 PILOT
NOT AVAILABLE SEPARATELY		1	SIDE PLATE ASSY
NOT AVAILABLE SEPARATELY		3	HEX BOLT
NOT AVAILABLE SEPARATELY		4	SPRING WASHER
NOT AVAILABLE SEPARATELY		5	LIFT ARM ASSEMBLY
NOT AVAILABLE SEPARATELY		6	SPLIT PIN
NOT AVAILABLE SEPARATELY		7	BLOCK LINKAGE
NOT AVAILABLE SEPARATELY		8	RETAINING RING
NOT AVAILABLE SEPARATELY		12	LINKAGE AXLE
NOT AVAILABLE SEPARATELY		13	RETAINING RING
NOT AVAILABLE SEPARATELY		14	BOLT
NOT AVAILABLE SEPARATELY		15	LINKAGE AXLE
NOT AVAILABLE SEPARATELY		17	NUT
NOT AVAILABLE SEPARATELY		18	SPRING WASHER
NOT AVAILABLE SEPARATELY		19	HEX BOLT
NOT AVAILABLE SEPARATELY		20	LONG LINKAGE
NOT AVAILABLE SEPARATELY		21	SHAFT ARM
NOT AVAILABLE SEPARATELY		22	RETAINING RING
NOT AVAILABLE SEPARATELY		25	HOLDER

\* ONLY PARTS WITH A "PART ORDER NUMBER" ARE AVAILABLE FOR SALE.

DO NOT COPY OR DISTRIBUTE THIS MATERIAL WITHOUT PERMISSION OF AFF, INC.





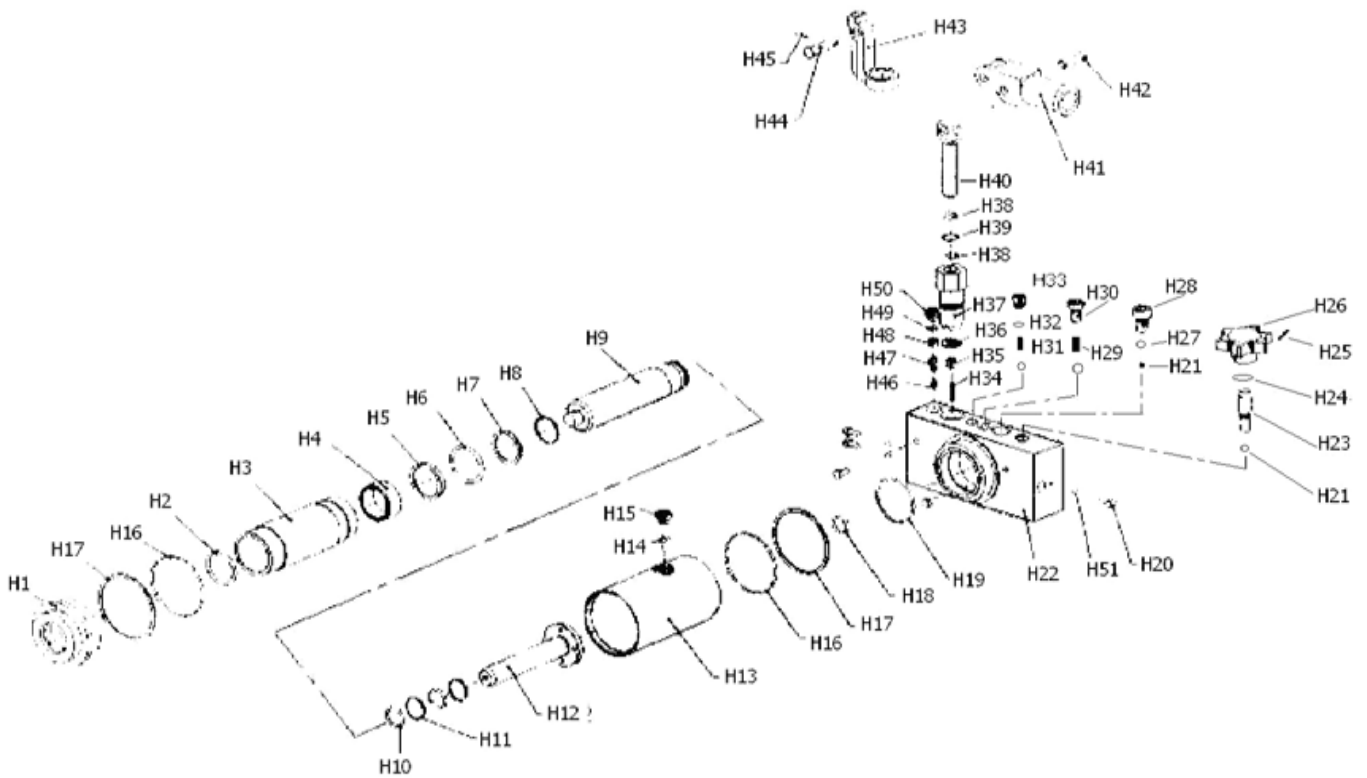
# MODEL 3700 - "CLUTCH HOUND" JACK

PART ORDER NUMBER	KIT DESCRIPTION	KIT INCLUDES	
		REF. #	DESCRIPTION
3700KRK	REPAIR KIT	H2	O-RING
		H4	GUIDE
		H5	O-RING RETAINER
		H6	O-RING
		H7	RETAINIG RING
		H8	RETAINIG RING
		H10	O-RING 2 REQ.
		H11	WASHER 2 REQ.
		H14	O-RING
		H16	O-RING 2 REQ.
		H17	WASHER 2 REQ.
		H18	O-RING
		H19	O-RING
		H21	BALL 6MM 4 REQ.
		H24	O-RING
		H27	BALL 9MM
		H29	RELEASE VALVE SPRING
		H31	RELEASE VALVE SPRING
		H32	O-RING
		H34	RELEASE VALVE SPRING
H36	EASLING WASHER		
H38	O-RING 2 REQ.		
H39	DUST SEAL		
H46	SAFETY VALVE		
H47	RELIEF VALVE SPRING		
H49	O-RING		
H51	BALL 5MM 7 REQ.		
3700K26	RELEASE VALVE ASM.	H21	BALL6MM
		H23	VALVE STEM
		H24	O-RING
		H25	PIN
		H26	KNOB
3700K37	PUMP ASM.	H37	PUMP CASE
		H38	O-RING 2 REQ.
		H39	SEALING WASHER
		H40	PUMP PLUNGER
3700K41	HANDLE SOCKET ASM.	H41	HANDLE SOCKET
		H42	PIN
		H43	SWIVEL BASE
		H44	PIN
		H45	COTTER PIN
NOT AVAILABLE SEPARATELY		H1	TANK NUT
NOT AVAILABLE SEPARATELY		H3	CYLINDER
NOT AVAILABLE SEPARATELY		H9	RAM
NOT AVAILABLE SEPARATELY		H12	RAM
NOT AVAILABLE SEPARATELY		H13	CYLINDER OUTER CASE
NOT AVAILABLE SEPARATELY		H20	BOLT
NOT AVAILABLE SEPARATELY		H22	VALVE BASE
NOT AVAILABLE SEPARATELY		H48	REGULATE BOLT

**\* ONLY PARTS WITH A "PART ORDER NUMBER" ARE AVAILABLE FOR SALE.**

**DO NOT COPY OR DISTRIBUTE THIS MATERIAL WITHOUT PERMISSION OF AFF, INC.**

# MODEL 3700 - "CLUTCH HOUND" JACK HYDRAULIC UNIT



**\* ONLY PARTS WITH A "PART ORDER NUMBER" ARE AVAILABLE FOR SALE.**

**DO NOT COPY OR DISTRIBUTE THIS MATERIAL WITHOUT PERMISSION OF AFF, INC.**