



**AMERICAN FORGE & FOUNDRY, INC.™**

## **3 1/2 TON HEAVY-DUTY DOUBLE-PUMPER FLOOR JACK**

Model 350SS

AFF's Model 350SS is "forge-tough" for daily service use. Thanks to AFF's double-pumper advantage (see inset) for quicker lifting, it has found a home in tire shops, repair facilities and roadside assistance situations - any place where ruggedness, strength and durability are required.

- Lifts from 4" to 19 1/2"
- Universal joint technology for precise release valve control
- Tough powder-coated frame for longer shop life
- Pinned steel saddle (1 1/8" stud) with rubber pad for added vehicle protection
- Safety valve to prevent overloading
- Rear-mounted 2 3/8" swivel casters for ease of maneuverability
- Steel yoke
- One-piece 50 1/4" padded handle parks upright
- Thicker, wider flanged side plates for strength and stability

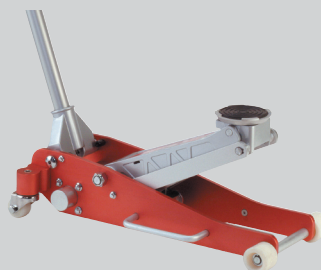


### **RELATED PRODUCTS**



**Model 200T**

2 Ton Low Rider "Tuner" Jack



**Model 200SS**

2 Ton Aluminum "Racing" Jack



**Model SS6**

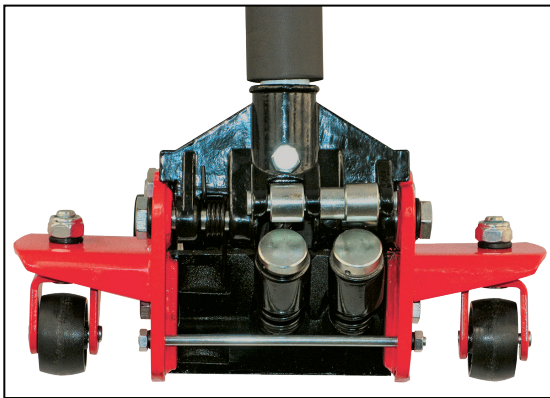
6 Ton Ratchet Style Safety Stands



**AMERICANFORGE&FOUNDRY™**

## PROFESSIONAL HEAVY DUTY FLOOR JACKS

- ✓ Heavy gauge steel construction
- ✓ Twin hydraulic system for maximum speed
- ✓ Universal joint technology provides smooth descent
- ✓ Flanged side plates for increased strength and stability
- ✓ Constructed with safety valve to prevent overloading
- ✓ Pinned and padded saddle for extra vehicle protection
- ✓ Tough powder coated frame for long shop life



**Double Pump For Maximum Speed**  
*(included on all models)*



**2 PC Handle For Easy Shipping**



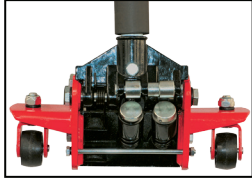
**MODEL 350SS**

MODEL	CAPACITY	HANDLE	LOW HEIGHT	HIGH HEIGHT	CHASSIS LENGTH	OVERALL WIDTH (FRONT)	OVERALL WIDTH (REAR)	SHIP WEIGHT
200T	2 ton	1 pc	2.75"	20.00"	27.00"	11.74"	15.00"	99 lbs
202T	2 ton	2 pc	2.75"	20.00"	27.00"	11.74"	15.00"	104 lbs
320SS	2.5 ton	1 pc	5.00"	21.00"	28.50"	9.00"	13.50"	101 lbs
322SS	2.5 ton	2 pc	5.00"	21.00"	28.50"	9.00"	13.50"	106 lbs
300T	3 ton	1 pc	3.75"	21.50"	30.75"	11.38"	14.50"	104 lbs
302T	3 ton	2 pc	3.75"	21.50"	30.75"	11.38"	14.50"	109 lbs
350SS	3.5 ton	1 pc	4.00"	19.50"	29.00"	11.25"	15.00"	119 lbs
352SS	3.5 ton	2 pc	4.00"	19.50"	29.00"	11.25"	15.00"	124 lbs

# Loaded With Power....Built With Precision

## ONE PIECE HANDLES

**2 TON LOW PROFILE FLOOR JACK MODEL 200T**



**2 TON LOW PROFILE FLOOR JACK w/2 PC HANDLE MODEL 202T**

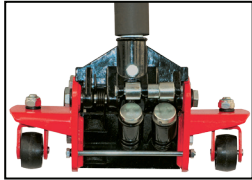


**HOT  
NEW PRODUCT!**



**2.5 TON PROFESSIONAL HEAVY DUTY FLOOR JACK MODEL 320SS**

**HOT  
NEW PRODUCT!**



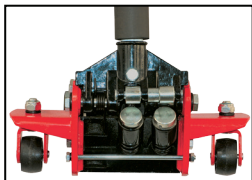
**2.5 TON PROFESSIONAL HEAVY DUTY FLOOR JACK w/2 PC HANDLE MODEL 322SS**



**HOT  
NEW PRODUCT!**



**3 TON PROFESSIONAL HEAVY DUTY FLOOR JACK MODEL 300T**



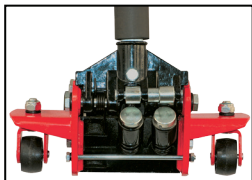
**3 TON PROFESSIONAL HEAVY DUTY FLOOR JACK w/2 PC HANDLE MODEL 302T**



**HOT  
NEW PRODUCT!**



**3.5 TON PROFESSIONAL HEAVY DUTY FLOOR JACK MODEL 350SS**



**3.5 TON PROFESSIONAL HEAVY DUTY FLOOR JACK w/2 PC HANDLE MODEL 352SS**



**HOT  
NEW PRODUCT!**





## MODEL 350SS - 3.5 TON DOUBLE-PUMPER FLOOR JACK

PART ORDER NUMBER	KIT DESCRIPTION	KIT INCLUDES	
		REF. #	DESCRIPTION
350SSK24	HANDLE	23	HANDLE BUMPER
		24	HANDLE
350SSK20	HANDLE RETAINER	20	BOLT
350SSK40	SADDLE COMPLETE	40	SADDLE
		41	RUBBER COVER
350SSK22	HANDLE SPRING	22	<b>HANDLE SPRING</b>
350SSKHU	HYDDRAULIC UNIT COMPLETE	28	POWER UNIT COMPLETE
350SSK27	RELEASE VALVE	27	RELEASE ASSEMBLY
350SSK3	FRONT WHEEL	1	RETAINING RING
		2	WASHER
		3	WHEEL
350SSK12	CASTER	10	NUT M18
		11	SPRING WASHER
		12	CASTER ASSEMBLY
350SSK21	HANDLE SOCKET COMPLETE	16	BOLT X 2
		17	SPRING WASHER
		20	BOLT
		21	HANDLE SOCKET WITH ROLLERS
		22	SPRING , HANDLE RETURN
350SSKRK	REPAIR KIT	H3	O-RING RETAINER
		H4	O-RING
		H5	RETAINING RING
		H7	O-RING
		H10	SPRING, RELEIF VALVE
		H12	SEAL WASHER X 2
		H14	O-RING
		H14-1	SEAL RING
		H15	SEAL WASHER
		H25	O-RING
		H26	BALL 6
		H28	O-RING
		H29	O-RING
		H29-1	SEAL RING
		H31	BALL 10
		H32	BALL 8
		H34	BALL 5.5 (2)
		H36	SPRING, RELEIF VALVE
		H37	WASHER
		H38	O-RING
H39	OIL FILL PLUG		
H41	O-RING		
H42	O-RING		
H44	PIN 4X35		

\* ONLY PARTS WITH A "PART ORDER NUMBER" ARE AVAILABLE FOR SALE.

DO NOT COPY OR DISTRIBUTE THIS MATERIAL WITHOUT PERMISSION OF AFF, INC.



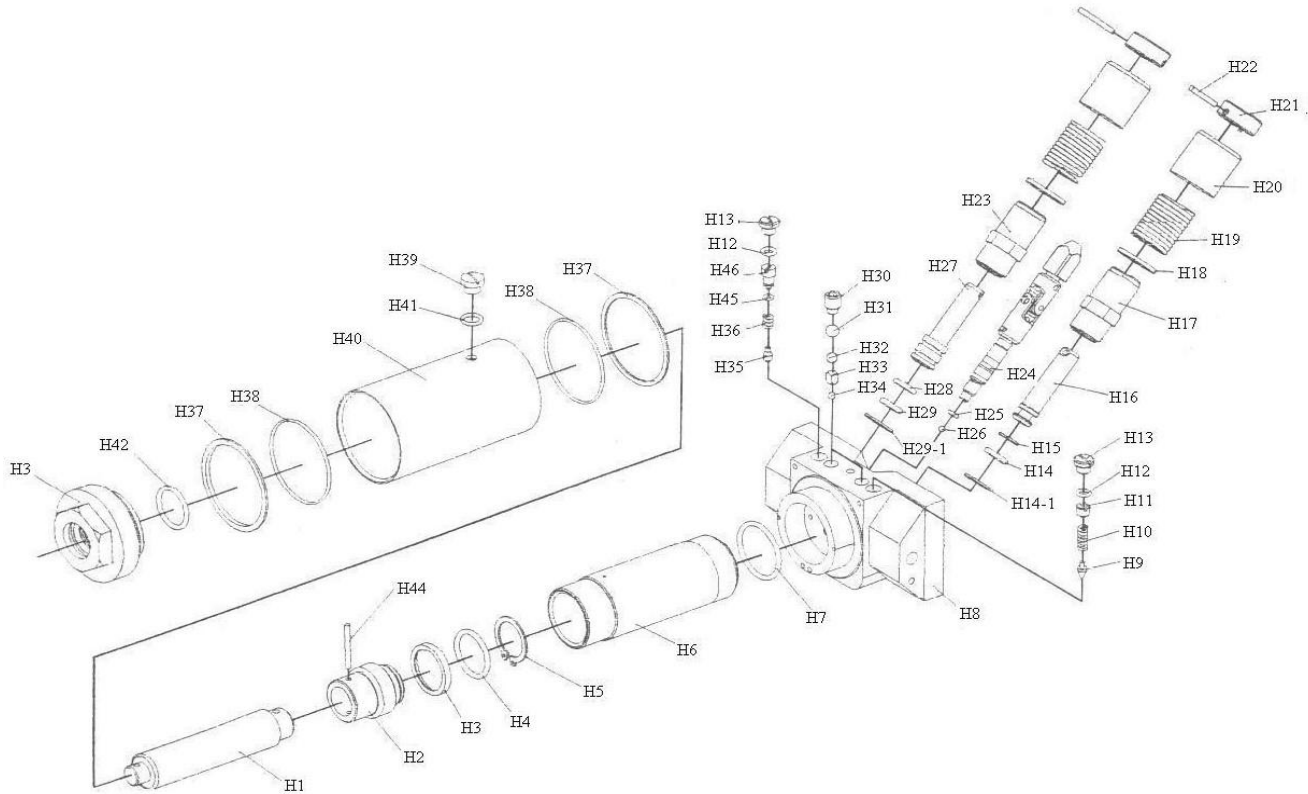
## MODEL 350SS - 3.5 TON DOUBLE-PUMPER FLOOR JACK

PART		KIT INCLUDES	
ORDER NUMBER	KIT DESCRIPTION	REF. #	DESCRIPTION
350SSKH23	VOLUME PUMP	H29	O-RING
		H28	O-RING
		H27	PUMP PISTON
		H23	PUMP CYLINDER
		H18	PUMP INNER
		H19	PUMP RETURN SPRING
		H20	PUMP OUTER COVER
		H21	PUMP COVER
		H22	PIN 4X35
350SSKH16	PRESSURE PUMP	H14	O-RING
		H15	SEAL WASHER
		H16	PUMP PISTON
		H17	PUMP CYLINDER
		H18	PUMP INNER
		H19	PUMP RETURN SPRING
		H20	PUMP OUTER COVER
		H21	PUMP COVER
		H22	PIN 4X35
NOT AVAILABLE	SEPARATELY	HU-1	RAM
NOT AVAILABLE	SEPARATELY	HU-2	RAM HEADER
NOT AVAILABLE	SEPARATELY	HU-6	CYLINDER
NOT AVAILABLE	SEPARATELY	HU-8	VALVE BASE
NOT AVAILABLE	SEPARATELY	HU-9	SAFTEY VALVE
NOT AVAILABLE	SEPARATELY	HU-11	REGULATING BOLT
NOT AVAILABLE	SEPARATELY	HU-13	SEAL BOLT
NOT AVAILABLE	SEPARATELY	HU-30	HIGH PRESSURE BOLT
NOT AVAILABLE	SEPARATELY	HU-33	SEPARATOR
NOT AVAILABLE	SEPARATELY	HU-35	SAFTEY VALVE
NOT AVAILABLE	SEPARATELY	HU-40	OUTER CYLINDER
NOT AVAILABLE	SEPARATELY	HU-43	TANK NUT
350SSK01	RETAINING RING	1	RETAINING RING FOR FRONT WHEEL
	& WASHER ONLY	2	WASHER
NOT AVAILABLE	SEPARATELY	4	SIDE PLATE
NOT AVAILABLE	SEPARATELY	5	BOLT
NOT AVAILABLE	SEPARATELY	6	WASHER
NOT AVAILABLE	SEPARATELY	7	HEX NUT
NOT AVAILABLE	SEPARATELY	8	SPRING WASHER
NOT AVAILABLE	SEPARATELY	9	HEX BOLT
NOT AVAILABLE	SEPARATELY	13	PULL ROD
NOT AVAILABLE	SEPARATELY	14	WASHER
NOT AVAILABLE	SEPARATELY	15	HEX NUT
NOT AVAILABLE	SEPARATELY	18	MACHINE SCREW ( 4)
NOT AVAILABLE	SEPARATELY	19	INSPECTION PLATE
350SSK23		23	HANDLE BUMPER ONLY
NOT AVAILABLE	SEPARATELY	29	SPRING
NOT AVAILABLE	SEPARATELY	30	SPLIT PIN
NOT AVAILABLE	SEPARATELY	31	TRACK RING
NOT AVAILABLE	SEPARATELY	32	BLOCK LINKAGE
NOT AVAILABLE	SEPARATELY	33	HEX NUT
NOT AVAILABLE	SEPARATELY	34	WASHER
NOT AVAILABLE	SEPARATELY	35	SHAFT ARM
NOT AVAILABLE	SEPARATELY	36	GREASE FITTING
NOT AVAILABLE	SEPARATELY	37	LONG LINKAGE
NOT AVAILABLE	SEPARATELY	38	RETAINING RING
NOT AVAILABLE	SEPARATELY	39	LIFT ARM ASSEMBLY

**\* ONLY PARTS WITH A "PART ORDER NUMBER" ARE AVAILABLE FOR SALE.**

**DO NOT COPY OR DISTRIBUTE THIS MATERIAL WITHOUT PERMISSION OF AFF, INC.**

# MODEL 350SS - 3.5 TON DOUBLE-PUMPER FLOOR JACK HYDRAULIC UNIT

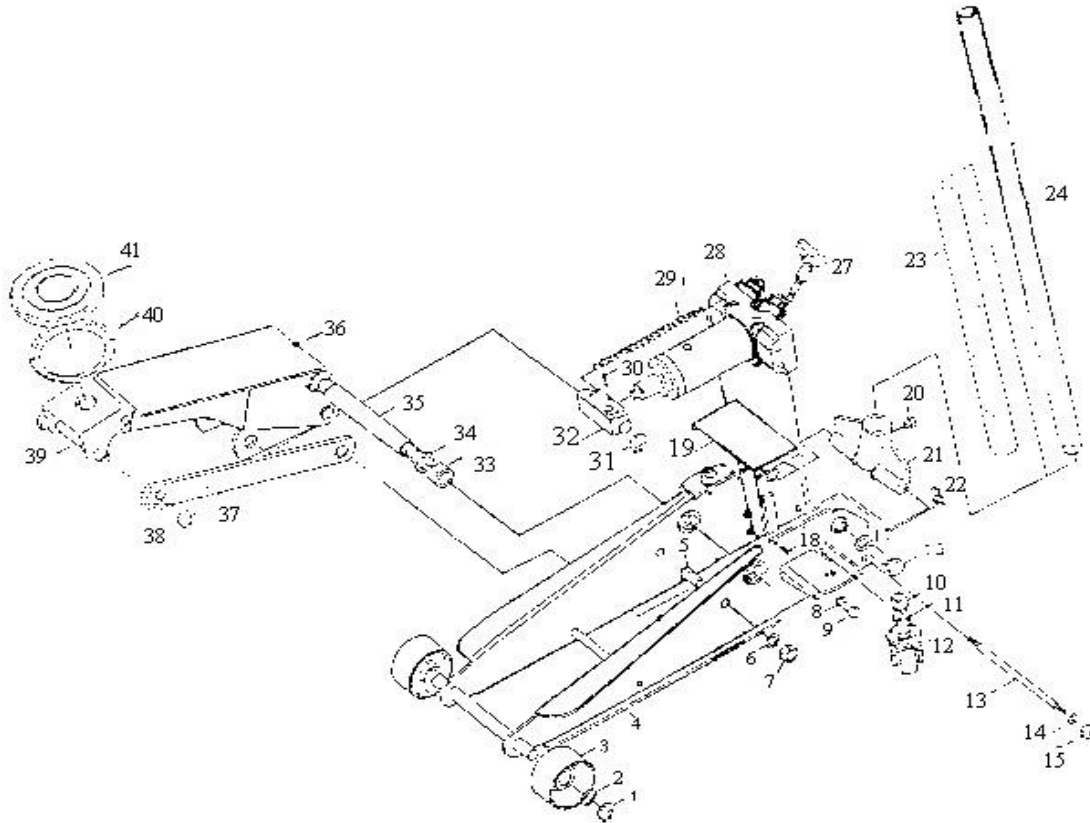


NO.	DESCRIPTIN	QTY	NO.	DESCRIPTIN	QTY	NO.	DESCRIPTIN	QTY
H1	RAM	1	H16	PUMP CORE	1	H31	BALL 10	2
H2	RAM HEADER	1	H17	PUMP CASE	1	H32	BALL 8	2
H3	O-RING RETURNER	1	H18	PUMP INNER CASE	2	H33	SEPARATOR	2
H4	O-RING	1	H19	PRESS SPRING	2	H34	BALL 5.5	2
H5	RETAINING RING	1	H20	PUMP OUTER CASE	2	H35	SAFETY VALVE	1
H6	CYLINDER	1	H21	PUMP COVER	2	H36	RELIEF VALVE SPRING	1
H7	O-RING	1	H22	PIN 4x30	2	H37	WASHER	2
H8	VALVE BASE	1	H23	PUMP CASE	1	H38	O-RING	2
H9	SAFETY VALVE	1	H24	RELEASE ASSEMBLY	1	H39	SEAL BOLT	1
H10	RELIEF VALVE SPRING	1	H25	O-RING	1	H40	CYLINDER OUTER CASE	1
H11	REGULATE BOLT	2	H26	BALL 6	1	H41	O-RING	1
H12	SEAL WASHER	2	H27	PUMP CORE	1	H42	O-RING	1
H13	SEAL BOLT	2	H28	O-RING	1	H43	TANK NUT	1
H14	O-RING	1	H29	O-RING	1	H44	PIN 4x35	1
H14-1	SEAL WASHER	1	H29-1	SEAL WASHER	1	H45	O-RING	1
H15	SEALING WASHER	1	H30	HIGH-PRESSURE BOLT	2	H46	REGULATE BOLT	1

**\* ONLY PARTS WITH A "PART ORDER NUMBER" ARE AVAILABLE FOR SALE.**

**DO NOT COPY OR DISTRIBUTE THIS MATERIAL WITHOUT PERMISSION OF AFF, INC.**

## MODEL 350SS - 3.5 TON DOUBLE-PUMPER FLOOR JACK EXPLODED VIEW



REF. NO.	DESCRIPTION	QTY.	REF. NO.	DESCRIPTION	QTY.
1	Retaining Ring	2	22	Tension Spring	2
2	Washer 20	2	23	Handle Bumper	1
3	Wheel	2	24	Handle	1
4	Side Plate Assy	1	25		
5	Bolt	2	26		
6	Washer 15	2	27	Release Assembly	1
7	Hex Nut M16	2	28	Power Unit Assy.	1
8	Spring Washer 12	2	29	Spring	2
9	Hex Bolt M12 x 20	2	30	Split Pin 4 x 25	1
10	Nut M18	2	31	Retaining Ring 25	2
11	Spring Washer 12	2	32	Block Linkage	1
12	Caster Assembly	2	33	Hex Nut 24	2
13	Pull Rod	1	34	Washer 24	2
14	Washer 12	2	35	Shaft Arm	1
15	Hex Nut M18	2	36	Grease Fitting	1
16	Ball	2	37	Long Linkage	2
17	Spring Washer 18	2	38	Retaining Ring 18	2
18	Screws	4	39	Lift Arm Assembly	1
19	Inspection Flare	1	40	Saddle	1
20	Cap	1	41	Rubber Saddle Pad	1
21	Handle Socket	1	42	Complete Sec. Kit	1

**\* ONLY PARTS WITH A "PART ORDER NUMBER" ARE AVAILABLE FOR SALE.**

**DO NOT COPY OR DISTRIBUTE THIS MATERIAL WITHOUT PERMISSION OF AFF, INC.**