



AMERICAN FORGE & FOUNDRY, INC.™

1.5 TON / 2 TON / 3 TON ALUMINUM RACING JACKS

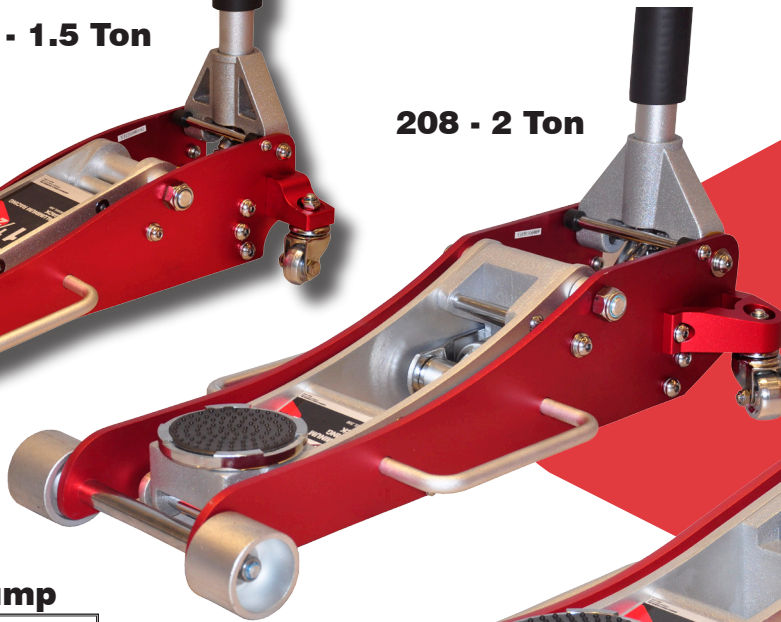
Models 206, 208, 210

AFF's "1 - 2 - 3 - PUNCH" rounds out our Automotive Floor Jack lineup with a complete line of Aluminum Service Jacks - Lightweight, Rugged and Super Fast all three of these new models comes with a Double Pump Plunger design to get the car in the air and the job done quickly.

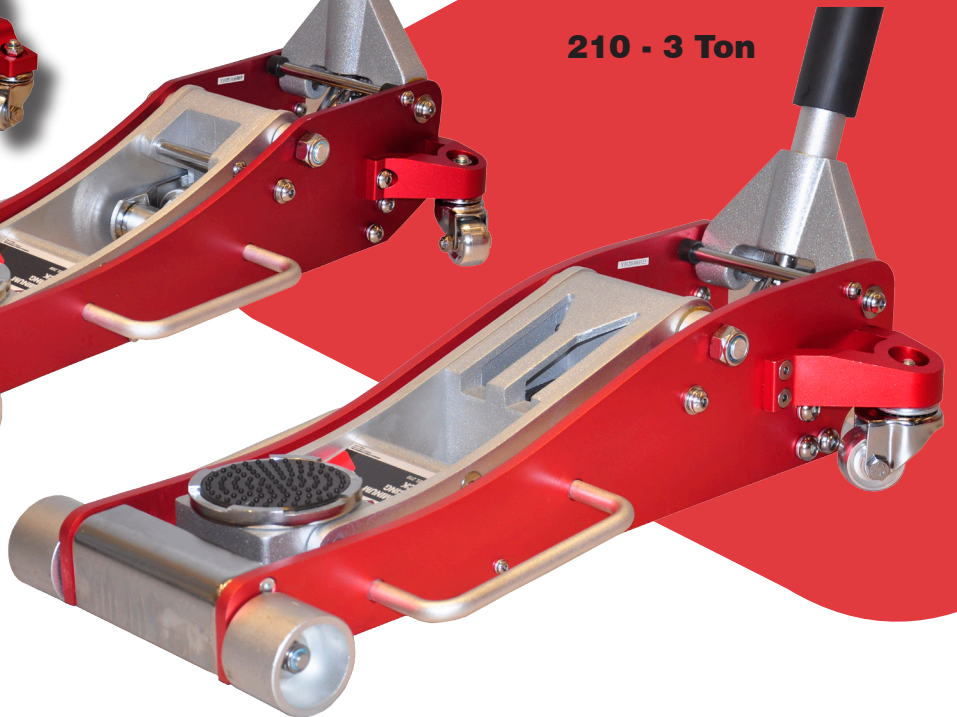
206 - 1.5 Ton



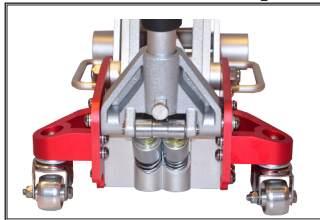
208 - 2 Ton



210 - 3 Ton



Double Pump



SPECIFICATIONS

Model 206 - 1.5 Ton Aluminum Racing Jack

- Double Pump Design
- Padded 2 Pc. Handle
- Padded Saddle
- Side Handle
- Front Roller

Low Height 3.25"
 High Height 15"
 Length 20.75"
 Width (widest) 10"
 Net Weight 26 lbs.
 Gross Weight 30 lbs.

Model 208 - 2 Ton Aluminum Racing Jack

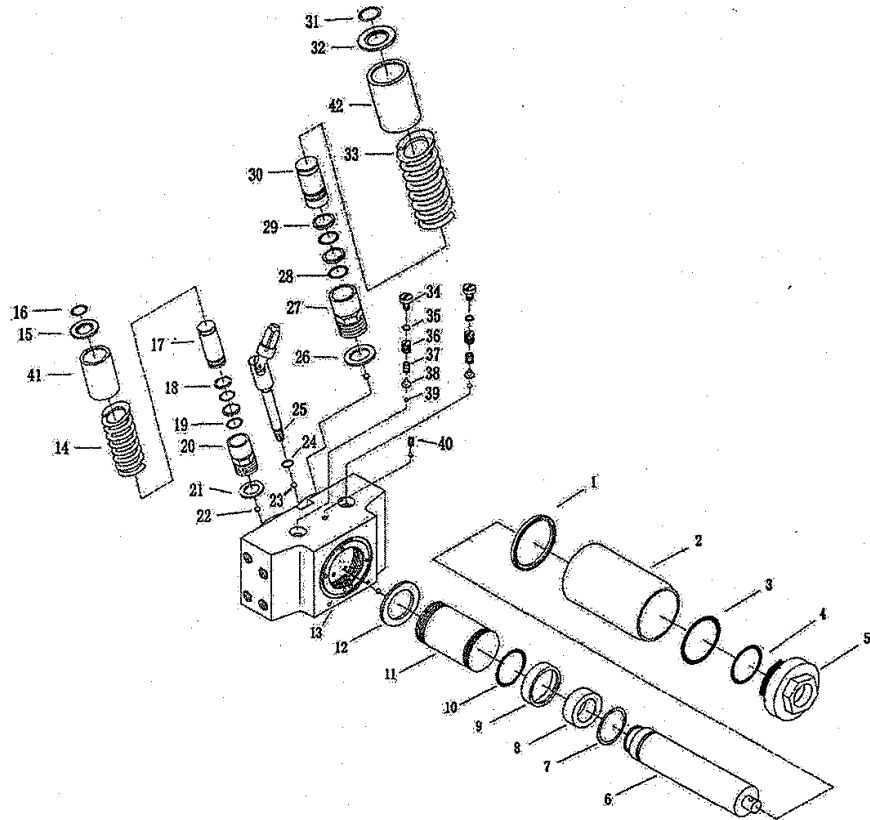
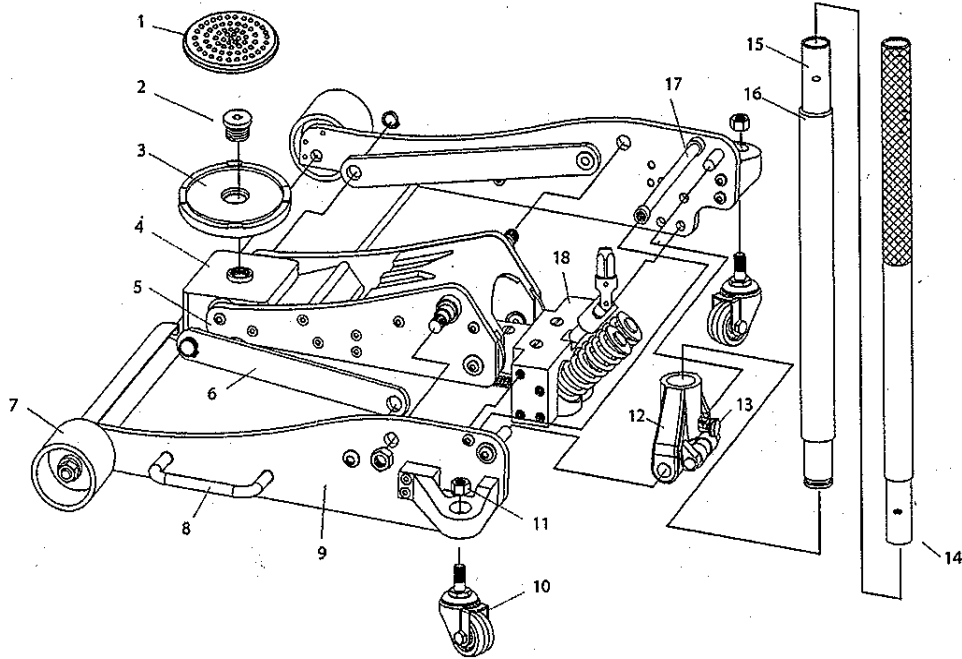
- Double Pump Design
- Padded 2 Pc. Handle
- Padded Saddle
- 2 Side Handles
- Front Wheels

Low Height 3.5"
 High Height 18.5"
 Length 25.75"
 Width (widest) 11.75"
 Net Weight 43 lbs.
 Gross Weight 46 lbs.

Model 210 - 3 Ton Aluminum Racing Jack

- Double Pump Design
- Padded 2 Pc. Handle
- Padded Saddle
- 2 Side Handles
- Front Wheels

Low Height 3.75"
 High Height 19.3"
 Length 26"
 Width (widest) 14"
 Net Weight 55 lbs.
 Gross Weight 58 lbs.



Rely on premium car jacks made by AFF if you're looking for quality and efficiency.