



AMERICAN FORGE & FOUNDRY, INC.™

1.5 TON / 2 TON / 3 TON ALUMINUM RACING JACKS

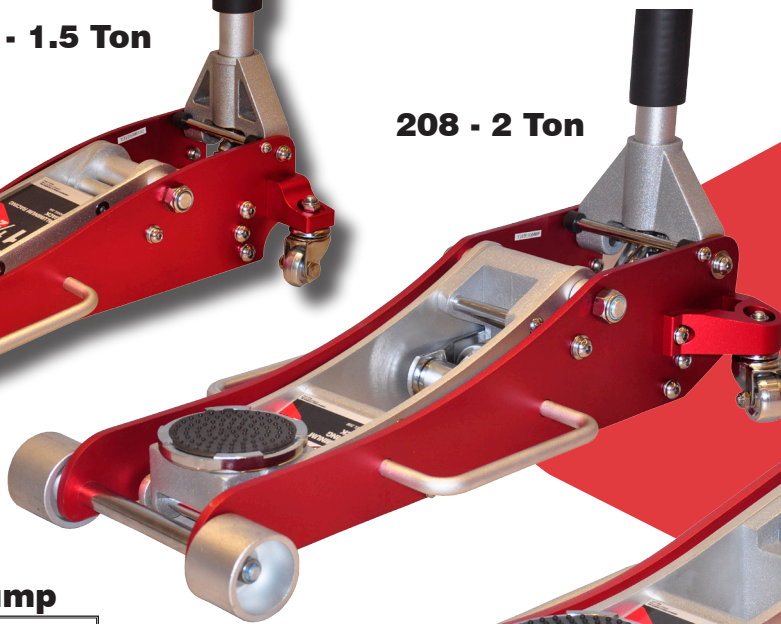
Models 206, 208, 210

AFF's "1 - 2 - 3 - PUNCH" rounds out our Automotive Floor Jack lineup with a complete line of Aluminum Service Jacks - Lightweight, Rugged and Super Fast all three of these new models comes with a Double Pump Plunger design to get the car in the air and the job done quickly.

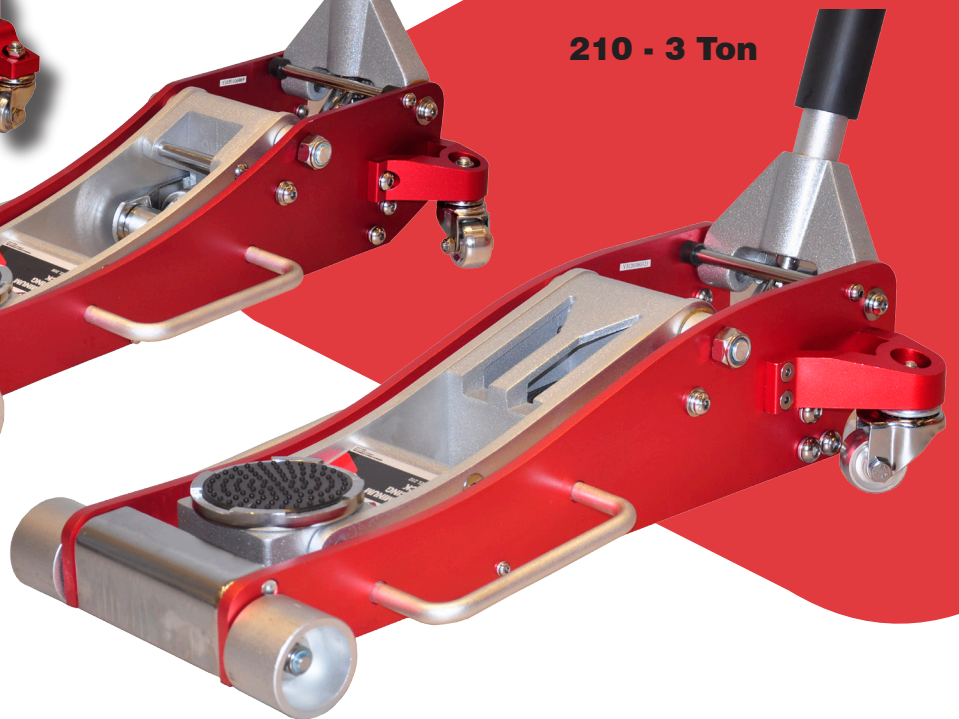
206 - 1.5 Ton



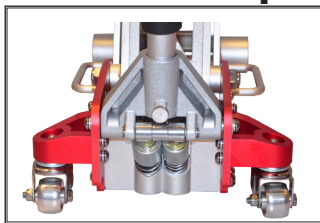
208 - 2 Ton



210 - 3 Ton



Double Pump



SPECIFICATIONS

Model 206 - 1.5 Ton Aluminum Racing Jack

- Double Pump Design
- Padded 2 Pc. Handle
- Padded Saddle
- Side Handle
- Front Roller

Low Height 3.25"
 High Height 15"
 Length 20.75"
 Width (widest) 10"
 Net Weight 26 lbs.
 Gross Weight 30 lbs.

Model 208 - 2 Ton Aluminum Racing Jack

- Double Pump Design
- Padded 2 Pc. Handle
- Padded Saddle
- 2 Side Handles
- Front Wheels

Low Height 3.5"
 High Height 18.5"
 Length 25.75"
 Width (widest) 11.75"
 Net Weight 43 lbs.
 Gross Weight 46 lbs.

Model 210 - 3 Ton Aluminum Racing Jack

- Double Pump Design
- Padded 2 Pc. Handle
- Padded Saddle
- 2 Side Handles
- Front Wheels

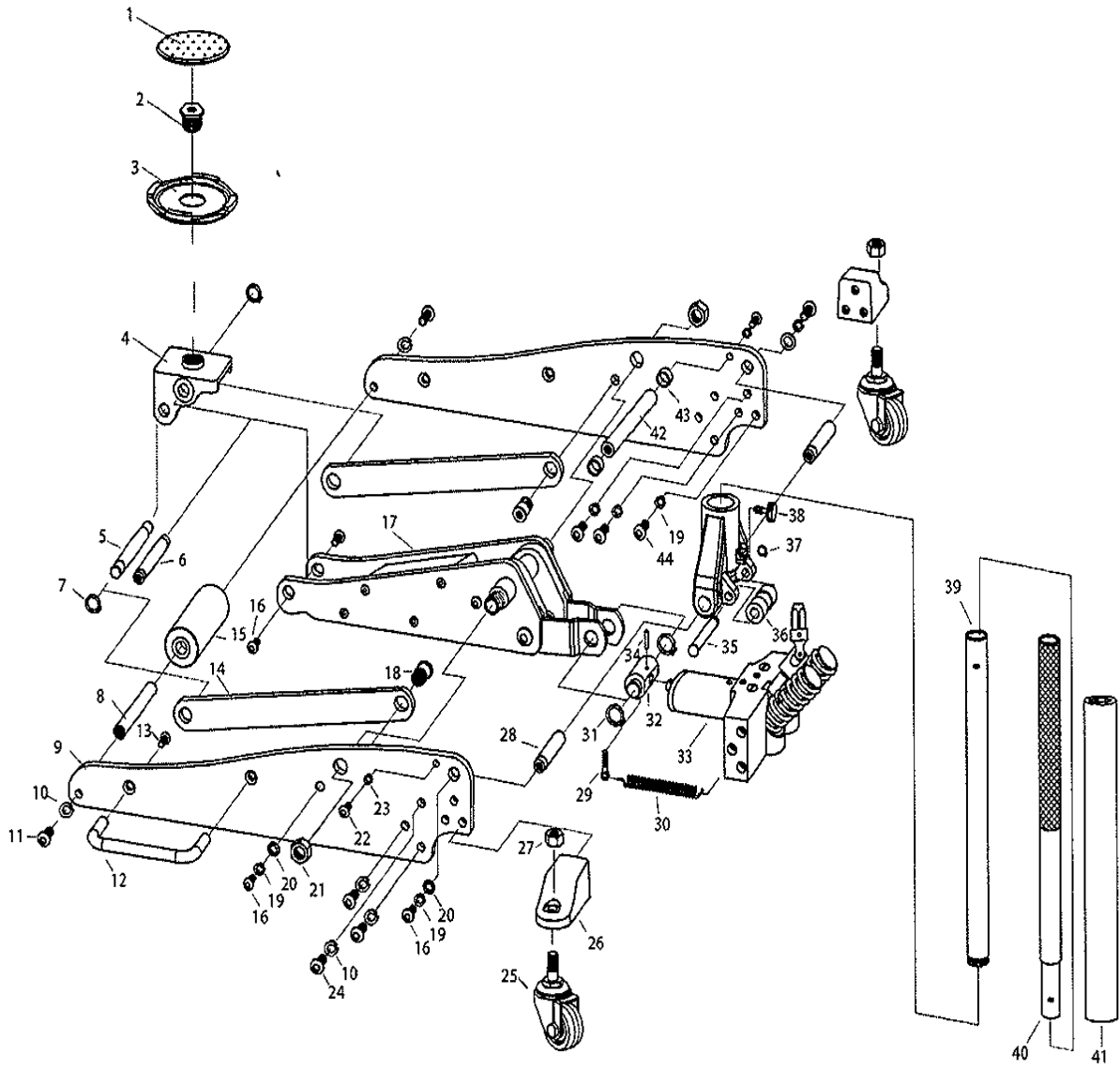
Low Height 3.75"
 High Height 19.3"
 Length 26"
 Width (widest) 14"
 Net Weight 55 lbs.
 Gross Weight 58 lbs.

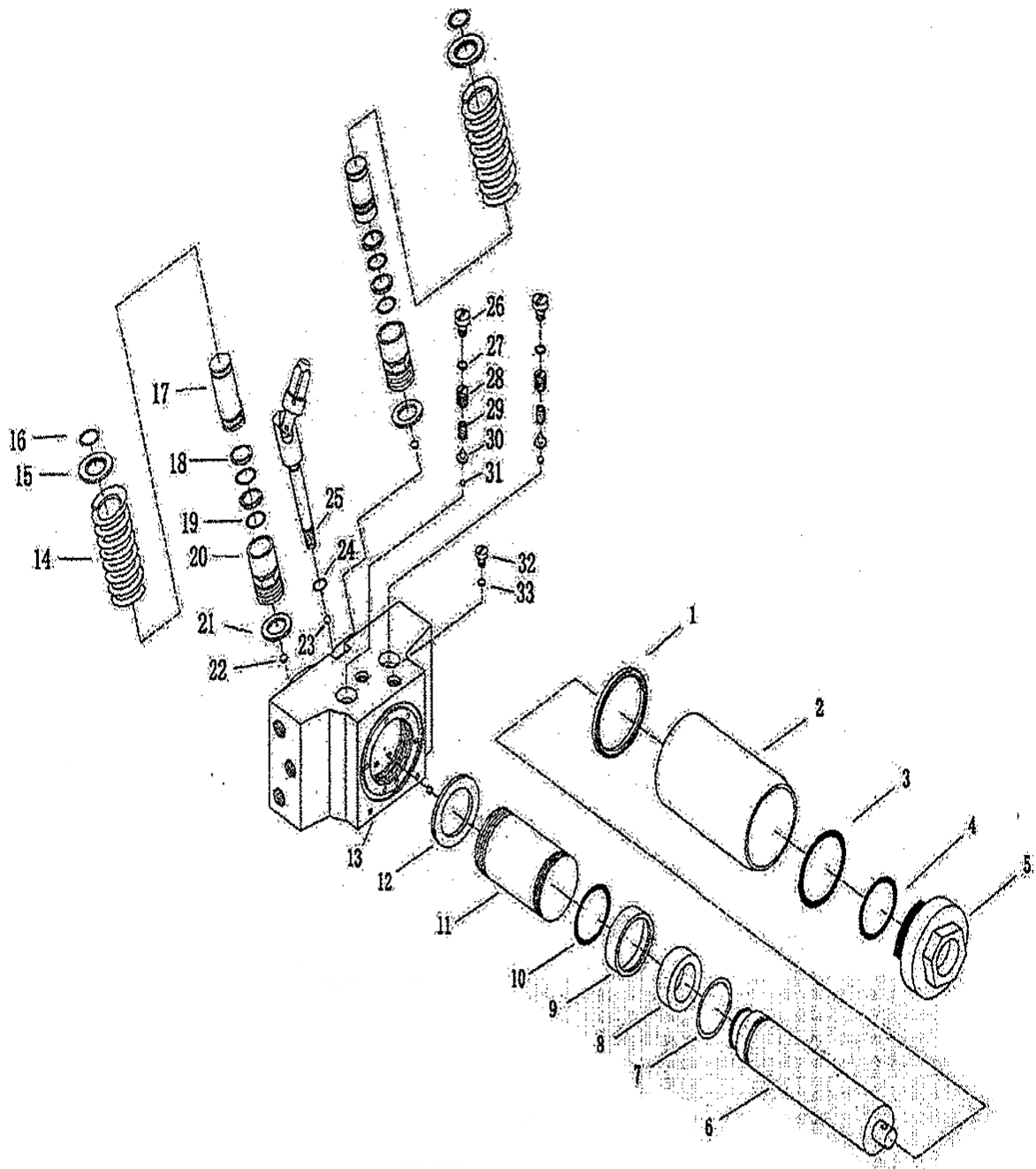


MODEL 206 1.5 TON COMPACT RACING JACK

PART			KIT INCLUDES	
ORDER NUMBER	KIT DESCRIPTION	REF. #	DESCRIPTION	
206-8	FRONT WHEEL AXLE KIT			
		8	FRONT WHEEL AXLE	
		10	WASHER QTY 2	
		11	SCREW QTY 2	
206-15	FRONT WHEEL	15	WHEEL	
206-3	SADDLE	3	SADDLE	
206-1	SADDLE PAD	1	SADDLE PAD	
206-YOKE	HANDLE YOKE COMPLETE		YOKE	
		28	HANDLE YOKE SHAFT QTY 2	
		36	YOKE ROLLER	
		35	YOKE ROLLER SHAFT	
		38	SET SCREW	
206-38	SET SCREW	38	SET SCREW	
206-25	REAR CASTER	25	REAR CASTER	
206-32	POWER UNIT ADAPTER	32	POWER UNIT ADAPTER	
206-33	HYDRAULIC UNIT	33	HYDRAULIC UNIT	
206-39	HANDLE ASSM.	39	LOWER HANDLE	
		40	UPPER HANDLE	
206-41	HANDLE BUMPER	41	HANDLE BUMPER	

206-17	PRESSURE PUMP KIT	17		
		14	SPRING	
		15	SPRING BASE	
		16	RETAINING RING	
		17	PISTON	
		18	RETANING RING QTY 2	
		19	O-RING 0.2X2.65 QTY2	
		20	PISTON HOUSE	
		21	SEALING RING	
		22	STEEL BALL 5	
206-UJOINT	U-JOINT RELEASE W/ORING	25	U-JOINT	
		24	O-RING	
206-KRK	REPAIR KIT	1	SEALING RING	
		3	SEALING RING	
		4	O-RING 24.5X3.55	
		7	RETAINING RING	
		9	WASHER	
		10	O-RING 20.5X4.6	
		12	SEALING WASHER	
		16	RETAINING RING QTY 2	
		18	RETAINING RING QTY4	
		19	O-RING 0.2X2.65 QTY 4	
		22	STEEL BALL 5 QTY 3	
		23	STEEL BALL 6	
		24	O-RING 6.8X1.8	
		27	SQUARE SEAL 15X9.5X2 QTY 2	
		29	SAFETY VAVLE SPRING QTY 2	
		30	SPRING SEAT QTY 2	
		31	STEEL BALL 4 QTY 3	
		33	SQUARE SEAL 10X6.2X1.5 QTY 2	
206-26	REAR CASTER BASE	26	REAR CASTER BASE.	





Rely on premium car jacks made by AFF if you're looking for quality and efficiency.