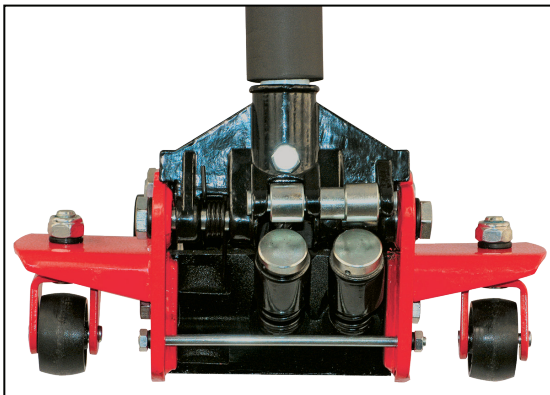




AMERICANFORGE&FOUNDRY™

PROFESSIONAL HEAVY DUTY FLOOR JACKS

- ✓ Heavy gauge steel construction
- ✓ Twin hydraulic system for maximum speed
- ✓ Universal joint technology provides smooth descent
- ✓ Flanged side plates for increased strength and stability
- ✓ Constructed with safety valve to prevent overloading
- ✓ Pinned and padded saddle for extra vehicle protection
- ✓ Tough powder coated frame for long shop life



Double Pump For Maximum Speed
(included on all models)



2 PC Handle For Easy Shipping



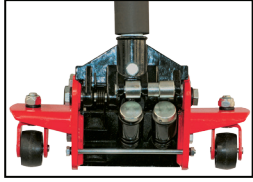
MODEL 350SS

MODEL	CAPACITY	HANDLE	LOW HEIGHT	HIGH HEIGHT	CHASSIS LENGTH	OVERALL WIDTH (FRONT)	OVERALL WIDTH (REAR)	SHIP WEIGHT
200T	2 ton	1 pc	2.75"	20.00"	27.00"	11.74"	15.00"	99 lbs
202T	2 ton	2 pc	2.75"	20.00"	27.00"	11.74"	15.00"	104 lbs
320SS	2.5 ton	1 pc	5.00"	21.00"	28.50"	9.00"	13.50"	101 lbs
322SS	2.5 ton	2 pc	5.00"	21.00"	28.50"	9.00"	13.50"	106 lbs
300T	3 ton	1 pc	3.75"	21.50"	30.75"	11.38"	14.50"	104 lbs
302T	3 ton	2 pc	3.75"	21.50"	30.75"	11.38"	14.50"	109 lbs
350SS	3.5 ton	1 pc	4.00"	19.50"	29.00"	11.25"	15.00"	119 lbs
352SS	3.5 ton	2 pc	4.00"	19.50"	29.00"	11.25"	15.00"	124 lbs

Loaded With Power....Built With Precision

ONE PIECE HANDLES

2 TON LOW PROFILE FLOOR JACK MODEL 200T



2 TON LOW PROFILE FLOOR JACK w/2 PC HANDLE MODEL 202T

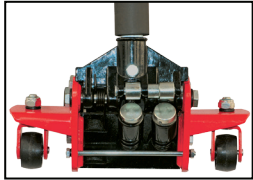


**HOT
NEW PRODUCT!**



2.5 TON PROFESSIONAL HEAVY DUTY FLOOR JACK MODEL 320SS

**HOT
NEW PRODUCT!**



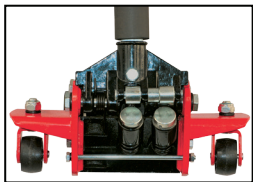
2.5 TON PROFESSIONAL HEAVY DUTY FLOOR JACK w/2 PC HANDLE MODEL 322SS



**HOT
NEW PRODUCT!**



3 TON PROFESSIONAL HEAVY DUTY FLOOR JACK MODEL 300T



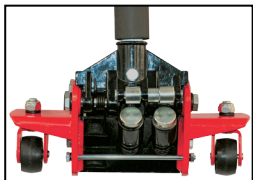
3 TON PROFESSIONAL HEAVY DUTY FLOOR JACK w/2 PC HANDLE MODEL 302T



**HOT
NEW PRODUCT!**



3.5 TON PROFESSIONAL HEAVY DUTY FLOOR JACK MODEL 350SS



3.5 TON PROFESSIONAL HEAVY DUTY FLOOR JACK w/2 PC HANDLE MODEL 352SS



**HOT
NEW PRODUCT!**





AMERICANFORGE&FOUNDRY™

202T OPERATING MANUAL

2 Ton Low Profile Floor Jack

OPERATING INSTRUCTIONS

Important:

Sometimes during shipment and handling air will get into the hydraulic system which can result in poor lifting performance.

Air Purge:

To purge any air from the system fully open the release valve by turning handle counter clockwise 1 1/2 to 2 turns. Then while holding the saddle down operate the pump handle approximately 12 times.

Release pressure on saddle and continue to pump while closing release valve. Raise unloaded jack to maximum height and release. Jack will return to lowered position and will be ready for operation.

Checking Oil Level:

Remove inspection plate and remove rubber fill plug located on the side of the round cylinder (this is painted over during assembly.) Lift jack so the cylinder is in the vertical position with the casters up and the front wheels down. Proper oil level should be even with the bottom of the fill hole. If low return jack to normal position and fill with NEW clean hydraulic jack oil and recheck level. Use caution not to overfill.

To Raise Jack:

1. Turn the operating handle clockwise until the release valve closes. Use caution not to overtighten.
2. Place the jack directly under the object to be lifted so that the saddle makes contact with load.
3. Raise jack to required height. After lifting use safety stands to hold load.

To Lower Jack:

1. Slowly turn the operating handle counter-clockwise. The speed of lowering is controlled by the amount the valve is opened.

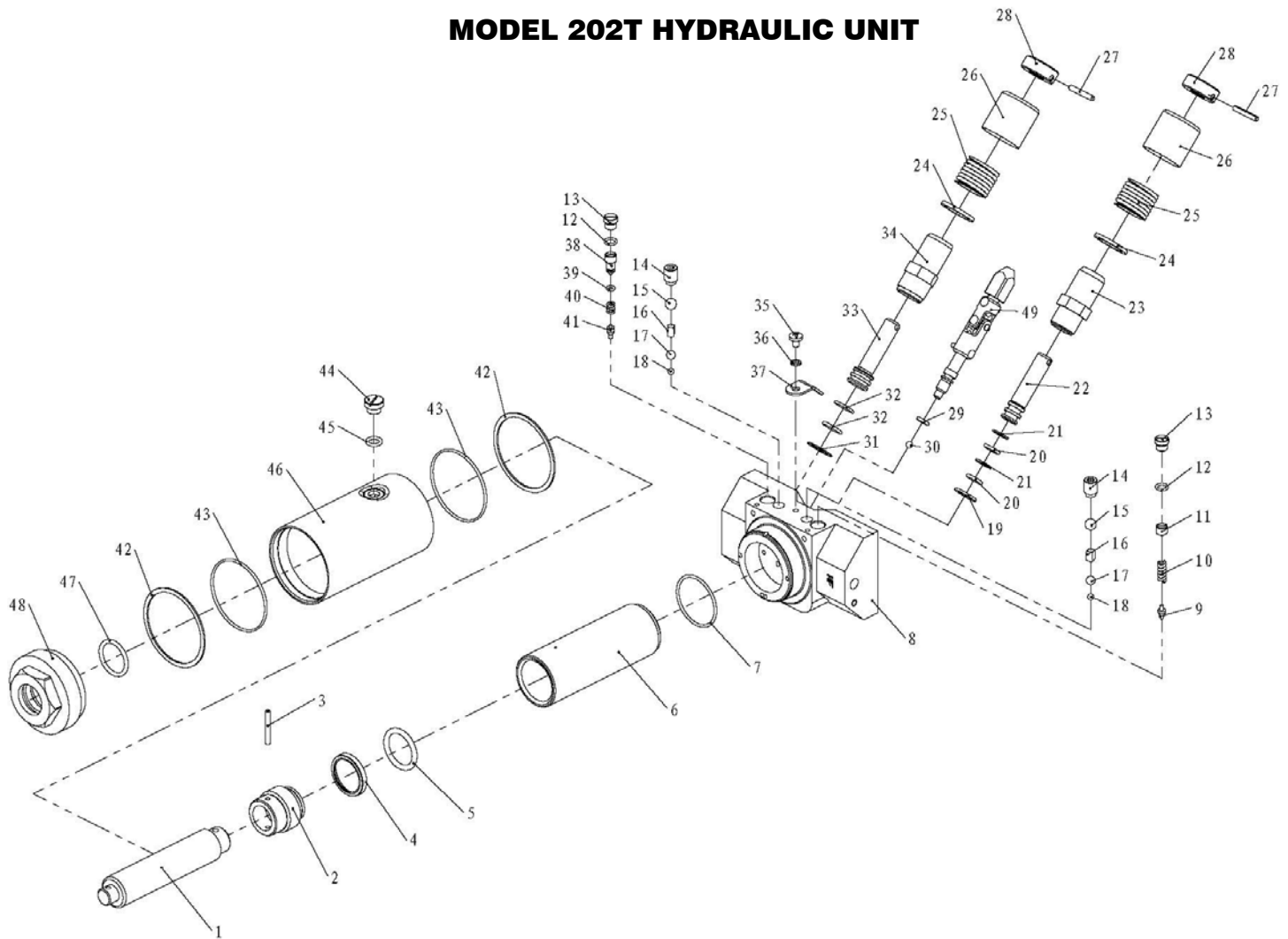
Normal Maintenance Procedures:

Use only high quality hydraulic oil. Use of any other oil may result in damage. When filling with hydraulic oil do not permit dirt or any other substance to enter the hydraulic system. Inspect the jack regularly for leaks, damaged, loose, or missing parts. Remove from use and have unit repaired if necessary. Always store jack in the fully lowered position.

CAUTION

- 1) Understand and follow all instructions before operating unit.
- 2) This jack is for lifting purposes only. Use jack stands of the correct rated capacity for support.
- 3) Use only on a hard level surface.
- 4) Do not exceed rated capacity.
- 5) Center load should be placed directly on saddle.
- 6) No alterations should be made to this product.
- 7) Do not move vehicle while jack is in use.
- 8) Lift only areas of the vehicle as specified by the vehicle manufacturer.
- 9) Failure to heed these warnings may result in personal injury and/or property damage.

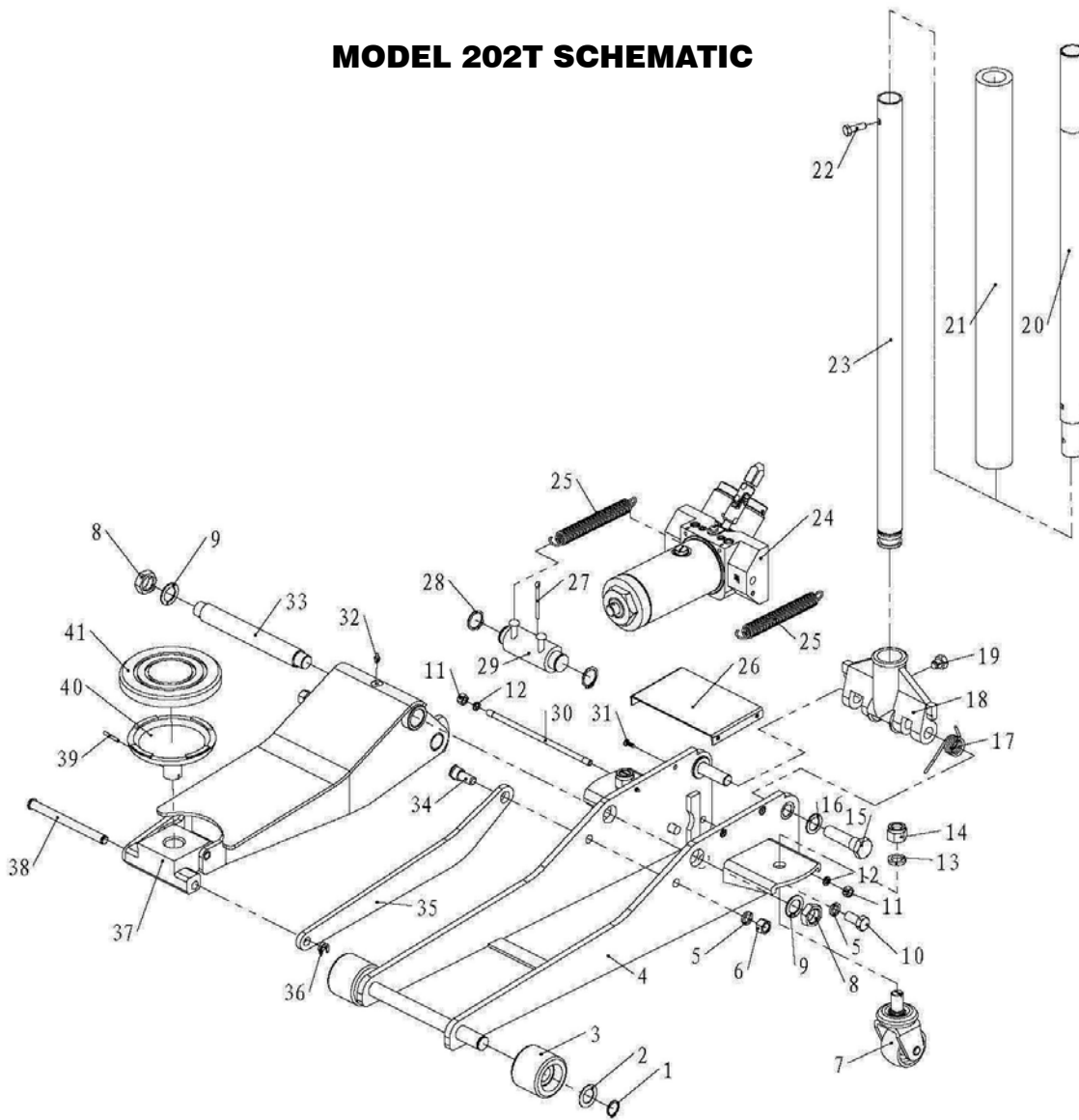
MODEL 202T HYDRAULIC UNIT



PARTS LIST

NO.	DESCRIPTION	QTY	NO.	DESCRIPTION	QTY	NO.	DESCRIPTION	QTY
1	Ram	1	18	Ball	2	35	Screw	1
2	Ram header	1	19	Washer	1	36	Spring washer	1
3	Pin 4x35	1	20	O-ring	2	37	Locker	1
4	O-ring returner	1	21	Sealing washer	2	38	Regulate bolt	1
5	O-ring	1	22	Pump core	1	39	O-ring	1
6	Cylinder	1	23	Pump case	1	40	Relief valve spring	1
7	O-ring	1	24	Pump inner case	2	41	Safety valve	1
8	Valve base	1	25	Press spring	2	42	Washer	2
9	Safety valve	1	26	Pump outer case	2	43	O-ring	2
10	Relief valve spring	1	27	Pin 4x30	2	44	Seal bolt	1
11	Regulate bolt	1	28	Pump cover	2	45	O-ring	1
12	O-ring	2	29	O-ring	1	46	Cylinder outer case	1
13	Seal bolt	2	30	Ball	1	47	O-ring	1
14	High_pressure bolt	2	31	Washer	1	48	Tank nut	1
15	Ball	2	32	O-ring	2	49	Release assembly	1
16	Separator	2	33	Pump core	1			
17	Ball	2	34	Pump case	1			

MODEL 202T SCHEMATIC



PARTS LIST

NO.	DESCRIPTION	QTY	NO.	DESCRIPTION	QTY
1	RETAINING RING	2	22	SCREW M8x25	1
2	WASHER	2	23	HANDLE LOWER	1
3	WHEEL	2	24	POWER UNIT ASSY	1
4	SIDE PLATE ASSY	1	25	SPRING	2
5	SPRING WASHER 12	4	26	INSPECTION PLATE	1
6	NUT M12	2	27	SPLIT PIN 4x45	1
7	CASTER ASSEMBLY	2	28	RETAINING RING	2
8	NUT M20	2	29	BLOCK LINKAGE	1
9	SPRING WASHER 20	2	30	PULL ROD	1
10	BOLT M12x25	2	31	SCREWS	4
11	NUT M8	2	32	GREASE FITTING	1
12	SPRING WASHER 8	2	33	SHAFT ARM	1
13	SPRING WASHER 16	2	34	BOLT	2
14	NUT M16	2	35	LONG LINGKAGE	2
15	BOLT	2	36	RETAINING RING	1
16	SPRING WASHER 18	2	37	LIFT ARM ASSEMBLY	1
17	TORSION SPRING	1	38	LINKAGE AXLE	1
18	HANDLE SOCKET	1	39	PIN 3.5 x 30	1
19	BOLT	1	40	SADDLE	1
20	HANDLE UPPER	1	41	RUBBER SADDLE PAD	1
21	HANDLE BUMPER	1			

Rely on premium car jacks made by AFF if you're looking for quality and efficiency.