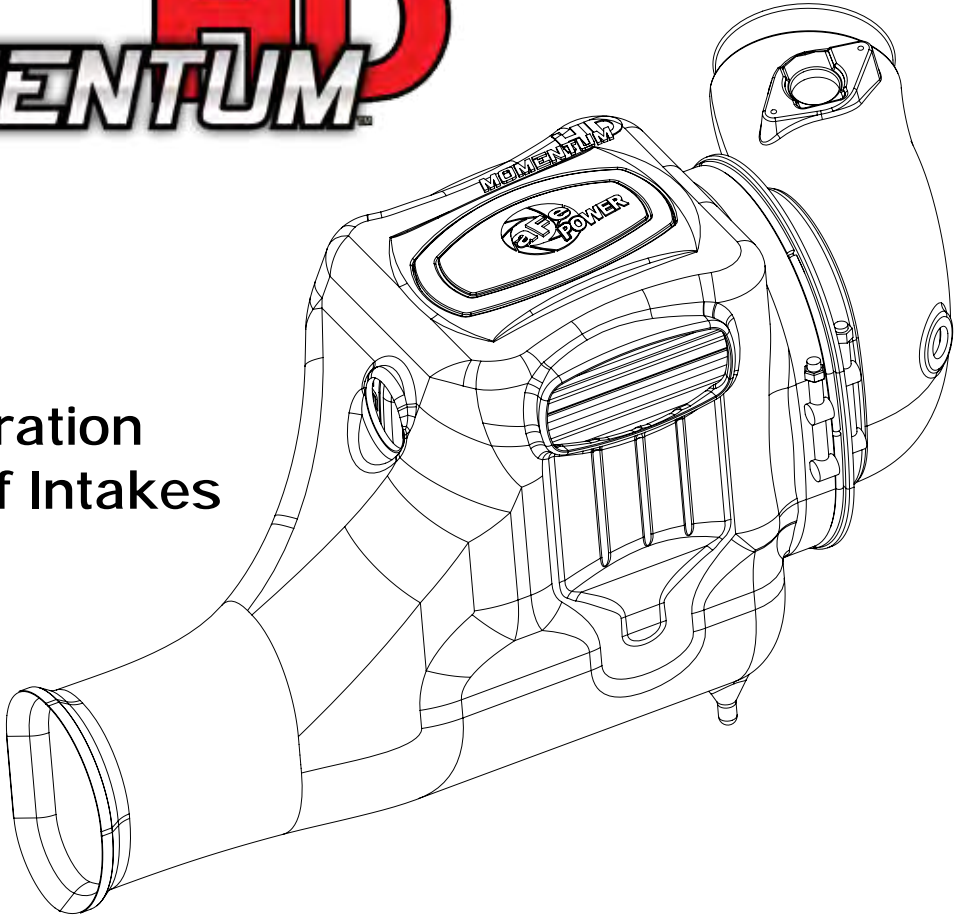




**HD**  
**MOMENTUM**



The Next  
Generation  
of Intakes

**advanced FLOW engineering**

**Instruction Manual** P/N: 50-73003/51-73003/75-73003

Make: **FORD** Model: **F-250/350/450/550 & Excursion** Year: **03-07** Engine: **V8-6.0L (td)**



- Please read the entire instruction manual before proceeding.
- Ensure all components listed are present.
- Ensure you have all necessary tools before proceeding.
- Do not attempt to work on your vehicle when the engine is hot.
- Disconnect the negative battery terminal before proceeding.
- Retain factory parts for future use.

Label	Qty.	Description	Part Number
A	1	Housing	05-73003B2
B	1	T-Bolt Clamp	03-50267
C	1	Air Filter	20-91061 (Pro 10R) 21-(PDS) 72-(PG7)
D	1	Tube	05-73003B1
E	1	Plug	05-01202
F	1	T20 Torx Bit	03-50066

Installation will require the following tools:  
8mm Nut driver, 10mm Nut driver, Torx (T-20) driver and Pliers

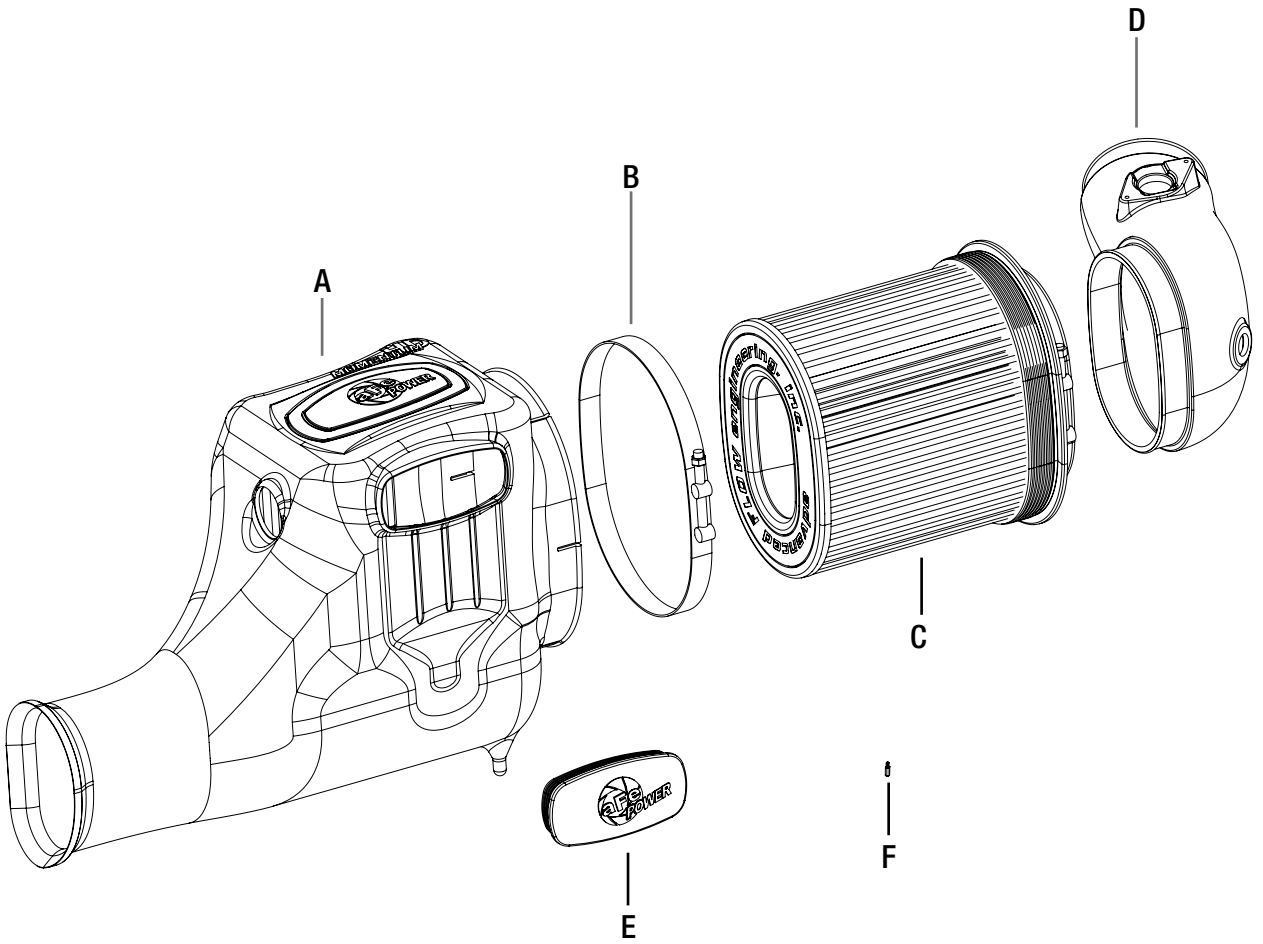




Figure A

**Refer to Figure A for step 1**

Step 1: Remove the two hoses shown in the picture by compressing the spring clamps and pulling the hoses off.



**Refer to Figure B for steps 2-4**

Step 2: Disconnect the MAF sensor plug.

Step 3: Remove the filter minder from the factory intake tube.

Step 4: Loosen clamp for intake tube.



**Refer to Figure C for step 5**

Step 5: Pull straight up to remove the OE intake.

REMOVAL



Figure D

**Refer to Figure D for step 6**

Step 6: Remove the OE grommet and MAF sensor from the factory intake.



Figure E

**Refer to Figure E for step 7**

Step 7: Install the OE grommet into the new aFe intake tube, and insert the MAF sensor as shown and secure it using the OE screws.





Figure F

**Refer to Figure F for steps 8-9**

Step 8: Install the aFe filter into the new housing.

Step 9: Place the large clamp on the housing as shown but leave both clamps loose.



Figure G

**Refer to Figure G for step 10**

Step 10: First install the aFe intake tube and push it towards the firewall.

INSTALL



Figure H

**Refer to Figure H for steps 11-12**

Step 11: Next drop in the housing and line up the pegs with the mounting holes.

Step 12: Make sure the filter clamp is loose and then push the aFe intake tube into the filter.



Figure I

**Refer to Figure I for steps 13-14**

Step 13: Install the filter minder and connect MAF sensor.

Step 14: Tighten all clamps.



Figure J

**Refer to Figure J for steps 15-18**

Step 15: Replace the coolant hose and clamp in place.

Step 16: Install the factory breather hose by sliding it into the hole on the front of the housing.

Step 17:(Optional) install plug on side of housing.

Step 18: Installation is now Complete.