



takeda by aFe

Installation

Kit P/N:
TA-1012P

Make:
Honda

Model: Civic **Year:** '06-'10 **Engine:** L4-1.8L

Parts Identification:

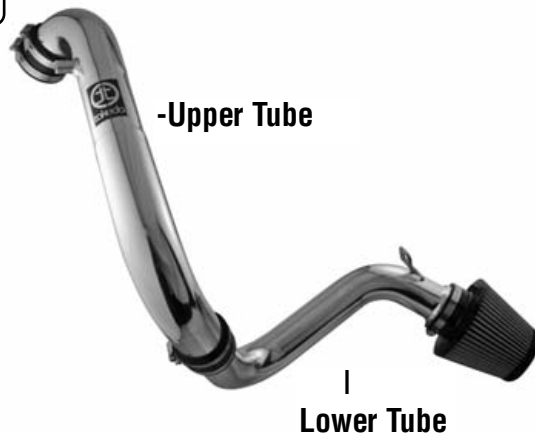
- 1 Air filter (*Pro Dry 5™* TF-9011D)
- 1 Upper intake tube, polished 05-T1012P1
- 1 Lower intake tube, polished 05-T1012P2
- 2 Coupling, straight 05-00570
- 4 Clamp #044
- 1 Isolation mount
- 1 5/16" hose @ 16.5"L
- 1 5/8" hose @ 6.5"L
- 1 7/16" trim seal @ 7"L
- 2 Screw M4
- 1 Flat washer M6
- 1 Nut M6
- 1 Pre-Filter

Tools Required:

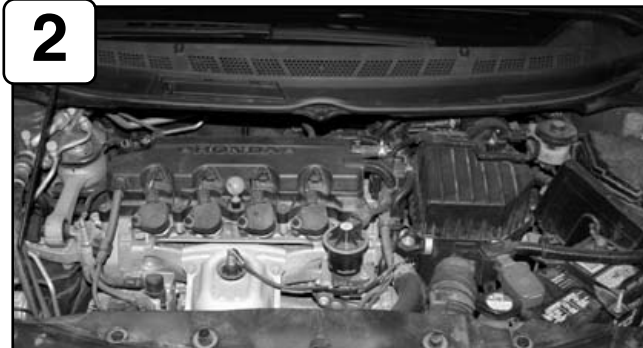
- 10mm socket or wrench
- Ratchet w/ extension
- Phillips screw driver
- Flat head screw driver
- 5/16" nut driver
- 4mm allen key
- Pliers

Note: Read instructions before installation and have tools ready.

1



2



Complete stock intake. Please disconnect battery terminals before installation. Be sure to have your radio security code (if applicable) in order to access your previous settings. Remove the battery and battery tray before install.

3



Unplug the MAF sensor harness.

4



Disconnect all retainer clips and remove the upper intake box.

5



Using 10mm socket or wrench, remove the lower intake box's mounting bolt.

6



Using a 10mm socket or wrench, remove the mounting bolt on the back of the lower intake box.

7



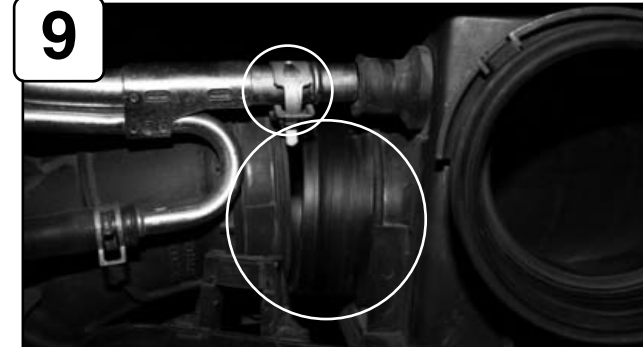
With a 10mm socket or wrench remove both bolts securing the ram air duct to the vehicle

8



Pull the ram air duct tube off of the lower intake box.

9



Loosen the clamp holding the lower intake box to the intake tube, then with pliers remove the pressure clamp holding the crank case breather line.



takeda by aFe

Accessories



Replacement Filter P/N:
TF-9011D



Pre Filter P/N:
TP-7011B

Note: Filter Cleaning: When cleaning your **Pro Dry S™** filter, be sure to use only "Restore Kit" (Takeda P/N: TP-7016C **Pro Dry S™** cleaner only.)

Pro Dry S™ cleaning:
see cleaning instruction sheet TF-9000I.



10 Remove the lower intake box from the vehicle.



11 Disconnect the clamp holding the intake tube to the throttle body and pull the wire loom off of the tube and put aside.



12 With pliers, remove the pressure clamp holding the crank case breather line to the valve cover and pull it off.



13 When the engine has cooled completely, remove the radiator cap to relieve pressure then with pliers remove both pressure clamps securing the stock coolant line to the engine (circled in white). Make sure to have a rag handy to catch the small amount of coolant left in the line.



14 Replace the existing OEM hose line with the new hose line re-using your existing clamps.



15 Remove the front bumper. Start with removing all the push clips holding the upper splash guard onto the vehicle. When all are removed, gently pull the splash guard off of the hood latch and put it aside.



16 Remove both bolts holding the top of the bumper to the radiator support. (Passenger side and driver side)



17 Remove both screws holding the bumper to the fenders. (Passenger and driver side)



18 From underneath the vehicle, remove all the push clips holding the lower portion of the bumper to the splash shields.



takeda by aFe

Accessories



Replacement Filter P/N:
TF-9011D



Pre Filter P/N:
TP-7011B

Note: Filter Cleaning: When cleaning your **Pro Dry S™** filter, be sure to use only "Restore Kit" (Takeda P/N: TP-7016C **Pro Dry S™** cleaner only.)

Pro Dry S™ cleaning:
see cleaning instruction sheet TF-90001.

19



Gently pop loose one side at a time of the bumper until it is completely off and put it aside. (It is helpful to have a second person for this step)

20



Remove both bolts from the driver side lower ram air ducts.

21



Remove both the upper ram air duct tube and lower ram air duct tube and put the aside.

22



Install the supplied seal trim onto the lower metal edge of the driver side frame. (This prevents scratching the intake tube)

23



Install the isolation mount in the threaded hole that is located right above where the seal trim was installed.

24



Feed the lower intake tube between the splash shield and frame until the tube mount lines up with the isolation mount.

25



Install the flat washer and the hex bolt to secure the intake tube to the vehicle. Do not fully tighten.

26



Remove the MAF air sensor from the OEM air intake box.

27



Install the MAF air sensor into the Takeda upper intake tube. The sensor will only fit one way.



takeda by aFe

Accessories



Replacement Filter P/N:
TF-9011D



Pre Filter P/N:
TP-7011B

Note: Filter Cleaning: When cleaning your **Pro Dry S™** filter, be sure to use only "Restore Kit" (Takeda P/N: TP-7016C **Pro Dry S™** cleaner only.)

Pro Dry S™ cleaning:
see cleaning instruction sheet TF-90001.

28



Install the coupling and clamps onto the throttle body and tighten the lower clamp. Do not overtighten.

29



Place the Takeda upper intake tube into the coupling and position it to align with the lower tube.

30



Once both intake tubes are aligned, tighten the throttle body coupling clamp and the intake tubes coupling clamps.

31



If desired, disconnect the plastic wiring loom cover and put aside.

32



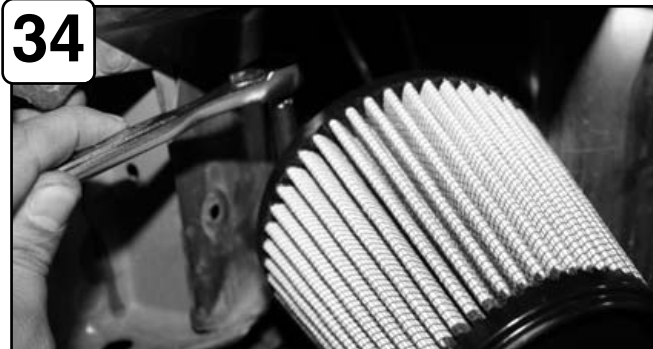
Now that everything is aligned tighten the lower intake tube mount.

33



Install the Takeda air filter onto the intake tube. Do not push filter past the bumpstop inside the filter.

34



Tighten the clamp using a 5/16" socket or wrench and attach the pre-filter if desired. Do not over tighten.

35



Using the supplied hose, connect the crank case breather to the intake tube. When done, reinstall the front bumper and battery. (Use steps 19-15 for help reinstalling)

36



The installation of your Takeda performance intake is now complete. Please check all components and re-tighten if necessary. **Thank you for choosing Takeda!**