

advanced FLOW engineering Magnum FORCE Stage-2 Air Intake
Instruction Manual P/N: 51-82952-B / 54-82952-B / 51-82952-C / 54-82952-C

Make: **BMW** Model: **M3 (E90/E91/E92)** Year: **2008-2013** Engine: **V8-4.0L**



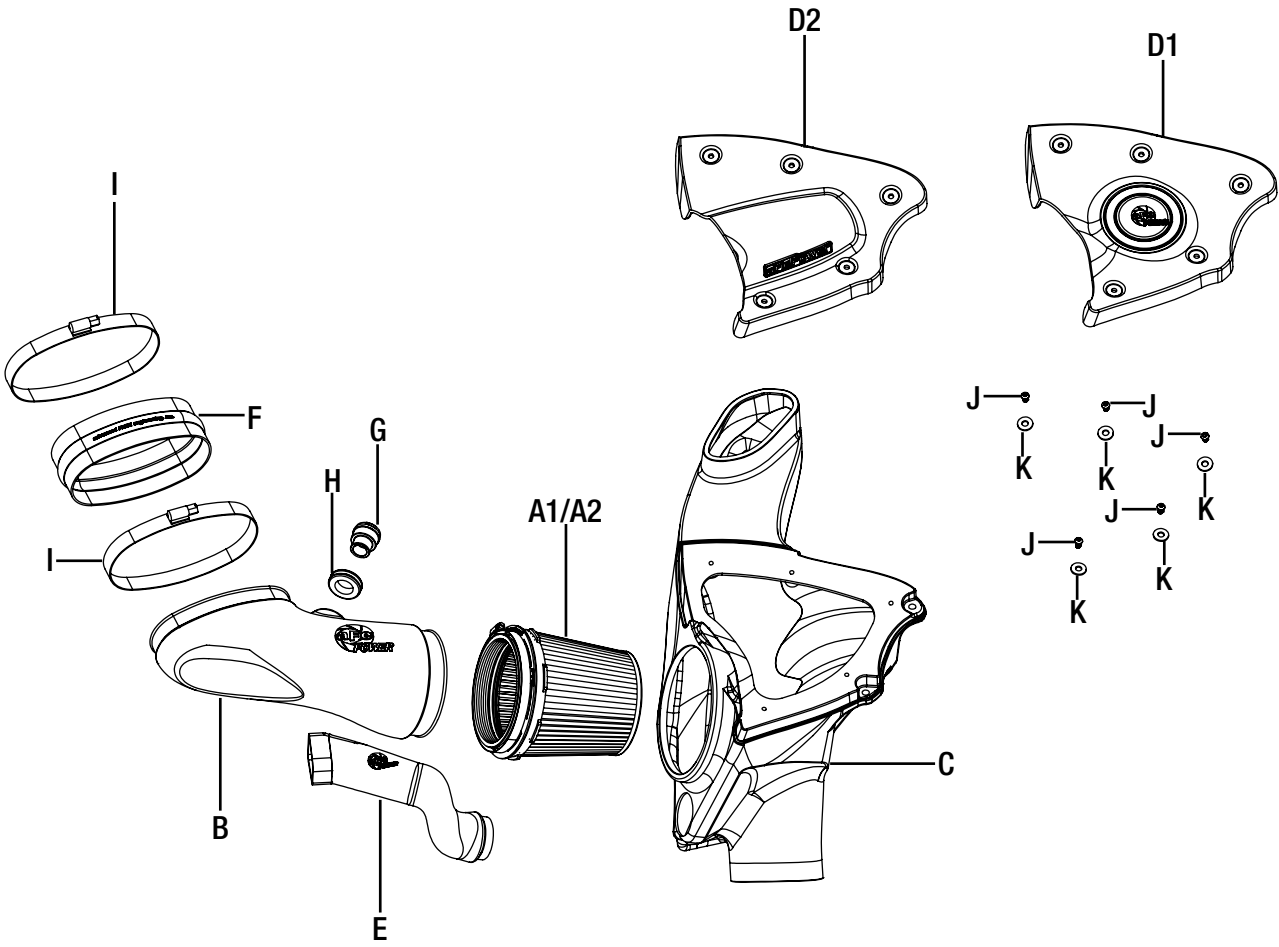
- Please read the entire instruction manual before proceeding.
- Ensure all components listed are present.
- Ensure you have all necessary tools before proceeding.
- Do not attempt to work on your vehicle when the engine is hot.
- Disconnect the negative battery terminal before proceeding.

Retain factory parts for future use.

Label	Qty.	Description	Part Number
A1	1	Air Filter (Pro DRY S)	21-91093
A2	1	Air Filter (Pro 5R)	24-91093
B	1	Tube	05-82952B1
C	1	Housing	05-82952B2
D1	1	Cover, Black	05-82952B3
D2	1	Cover, Carbon Fiber Finish	05-82952C3
E	1	Air Duct	05-82952B4
F	1	Coupling, Silicone Hump	05-01262
G	1	Fitting, Smog Pump	05-01096
H	1	Grommet	03-50139
I	2	Clamp, #104	03-50051
J	5	Screw, Btn Hd: M6	03-50102
K	5	Washer, Flat: M6	03-50070

Installation will require the following tools:

Flat head screwdriver, 8mm nut driver, 10mm nut driver, 4mm hex key.



**Figure A****Refer to Figure A for Steps 1-4.**

- Step 1: Loosen the clamp at the intake manifold. ①
- Step 2: Disconnect the smog pump hose from the OE intake tube. ②
- Step 3: Remove the two 10 mm bolts on the OE airbox, and keep the bolts for later use. ③
- Step 4: Carefully, remove the OE intake tube, airbox, and scoop from the vehicle.



Figure B

Refer to Figure B for Steps 5-7.

Step 5: Install the supplied rubber grommet and smog adaptor into the aFe intake tube. ④

Step 6: Install the tube into the aFe air filter and tighten the clamp. ⑤

Step 7: Slip the supplied coupler over the aFe tube. ⑥

NOTE: For an easier install, slide the coupler as far over the tube as possible.



Refer to Figure C for Step 8.

Step 8: Insert the aFe filter and tube assembly into the aFe airbox.



Refer to Figure D for Step 9.

Step 9: Carefully, guide the intake assembly into the engine bay.

NOTE: It may help to install the coupling and tube over the intake manifold without the supplied clamps first.



Figure E

Refer to Figure E for Step 10.

Step 10: Install the supplied aFe air duct. Slip the square end into the OE air duct first, then slip the round end of the air duct into the aFe airbox. ⑦

**Figure F****Refer to Figure F for Steps 11-13.**

Step 11: Adjust the aFe intake tube and airbox to sit comfortably, then install the two clamps at the intake manifold. ⑧

Step 12: Connect the smog pump hose to the aFe tube. ⑨

Step 13: Install the two 10 mm OE bolts from Step 3, to secure the aFe airbox in place. ⑩

**Figure G****Refer to Figure G for Step 14.**

Step 14: Install the aFe cover using the supplied M6 screws and washers. Your installation is now complete. Thank you for choosing aFe POWER!

NOTE: Place enclosed CARB EO sticker on a clean/smooth surface on or near the intake system. EO identification label is required in passing the smog check inspection.

NOTE: Check all bolts, clamps, and connectors after 100-200 miles.



Pro DRY S Air Filter



P/N: 21-91093

Pro 5R Air Filter



P/N: 24-91093

Pro DRY S Restore Kit



P/N: 90-59999

Blue Squeeze Restore Kit



P/N: 90-50501

SPRINT BOOSTER V3



P/N: 77-16302

Mid-Pipe Exhaust



P/N: 49-36321 (w/ Reso.)
49-36316 (w/o Reso.)

(Coupe) Axle-Back Exhaust



P/N: 49-36312-C (C/F Tips)
49-36312-P (Pol. Tips)

(Sedan) Axle-Back Exhaust



P/N: 49-36311-C (C/F Tips)
49-36311-P (Pol. Tips)

Pulley



P/N: 79-10001

Dynamic Air Scoops



P/N: 54-11478 (Blk.)
54-11478-R (Red)

aFe POWER T-Shirt



P/N: 40-30442-B (M)
40-30443-B (L)

Discover other performance air intake systems on our website.