

**advanced FLOW engineering** Magnum FORCE Stage-2 Cold Air Intake System

**Instruction Manual** P/N: 54-13049D / 54-13049R

Make: Volkswagen

Model: Jetta

Year: 2019-2020

Engine: L4-1.4L (t)



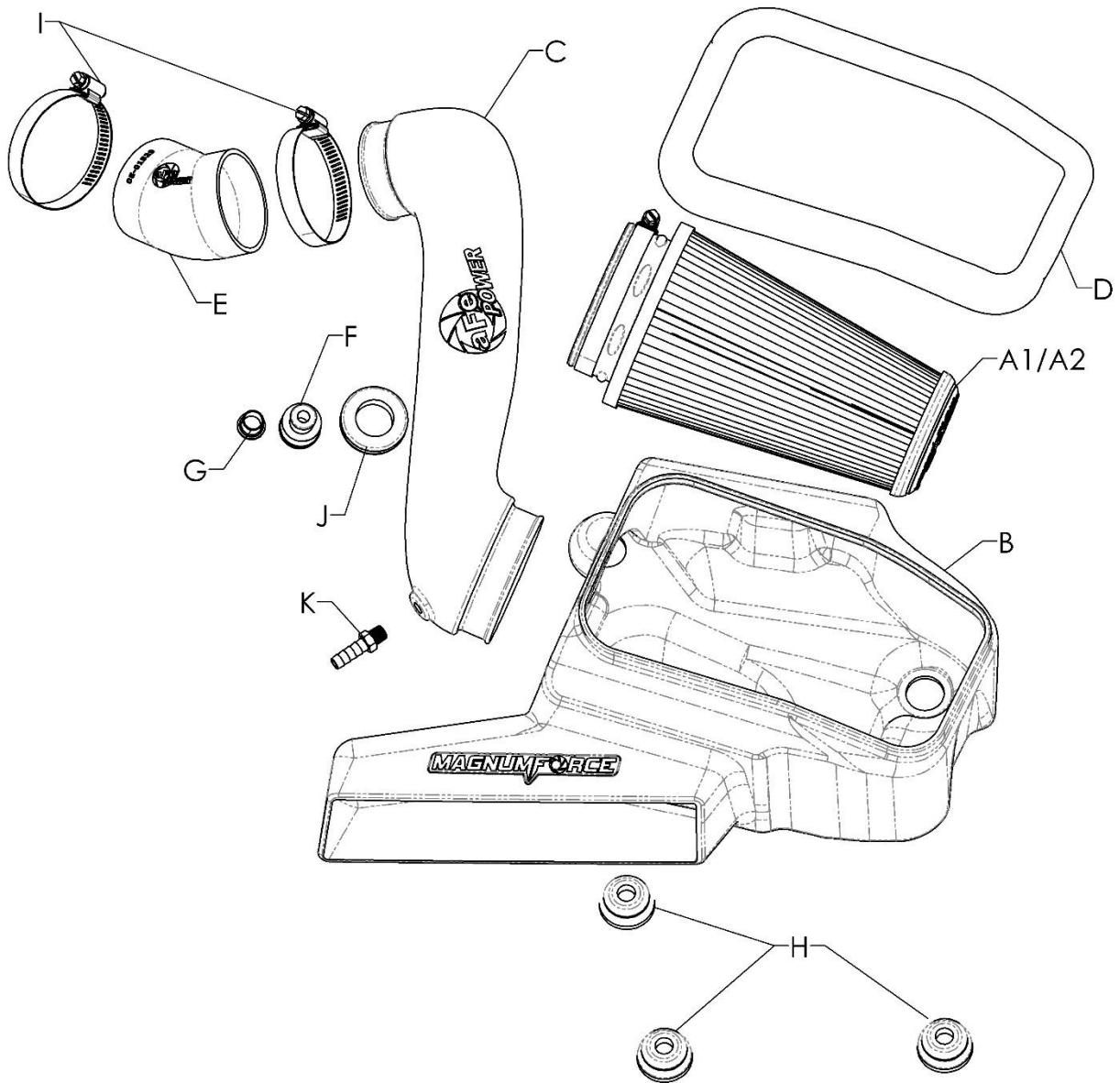
- Please read the entire instruction manual before proceeding.
- Ensure all components listed are present.
- Ensure you have all necessary tools before proceeding.
- Do not attempt to work on your vehicle when the engine is hot.
- Retain factory parts for future use.

| Label | Qty. | Description                  | Part Number  |
|-------|------|------------------------------|--------------|
| A1    | 1    | Air Filter (Pro 5R)          | 24-91117     |
| A2    | 1    | Air Filter (Pro DRY S)       | 21-91117     |
| B     | 1    | Housing                      | 05-5413049B2 |
| C     | 1    | Tube                         | 05-5413049B1 |
| D     | 1    | Seal, Trim: 3/4" Bulb (29"L) | 05-01507     |
| E     | 1    | Coupling, Silicone Elbow     | 05-01529     |
| F     | 1    | Fitting, Smog Pump           | 05-01096     |
| G     | 1    | Cap, Smog Pump Fitting       | 03-50179     |
| H     | 3    | Grommet                      | 03-50647     |
| I     | 2    | Clamp #044                   | 03-50019     |
| J     | 1    | Grommet, Rubber              | 03-50139     |
| K     | 1    | Nipple, Brass Hose           | 03-50191     |

**Installation will require the following tools:**

8mm nut driver, 11mm wrench or adjustable wrench, Channel lock pliers

**Emissions Disclaimer:** This product is not currently CARB exempt and is not available for purchase in California or for use on any vehicle registered with the California Department of Motor Vehicles.






**Figure A**

**Refer to Figure A for Steps 1-4**

Step 1: Disconnect the smog pump connector ① from the factory filter housing. (If Applicable)

Step 2: Disconnect the rubber crankcase breather line ② from the factory filter housing.

Step 3: Using a pair of channel lock pliers, loosen the clamp ③ connecting the factory intake tube to the turbo inlet.

Step 4: Remove the factory filter housing and tube by pulling straight up off the mounting grommets, rotating the back of the housing forward to clear the intake air scoop.





Figure B

**Refer to Figure B for Step 5**

Step 5: Install the supplied grommets (4) in the three mounting holes on the bottom of your aFe Power housing as shown.

**Figure C****Refer to Figure C for Step 6**

Step 6: Install the supplied seal trim (5) along the top opening of the housing as shown. Trim to fit as necessary.



**Figure D****Refer to Figure D for Steps 7-9**

Step 7: Install the supplied flat grommet (6) into the 1" hole on your aFe Power intake tube.

Step 8: For vehicle equipped with a smog pump, install the supplied aluminum fitting (7) into the grommet. If your vehicle is not equipped with a smog pump, install the supplied cap into the grommet.

Step 9: Install the supplied brass fitting (8) into the intake tube. Tighten using an 11mm wrench or open face wrench.

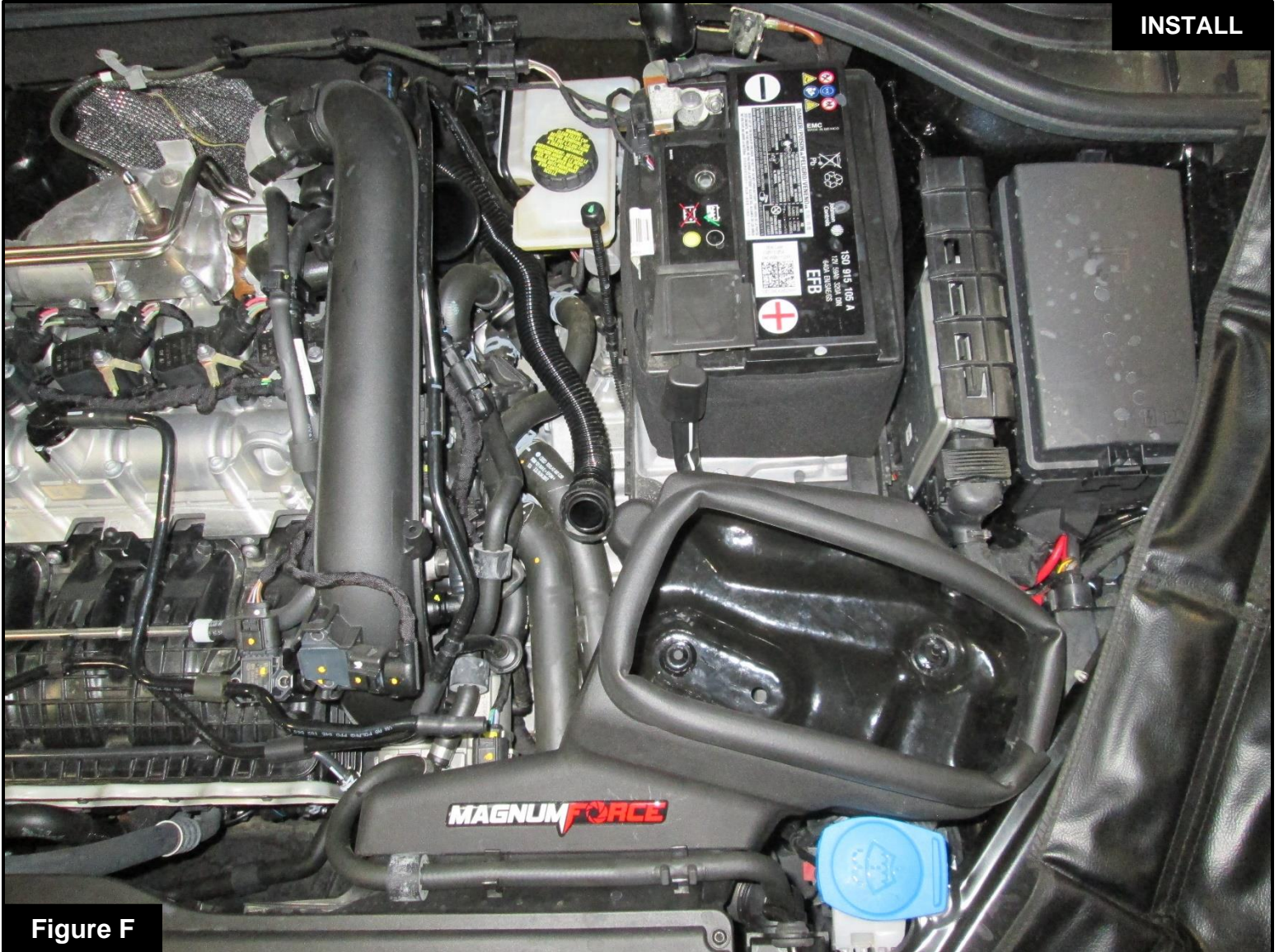


**Figure E****Refer to Figure E for Steps 10-11**

Step 10: Install the supplied elbow coupler (9) with the aFe POWER logo on top.

Step 11: Install one of the #044 clamps (10) on the coupler at the turbo inlet. Leave the clamp loose to allow the coupler to rotate for alignment.



**Figure F****Refer to Figure F for Step 12**

Step 12: Install your aFe Power filter housing into the vehicle by lining up the three grommets on the mounting pins on the factory battery tray. Press firmly until all 3 grommets are engaged.





Figure G

**Refer to Figure G for Step 13**

Step 13: Install your aFe Power air filter (11) into the housing through the top opening, ensuring that the retention bumps are on the outside of the housing. Place the filter clamp loosely on the filter opening.



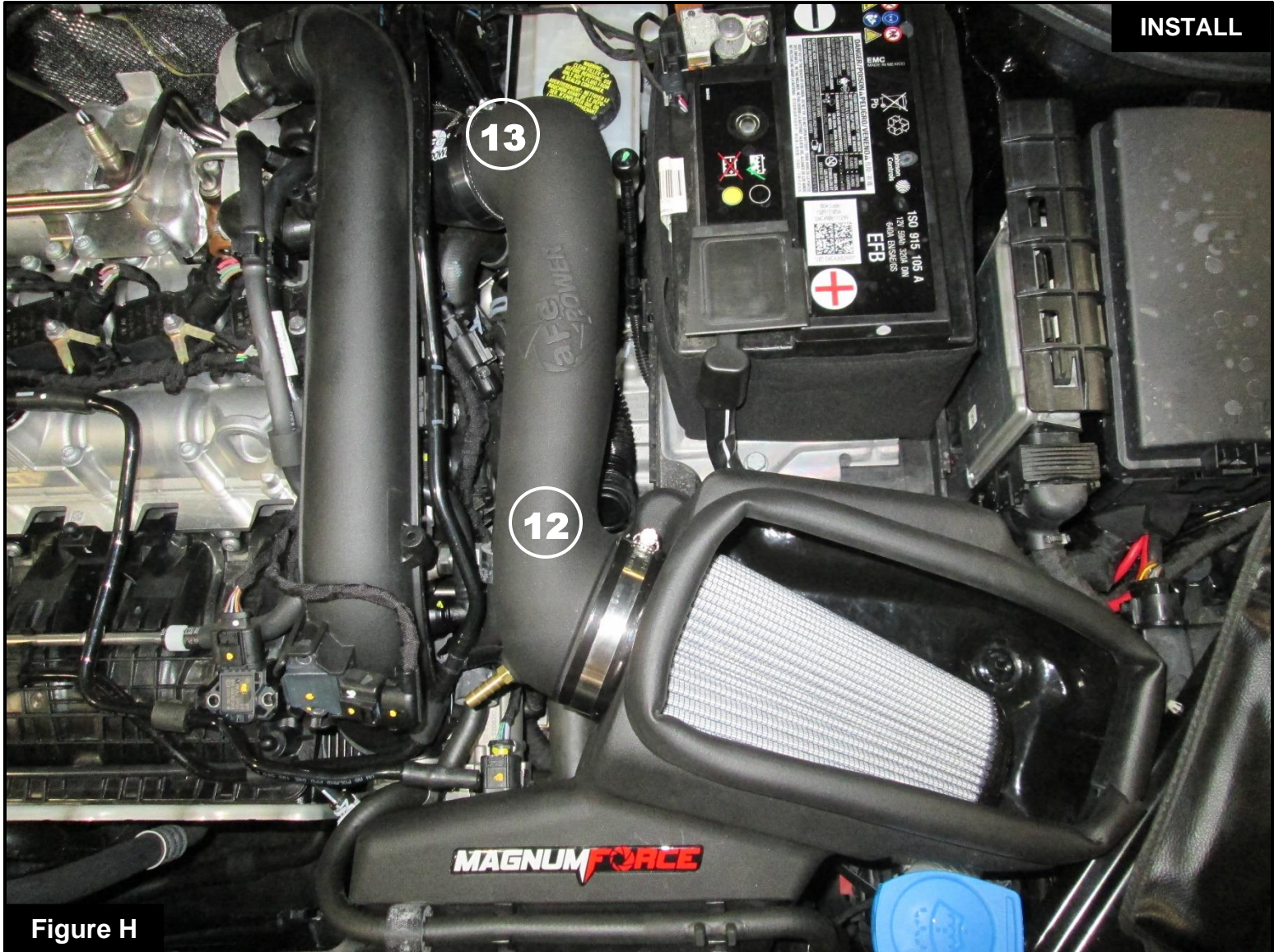


Figure H

**Refer to Figure H for Step 14**

Step 14: Install your aFe Power intake tube (12) with the remaining #044 clamp (13) into the vehicle by inserting into the filter first, then rotating down into the coupling at the turbo inlet. Rotate the coupling at the turbo inlet to align the tube before tightening all of the clamps using an 8mm nut driver.



**Figure I****Refer to Figure I for Steps 15-16**

Step 15: Reconnect the crankcase breather line (14) to the fitting on the side of your intake tube.

Step 16: If your vehicle is equipped with a smog pump, connect the smog pump line (15) to the fitting installed on your intake tube.





**Figure J**

**Refer to Figure J for Step 17**

Step 17: Confirm that all connections are secure and clamps tightened. Your installation is now complete.

Thank you for choosing aFe POWER!

**NOTE: Check all screws, clamps, and connectors are secure after 100-200 mi**