

advanced FLOW engineering

Magnum FORCE Stage-2 Air Intake System

Instruction Manual P/N: 54-13014D/ 54-13014R

Make: **Toyota** Model: **4Runner** Year: **1996-1998** Engine: **V6-3.4L**



- Please read the entire instruction manual before proceeding.
- Ensure all components listed are present.
- Ensure you have all necessary tools before proceeding.
- Do not attempt to work on your vehicle when the engine is hot.
- Disconnect the negative battery terminal before proceeding.
- Retain factory parts for future use.

Label	Qty.	Description	Part Number
A1	1	Pro DRY S Air Filter	21-91139
A2	1	Pro 5R Air Filter	24-91139
B	1	Tube	05-5413014B1
C	1	Housing	05-5413014B2
D	1	Fitting, Tee -5/16"	03-50318
E	2	Clamp, #048	03-50007
F	6	Clamp, Mini #006	03-50025
G	2	Screw, Hex Hd: M8	03-50031
H	1	Screw Hex Hd: M6	03-50032
I	1	Washer, Flat: M6	03-50070
J	2	Washer, Lock: M8	03-50086
K	2	Washer, Flat: M8	03-50159
L	1	Seal, Trim: 3/4" (21 inches)	05-00007
M	1	Seal, Trim: 7/16" (13 inches)	05-00072
N	1	Hose, Fuel: 1/2" (22 inches)	05-00027
O	1	Hose, Fuel: 3/8" (30 inches)	05-00110
P	1	Washer, Lock: M6	03-50071

Installation will require the following tool(s):

8mm nut driver, 10mm nut driver, 12mm nut driver or deep socket, and adjustable wrench.

Note: Legal in California for use on race vehicles only. The use of this device on vehicles used on public streets or highways is strictly prohibited in California and others states that have adopted California emission regulations.

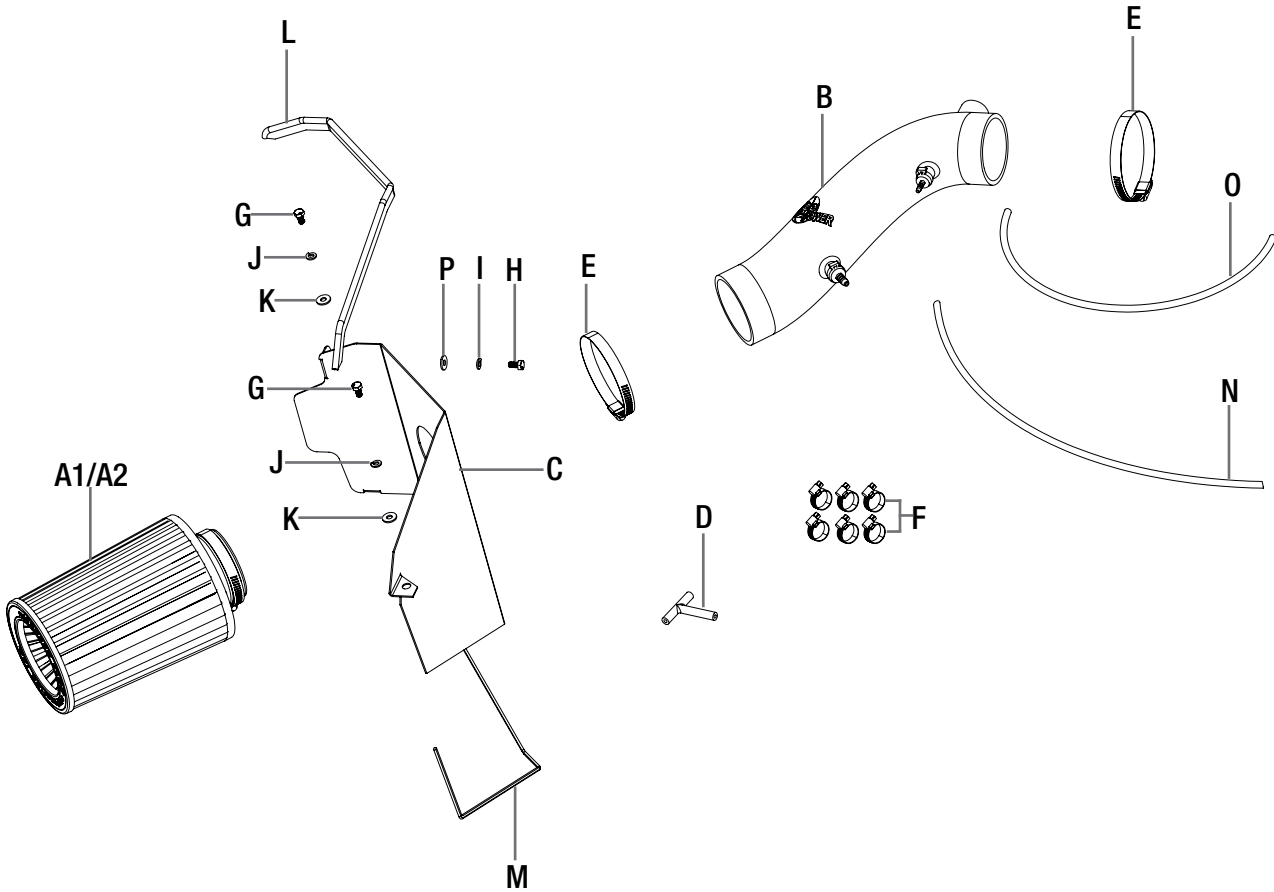
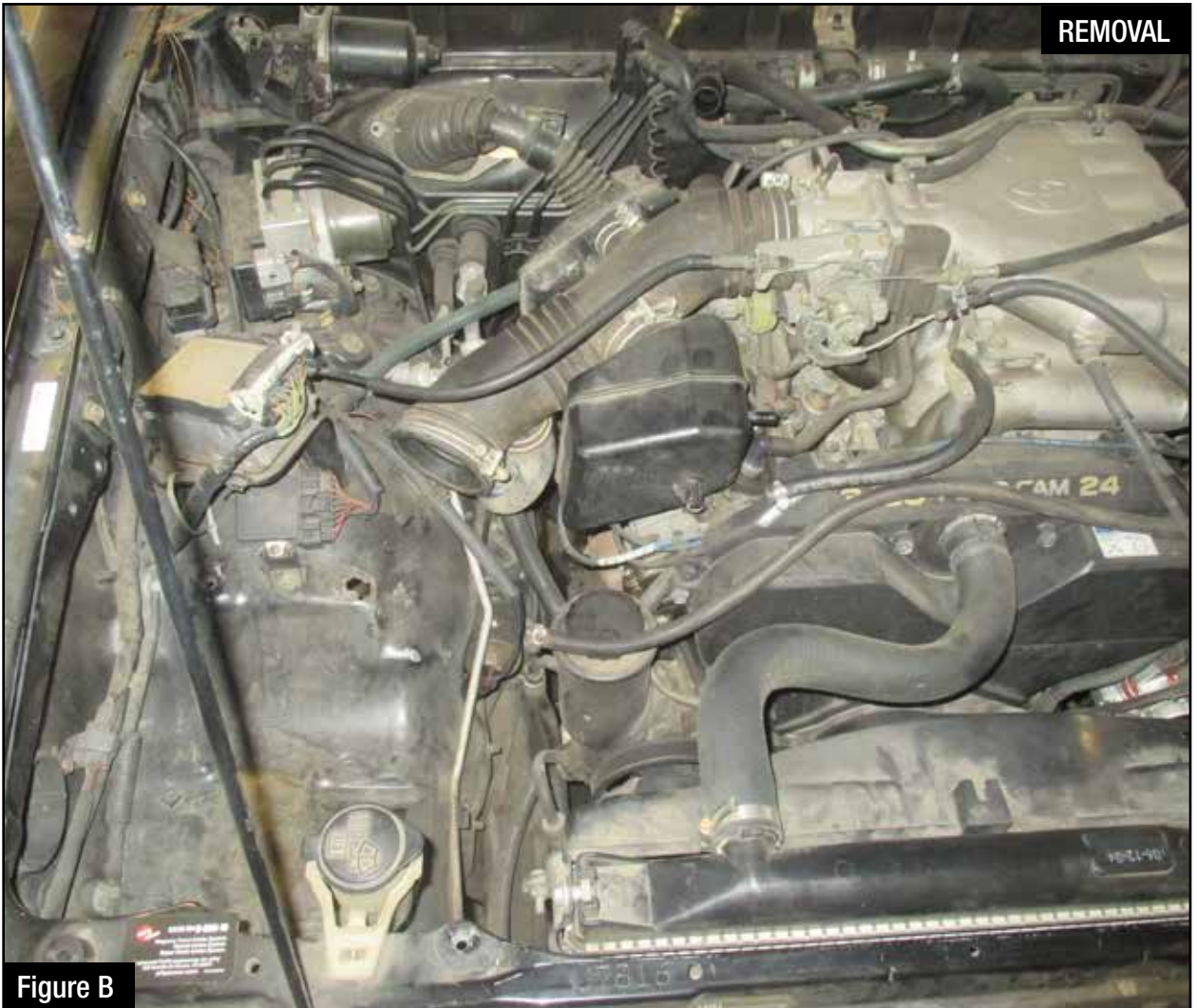



Figure A
Refer to Figure A for Steps 1-4

- Step 1: Disconnect the MAF sensor harness. ①
- Step 2: Disconnect the 3 hoses the stock intake. ②
- Step 3: Loosen the clamp on the stock intake tube connecting to the MAF cartridge.
- Step 4: Remove 12mm bolts on the stock airbox and remove the stock airbox out of the vehicle. ③



Refer to Figure B for Step 5

Step 5: Loosen the clamp on the throttle body connecting to the intake tube and remove out of vehicle.



Figure C

Refer to Figure C for Step 6

Step 6: Pre-install the trim seals onto the aFe housing.

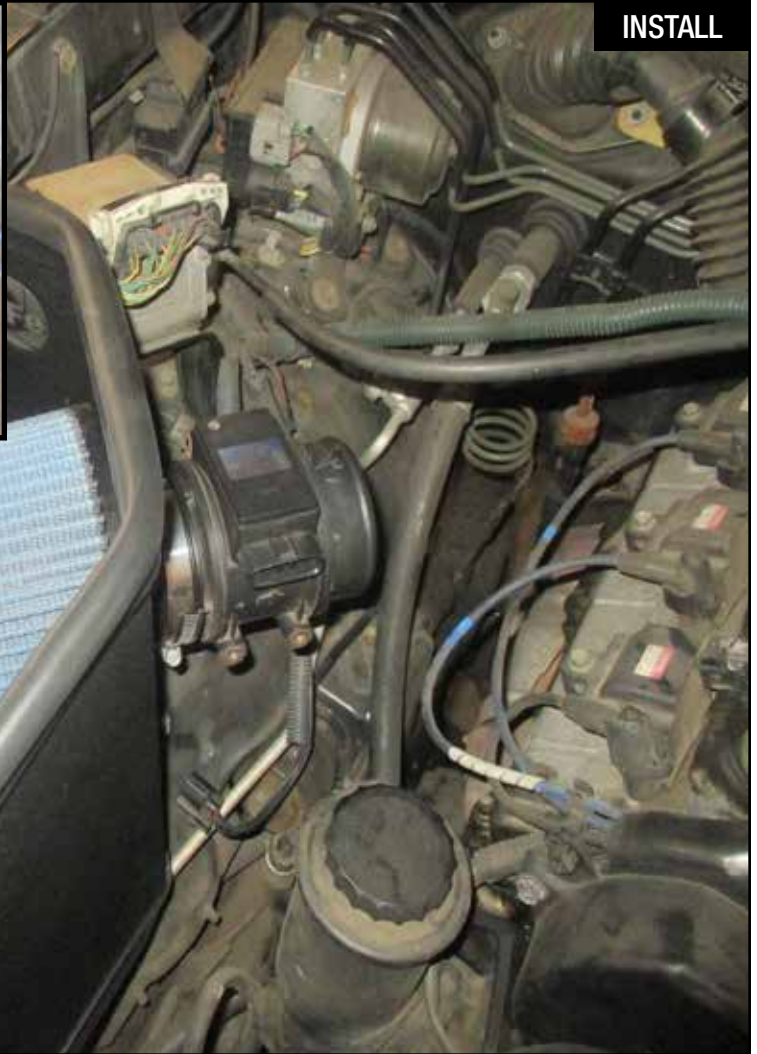


Figure D

Refer to Figure D for Steps 7-9

Step 7: Install the aFe housing with the provided hardware into the vehicle.

Step 8: Slide the aFe filter into the housing and assure filter retain bumps are lock onto the housing.

Step 9: Transfer the stock MAF cartridge from the stock airbox into the aFe filter and secure it by tightening the clamp.



Figure E

Refer to Figure E for Steps 10-11

Step 10: Install the silicone intake tube into the vehicle by sliding into the throttle body first then onto the MAF cartridge.

Step 11: Align intake tube and secure with the provided clamps.

INSTALL



Figure E

Refer to Figure E for Steps 12-17

Note: If vehicle is equipped power steering pump vent hose, included is a Tee fitting and mini clamps to connect in line with the Evap canister hose.

Step 12: With the provided hoses replace the crank case line and Evap canister line securing them with the provided mini clamps.

Step 13: Connect the 2 hose to afe intake tube.

Step 14: Reconnect the MAF harness to the cartridge.

Step 15: Connect the stock vacuum port in to the aFe intake tube

Step 16: Verify all clamps and hardware are tight at this time.

Step 17: Your installation is now complete.

Check out the collection of performance air intake systems we offer.