

advanced FLOW engineering

Instruction Manual P/N: 54-12842 / 51-12842

Make: **Ford** Model: **Edge** Year: **2011-2014** Engine: **V6-3.5L (Non-EcoBoost)**

Make: **Ford** Model: **Explorer** Year: **2011-2017** Engine: **V6-3.5L (Non-EcoBoost)**

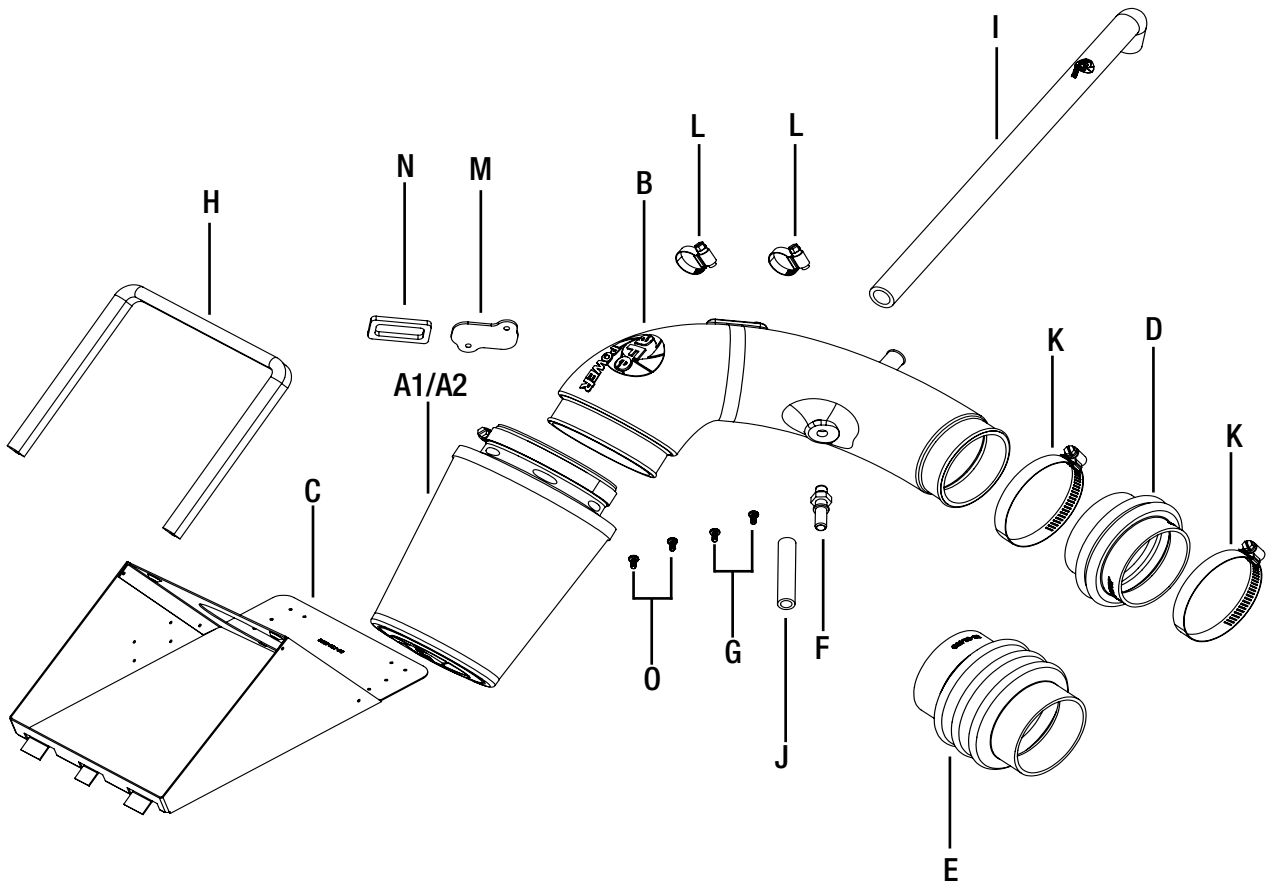


- Please read the entire instruction manual before proceeding.
- Ensure all components listed are present.
- Ensure you have all necessary tools before proceeding.
- Do not attempt to work on your vehicle when the engine is hot.
- Disconnect the negative battery terminal before proceeding.
- Retain factory parts for future use.

Label	Qty.	Description	Part Number
A1	1	Air Filter (Pro 5R)	24-90095
A2	1	Air Filter (Pro DRY S)	21-90095
B	1	Tube	05-12842B1
C	1	Housing	05-12842B2
D	1	Coupling, Silicone Reducer	05-01400
E	1	Coupling, Silicone Bellow	05-01409
F	1	Fitting, Vent (Small)	05-01338
G	2	Screw, Torx: M4	03-50491
H	1	Seal, Trim: 7/16" Bulb (21" inches)	05-00072
I	1	Hose, Vacuum Silicone: 5/8"	05-01208
J	1	Hose, Fuel: 3/8" (3" inches)	05-00110
K	2	Clamp, #052	03-50008
L	2	Clamp, Mini #012	03-50023
M	1	Block Off Plate, Sensor	05-01372
N	1	Gasket, MAS	05-00631
O	2	Screw, Flat Hd Socket Cap: M4	03-50455

Installation will require the following tools:
Torx T20, 8mm Nut Driver, Flat Head Screwdriver and 14mm socket.

Note: Legal in California for use on race vehicles only. The use of this device on vehicles used on public streets or highways is strictly prohibited in California and others states that have adopted California emission regulations.





Refer to Figure A for Steps 1-5

- Step 1: Disconnect the MAF harness from the sensor ①.
- Step 2: Unclip the top half of the OE airbox from the bottom half ②.
- Step 3: Disconnect the vacuum line ③ and the crankcase line ④ from the factory intake tube.
- Step 4: Loosen the clamp at the throttle body ⑤.
- Step 5: Carefully, remove the OE intake from the engine bay.



Figure B

Refer to Figure B for Steps 6-9

Step 6: Remove the MAF sensor from the OE tube.

Step 7: Install the aluminum fitting. Be careful not to over tighten. (7) Then install MAF sensor to the aFe tube using the supplied torx screws (6).

NOTE: For vehicles without a MAF sensor, use the supplied block off plate, gasket and flat head screws.

Step 8: For Ford Edge, use the smaller two hump coupling with the supplied clamps. (Do not tighten clamps) (8).

Step 9: For Ford Explorer, use the larger three hump coupling with the supplied clamps. (Do not tighten clamps) (9).

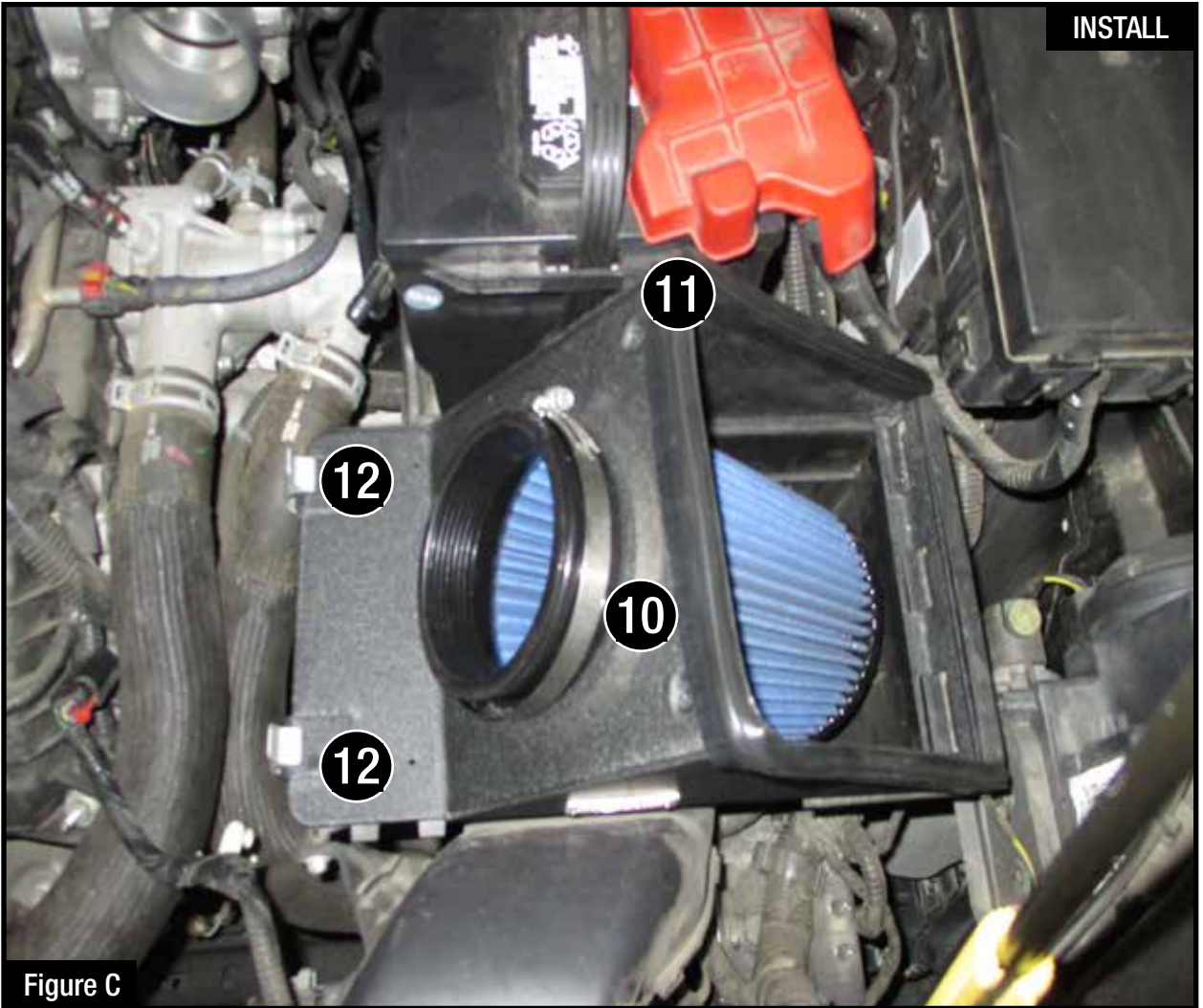


Figure C

Refer to Figure C for Steps 10-12

Step 10: Install the aFe air filter into the aFe housing. (10)

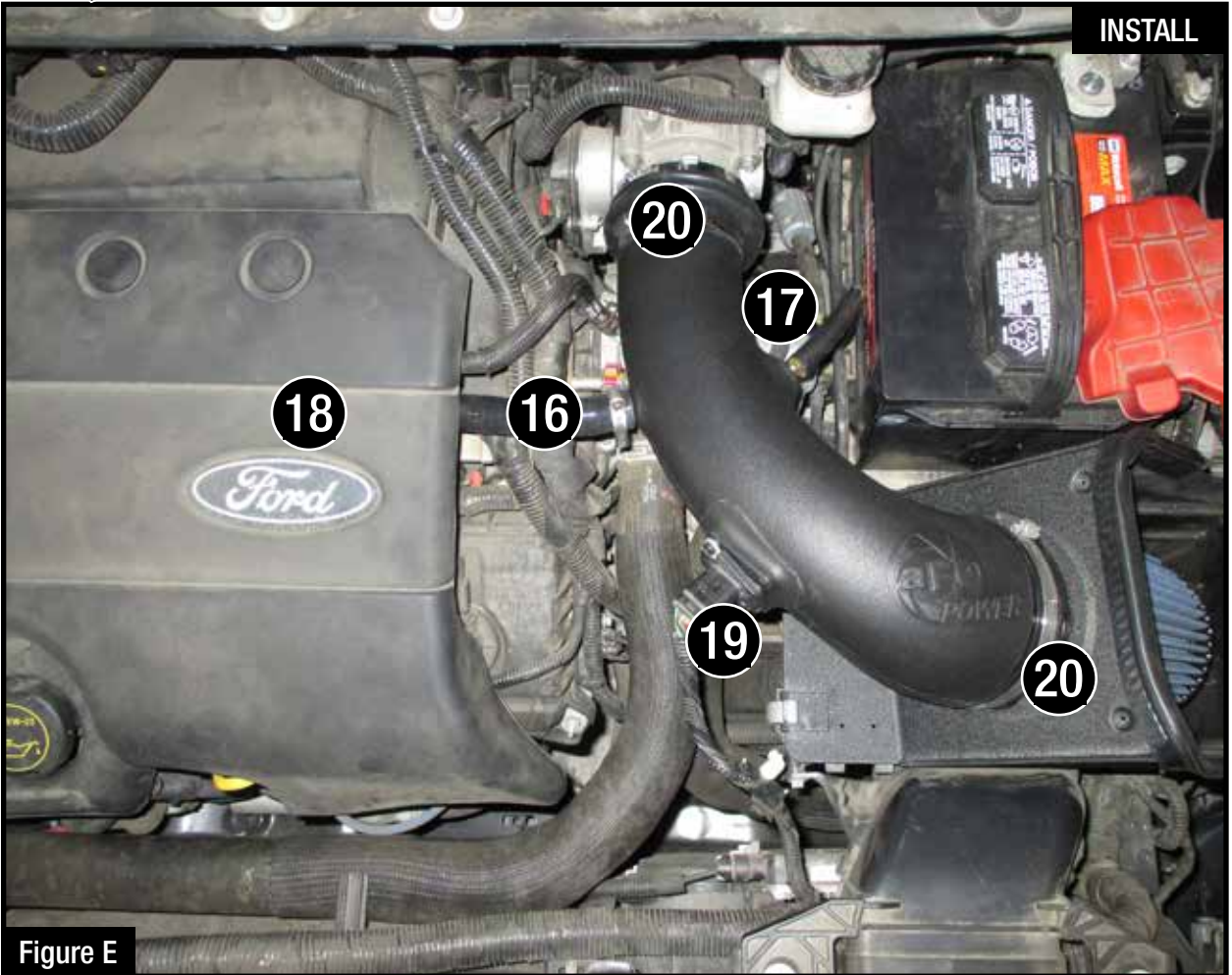
Step 11: Install the seal trim along the top edges of the aFe housing (11).

Step 12: Mount the assembled housing and air filter to the bottom half of the OE airbox. Make sure to latch the OE clips to the aFe housing (12).



Refer to Figure D for Steps 13-15

- Step 13: Remove the engine cover by detaching the two plastics posts (13), and 8 mm nut (14). Do not discard this hardware.
- Step 14: Detach and remove the OE crankcase vent hose.
- Step 15: Install the supplied hose with one of the supplied mini clamps (15), in the orientation as shown. Do not tighten clamp at this time.



INSTALL

Figure E

Refer to Figure E for Steps 16-22

- Step 16: Install the assembled aFe tube, air filter side first. Then connect at the throttle body.
- Step 17: Connect the crankcase vent hose with the second supplied mini clamp (16).
- Step 18: Adjust the crankcase vent hose, then tighten the mini clamps.
- Step 19: Connect the vacuum hose (17). Install the shorter supplied hose to the OE vacuum hose, then attach to the aFe intake tube.
- Step 20: Re-install the engine cover using the OE plastic posts and 8 mm nut, removed in Step 13 (18).
- Step 21: Reconnect the MAF harness to the sensor (19).
- Step 22: Adjust the intake tube to sit comfortably, and tighten all clamps (20). Your installation is now complete.

NOTE: Check all bolts, clamps, and connectors after 200 miles.

Check out the collection of performance air intake systems we offer.