

advanced FLOW engineering

Instruction Manual P/N: 51-12832 / 54-12832 / 75-12832

Make: **GM** Model: **Colorado/Canyon** Year: **2016-2017** Engine: **I4-2.8L (td)**



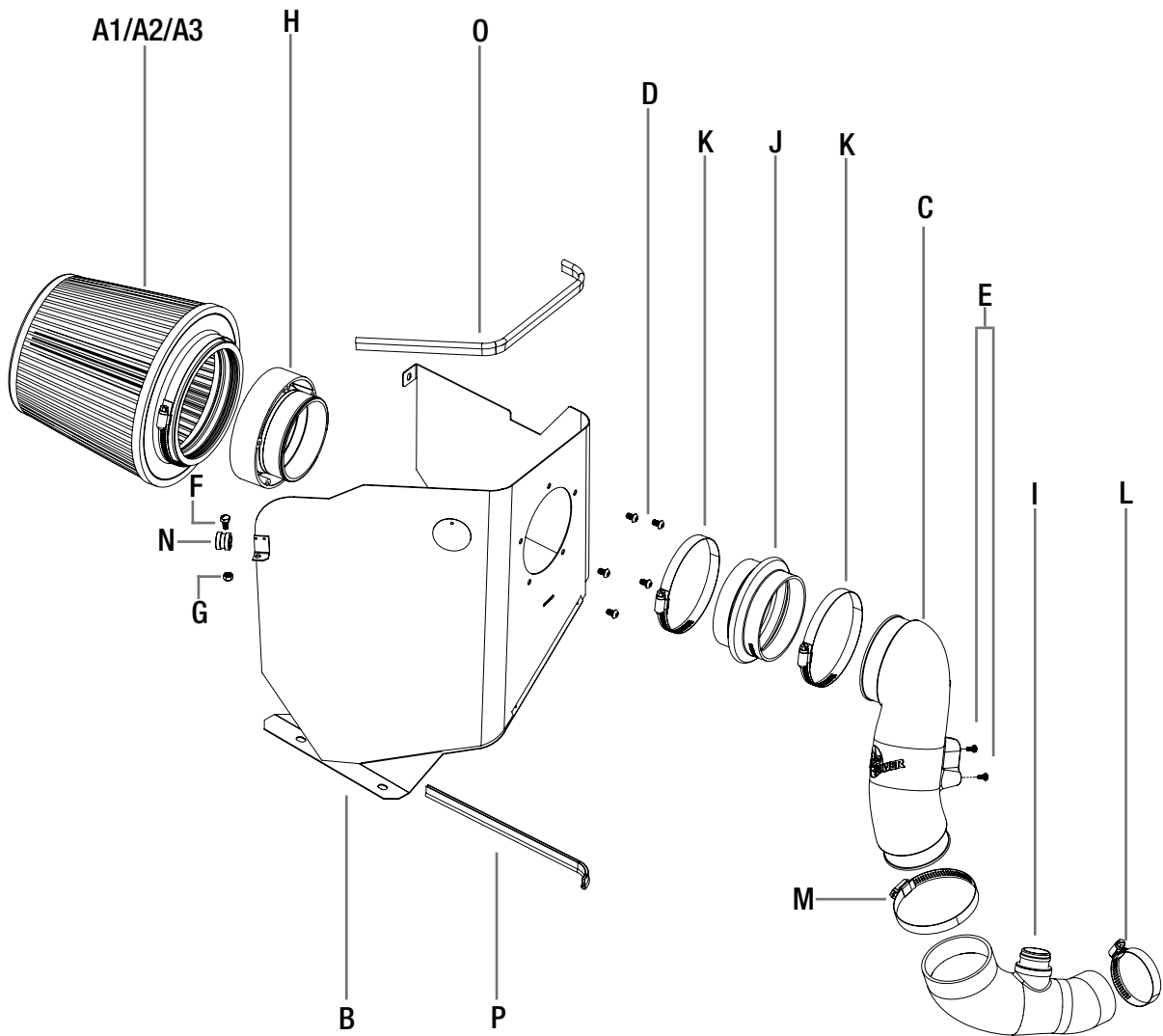
- Please read the entire instruction manual before proceeding.
- Ensure all components listed are present.
- If you are missing any of the components, call customer support.
- Ensure you have all necessary tools before proceeding.
- Do not attempt to work on your vehicle when the engine is hot.
- Disconnect the negative battery terminal before proceeding.
- Retain factory parts for future use.

| Label | Qty. | Description | Part Number |
|-------|------|------------------------------|-----------------------|
| A1 | 1 | Pro DRY S Air Filter | 21-91051 (Gray Media) |
| A2 | 1 | Pro 5R Air Filter | 24-91051 (Blue Media) |
| A3 | 1 | Pro-GUARD 7 Air Filter | 72-91051 (Gold Media) |
| B | 1 | Housing | 05-12832B2 |
| C | 1 | Tube | 05-12832B1 |
| D | 5 | Screw, Btn Hd Socket:M6x1x10 | 03-50113 |
| E | 2 | Screw, Torx: M4x.7x8mm | 03-50491 |
| F | 1 | Screw, Hex Hd: M6x1x12 | 03-50032 |
| G | 1 | Nut, Hex Nylon Lock: M6x1.0 | 03-50185 |
| H | 1 | Adaptor | 05-00611 |
| I | 1 | Coupling, Silicone Elbow | 05-01376 |
| J | 1 | Coupling, Silicone Hump | 05-01399 |
| K | 2 | Clamp, 064 | 03-50006 |
| L | 1 | Clamp, 044 | 03-50019 |
| M | 1 | Clamp, 052 | 05-50008 |
| N | 1 | Clamp, Fixing: 1/2" ID | 03-50377 |
| O | 1 | Seal, Trim (35" in.) | 05-00072 |
| P | 1 | Seal, Trim (12" in.) | 05-00072 |

Installation will require the following tools:

8mm & 10mm nut driver, flathead screwdriver & #3 Phillips screwdriver, T20 driver, 4mm Allen, 10mm wrench

Note: Legal in California for use on race vehicles only. The use of this device on vehicles used on public streets or highways is strictly prohibited in California and others states that have adopted California emission regulations.



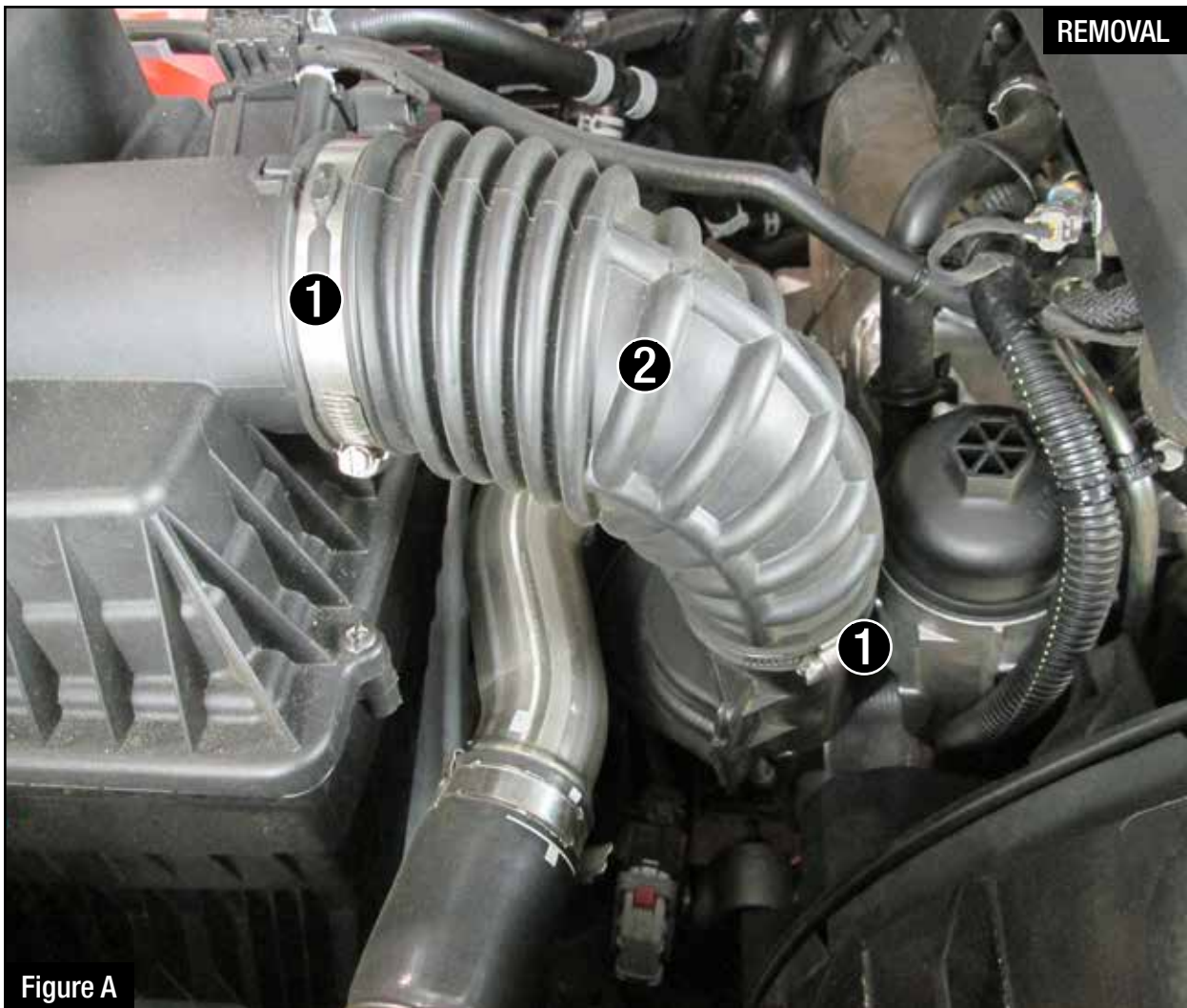


Figure A

Refer to Figure A for Step 1

Step 1: Use an 8mm nut driver to loosen the stock clamps ①. Remove the upper intake tube ②.



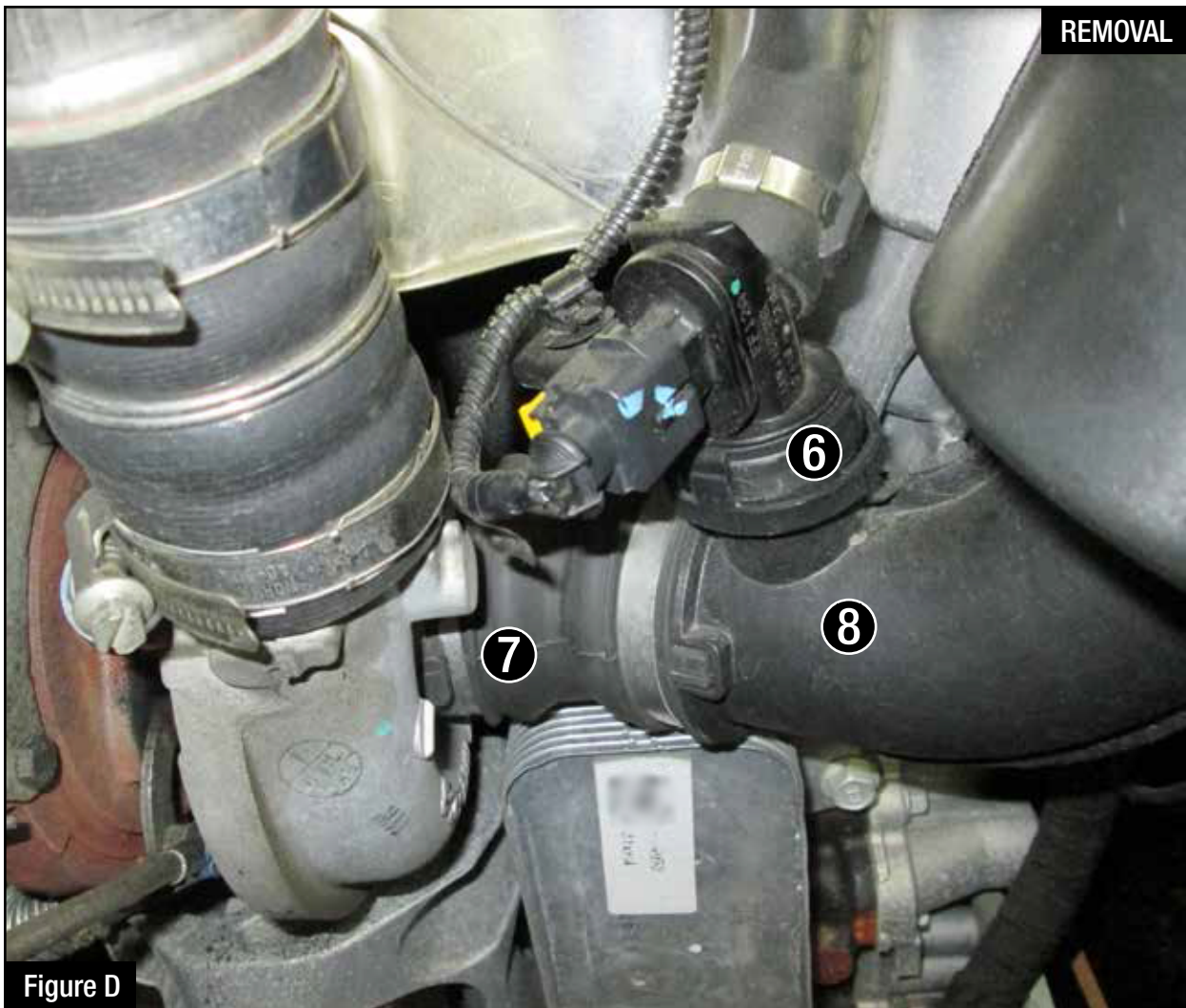
Figure B

Refer to Figure B for Step 2

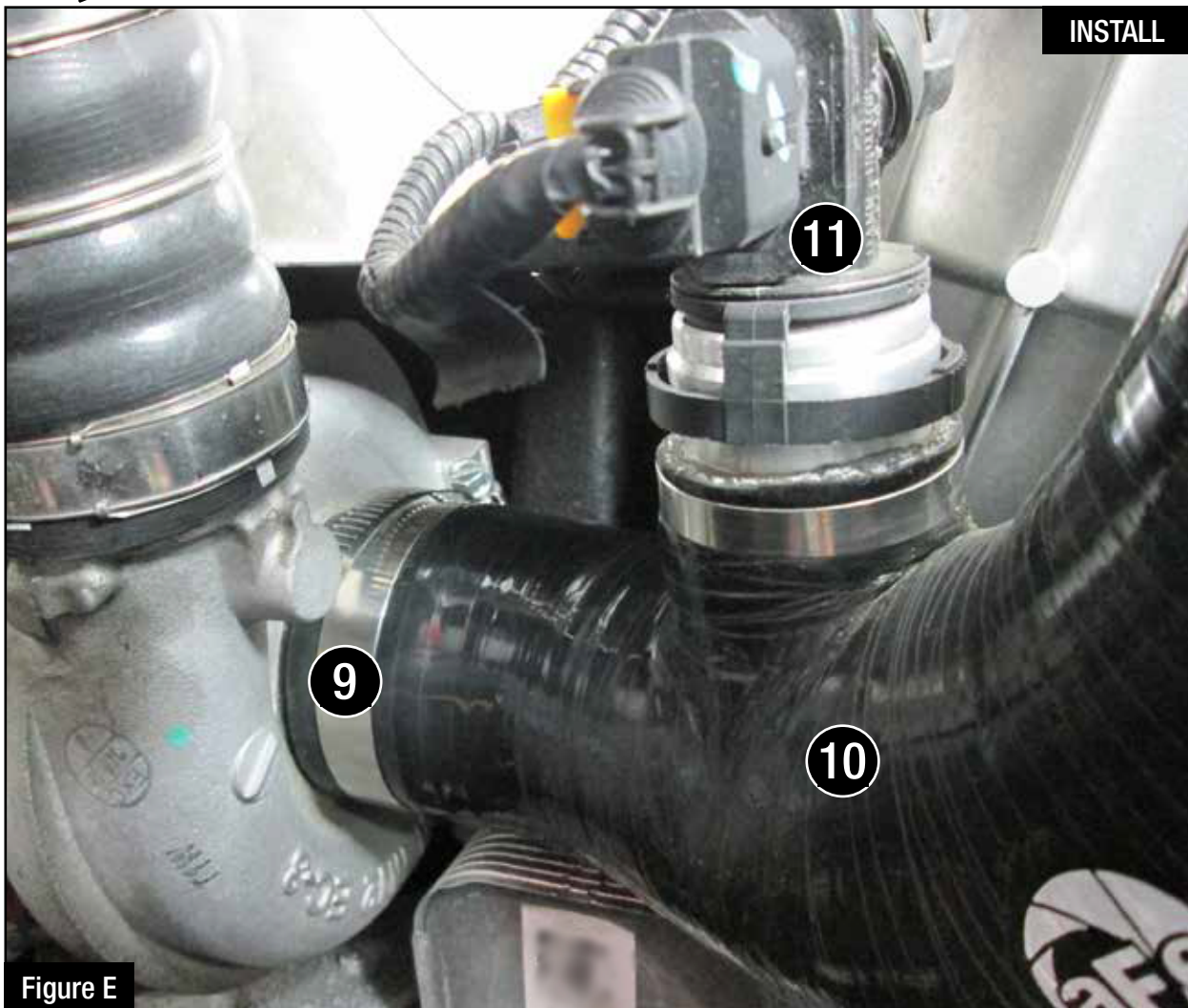
Step 2: Disconnect the mass air flow sensor (3). Disengage the wire loom clip (4) from the air box. Remove the upper half of the air box with a #3 Phillips screwdriver and remove the air filter.

**Figure C****Refer to Figure C for Step 3**

Step 3: Use a 10mm nut driver to remove the two nuts (5) holding the air box and set aside. Remove the air box with the attached air inlet by pulling up to release the air box from its mounting grommet.

**Figure D****Refer to Figure D for Step 4**

Step 4: Disconnect the breather hose (6) and loosen the clamp (7) at the turbo using an 8mm nut driver. Remove the lower intake tube (8).


Figure E
Refer to Figure E for Step 5

Step 5: Place the supplied #044 clamp (9) on the supplied silicone elbow coupler (10). Install the coupler with clamp on the turbo and tighten the clamp. Connect the breather hose (11).



Figure F

Refer to Figure F for Step 6

Step 6: Using a Torx 20 driver, remove the mass air flow sensor (12) from the upper half of the air box and install it on the aFe intake tube with the two supplied screws. Do not overtighten.



Figure G

Refer to Figure G for Step 7

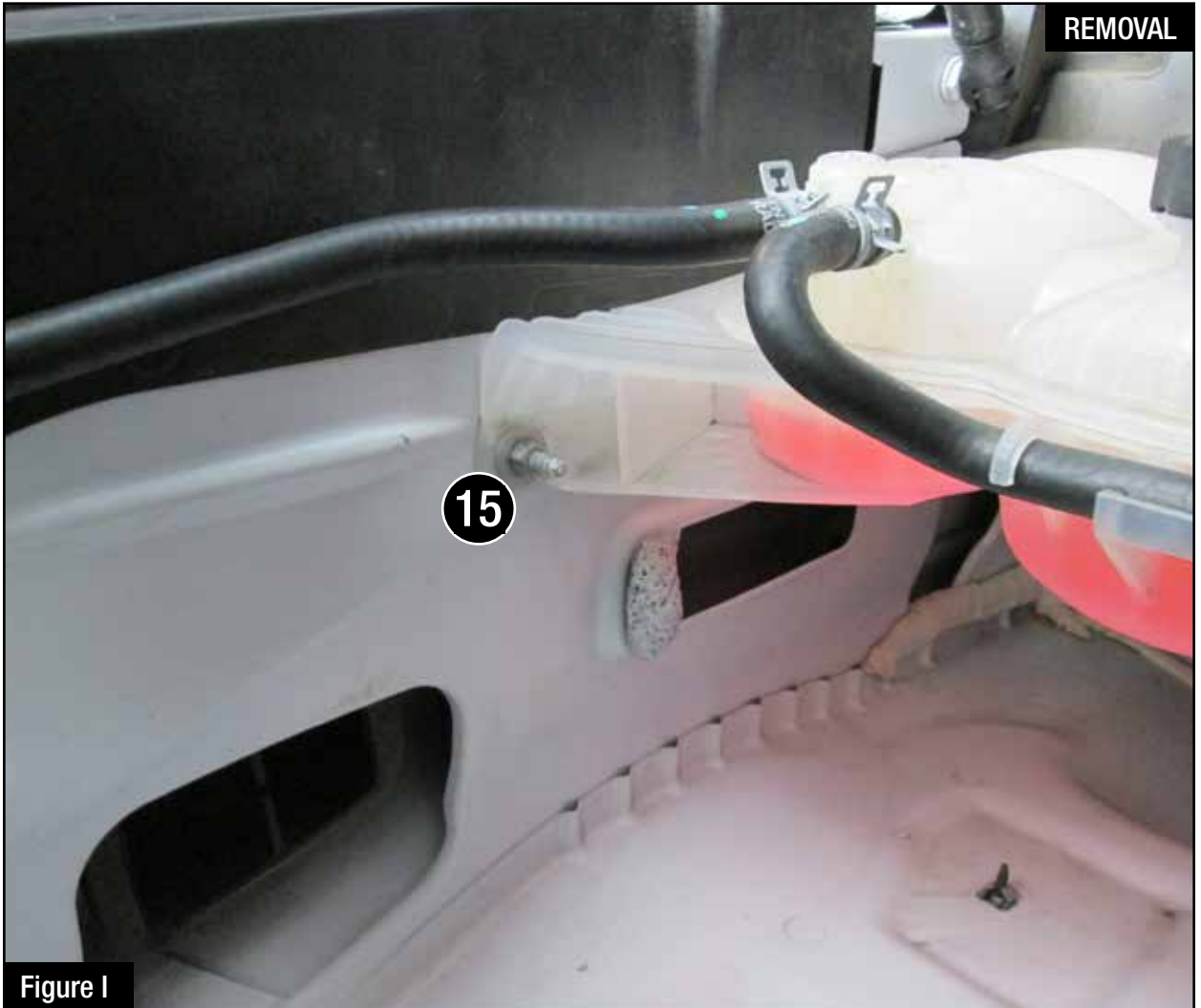
Step 7: Install the filter adaptor (13) on the aFe air filter housing using a 4mm allen wrench and the five supplied button head hex screws.



Figure H

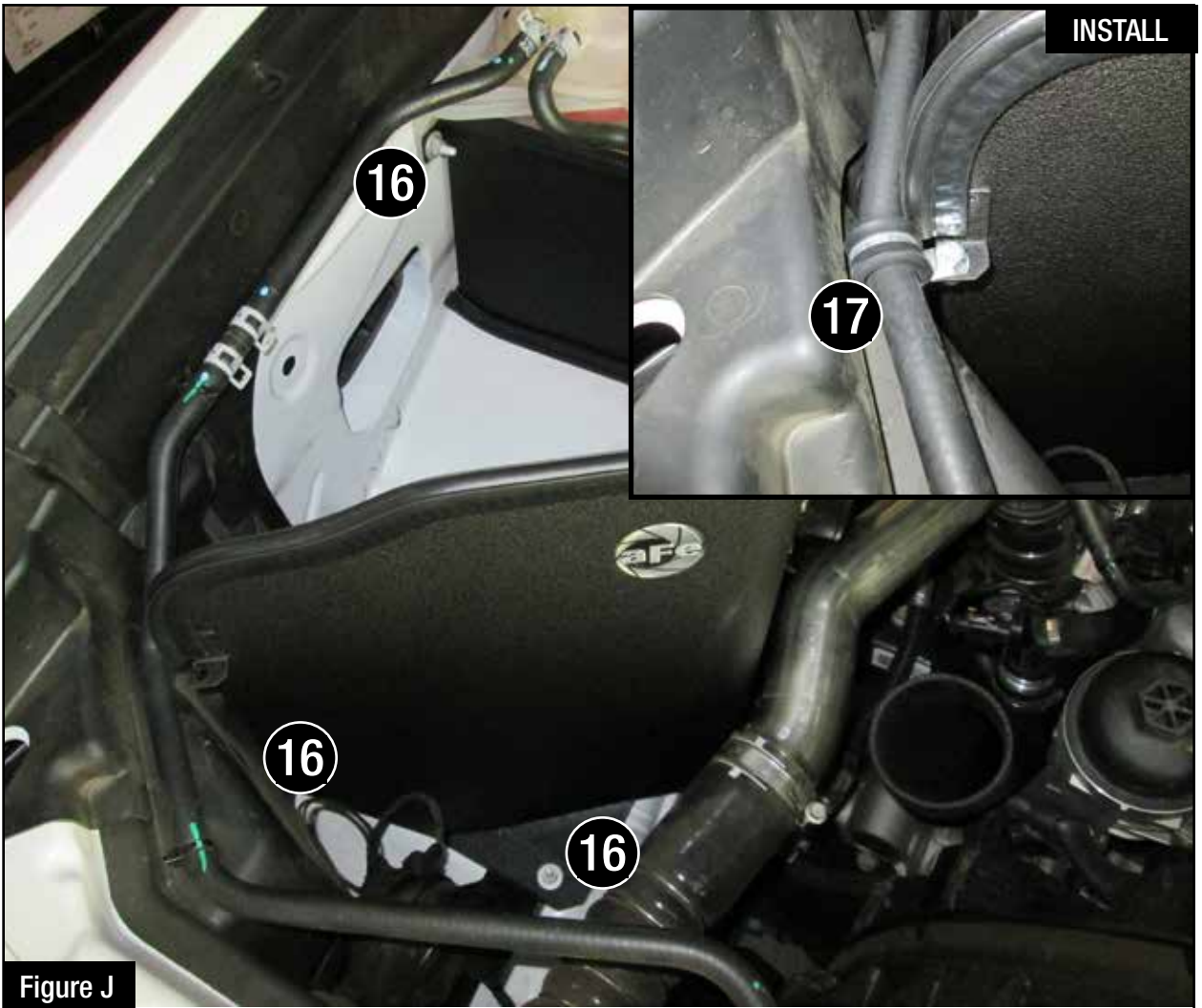
Refer to Figure H for Step 8

Step 8: Install the upper and the lower trim seal (14) onto the aFe air filter housing.



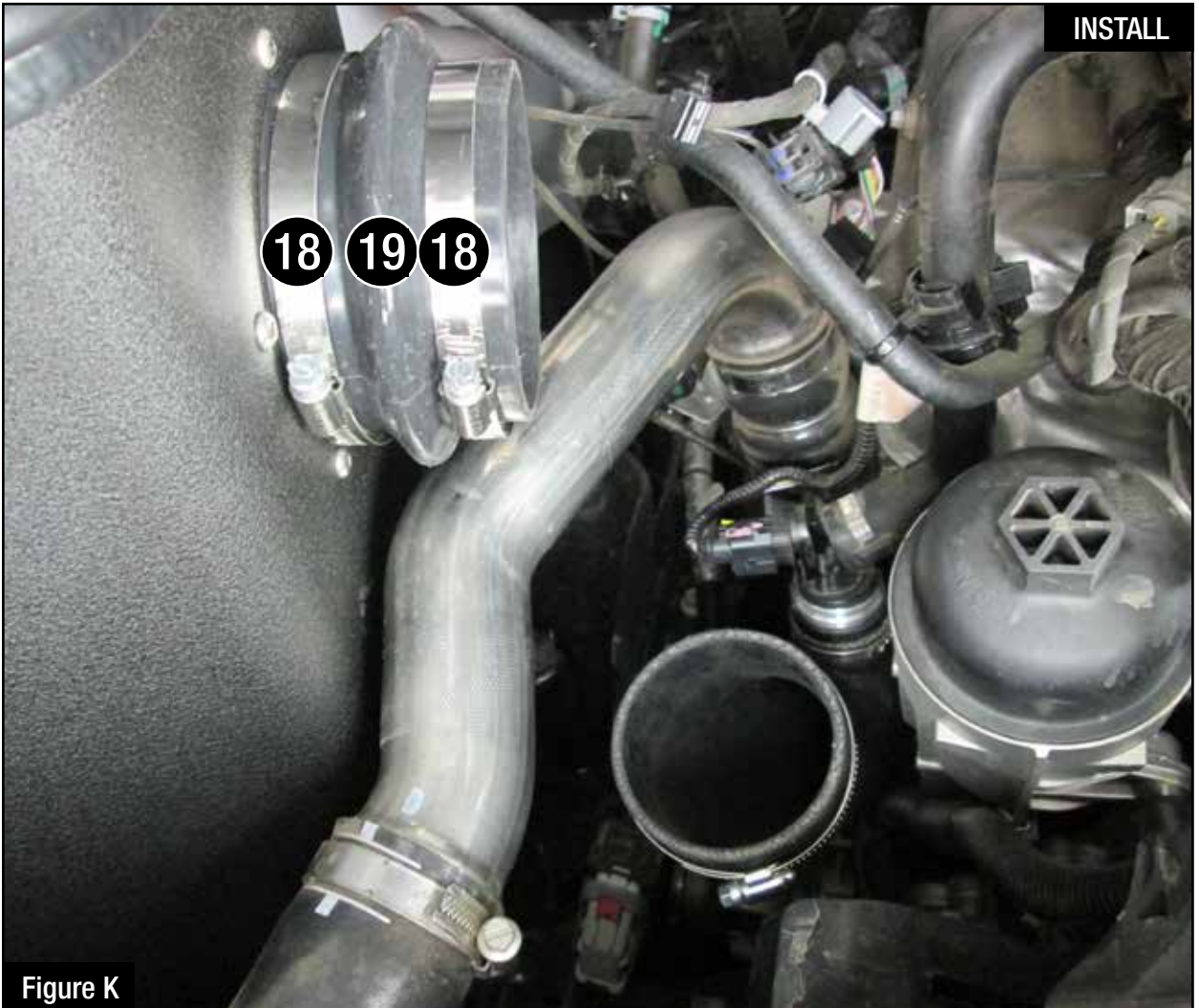
Refer to Figure I for Step 9

Step 9: Remove the nut (15) from the front of the coolant reservoir using a 10mm nut driver. Save for later use.



Refer to Figure J for Steps 10-11

- Step 10: Install the aFe housing in the vehicle using the three factory nuts (16) and a 10mm nut driver.
- Step 11: Install the fixing clamp (17) to the housing and secure the coolant hose with the M6 bolt and nut using a 10mm wrench and a 10mm nut driver.

**Figure K****Refer to Figure K for Step 12**

Step 12: Install one of the supplied #064 clamps (18) onto the supplied silicone coupler (19). Install the coupler with the clamp onto the air filter adaptor. Place the other #064 clamp on the coupler (18). Do NOT tighten clamps at this time.



Figure L

Refer to Figure L for Step 13

Step 13: Install the supplied #052 clamp (20) on the silicone elbow coupler. Install the aFe intake tube into the vehicle by sliding into the coupler at the air filter first, then slide it into the silicone elbow coupler. Tighten all clamps.



Figure M

Refer to Figure M for Step 14

Step 14: Re-connect the Mass Air Flow Sensor (21).

INSTALL



Figure N

Refer to Figure N for Step 15

Step 15: Install the air filter and tighten the clamp. Your installation is now complete. Thank you for choosing aFe Power!

NOTE: Check all bolts, clamps, and connectors after 200 miles.



Pro DRY S Air Filter



P/N: 21-91051

Pro 5R Air Filter



P/N: 24-91051

Pre-Filter



P/N: 28-10303

Pro DRY S Restore Kit



P/N: 90-59999

Blue Squeeze Restore Kit



P/N: 90-50501

DPF-Back Exhaust System



P/N: 49-44064-B (Blk Tip)
49-44064-P (Pol Tip)

Side-Exit Exhaust System



P/N: 49-44065-B (Blk Tip)
49-44065-P (Pol Tip)

Intercooler Tubes



P/N: 46-20264-B (Blk)
46-20264-R (Red)

SCORCHER HD Module



P/N: 77-44009

Coilovers



P/N: 501-5600-03 (Front)

Shocks



P/N: 502-0052-02 (Rear)

Warranty

General Terms:

- aFe warrants their products to be free from manufacturer's defects due to workmanship and material.
- This warranty applies only to the original purchaser of the product and is non-transferrable.
- Proof of purchase of the aFe product is required for all warranty claims.
- Warranty is valid provided aFe instructions for installation and/or cleaning were properly followed.
- Proper maintenance with regular inspections of product is required to insure warranty coverage.
- Damage due to improper installation, abuse, unauthorized repair or alteration is not warranted.
- Incidental or consequential damages or cost, including installation and removal of part, incurred due to failure of aFe product is not covered under this warranty.
- All warranty is limited to the repair and/or replacement of the aFe part. To request Return Goods Authorization ("RGA"). Upon receipt of the RGA, you must return the product to the address provided in the RGA, freight prepaid and accompanied with a dated proof of purchase and the RGA. Upon receipt of the defective product and upon verification of proof of purchase, aFe will either repair or replace the defective product within a reasonable time, not to exceed thirty days.

| Product Category | P/N Prefix | Warranty duration |
|----------------------------------|------------------------|--------------------------|
| Direct OE Replacement Filters | 10, 11, 30, 31, 71, 73 | Life of the vehicle |
| Racing Filters | 18 | 1 year |
| Universal | 21, 24, 72 | 2 years |
| Air Intake Systems | 50, 51, 54, 55, 75 | 2 years |
| Exhaust Systems | 49 | 2 years |
| Intercoolers & Intercooler Tubes | 46-2 | 2 years |
| Intake Manifolds | 46-1 | 2 years |
| Differential Cover | 46-7 | Life of the vehicle |
| Exhaust Manifolds | 46 | 2 years |
| Throttle Body Spacers | 46-3 | 2 years |
| Fluid Filters | 44 | 90 days |
| Pre-Filters | 28 | 2 years |
| Heavy Duty OE Replacement | 70 | 2 years |
| PowerSports OE Replacement | 81, 87 | 2 years |
| PowerSports Intake Systems | 85 | 2 years |

No other warranty expressed or implied applies nor is any person or advanced FLOW engineering authorized to assume any other warranty. Some States do not allow the exclusion or limitation of incidental or consequential damages or do not allow limitations on how long an implied warranty lasts, so the above limitations or exclusions may not apply to you. This warranty gives you specific legal rights, and you may also have other rights which vary from State to State.

Feel the difference with aFe.

Buy quality performance air intake systems in our online store.