

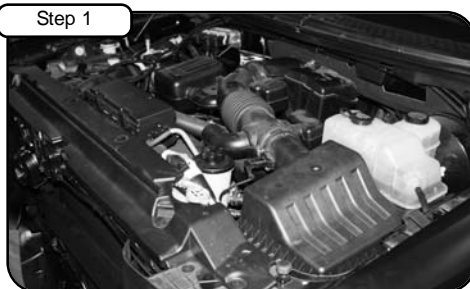


Intake Kit Installation Instructions: 2009 Ford F-150; '07-'09 Expedition; '07-'09 Navigator V8-5.4L Stage 2

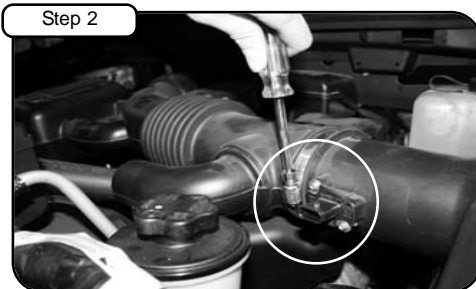
Kit P/N: 51/54-11622	Tools Required: 5/16" Nut Driver 4mm or 5/32" Allen Key 1/4" Nut Driver	Parts List: 1 Air Filter (Pro-5R™ 24-91040 or Pro Dry S™ 21-90053) 1 Housing 1 Coupler, Elbow (05-00464) 1 Coupler, Hump (05-00565) 1 Tube, Intake 3-1/2" 1 7/16" Trim Seal @ 24 5/8" L 1 Adaptor, Filter 3 Clamp, #056 5 Screws, Button Head M6	1 Torx Bit, T20 1 Clamp, #064 5 Washers, Wavy M6
-----------------------------	-----------------------------------------------------------------------------------------	------------------------------------------------------------------------------------------------------------------------------------------------------------------------------------------------------------------------------------------------------------------------------------	--------------------------------------------------------



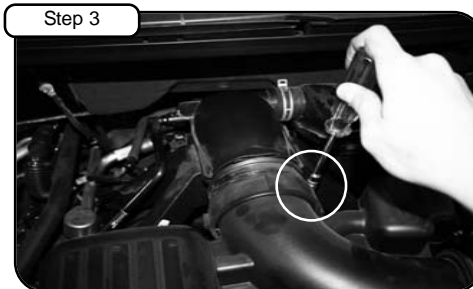
Complete Kit w/ Parts



Complete Stock Intake.
Disconnect the battery.



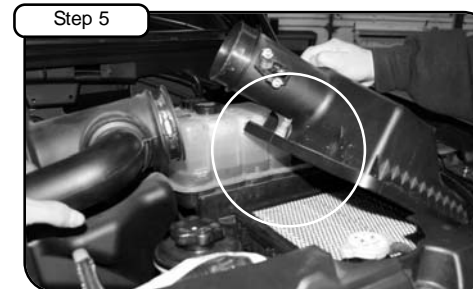
Disconnect the MAF sensor harness. Loosen the clamp on the airbox tube using a 5/16" nut driver.



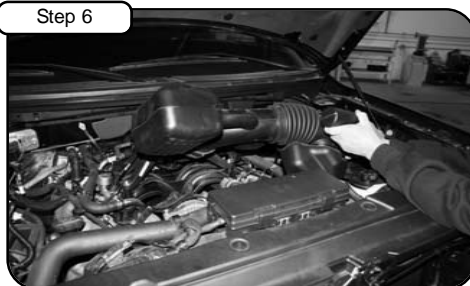
Loosen the clamp on the throttle body tube using a 5/16" nut driver.



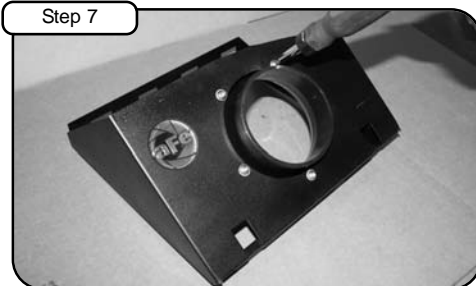
Disengage the 3 clips which secure the upper portion of the airbox. Remove the center clip which is not used with the aFe intake.



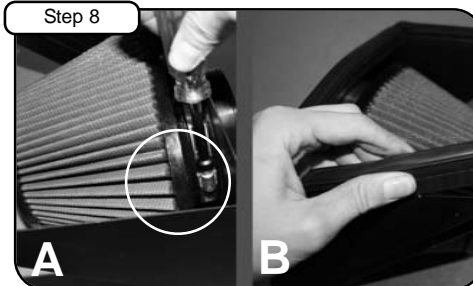
Remove the upper portion of the airbox from vehicle.



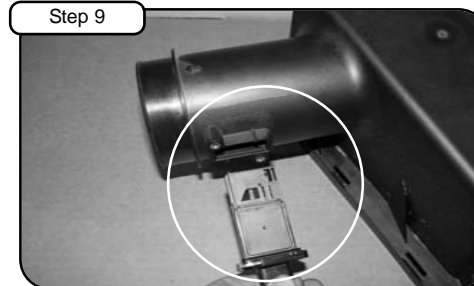
Remove the stock intake tube from the vehicle.



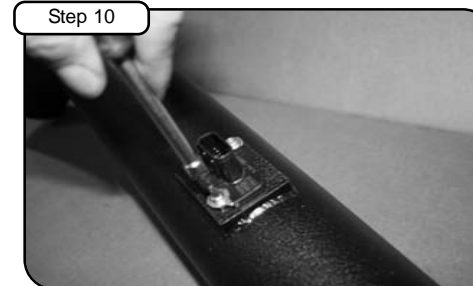
Attach the filter adaptor to the new housing using button head screws provided and tighten using a 4mm allen key.



A) Attach the air filter to the adaptor and tighten using a 5/16" nut driver. B) Attach trim seal to housing.



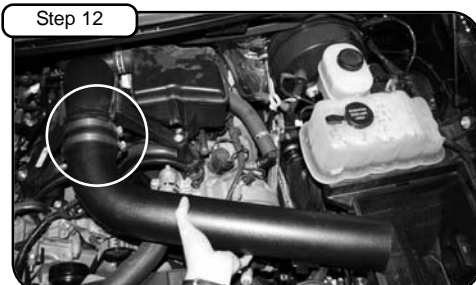
Remove the MAF sensor from the airbox using a T-20 torx bit and save hardware for later install.



Install the MAF sensor into the new tube using the screws removed in step 9.



Attach the coupler with the clamps provided to the filter adaptor. **Do not tighten clamps.**



Attach the intake tube to the vehicle with the straight coupler and clamps provided. **Do not tighten clamps.**



Install the new housing into vehicle. Engage the clips, secure housing and connect the intake tube to coupler.



Position tube and tighten all clamps using 5/16" nut driver. Re-connect MAF sensor harness.



Your Intake is now complete. Please check all clamps periodically and tighten as needed. Thank you for choosing aFe power.