



Installation Instructions: '99-'07 GM Trucks/Suburban/Tahoe/Yukon/Escalade/Avalanche V8-8.1L, 5.3L, 6.0L & 8.1L*

Kit P/N:	51/54-10091 / 51/54-10092 / 54-10093					
Make:	Chevrolet/GMC/Cadillac					
Model:	Year:	Engine:	Model:	Year:	Engine:	
Silverado/Sierra 1500	'99-'07	V8-4.8L/5.3L	Avalanche 1500/2500	'02-'05	V8-5.3L/8.1L*	
Silverado/Sierra 1500 HD	'01-'05	V8-6.0L	Yukon Denali	'01-'07	V8-6.0L	
Silverado/Sierra 2500	'99-'00	V8-5.3L/6.0L	Sierra Denali	'02-'07	V8-6.0L	
Silverado HD/Sierra HD 2500	'01-'07	V8-6.0L/8.1L*	C3 HD Chassis Cab	'01-'02	V8-8.1L*	
Silverado/Sierra 3500	'01-'07	V8-6.0L/8.1L*	Escalade	'02-'07	V8-5.3L/6.0L	
Tahoe/Yukon 1500	'00-'07	V8-4.8L/5.3L	Escalade EXT	'02-'07	V8-6.0L	
Suburban/Yukon XL 2500/3500	'00-'07	V8-5.3L/6.0L/8.1L*	Escalade ESV	'03-'07	V8-6.0L	

* Stage 2 PN 54-10092 & 93 will not fit in vehicles with the V8-8.1L engines.

Tools Required:
 5/16" nut driver or slotted screwdriver
 10mm socket or wrench
 Ratchet and extension

Note: Please confirm Parts List and read all instruction steps before proceeding with actual installation.

- Part List: Stage 1**
- 1 Air filter (replacement **Pro-5R™** 24-91007 or **Pro Dry 5™** 21-90015)
 - 1 Housing, Intake
 - 1 Adaptor, Intake
 - 2 Coupler, Reducer (05-00020)
 - 1 Clamp, #072
 - 1 Clamp, #064
 - 5 Screw Button Head, M6 x1x10
 - 5 Washer Wavy, M6
 - 1 Trim seal 3/4" bulb (27")

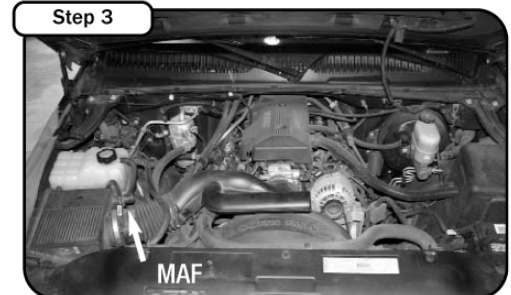
- Additional Parts List: Stage 2**
- 2 Clamp, #060
 - 2 Clamp, #064
 - 1 Tube, Intake
 - 1 Coupler, Hump (05-00565)



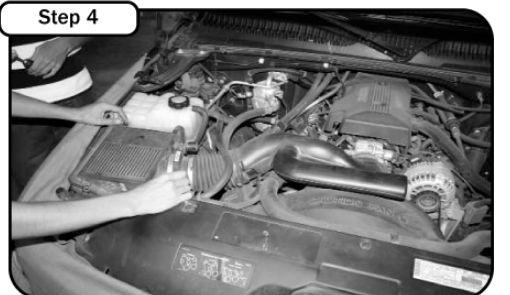
Step 1
 Complete kit. Stage 2 shown. Stage 1 kit does not include tube, 4 clamps and 2 couplers. Make sure you have all parts prior to installing kit.



Step 2
 Bonus part list includes: (1) Air Filter **Pro Dry 5™** 21-90015; (1) Restore Kit; (1) Pre-Filter



Step 3
 Complete stock intake.



Step 4
 Disconnect negative terminal from battery. Remove the four Phillips screws securing the top of the airbox. Disconnect the MAF sensor.



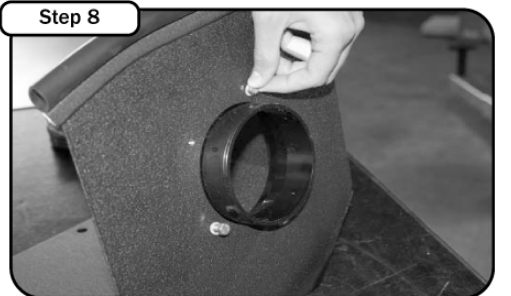
Step 5
 Loosen the hose clamp connecting the MAF sensor to the airbox. Remove upper portion of the airbox and MAF Sensor. Carefully set MAF sensor to the side for later use.



Step 6
 Grab the lower portion of the airbox then lift up and out. The box is secured with rubber gromets.



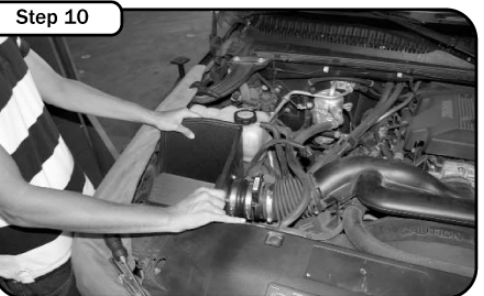
Step 7
 Remove the four 10mm bolts that secure the airbox base to the chassis. Save bolts for later use. Remove airbox tray out of vehicle.



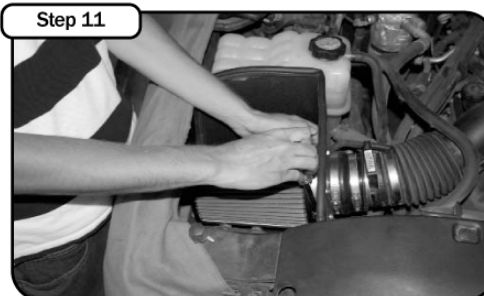
Step 8
 Place the air filter adaptor inside the housing. Secure the adaptor with the M6 button head screws and M6 wavy washers provided.



Step 9
 Slide the MAF sensor, clamps (#072 and #064), and reducer coupler (05-00020) on the air filter adaptor. Do not tighten the clamps at this time.



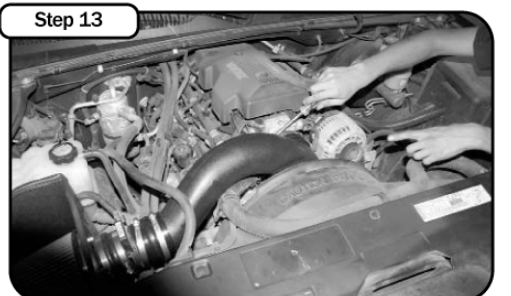
Step 10
 Place the rubber trim seal along edges of the housing. Bolt the housing to the engine bay using the factor bolts removed in Step 6. If installing stage 1 kit re-connect factory tube to MAF sensor.



Step 11
 Install intake filter into housing. Re-connect the MAF sensor. Your Stage 1 installation is now complete. Make sure you tighten all clamps and check all electrical connections. Re-check periodically. Continue onto steps 11-13 to install Stage 2.



Step 12
 Remove the factory intake tube out of the engine bay. On some models there is a plastic tab you have to disconnect that secures the tube to the wiring harness.



Step 13
 Place reducer coupling (05-00020) with clamps (#60) on throttle body and the hump coupler (05-00565) with clamps (#064) on the MAF sensor. Install intake tube. Tighten and secure all hose clamps. Rotate fan to make sure there is sufficient clearance between the intake tube and the fan.



Step 14
 Place enclosed CARB EO sticker on a clean/smooth surface on or near the intake system. EO identification label is required in passing the Smog Check inspection. Make sure all hoses and clamps are tight and that all electrical components are secure. Reconnect the battery at this time.

Note: Filter Cleaning and Re-oiling: When cleaning your aFe filter, be sure to use only aFe's "Restore Kit" (aFe P/N: 90-50001 blue oil aerosol, or aFe P/N: 90-50501 blue squeeze bottle oil).
Filter Replacement: **Pro-5R™** P/N: 24-91007 (black w/ blue media). **Pro Dry 5™** P/N: 21-90015 (black w/ white media)

Feel the difference with aFe.

Buy quality performance air intake systems in our online store.