

**advanced FLOW engineering**

**Instruction Manual** P/N: 52-74201-C

Make: **Chevrolet** Model: **Corvette Stingray (C7)** Year: **2014-2019** Engine: **V8-6.2L**  
Note: **Includes Grand Sport Models.**



- Please read the entire instruction manual before proceeding.
- Ensure all components listed are present.
- Ensure you have all necessary tools before proceeding.
- Do not attempt to work on your vehicle when the engine is hot.
- Disconnect the negative battery terminal before proceeding.
- Retain factory parts for future use.

Label	Qty.	Description	Part Number
A1	1	Air Filter (Pro DRY S)	21-90088
A2	1	Air Filter (Pro 5R)	24-90088
B	1	Tube	05-74201C1
C	1	Housing	05-74202C2
D	2	Screw, Torx T20 M4 x .7x8	03-50491
E	1	Threadlocker	03-50162
F	2	Clamp, T-Bolt (3-3/4 - 4-1/16)	03-50265
G	2	Vent Fitting	05-01338
H	1	Coupling, Silicone Hump	05-01375
I	1	Plug, Hex Socket: 1/8" NPT	03-50410
J	1	Black Series Emblem	06-00151

Tools needed: 7mm, 8mm, 10mm and 7/16 Socket or nut driver, Ratchet and extension, flat head screw driver.

Note: Legal in California for use on race vehicles only. The use of this device on vehicles used on public streets or highways is strictly prohibited in California and others states that have adopted California emission regulations.

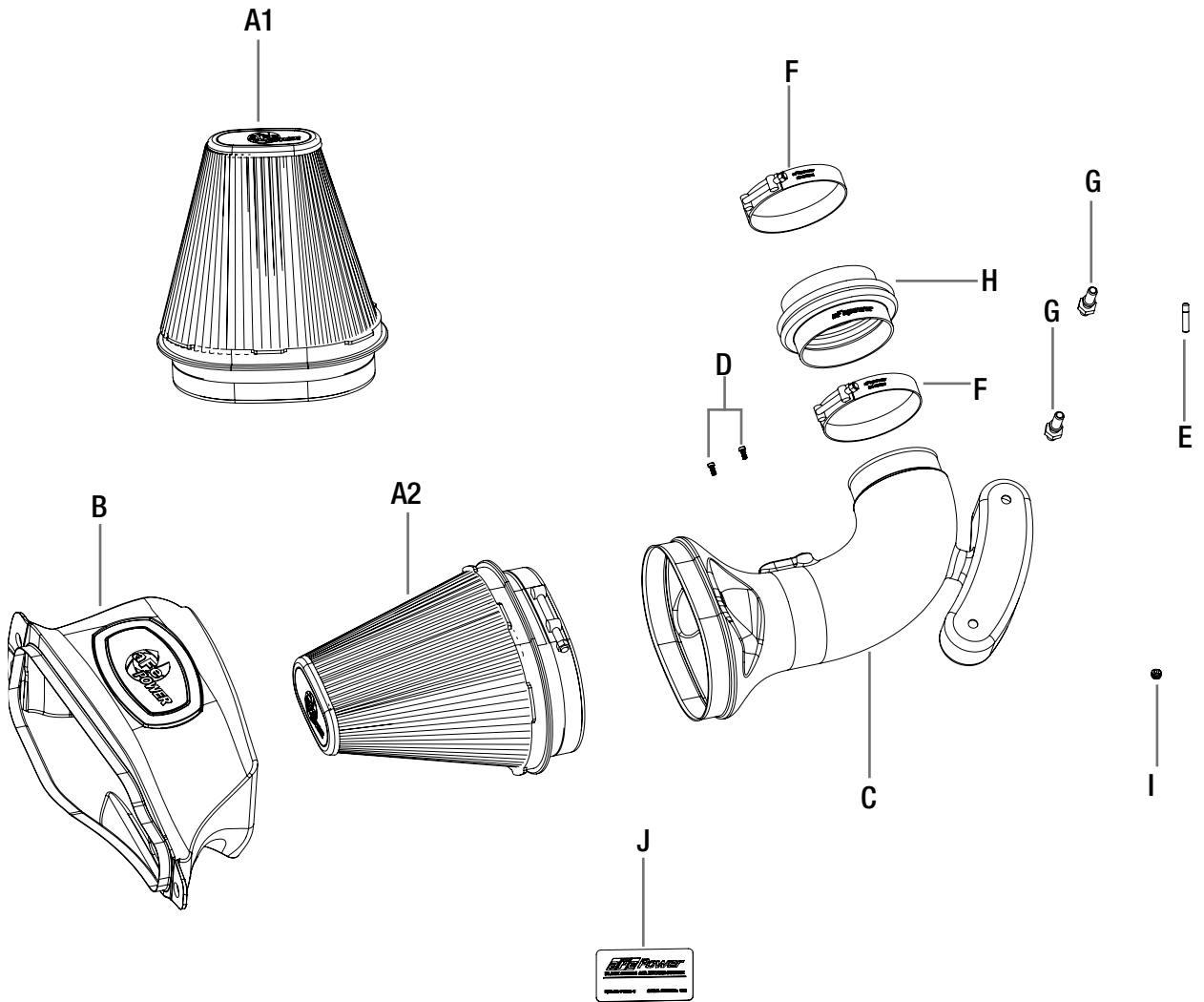




Figure A

**Refer to Figure A for Step 1**

Step 1: Remove the radiator air outlet channel by removing the four screws securing it with a 7mm socket or nut driver.



Figure B

**Refer to Figure B for Steps 2-3**

Step 2: Disconnect the Mass Air Flow (MAF) Sensor harness.

Step 3: Loosen the clamps at the throttle body and at the housing. Disconnect both vent hoses then remove the factory intake tube out of the vehicle.



Figure C

**Refer to Figure C for Step 4**

Step 4: Remove the two 10mm screws holding the factory intake box and pull it out of the mounting grommet then out of the vehicle.



INSTALL



Figure D

**Refer to Figure D for Steps 5-6**

Step 5: Transfer the three mounting grommet from the factory air box to the aFe Housing.

Step 6: Slide the filter into the housing and install the T-bolt clamps. Do not tighten yet.



Figure E

**Refer to Figure E for Step 7**

Step 7: Install the aFe filter/housing assembly into the vehicle. Push it on the factory stud and secure it using the two factory 10 mm screws removed at step 4.





Figure F

**Refer to Figure F for Steps 8-10**

Step 8: Remove the MAF sensor from the factory air box. Install it on the aFe tube using factory gasket and supplied m4 screws.

Step 9: Screw the two vent fittings into the aFe tube. Apply some of the furnished threadlocker to guarantee a perfect seal.

Step 10: Install the silicone coupling and the T-bolt clamps on the tube end. Do not tighten clamps yet.

**NOTE:** For models with one vent tube, a plug is provided to seal the un-used opening.

**Figure G****Refer to Figure G for Steps 11-13**

Step 11: Install the aFe tube into the vehicle. Slide the tube first into the filter then the coupling over the throttle body. Align the tube correctly then tighten all clamps. You may need to open the T-bolt clamps by removing the nut completely to install them

Step 12: Reconnect the MAF sensor.

Step 13: Reconnect the vent hoses onto the aluminum fitting.





Figure H

**Refer to Figure H for Steps 14-15**

Step 14: Re-install the factory radiator air outlet.

Step 15: Make sure all clamps and connections are secured. Your installation is now completed.

**NOTE: Check all bolts, clamps and connectors after 200 miles.**

Feel the difference with aFe.

Learn more about performance air intake systems we have.