

advanced FLOW engineering

Rapid Induction Cold Air Intake System

Instruction Manual P/N: 52-10002D / 52-10002R

Make: RAM

Model: 1500

Year: 2019-2021

Engine: V6-3.6L



- Please read the entire instruction manual before proceeding.
- Ensure all components listed are present.
- Ensure you have all necessary tools before proceeding.
- Do not attempt to work on your vehicle when the engine is hot.
- Retain factory parts for future use.

| Label | Qty. | Description | Part Number |
|-------|------|---|--------------|
| A1 | 1 | Air Filter (Pro DRY S) | 21-90108 |
| A2 | 1 | Air Filter (Pro 5R) | 24-90108 |
| B | 1 | Housing | 05-5413020B2 |
| C | 1 | Tube | 05-5210002B1 |
| D | 1 | Coupling, Silicone Reducer: (3-1/4" x 3-1/8")ID x 3"L | 05-01330 |
| E | 1 | Seal, Trim (32" L) | 05-00072 |
| F | 1 | Silicone Hose, 5/8" ID (6" L) | 05-01502 |
| G | 2 | Clamp, #048 | 03-50007 |
| H | 1 | Fitting, 5/8" Barb to CCV | 03-50659 |
| I | 1 | Grommet | 03-50167 |
| J | 1 | Fitting, Air Temperature Sensor | 05-01454 |

Installation will require the following tools:

8mm nut driver, 10mm deep socket and driver, 6" driver extension

Emissions Disclaimer: This product is not currently CARB exempt and is not available for purchase in California or for use on any vehicle registered with the California Department of Motor Vehicles.

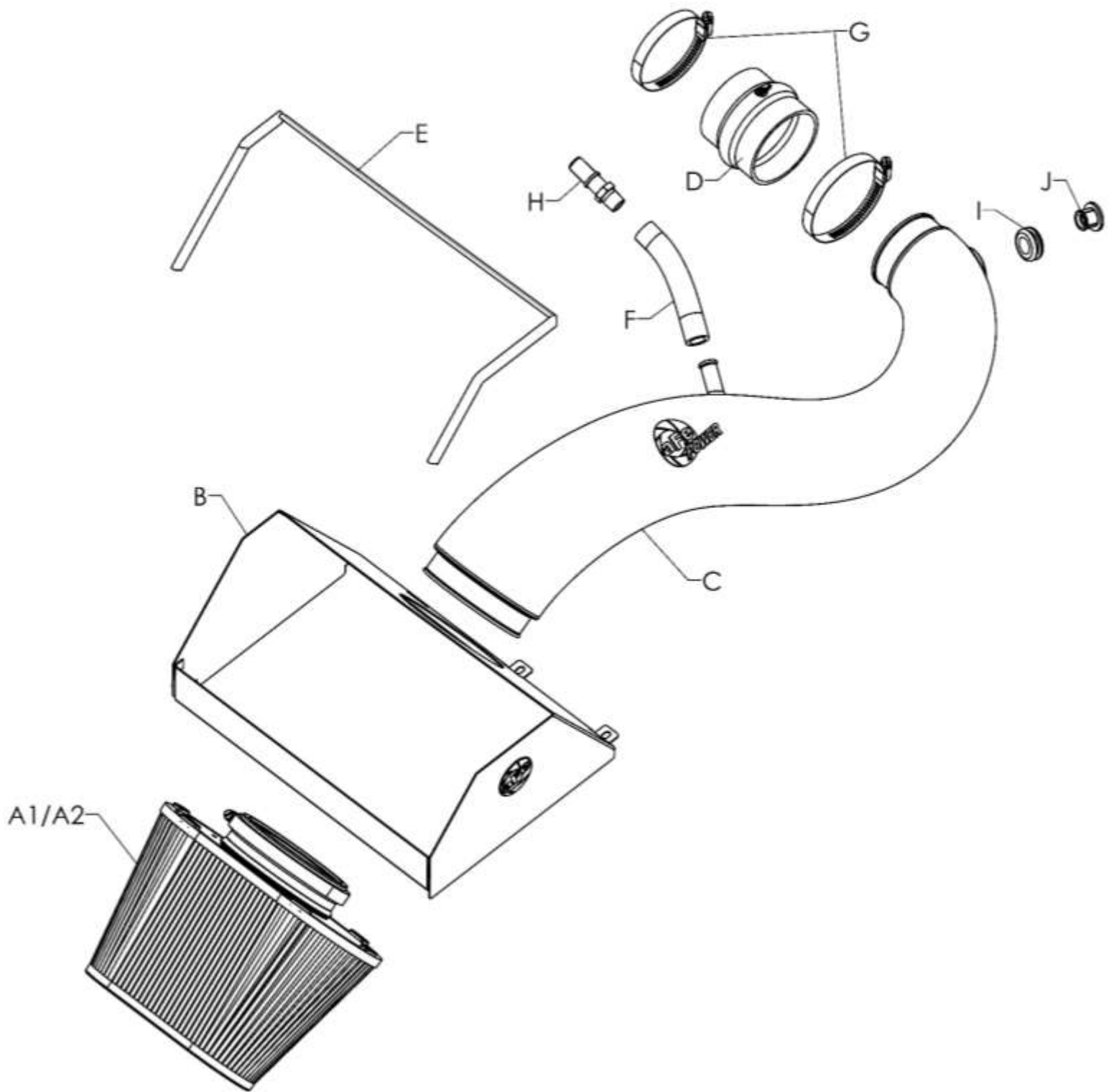



Figure A

Refer to Figure A for Steps 1-5

Step 1: Using an 8mm nut driver, loosen the two clamps ① at the throttle body and factory filter housing.

Step 2: Disconnect the temperature sensor wire harness ②.

Step 3: Using a 10mm deep socket and driver, remove the nut ③ securing the factory intake tube to the valve cover and set aside.

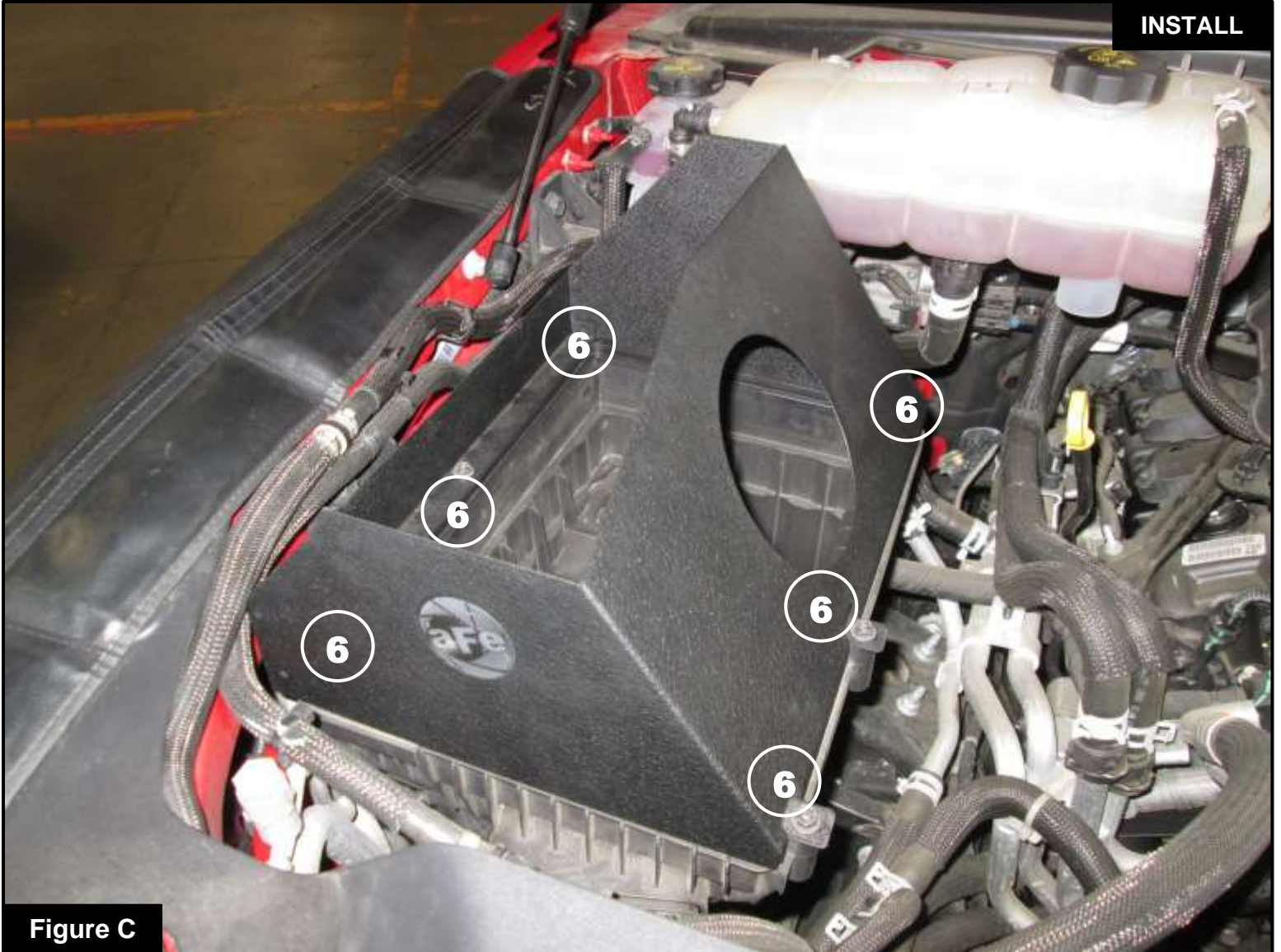
Step 4: Disconnect the quick connect fitting ④ on the back side of the factory intake tube.

Step 5: Remove the factory intake tube from the vehicle.

**Figure B****Refer to Figure B for Steps 6-7**

Step 6: Using a 10mm socket and driver with extension, remove the 6x screws (5) around the factory filter housing, and remove the cover.

Step 7: Remove the factory air filter.

**Figure C****Refer to Figure C for Step 8**

Step 8: Using the 6x screws (6) removed in step #6, secure your aFe POWER filter housing to the top of the factory filter housing and tighten using a 10mm socket with extension.



Figure D

Refer to Figure D for Step 9

Step 9: Install your aFe POWER air filter into the filter housing by removing the clamp, then sliding the filter flange through the opening on the housing and pressing gently until the filter snaps into place. Place the filter clamp loosely on the filter flange when finished.



Refer to Figure E for Step 10

Step 10: Install the supplied silicone reducer coupler (7) and clamp (8) with the smaller end on the throttle body. Tighten the clamp using an 8mm nut driver.



Refer to Figure F for Steps 11-12

Step 11: Install the supplied male quick connect fitting ⑨ into the factory female fitting.

Step 12: Attach the supplied silicone hose ⑩ to the barbed end of the fitting.

**Figure G****Refer to Figure G for Step 13**

Step 13: Install the supplied rubber grommet and fitting ① into your aFe Power intake tube as shown. A small amount of silicone grease may be used to ease the install of the fitting into the grommet.



Figure H

Refer to Figure H for Step 14

Step 14: Transfer the temperature sensor ⑫ from the stock intake tube into the fitting on your aFe Power intake tube.

**Figure I****Refer to Figure I for Step 15-17**

Step 15: Install your aFe POWER air intake tube (13) by sliding the remaining clamp over coupler on the throttle body, then inserting the tube end into the coupler and rotating it down counterclockwise into the filter flange. Tighten all clamps using an 8mm nut driver.

Step 16: Secure the silicone hose installed in step #12 (14) to your aFe POWER intake tube.

Step 17: Reconnect the air temperature sensor wire harness (15) to the sensor installed in the intake tube.

**Figure J****Refer to Figure J for Step 18**

Step 18: Install the supplied seal trim along the top edge of your aFe POWER filter housing cutting slots if necessary to help with bend angles.

**Figure K****Refer to Figure K for Step 20**

Step 20: Check that all clamps are tight and connections are secure. Your installation is now complete.

Thank you for choosing aFe POWER!

NOTE: Check all bolts, clamps, and connectors after 100-200 miles.