

**advanced FLOW engineering**

**Instruction Manual** P/N: 51-73202 / 54-73202

Make: **Ford** Model: **Mustang** Year: **2015-2017** Engine: **V6-3.7L**  
**Momentum GT Air Intake System**



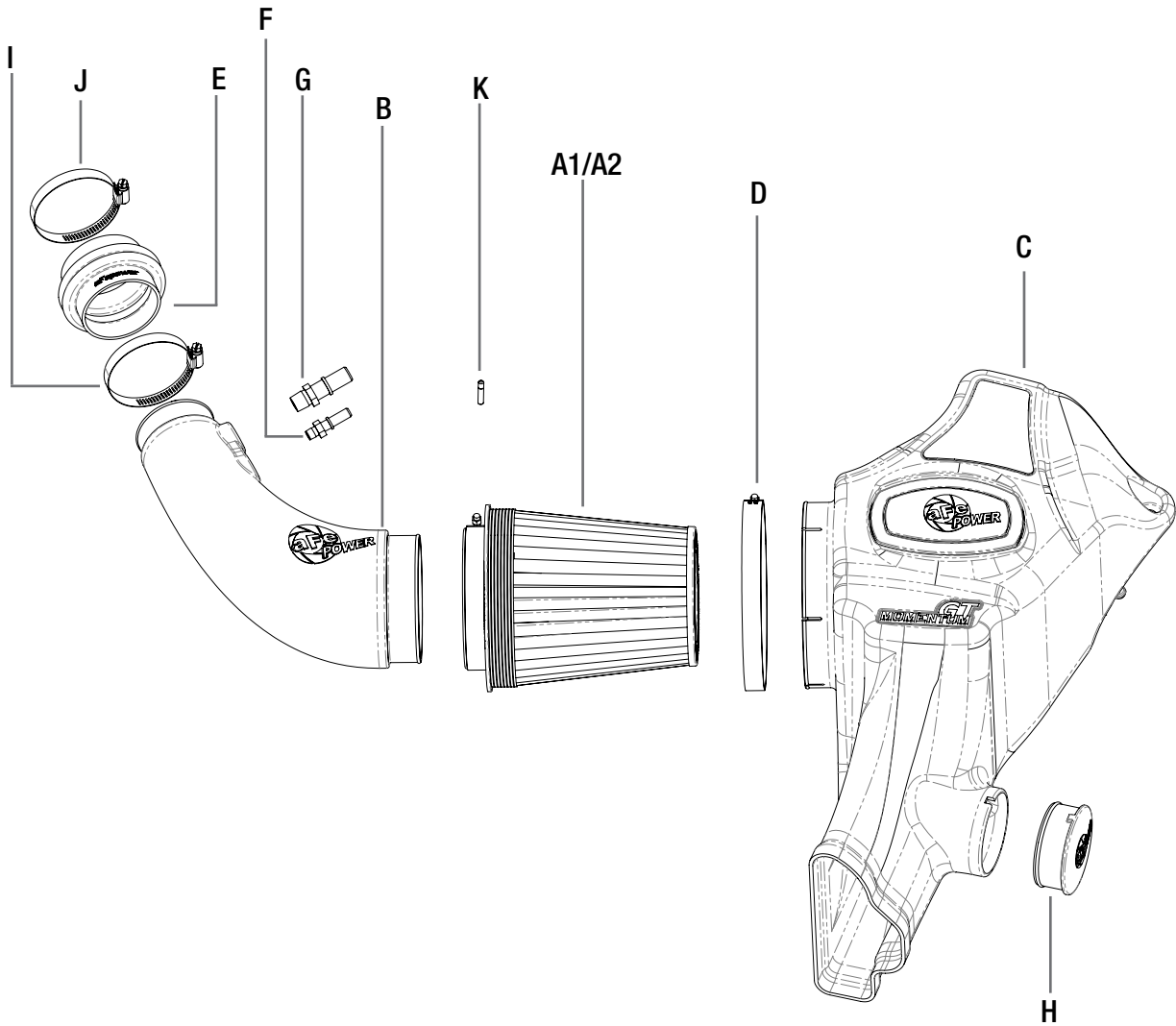
- Please read the entire instruction manual before proceeding.
- Ensure all components listed are present.
- If you are missing any of the components, call customer support.
- Ensure you have all necessary tools before proceeding.
- Do not attempt to work on your vehicle when the engine is hot.

## Retain factory parts for future use.

Label	Qty.	Description	Part Number
A1	1	Air Filter (Pro 5R)	24-91062
A2	1	Air Filter (Pro DRY S)	21-91062
B	1	Tube	05-73202B1
C	1	Housing	05-73203B2
D	1	Clamp, T-bolt	03-50352
E	1	Coupling, Reducer	05-01400
F	1	Fitting, Small	05-01338
G	1	Fitting, Large	05-01339
H	1	Plug, Urethane	05-01361
I	1	Clamp, #048	03-50007
J	1	Clamp, #044	03-50019
K	1	Threadlocker	03-50162

Installation will require the following tools:

8mm nut driver, 7mm nut driver, 10mm deep socket & driver, 11mm deep socket & driver and adjustable wrench.





### **Refer to Figure A for Steps 1-3**

Step 1: Loosen the clamp at the throttle body (7mm nut driver).

Step 2: Unclip the two vent hoses connected to the intake tube. ①

Step 3: Remove the bolt that secures the housing with a 10mm socket and driver. Lift up and remove the entire intake assembly as one unit. ②



Figure B

**Refer to Figure B for Steps 4-5**

Step 4: Remove the metal sleeve and grommet from the stock housing.

Step 5: Remove the locator grommet from the stock housing.





Figure C

**Refer to Figure C for Step 6**

Step 6: Install the locator grommet into the hole in the fender-well.



Figure D

**Refer to Figure D for Step 7**

Step 7: Install the grommet and metal sleeve into the new aFe air box as shown.



Figure E

**Refer to Figure E for Step 8**

Step 8: (Optional) If you would like to use the provided plug for the air box then it is easier to install this now. The plug can be installed/removed from the housing after the intake is installed, but it is easier to install at this time.





Figure F

**Refer to Figure F for Steps 9-10**

Step 9: Install the housing into the vehicle. Make sure that the scoop in the front of the housing lines up with the stock air duct on the vehicle.

Step 10: Secure the housing to the car by reinstalling the factory with a 10mm socket & driver screw to the fender-well.



Figure G

**Refer to Figure G for Steps 11-12**

Step 11: Install the large clamp over the flange on the housing.

Step 12: Install the air filter into the housing and make sure to leave both clamps loose at this time.

**Figure H****Refer to Figure H for Step 13**

Step 13: Install the two provided aluminum adaptors into their respective locations on the new aFe intake tube.

Apply some of the furnished thread locker to guarantee a perfect seal.

**NOTE: Caution: Do NOT over tighten these NPT fittings. There will be a gap between the tube and the fitting when fully tightened.**





**Figure 1**

**Refer to Figure 1 for Steps 14-16**

Step 14: Install the intake tube with the coupler and clamps into the vehicle as shown.

Step 15: Re-connect the two vent fittings to the intake tube.

Step 16: Tighten all of the clamps at this time.



Figure J

**Refer to Figure J for Step 17**

Step 17: Make sure all clamps and connections are secured. Your installation is now completed.

**NOTE: Retighten all connections after approximately 100-200 miles. Place enclosed CARB EO sticker on or near the device on a smooth, clean surface. EO identification label is required to pass the smog inspection.**





Pro DRY S Air Filter



P/N: 21-91062

Pro 5R Air Filter



P/N: 24-91062

Pre-Filter



P/N: 28-10043

Pro DRY S Restore Kit



P/N: 90-59999

Blue Squeeze Restore Kit



P/N: 90-50501

Exhaust Axle-Back



P/N: 49-43085-B (Blk Tip)  
49-43085-P (Pol Tip)

Exhaust Sport Cat-Back



P/N: 49-33087-B (Blk Tip)  
49-33087-P (Pol Tip)

Exhaust Cat-Back



P/N: 49-33072-1B (Blk Tip)  
49-33072-1P (Pol Tip)

Coilovers



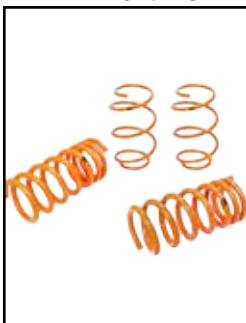
P/N: 430-301001N

Sway Bars



P/N: 440-301001N

Lowering Springs



P/N: 410-301002N

Sprint Booster



P/N: 77-13004 (M/T)  
77-13005 (A/T)