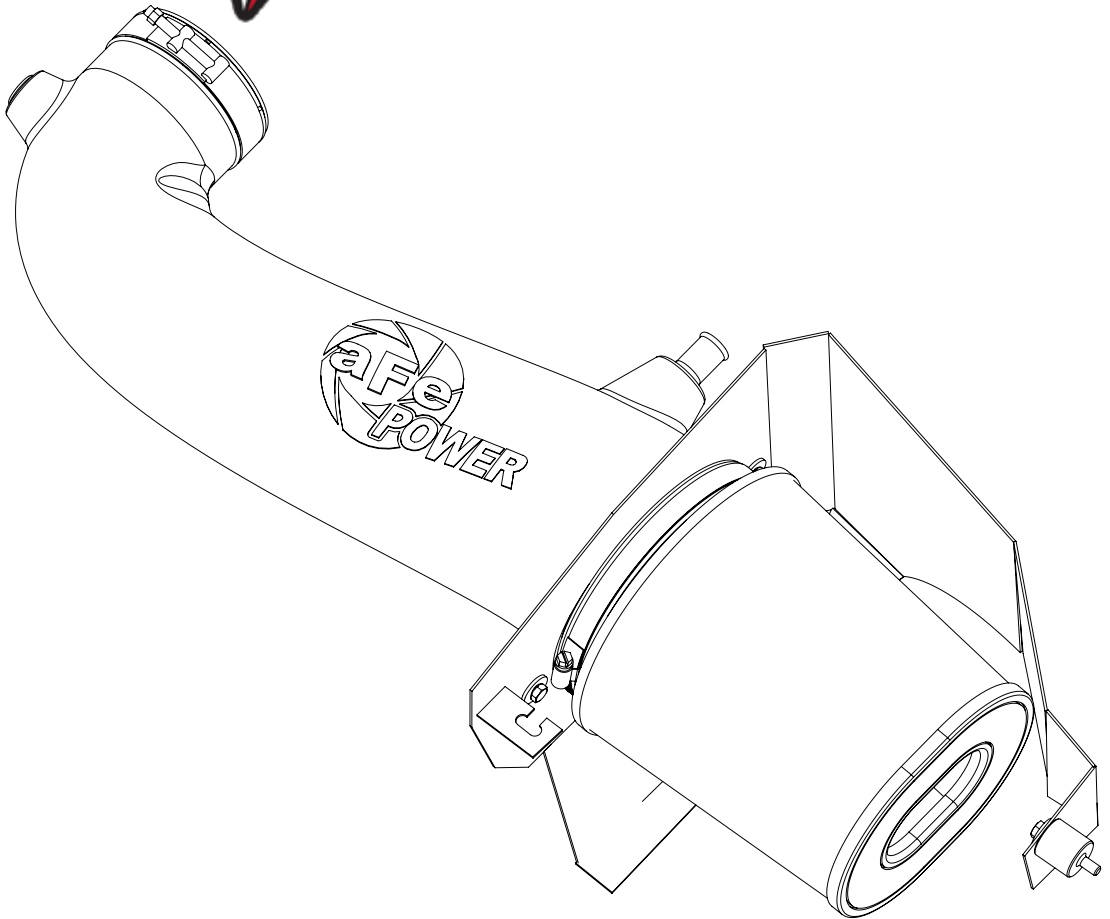


**MAGNUM FORCE**



**advanced FLOW engineering** Stage-2 Air Intake

**Instruction Manual** P/N: 54-12162 / 51-12162

Make: **Dodge**

Model: **Challenger R/T**

Year: **2011-2019**

Engine: **V8-5.7L HEMI**

Make: **Dodge**

Model: **Charger R/T**

Year: **2011-2019**

Engine: **V8-5.7L HEMI**

Make: **Chrysler**

Model: **300C**

Year: **2011-2019**

Engine: **V8-5.7L HEMI**

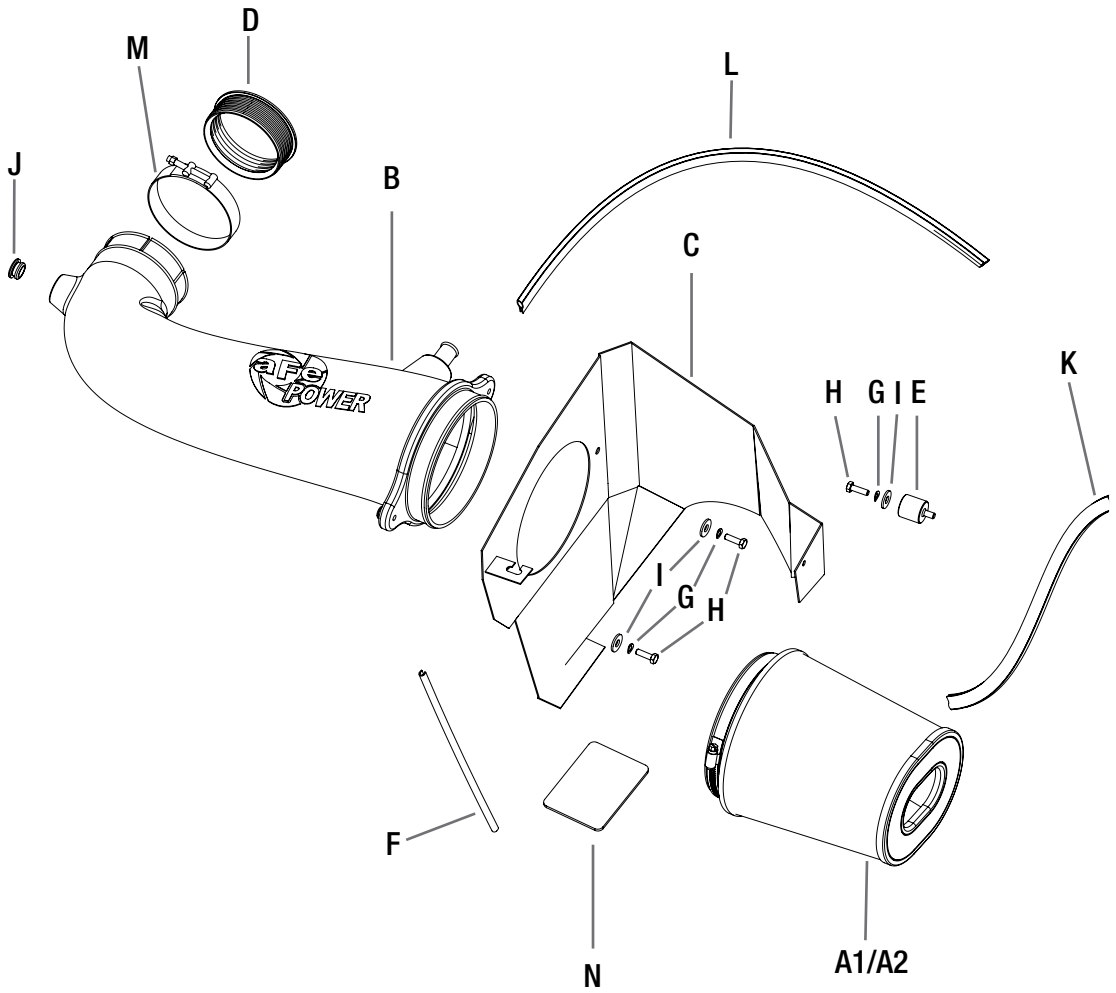


- Please read the entire instruction manual before proceeding.
- Ensure all components listed are present.
- If you are missing any of the components, call customer support.
- Ensure you have all necessary tools before proceeding.
- Do not attempt to work on your vehicle when the engine is hot.
- Disconnect the negative battery terminal before proceeding.
- Retain factory parts for future use.

Label	Qty.	Description	Part Number
A1	1	Air Filter (Pro 5R)	24-91053
A2	1	Air Filter (Pro DRY S)	21-91053
B	1	Tube	05-12162B1
C	1	Housing	05-12172B2
D	1	Silicone Coupling	05-01193
E	1	Isolation Mount M6	03-50206
F	1	Trim Seal (12.5 Inches)	05-00149
G	3	Lock Washer M6	03-50071
H	3	Screw Hex M6	03-50052
I	3	Flat Washer M6	03-50070
J	1	Grommet	03-50033
K	1	Seal Trim (16.5 Inches)	05-00072
L	1	Seal Trim (25 Inches)	05-00072
M	1	T-bolt Clamp	03-50265
N	1	Isolation Pad	03-50196

**Installation will require the following tools:**

8mm Nut Driver (Or Flat Head Screw Driver) 10mm Socket, 10mm Wrench.



**Figure A****Refer to Figure A for step 1-5**

Step 1: Remove the engine cover ① and disconnect the crank case hose ②

Step 2: Remove the 8mm bolt off the OE air box ③.

Step 3: Loosen the clamp off the OE intake tube ④.

Step 4: Unplug the temp sensor ⑤.

Step 5: Remove the OE airbox out of the vehicle.



Figure B

**Refer to Figure B for steps 6-7**

Step 6: Remove the 10mm bolt from the fender side ⑥.

Step 7: Install the furnished isolation mount into the hole from step 6.



**Refer to Figure C for steps 8-11**

Step 8: Remove the OE grommet and metal insert from the OE housing (7).

Step 9: Install the OE grommet and metal insert onto the aFe housing (8).

Step 10: Install the furnished seal trim onto the outer edge of the aFe housing (9) and isolation pad.

Step 11: Install the aFe housing into the vehicle.





Figure D

**Refer to Figure D for steps 12-15**

Step 12: Install the furnished silicone coupling onto the throttle body (10).

Step 13: Install the furnished grommet onto the aFe intake tube and place the T-bolt clamp onto the throttle body side of the aFe intake tube.

Step 14: Remove temp sensor from the OE intake tube and install it into the aFe tube (11) with provided grommet installed in step 13.

Step 15: Install the aFe intake tube into the vehicle (12) and secure it to the housing using the furnished hardware.

**Figure E****Refer to Figure E for steps 16-19**

Step 16: Install the OE crank case hose onto the aFe intake tube (13) and reconnect the temp sensor (Note: The crank case hole in the tube is 1/8").

Step 17: Install the air filter onto the aFe intake tube with the furnished clamp.

Step 18: Tighten all connections and reinstall the engine cover removed in step 4.

Step 19. Your installation is now complete!

**NOTE: Retighten all connections after approximately 100-200 miles.**

**Place enclosed CARB EO sticker on or near the device on a smooth, clean surface.**

**EO identification label is required to pass the smog inspection.**





Pro DRY S Air Filter



P/N: 21-91053

Pro 5R Air Filter



P/N: 24-91053

Pro DRY S Restore Kit



P/N: 90-59999

Blue Squeeze Restore Kit



P/N: 90-50501

Pre-Filter



P/N: 28-10043

Throttle Body Spacer



P/N: 46-32007

Sprint Booster V3



P/N: 77-12009

Shorty Headers



P/N: 48-32021

Cat-Back Exhaust System  
Challenger Only!



P/N: 49-32060 ('15-'16)  
49-32061 ('17-'18)

Cat-Back Exhaust System



P/N: 49-42017 (Challenger)  
2009-2014 Only!

Long Tube Headers +  
Connection Pipes



P/N: 48-32011-YC (Street)  
48-32011-YC (Race)

Exhaust Connection Pipes



P/N: 48-32022-RC (Street)  
48-32022-RN (Race)

Check out the collection of performance air intake systems we offer.