

Intake Kit Installation Instructions: 1999-2003 Ford F-Series Super Duty/Excursion V8-7.3L (td)



Kit Part #	51/54/75-10192 75-10192-0V	Tools Required:	Part List:	Bonus Part List: (75-10192-0V only)
Make:	Ford	8mm socket	4 Washer, split lock M6	1 Air Filter (Pro Dry S™ 21-90020)
Model:		5/16" nut driver	4 Washer, flat M6	1 Restore Kit, gold squeeze
Year:		13mm socket	2 Washer, split lock 5/16"	1 Pre-filter
Engine:		10mm socket & wrench	1 Grommet-air temp sensor	
F-250	'99.5-'03	5mm Allen wrench	1 Grommet-filter minder sensor wire	
F-350	'99.5-'03	Ratchet and extension	1 Grommet-filter minder on intake tube	
F-450	'00-'03		2 Clamps, #072	
F-550	'01-'03		1 Trim seal, 32"	
Excursion	'00-'03		1 Coupler, 4 x 4 x 3.5	
			1 Battery, pad urethane	
			1 Air filter (Replacement part # 24-91018) or Pro-GUARD 7™ 72- 90020 or Pro Dry S™ 21-90020	
			1 Housing, filter	
			1 Bracket, battery hold down	
			1 Intake tube	
			2 Screw, hex, 5/16-18x8"	
			2 Screw, button head, m 8-1.25 x 25mm	
			4 Screw, hex, M6 x 25mm	
			4 Nut, hex, M6	

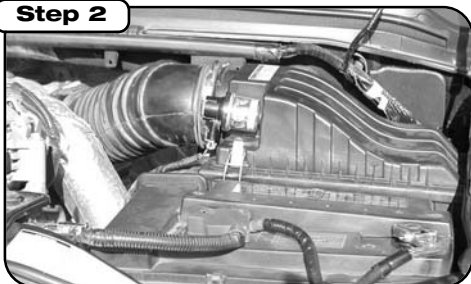


Step 1



Complete kit with parts.

Step 2



Complete stock intake.

Step 3



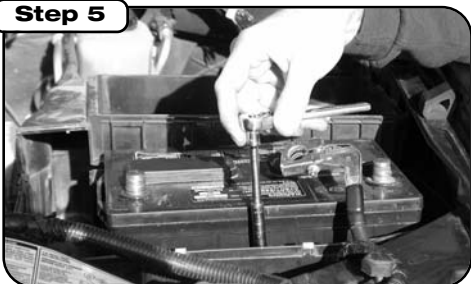
Loosen clamp from stock intake tube (at engine side), disconnect plug to filter minder and undo clips to remove top of OE air box.

Step 4



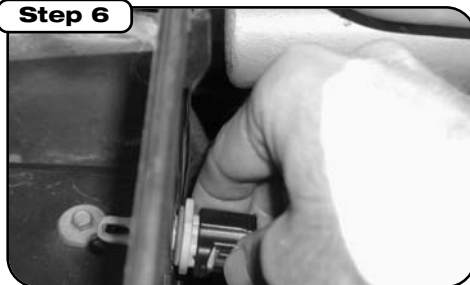
Remove battery terminals then remove battery lid. Wrap and isolate terminal or disconnect both batteries.

Step 5



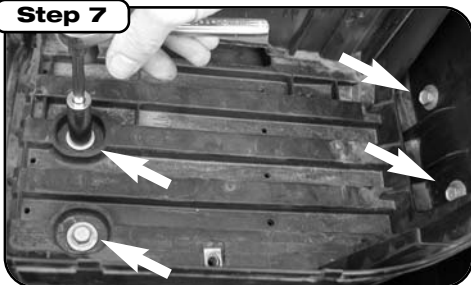
Remove battery hold down clamp from OE battery tray.

Step 6



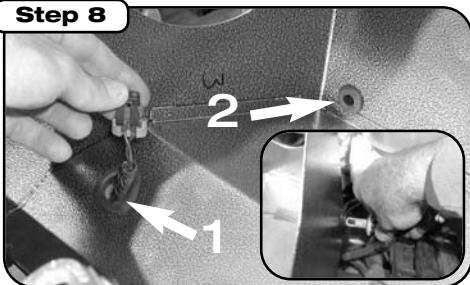
Twist and remove temperature sensor from air box. Being careful not to damage sensor.

Step 7



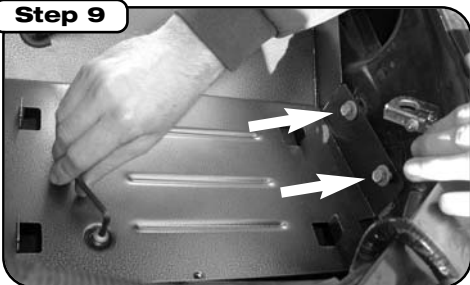
Remove four 13mm bolts as shown to take out OE air box.

Step 8



Setting intake housing, into the vehicle, install the two grommets supplied. Route wire for filter minder through the larger hole (1) on the bottom of the housing for reconnecting to filter minder in Step 12. Insert temp. sensor into hole (2) on side of intake housing.

Step 9



Once intake housing is set in position, re use two OE 13mm bolts on the side of the inner fender and use the two supplied button head on the base of the intake housing. Tighten with 5mm L-key.

Step 10



Install battery pad to housing. Place battery into intake housing using supplied clamp and two 8" long hex head bolts and locking washers. (DO NOT OVER TIGHTEN).

Step 11



Attach coupler to intake tube and insert tube through housing. Rotate tube to line up flange holes with holes on housing. Using supplied hardware, fasten securely and tighten clamp on engine side of intake tube.

Step 12



Place grommet into hole of intake tube. Insert filter minder into location and reconnect wire.

Step 13



Install trim seal on housing.

Step 14



Install filter to intake tube and tighten clamp.

Step 15



Place enclosed CARB EO sticker on a clean/smooth surface on or near the intake system. EO identification label is required in passing Smog Check inspection. Make sure all hoses and clamps are tight and that all electrical components are secure.

Note: Filter Cleaning and Re-oiling: When cleaning your aFe filter, be sure to use only aFe's "Restore Kit" (aFe P/N: 90-50001 blue oil aerosol, or aFe P/N: 90-50501 blue squeeze bottle oil or aFe P/N: 90-50000 gold oil aerosol, or aFe P/N: 90-50500 gold squeeze bottle oil). Filter Replacement: Magnum FLOW PN: 24-91018 (black w/blue media) or ProGUARD 7™ PN: 72-90020. Pro Dry S™ P/N: 21-90020 (black w/white media). Pro Dry S™ cleaning: see cleaning instruction sheet 06-00074.