



## Installation Instructions

**Part #: 51/54/75-10152**

**Make: JEEP**

Model	Year	Engine
Wrangler YJ	'91-'95	I6-4.0L

**Tools Required:**

- 5/16" Nut Driver or Flat Screwdriver
- 7/16" Socket Ratchet
- 3" Extension

**Parts Included:**

- 1 Air Filter 24-30018 **Pro 5R™**
- 1 **Pro Dry S™** 21-30018, 72-30018 **Pro-GUARD 7™**
- 1 Coupler, straight
- 1 Coupler, single hump
- 1 Housing
- 1 Tube w/vent, rotomolded black
- 1 3/4" Trim Seal @ 28"L
- 1 7/16" Trim seal @ 10"L
- 2 Clamps, hump coupler #052
- 2 Clamps, straight coupler #048
- 1 Rubber Grommet
- 1 Hose 1/2" @ 10"L
- 1 Hose 3/8" @ 24"L
- 1 Tee, vent 1/2"
- 1 Grommet, air temp sensor
- 1 Cap, 1/2"

**Instructions:**

1. Remove jack and mounting bracket(s) from fender well.
2. Remove strut rod.
3. Disconnect charcoal evap line & remove stock air box and duct.
4. Install edge trim on the aFe heat shield. The longer piece is notched and goes along the top edge & curves down to meet the fender. The notch goes in the top corner with the shorter segment towards the radiator & the other end down towards the fender. The remaining short trim is installed on the bottom straight edge against the inner fender.
5. Install aFe heat shield using the two upper radiator mounting bolts and jack mount bolt on fender well (**Photo A & B**).
6. Install straight coupler to Magnum Force Intake tube using appropriate hose clamps (provided in kit) and fasten to throttle body.
7. Install hump coupler to Magnum Force Intake tube using appropriate hose clamps (provided in kit) and fasten to heat shield (**Photo C**).
8. Install rubber grommet to hole in heat shield; slide strut rod through rubber grommet and fasten strut rod on both ends.
9. Install aFe filter to heat shield (as shown).
10. Install 1/2" vent hose between valve cover fitting and intake tube. Also cut hose & install vent tee in line. Install 3/8 vent hose (provided) from charcoal canister plastic line and route to vent tee (**Photo D & E**).

Place enclosed CARB EO sticker on a clean/smooth surface on or near the intake system. EO identification label is required in passing Smog Check inspection. Make sure all hoses and clamps are tight and that all electrical components are secure. Re-check and after a few hours of operation.

**Note:** Installation of this kit will require the relocation/elimination of the underhood fenderwell mounted jack and bracket.

**Congratulations, your installation should look like this when successfully completed.**

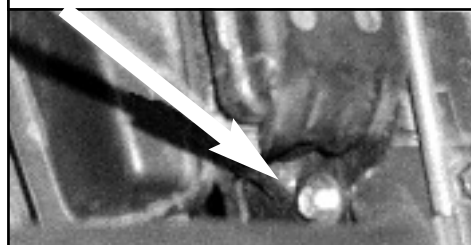


Photo A



Photo B



Photo C



Photo D

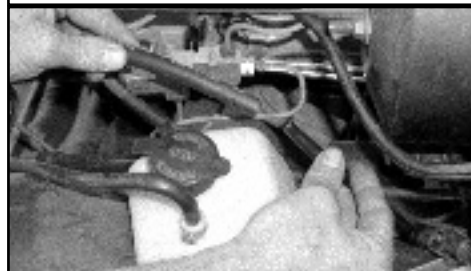


Photo E

**Note:** Filter Cleaning and Re-oiling: When cleaning your aFe filter, use the "Restore Kit" aFe PN 90-50001 (aerosol blue oil) or PN 90-50501 (squeeze bottle gold oil). For Filter Replacement: PN 24-30018 (black w/ blue media). **Pro Dry S™** P/N: 21-30018 (black w/white media) **Pro Dry S™** cleaning: see cleaning instruction sheet 06-00074.

06-80014b