

MOMENTUM **HD**

advanced FLOW engineering Momentum HD Cold Air Intake System

Instruction Manual P/N: 50-70056D / 50-70056T

Make: Chevrolet Model: Silverado 2500HD/3500HD Year: 2020-2021 Engine: V8-6.6L (td) L5P
Make: GMC Model: Sierra 2500HD/3500HD Year: 2020-2021 Engine: V8-6.6L (td) L5P



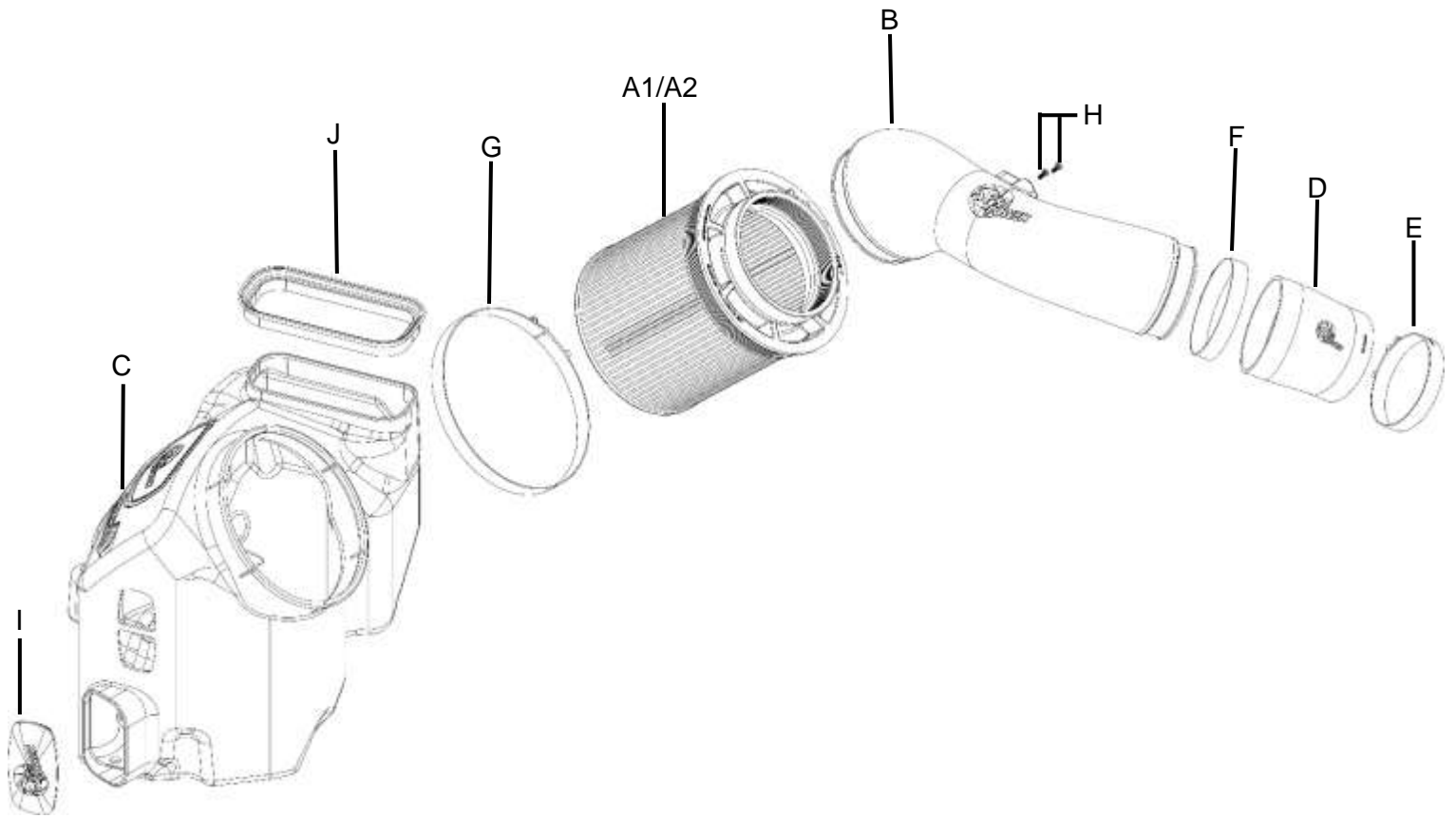
- Please read the entire instruction manual before proceeding.
- Ensure all components listed are present.
- For technical support please.
- Ensure you have all necessary tools before proceeding.
- Do not attempt to work on your vehicle when the engine is hot.
- Retain factory parts for future use.

Label	Qty.	Description	Part Number
A1	1	Air Filter (Pro 10R)	20-91147
A2	1	Air Filter (Pro DRY S)	21-91147
B	1	Tube	05-5070056B1
C	1	Housing	05-5070056B2
D	1	Coupling, Silicone Elbow Rdr: 100mm x 108mm 17 Deg	05-01420
E	1	Clamp, T-bolt (4-1/16" - 4-3/8")	03-50262
F	1	Clamp, T-bolt (4-5/16" - 4-5/8")	03-50499
G	1	Clamp, T-bolt (8-5/16" - 8-5/8")	03-50267
H	2	Screw, Torx: M4x8mm	03-50491
I	1	Plug, Silicone	05-01429
J	1	Seal, Inlet	05-01562

Installation will require the following tools:

T20 Torx driver, 8mm nut driver, 10mm, 11mm & 13mm deep sockets and driver, 10mm wrench

Emissions Disclaimer: This product is not currently CARB exempt and is not available for purchase in California or for use on any vehicle registered with the California Department of Motor Vehicles.

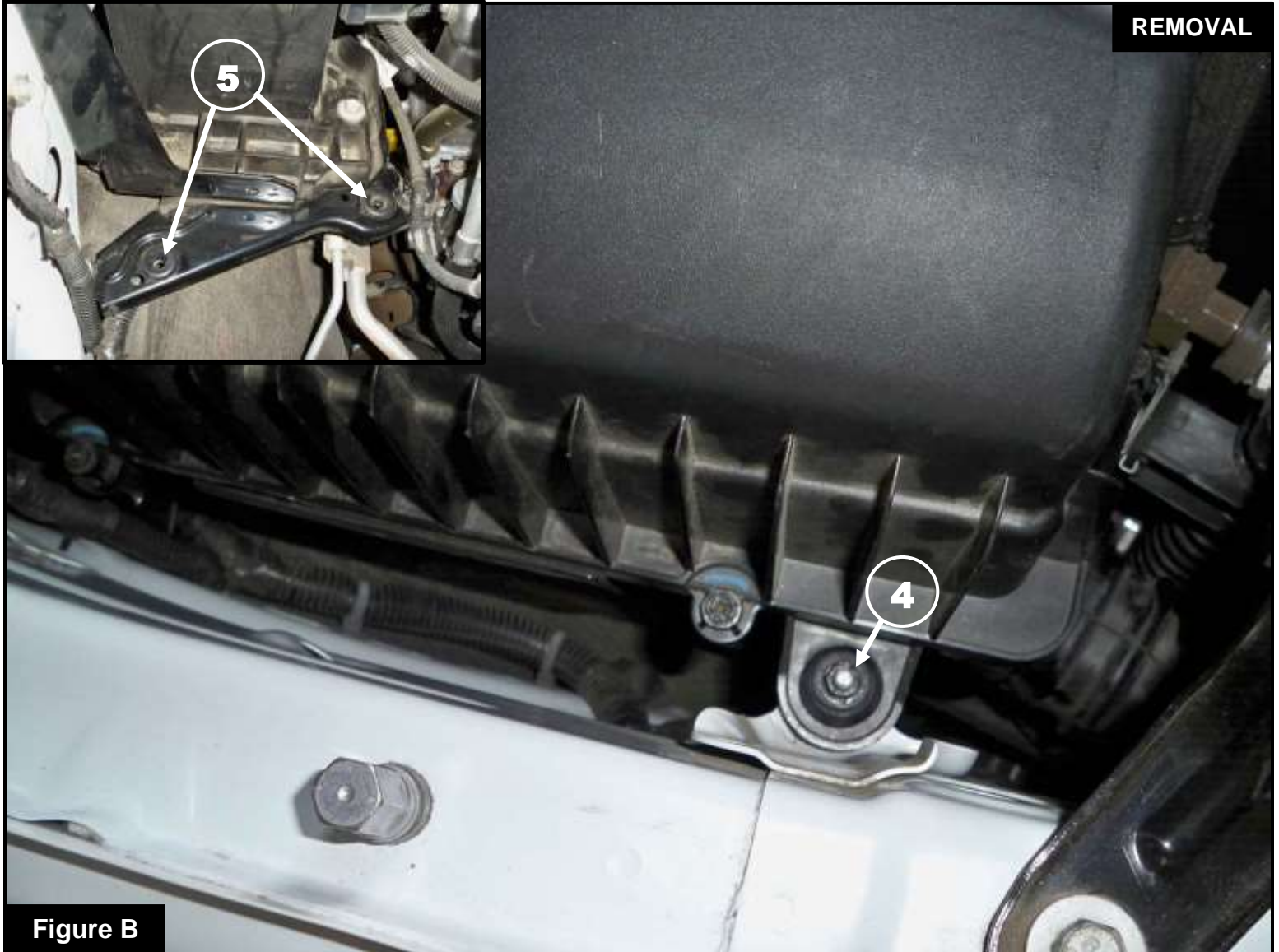


**Figure A****Refer to Figure A for Steps 1-3**

Step 1: Disconnect the MAF sensor ①.

Step 2: Using an 8mm nut driver, loosen the hose clamps ② at the factory airbox and the turbo coupling.

Step 3: Remove the factory intake tube ③.

**Figure B****Refer to Figure B for Steps 4-5**

Step 4: Using a 10mm deep socket and driver, remove the nut (4) holding the factory airbox to the fender and set the nut aside for later use.

Step 5: Remove the factory airbox by pulling it straight up from its mounting grommets. If the grommets (5) are pulled out with the factory airbox, remove them and put them back on the bracket holes.

REMOVAL



Figure C

Refer to Figure C for Step 6

Step 6: Remove the metal insert and grommet ⑥ from the factory airbox and install them into the aFe POWER housing.



Figure D

Refer to Figure D for Steps 7-9

Step 7: Install the aFe POWER housing on to vehicle. Make sure the mounting pins are fully seated in the mounting grommets.

Step 8: From the inside of the aFe POWER housing, use a 10mm wrench to reinstall and tighten the nut (7) removed in Step 4.

Step 9: Make sure the air inlet scoop (8) is inside the front opening of the aFe POWER housing.



Figure E

Refer to Figure E for Steps 10-11

Step 10: Slide the large T-Bolt clamp ⑨ over the air filter opening on the aFe POWER housing.

Step 11: Slide the aFe POWER filter with clamp into the housing. Do not tighten the clamps.


Figure F

Refer to Figure F for Step 12

Step 12: If you wish to remove the resonator (10), loosen the clamp (11) at the turbo inlet with an 8mm nut driver. Using a 13mm deep socket, extension and driver, remove the nut (12) holding the resonator. Remove the resonator with the stock coupling.

Note: If you wish to keep the resonator skip to step 14 and reuse the factory coupling.

**Figure G****Refer to Figure G for Step 13**

Step 13: If the resonator is removed, install the supplied TB437SS clamp (13), coupling (14) and TB462SS clamp (15). Do not tighten the clamps.

**Figure H****Refer to Figure H for Step 14**

Step 14: Using a T20 Torx driver, remove the MAF sensor (16) from the factory airbox and install it on the aFe POWER intake tube using the supplied M4 screws.

**Figure I****Refer to Figure I for Steps 15-16**

Step 15: Install the aFe POWER intake tube into the vehicle. Slide the tube into the coupling first, then into the air filter.

Step 16: Align the coupling, intake tube and clamps correctly, then using a 11mm deep socket and driver tighten all the clamps ⑰.

**Figure J****Refer to Figure J for Steps 17-20**

Step 17: Reconnect the MAF sensor (18).

Step 18: Install the inlet seal (19) to the top inlet of the aFe POWER housing.

Step 19: Use the provided plug (20) to close the additional air inlet if you want to completely seal the housing. Best performance gain is obtained by having more air flow (no plug).

Step 20: Check all the components are tight and secure. Your installation is now complete. Thank you for choosing aFe POWER!

NOTE: Check all bolts, clamps, and connectors after 100-200 miles.



Pro DRY S Air Filter



P/N: 21-91147

Pro 10R Air Filter



P/N: 20-91147

Pro DRY S Restore Kit



P/N: 90-59999

Blue Squeeze Restore Kit



P/N: 90-50501

Pre-Filter



P/N: 28-10273

aFe Fender Cover



P/N: 40-10230

Pro GUARD Fuel Filter



P/N: 44-FF023

Rear Differential Cover



P/N: 46-71260B

SCORCHER HD



P/N: 77-44010

SCORCHER BLUE



P/N 77-84010

Flashlight LED USB



P/N 40-10202

Magnetic Folding Flashlight



P/N 40-10229