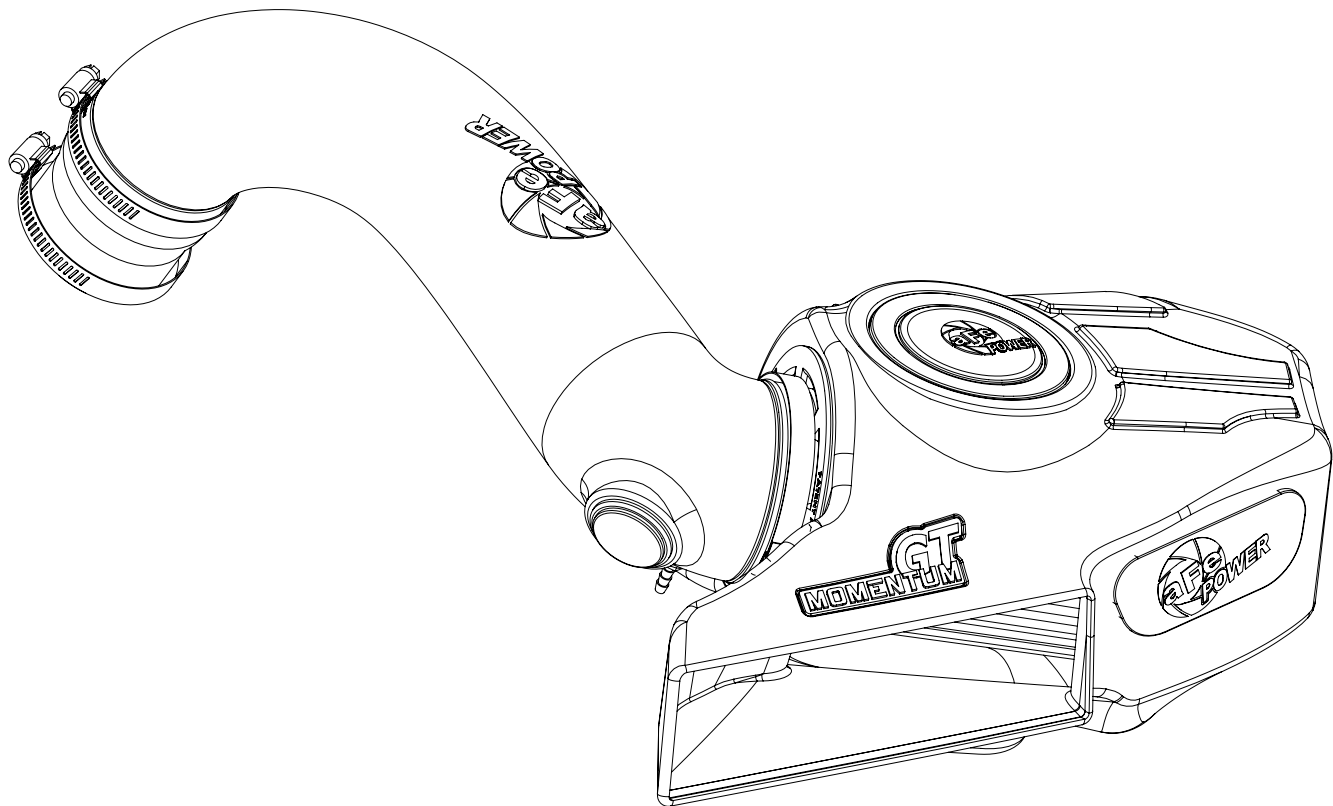


GT
MOMENTUM™



advanced FLOW engineering Momentum GT Cold Air Intake System

Instruction Manual P/N: 50-70036D / 50-70036R

Make: Audi	Model: A3	Year: 2015-2018	Engine: L4-1.8L Turbo
Make: Audi	Model: A3	Year: 2015-2019	Engine: L4-2.0L Turbo
Make: Audi	Model: S3	Year: 2015-2019	Engine: L4-2.0L Turbo
Make: VW	Model: GTI / Golf R	Year: 2015-2019	Engine: L4-1.8L Turbo /2.0L Turbo



- Please read the entire instruction manual before proceeding.
- Ensure all components listed are present.
- If you are missing any of the components.
- Ensure you have all necessary tools before proceeding.
- Do not attempt to work on your vehicle when the engine is hot.

Retain factory parts for future use.

Label	Qty.	Description	Part Number
A1	1	Air Filter (Pro 5R)	24-91103
A2	1	Air Filter (Pro DRY S)	21-91103
B	1	Tube	05-76403B1
C	1	Housing	05-5070036B2
D	1	Cap	03-50179
E	1	Coupling, Reducer	05-01196
F	1	Fitting, Smog Pump	05-01096
G	1	Grommet	03-50139
H	1	Clamp #048	03-50007
I	1	Clamp #044	03-50019
J	3	Grommet, Rubber	03-50167
K	1	Nipple, Brass Hose	03-50191
L	1	Plug, Air Box	05-00937

Installation will require the following tools:

8mm nut driver, 1/4" Socket Wrench, 13mm deep socket and T25 Torx driver.

Recommended: Silicone Lubricant

Note: Legal in California for use on race vehicles only. The use of this device on vehicles used on public streets or highways is strictly prohibited in California and others states that have adopted California emission regulations.

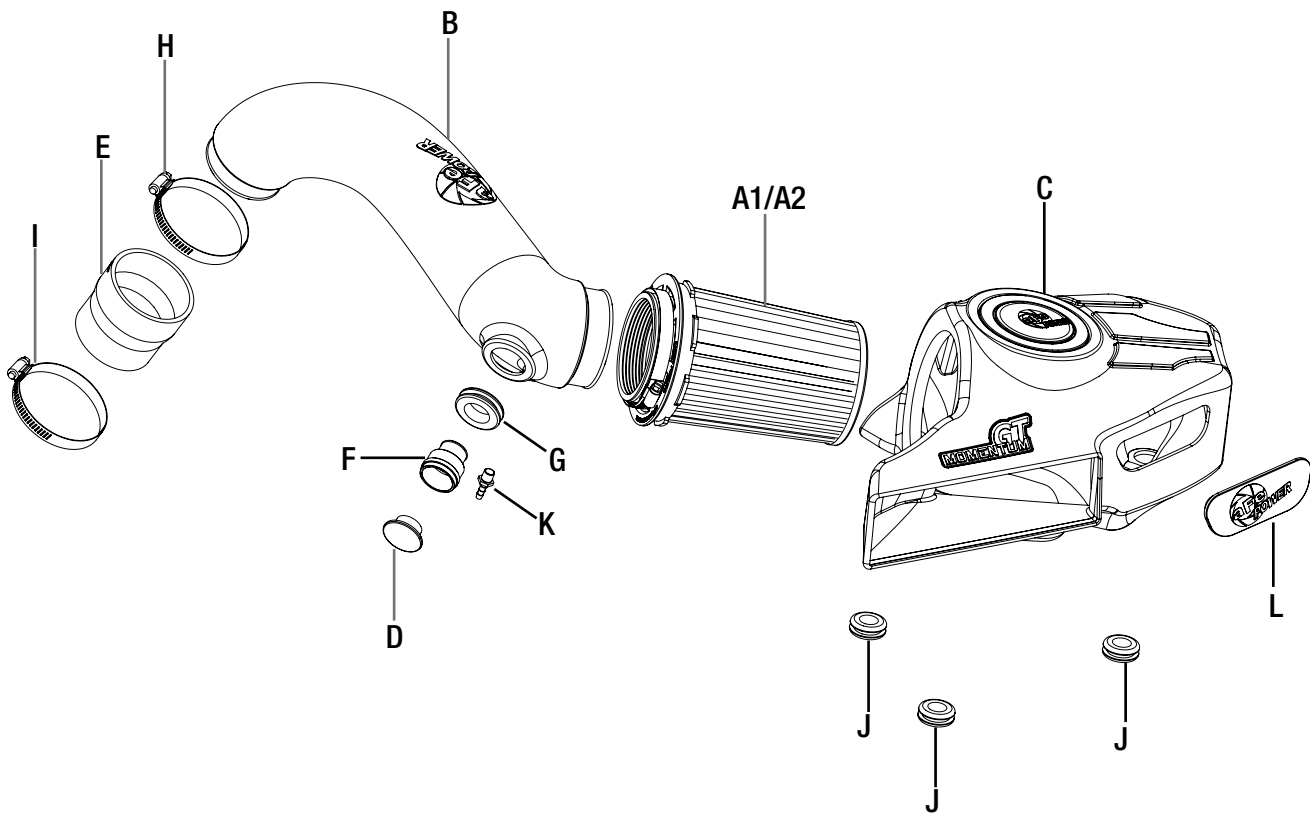




Figure A

Refer to Figure A for Steps 1-4

Step 1: Disconnect the smog pump connector (1) from the factory intake housing. (If applicable)

Step 2: Disconnect the rubber crank case breather tube (2) from the factory intake housing.

Step 3: Loosen the clamp (3) connecting the factory intake tube to the turbo.

Step 4: Carefully lift and remove the entire factory intake assembly.

NOTE: Alternately, the top half of the factory air box can be removed with a T25 Torx screwdriver.

**Figure B****Refer to Figure B for Step 5**

Step 5: Install the three (x3) provided rubber grommets (4) on the bottom of the aFe POWER air box as shown.

**Figure C****Refer to Figure C for Steps 6-7**

Step 6: Install the grommet (5). Use the plastic block off cap (6). (For vehicles not equipped w/ a smog pump) or the metal fitting (7) for vehicles that are equipped w/ a smog pump).

Step 7. Install the 3/16" brass fitting into the tube (8).

**Figure D****Refer to Figure D for Steps 8-9**

Step 8: Insert the tube into the filter and tighten the clamp at this time.

Step 9: Then insert the tube & filter both into the housing by pressing while rotating until you feel and/or hear all six (x6) of the tabs seat themselves into the flange.



Figure E

Refer to Figure E for Steps 10-12

Step 10: Install the provided reducer coupling (9) and smaller clamp (#044) (10) onto the turbo inlet pipe.

Step 11: Tighten clamp at this time.

Step 12: Slip the (#048) clamp (11) onto the coupling, but do not tighten at this time.

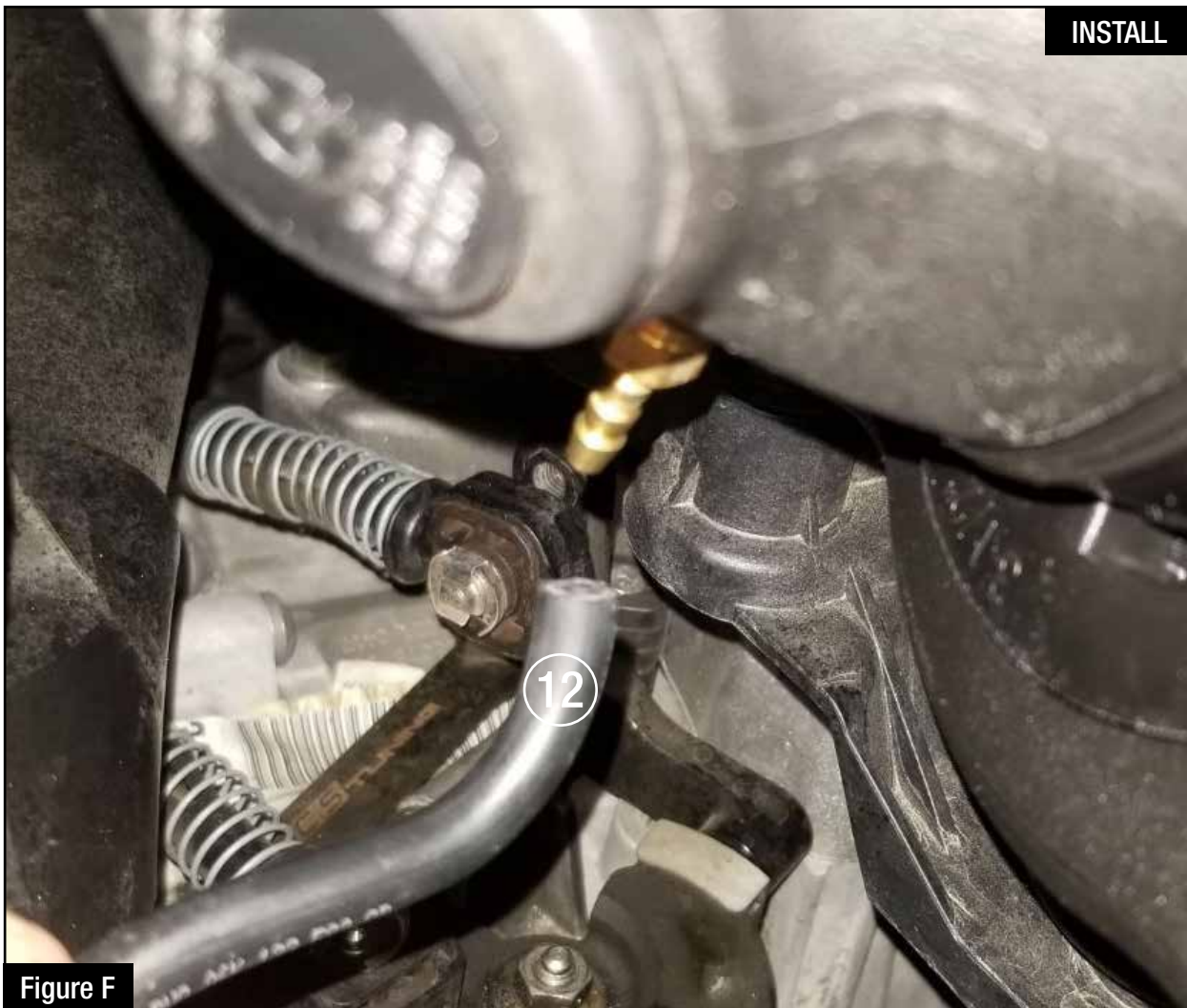


Figure F

Refer to Figure F for Step 13

Step 13: Place the entire intake assembly in the engine as shown and re-attach the rubber breather hose (12).

NOTE: A small amount of lubricant on the brass fitting may help the rubber hose to slip over the brass fitting.



Refer to Figure G for Steps 14-18

Step 14: Lower the intake assembly over the three (x3) factory mounting locations and firmly press down on the air box.

Step 15: Next, rotate the tube down into the coupling over the turbo inlet pipe.

Step 16: Align tube where it does not touch anything and tighten the (#048) clamp (13).

Step 17: Connect the smog pump hose to the aluminum fitting (14).

Step 18: Confirm all connections are secure and clamps tightened. Your installation is now complete.

Thank you for choosing aFe POWER!

NOTE: Check all bolts, clamps, and connectors after 100-200 miles.

Learn more about performance air intake systems we have.