



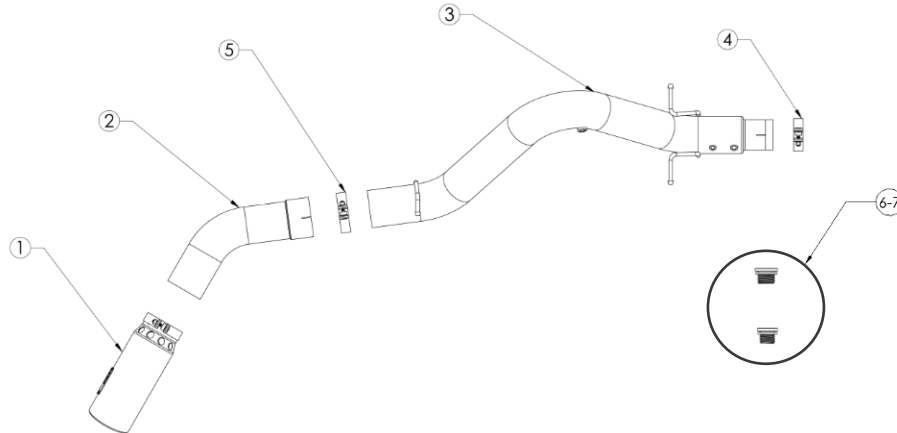
INSTALLATION INSTRUCTIONS

DPF-Back Exhaust

MAKE: GM
 MODEL: Silverado HD/Sierra HD
 YEAR: 2020
 ENGINE: V8-6.6L (td) Duramax (L5P)

49-44125-P
 49-44125-B

See Table on Page 2 For Fitment



| Item | Description | Part Number | Quantity |
|------|---|---------------|----------|
| 1 | EXH Tip 5 In x 6 Out x 16L Sin, Ang, I/C, Pol | 49T50601-P161 | 1 |
| 1 | EXH Tip 5 In x 6 Out x 16L I/C Bolt-On Blk | 49T50601-B161 | 1 |
| 2 | S/A Tail Pipe Turnout | 05-44769 | 1 |
| 3 | S/A Over Axle | 05-144981 | 1 |
| 4 | Clamp, Band: 4" (SS) | 05-41172 | 1 |
| 5 | Clamp, Band: 5" (SS) | 05-41173 | 1 |
| 6 | Plug Threaded: M16 x 1.5 | 05-46019 | 1 |
| 7 | Plug Threaded: M14 x 1.5 | 05-46020 | 1 |

aFe POWER recommends professional installation on this product. Thoroughly inspect the aFe POWER exhaust system to make sure there is no damage from shipping (if damage is noted, immediately contact aFe POWER customer service). Allow time for your vehicle to cool down prior to installation. When working on your vehicle proceed with caution. Wear protective safety equipment; eye goggles and gloves to ensure a safe installation.

Install band clamps to proper torque specifications of 40-45 ft-lb.





INSTALLATION INSTRUCTIONS

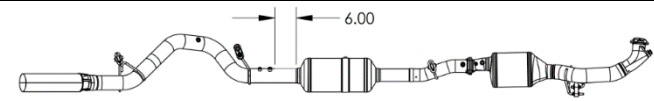
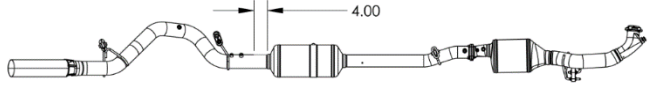
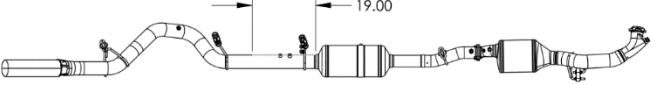
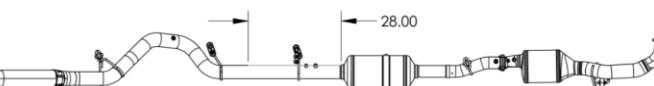
DPF-Back Exhaust

MAKE: GM
MODEL: Silverado HD/Sierra HD
YEAR: 2020
ENGINE: V8-6.6L (td) Duramax (L5P)

49-44125-P
 49-44125-B

See Table on Page 2 For Fitment

- (Read instructions prior to installation.)** It is recommended to not fully tighten the exhaust until it has been fully installed. Leave loose for adjustability.
- Secure vehicle on jack stands (refer to your manual for specified jack stand positions).
- For faster installation, spread out the parts of the exhaust alongside your vehicle as shown in the diagram above.
- Secure the stock exhaust with jack/stands.
- Remove NOX Sensor. If your install is for a Crew/Cab Long Bed 172" wheelbase or Double/Cab Long Bed 162.48" wheelbase do not remove the EGT sensor or the EPD sensor. All other wheelbase and cab configurations must remove all sensors from tailpipe section.
- Using a visible ink, measure the correct inches indicated below. From the rear weld line of the DPF (Diesel Particulate Filter) place a mark as shown in the table below.

| CAB Configuration | Wheelbase | Cut Lengths | Image |
|----------------------|-----------|-------------|--|
| Double/Cab Short-Bed | 149.4 | 6" |  |
| Crew/Cab Short-Bed | 158.9" | 4" |  |
| Double/Cab Long-Bed | 162.4" | 19" |  |
| Crew/Cab Long-Bed | 172" | 28" |  |

- Cutting will be done under the vehicle, make sure support stands are supporting weight before cutting stock exhaust. Remove the rear tail-pipe section after it has been cut.
- Install the over-axle tube and then install the tailpipe turnout. Make sure there is at least 1" clearance between exhaust pipe and spare tire heat shield.
- Install tip to desired position. Tighten down band clamp on tip only.
- If you removed any NOX, EGT, and EPD sensors, Re-install them and tighten.
- Ensure that all the components of the aFe POWER exhaust system are aligned and are at a safe clearance from all wires, hoses, brake lines, body parts, and tires.
- Start from the front of the aFe exhaust system and evenly tighten all clamps and fasteners.
- Start the vehicle and check all sensors and band clamps for exhaust leaks. If any leaks are found, determine cause and repair as necessary.
- Remove vehicle from jacks stands.
- It is recommended to re-tighten all clamps and hardware after 50-100 miles.