



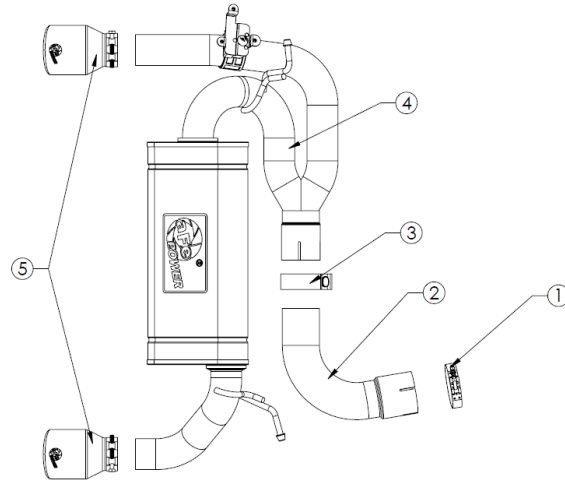
INSTALLATION INSTRUCTIONS

Axle-Back Exhaust

MAKE: BMW
MODEL: M235i F22/F23
YEAR: 2014-2016
ENGINE: L6-3.0L

49-36348-B
 49-36348-P

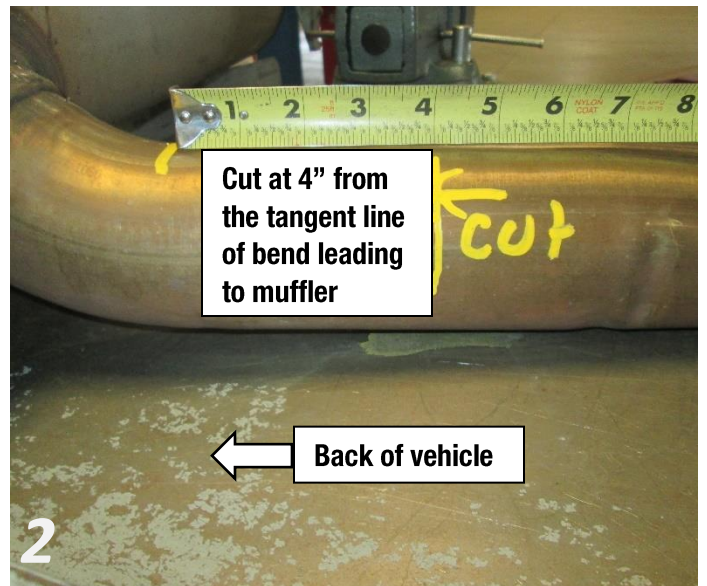
This system requires cutting of the O.E. exhaust



| Item | Description | Part Number | Quantity |
|------|---|--------------|----------|
| 1 | Clamp, T-bolt | 03-50282 | 1 |
| 2 | 3" Adapter Pipe | 05-245009 | 1 |
| 3 | 3" Band Clamp | 05-41055 | 1 |
| 4 | Muffler Assembly | 05-245008-B | 1 |
| 5 | EXH Tip 2-1/2 IN x 4 Out x 7L Bolt-On Blk | 49T25404-B06 | 2 |
| | EXH Tip 2-1/2 IN x 4 Out x 7L Bolt-On Pol | 49T25404-P06 | |

aFe POWER recommends professional installation on this product. Thoroughly inspect the aFe POWER exhaust system to make sure there is no damage from shipping (if damage is noted, immediately contact aFe POWER customer service). Allow time for your vehicle to cool down prior to installation. When working on your vehicle proceed with caution. Wear protective safety equipment; eye goggles and gloves to ensure a safe installation.

Install band clamps to proper torque specifications of 40-45 ft-lb.





INSTALLATION INSTRUCTIONS

MAKE: BMW
MODEL: M235i F22/F23
YEAR: 2014-2016
ENGINE: L6-3.0L

Axle-Back Exhaust

49-36348-B

49-36348-P

This system requires cutting of the O.E. exhaust

1. **(Read instructions prior to installation.)** It is recommended to not fully tighten the exhaust until it has been fully installed. Leave loose for adjustability.
2. Secure vehicle on jack stands (refer to your manual for specified jack stand positions).
3. For faster installation, spread out the parts of the exhaust alongside your vehicle as shown in the diagram above.
4. Disconnect negative battery terminal.
5. Disconnect the OE valve plug from the valve motor.
6. Remove the cross member and rear brace.
7. Loosen the OE V-band clamp securing the OE downpipe the OE exhaust system.
8. Un-bolt all OE rubber hanger mounts off the chassis and remove OE exhaust system.
9. Remove the valve motor from the OE muffler.
10. Using a marker, measure 4" away from the last bend leading into the OE muffler. **See reference image 2.**
11. Cut OE exhaust system at marked point.
12. Remove the (x2) OE rear rubber hanger mounts off the cut OE muffler section and install onto the aFe POWER Muffler Assembly.
13. Install the valve motor to the aFe POWER Muffler Assembly using the OE bolts.
14. Re-install the front portion of the OE exhaust using the OE V-band clamp to the OE down pipe.
15. Install the aFe POWER Adapter Pipe onto the OE exhaust using the (x1) T-bolt Clamp.
16. Install the aFe POWER Muffler Assembly onto the Adapter Pipe using the (x1) 3" Band Clamp.
17. Using the OE nuts, secure the OE rubber hanger mounts to the chassis and tighten.
18. Re-install the cross member and rear brace.
19. Reconnect the OE valve plug to the aFe POWER Axle-Back Exhaust System.
20. Install the (x2) aFe POWER Exhaust Tips to the left and right tailpipes using the supplied band clamps, but do not tighten.
21. Reconnect the battery.
22. Ensure that all the components of the aFe POWER Exhaust System are aligned and are at a safe clearance.
23. Start from the front of the OE exhaust system and evenly tighten all clamps and fasteners all the way through the aFe POWER Axle-Back Exhaust System.
24. Start the vehicle and check for any leaks. If any leaks are found, determine cause and repair as necessary.
25. Remove vehicle from jacks stands.
26. It is recommended to re-tighten all clamps and hardware after 50-100 miles.