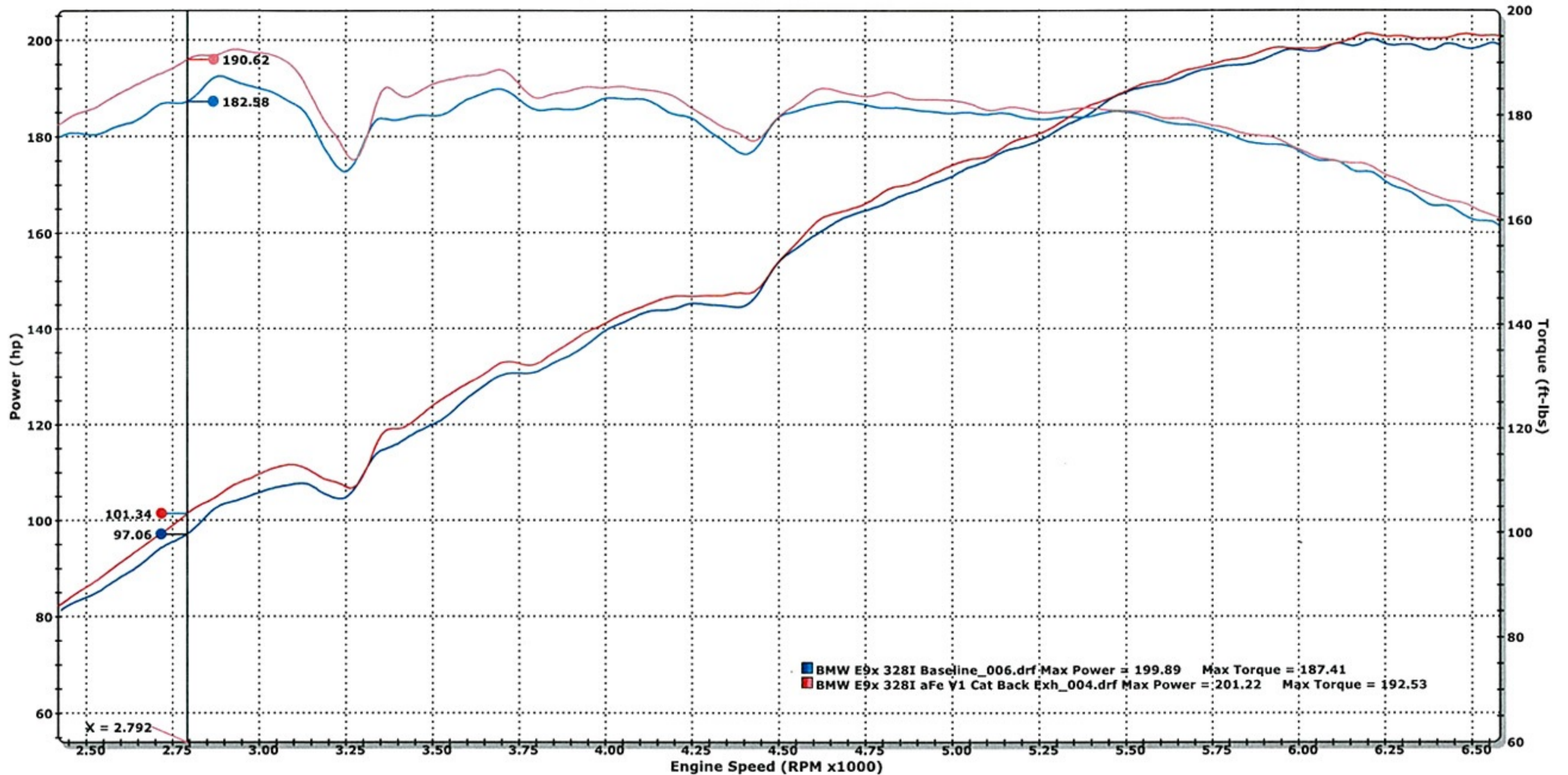




ENGINEERED ADRENALINE

DYNOJET RESEARCH

CF: SAE Smoothing: 5



■ BMW E9x 328I Baseline_006.drf - 3/25/2013 10:43:26 AM Run Type: RO Run Conditions: 72.70 °F, 29.01 in-Hg, Humidity: 37%, SAE: 1.02
 BMW E9x 328i Baseline
 Max Power = 199.89 Max Torque = 187.41
 OE Exh, aFe sealed Intake, 235/35/19 aftermarket wheels, 4th gear

■ BMW E9x 328I aFe V1 Cat Back Exh_004.drf - 3/27/2013 3:14:08 PM Run Type: RO Run Conditions: 79.10 °F, 29.01 in-Hg, Humidity: 33%, SAE: 1.03
 BMW E9x 328i aFe V1 Cat Back Exh
 Max Power = 201.22 Max Torque = 192.53
 aFe V.1 Cat Back, aFe sealed Intake, 235/35/19 aftermarket wheels, 4th gear

4.28 HP
 8.04 LB.FT TORQUE