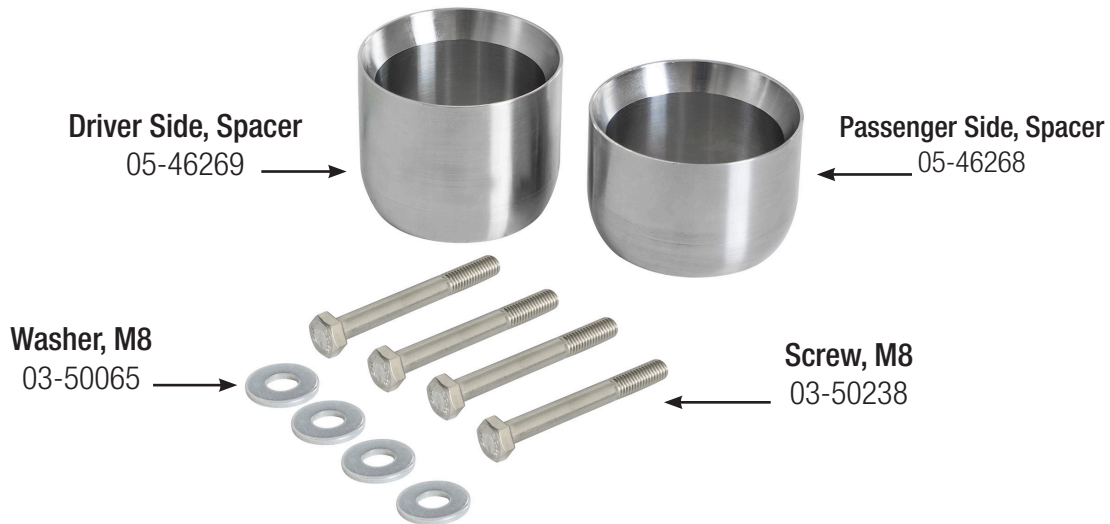




## INSTALLATION INSTRUCTIONS

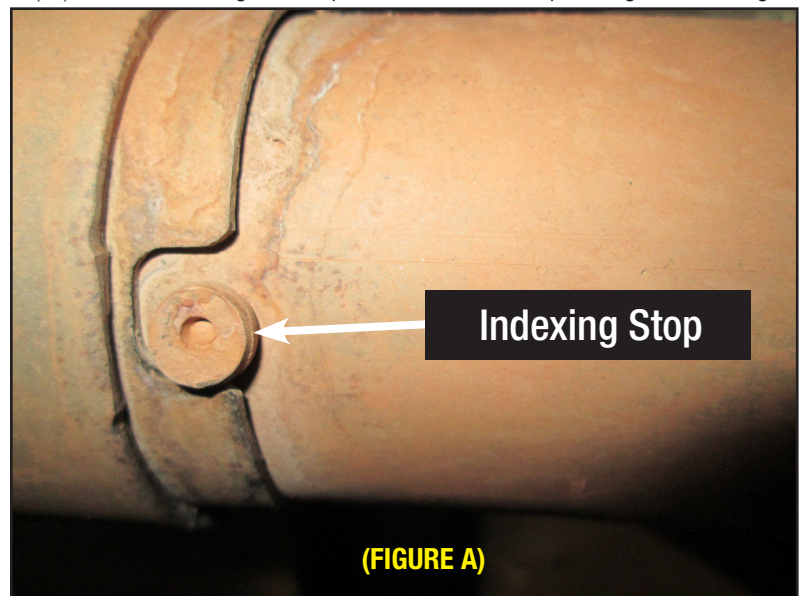
MAKE: Jeep  
MODEL: Wrangler (JK)  
YEAR: 2012-2018  
ENGINE: V6-3.6L

Mild Steel Spacers  
48-90003



Professional installation is highly recommended. (Read instructions prior to installation). Make sure to always have at least (2) stands or jacks on hand to support the removal of OE system. Also for the installation of aFe system. Any Removal of rubber isolation mounts may require using a spray lubricant such as WD40 and a pry bar.

- Step 1.** (Read Instructions prior to installation) for faster removal and installation of exhaust a trained professional is recommended for this procedure.
- Step 2.** Secure the stock exhaust with jack/stands.
- Step 3.** Remove the four exhaust flanges bolts at the left and right OE y-pipe.
- Step 4.** Loosen the OE y-pipe band clamp that joins the front and rear OE mid-pipe sections of pipe this will allow the exhaust to slide together to maintain correct positioning of the exhaust system.
- Step 5.** Using a chisel or grinder, remove the spot welded indexing stop in the OE y-pipe this will allow the exhaust to slide deep. **(FIGURE A).**
- Step 6.** Install the aFe spacer driver side using supplied bolts (x2) 70mm. The longer aFe spacer is used on the passenger side using supplied bolts (x2) 80mm.
- Step 7.** Make sure the exhaust pipes are still properly aligned and the spacers are straight retightening the y-pipe band clamp and check the exhaust system for clearance.
- Step 8.** Double check all work and ensure everything is tight.
- Step 9.** Start the vehicle and check for any leaks.
- Step 10.** Congratulations, your system is now complete and fully installed! It is recommended to re-tighten all clamps and bolts



**Caution:** Allow time for your vehicle to cool down prior to installation. When working on or under your vehicle proceed with caution. Exhaust systems reach high temperatures and may cause serious burns. Wear protective safety equipment; eye goggles and gloves to ensure a safe installation. **aFe recommends professional installation on our products.**

Rely on premium performance exhaust systems by aFe if you're looking for quality and efficiency.