



## ***advanced FLOW engineering***

### **Instruction Manual P/N: 46-50064-B**

---

#### **BladeRunner – Radiator Hoses**

Make: DODGE Model: RAM Year: 2003-2007 Engine: L6 – 5.9L(td)

Make: DODGE Model: RAM Year: 2007.5-2009 Engine: L6 – 6.7L(td)



- Please read the entire instruction manual before proceeding.
- Ensure all components listed are present.
- If you are missing any of the components, call customer support.
- Ensure you have all necessary tools before proceeding.
- Do not attempt to work on your vehicle when the engine is hot.
- Disconnect the negative battery terminal before proceeding.
- Retain factory parts for future use.

Label	Qty.	Description
A	1	Radiator Hose, Upper
B	1	Radiator Hose, Lower
C	1	Clamp, T-Bolt: 2"
D	2	Clamp, T-Bolt: 2.13"
E	1	Clamp, T-Bolt: 2.25"

**Tools Needed:** Ratchet, extension, 8mm, 10mm, 13mm, socket, 7/16" socket, pliers, flat head screwdriver.



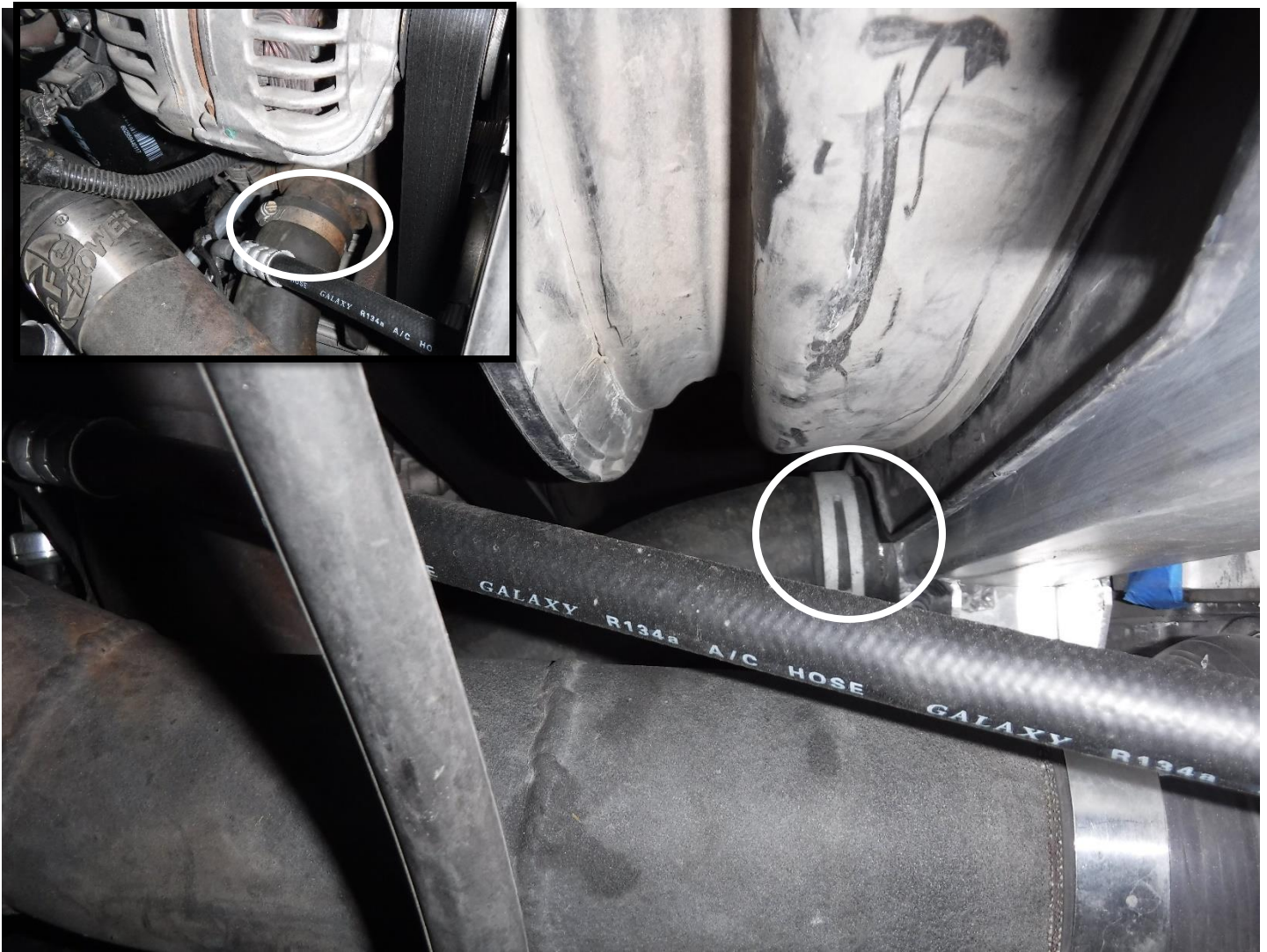


1. Park vehicle on level ground and engage the parking brake.
2. Disconnect both negative battery cables.
3. Open the petcock and begin draining coolant into a drain pan.
4. Remove radiator cap and drain remainder of coolant from the system.





5. Locate the upper radiator hose on the driver side of the vehicle.
6. Disconnect and remove the upper radiator hose from the vehicle.
7. Install the supplied aFe upper radiator hose into the vehicle along with one (1) of the supplied 2.13" T-Bolt clamps on the radiator end and the supplied 2" T-Bolt clamp on the engine side.
8. Rotate the new hose clamps to where they will not be rubbing on anything and tighten.



9. Disconnect the electrical connection for the sensor on the intake tube.
10. Disconnect breather hose from intake tube (if equipped).
11. Remove the nut securing the air box to the vehicle.
12. Remove the air box and intake tube from the vehicle.
13. Locate the lower radiator hose on the passenger side of the vehicle.
14. Disconnect the lower radiator hose from the engine from the top.
15. Disconnect the lower radiator hose from the radiator from the bottom.
16. Remove the radiator hose from the vehicle.





17. Install the supplied aFe lower radiator hose into the vehicle along with the remaining 2.13" T-Bolt clamp on the radiator end and the supplied 2.25" T-Bolt clamp on the engine side.
18. Rotate the new hose clamps to where they will not be rubbing on anything and tighten.



19. Reinstall the air box and intake tube into the vehicle.
  20. Reinstall the nut securing the air box to the vehicle.
  21. Reconnect breather hose to intake tube (if equipped).
  22. Reconnect the electrical connection for the sensor on the intake tube.
  23. Be sure the drain plug is closed completely.
  24. Reconnect both negative battery cables.
  25. Use the proper coolant refill procedure to be sure that all the air gets out of the system when refilling the coolant.
  26. Top off coolant in the radiator, fill the over-flow bottle to the max line, and install the radiator cap.
  27. Test drive the vehicle.
  28. Let the vehicle cool down then check coolant levels, top off if needed.
- Install is now complete.

**Note: Be sure to check all connections after 50-100 miles.**