

advanced FLOW engineering

Instruction Manual P/N: 46-20281

Make: **Nissan** Model: **Titan XD** Year: **2016-2017** Engine: **V8-5.0L (td) Cummins**



- Please read the entire instruction manual before proceeding.
- Ensure all components listed are present.
- Ensure you have all necessary tools before proceeding.
- Do not attempt to work on your vehicle when the engine is hot.
- Disconnect the negative battery terminal before proceeding.
- Retain factory parts for future use.

Label	Qty.	Description	Part Number
A	1	Intercooler	A5-60749
B	2	Coupling, Silicone Elbow	05-60433
C	4	Clamp, Spring Loaded T-Bolt	03-50530
D	6	Plug, Hex Hd Socket: 1/8"	03-50029
E	2	Screw, Scket Hd Cap: M8	03-50341
F	5	Screw, Hex Hd: M6	03-50052
G	2	Washer, Flat M8: 16mm	03-50159
H	2	Screw, Socket Hd Cap: M8	03-50171
I	2	Washer, Flat: 24mm	03-50065
J	5	Washer, Flat: M6	03-50070
K	2	Seal Trim: 3/4" Bulb (14" inches)	05-00007

Tools Needed: Masking tape, thread sealant, flat blade screwdriver, pliers, panel popper, 3/16" & 8mm Allen wrenches, 13mm wrench, 10mm, 11mm, 13mm, 14mm sockets, ratchet and extension.

NOTE: Plastic will need to be trimmed to fit this intercooler into the vehicle, please read instructions before installation.

Note: Legal in California for use on race vehicles only. The use of this device on vehicles used on public streets or highways is strictly prohibited in California and others states that have adopted California emission regulations.

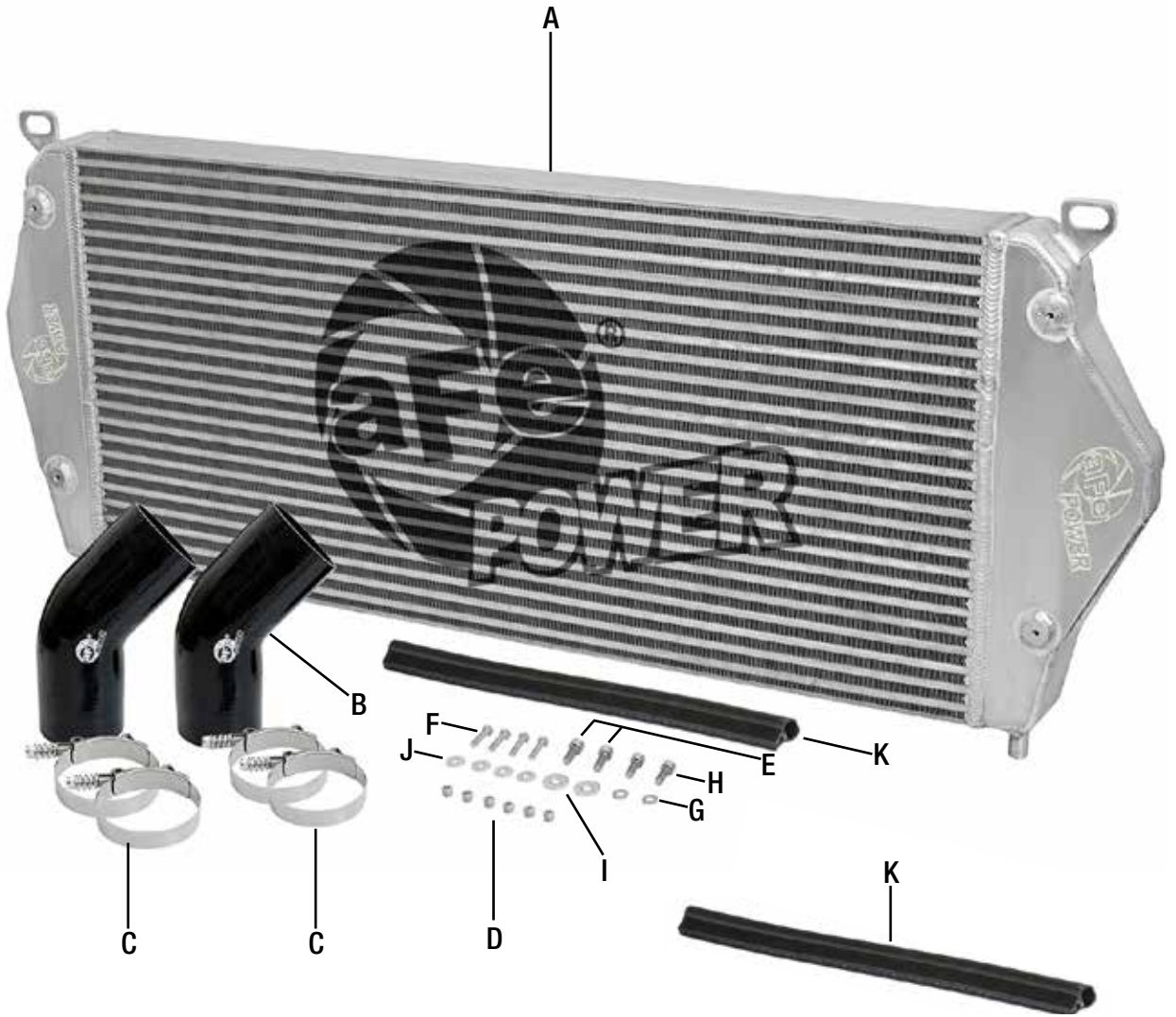




Figure A

Refer to Figure A for Steps 1-4

Step 1: Park the vehicle on level ground and engage the parking brake.

Step 2: Disconnect the negative battery cable on both batteries.

Step 3: Remove plastic radiator cover, using a panel piped or flat blade screwdriver.

Step 4: This is a good time to place masking tape across the bumper or lower grille to protect the paint.



Figure B

Refer to Figure B for Steps 5-6

Step 5: Remove grille using a flat blade screwdriver or pliers by twisting ten plastic retaining clips 1/4 turn and pulling on the grille in that area to release the clips, then unclip the six lower mounting tabs from behind the grille.

Note: Six will be across the top and two will be in each of the smaller side grilles.

Step 6: Once the grille is detached from its mounts disconnect the connector on the back side of the grill and set the grill aside.


Figure C
Refer to Figure C for Steps 7-11

- Step 7: Remove the mounting bolts for the two horns using a 10mm socket and unplug the connector.
- Step 8: Remove the two plastic clips securing the plastic shrouds on each side in front of the A/C condenser and set aside.
- Step 9: Loosen the two clams securing the hot side intercooler tube to the turbo outlet tube and the intercooler, using an 11mm deep socket, and remove the tube from the vehicle.
- Step 10: Loosen the two clams securing the cold side intercooler tube to the intercooler and the engine inlet, using an 11mm deep socket, and remove the tube from the vehicle.
- Step 11: Remove the four bolts securing the hood latch to the upper core support using 13mm and 14mm sockets.



Figure D

Refer to Figure D for Step 12

Step 12: Remove the intercooler and radiator mounting bolts that connect to the upper core support using 13mm and 14mm sockets.



Refer to Figure E for Step 13

Step 13: Remove the three headlight bolts on each side using a 10mm socket.

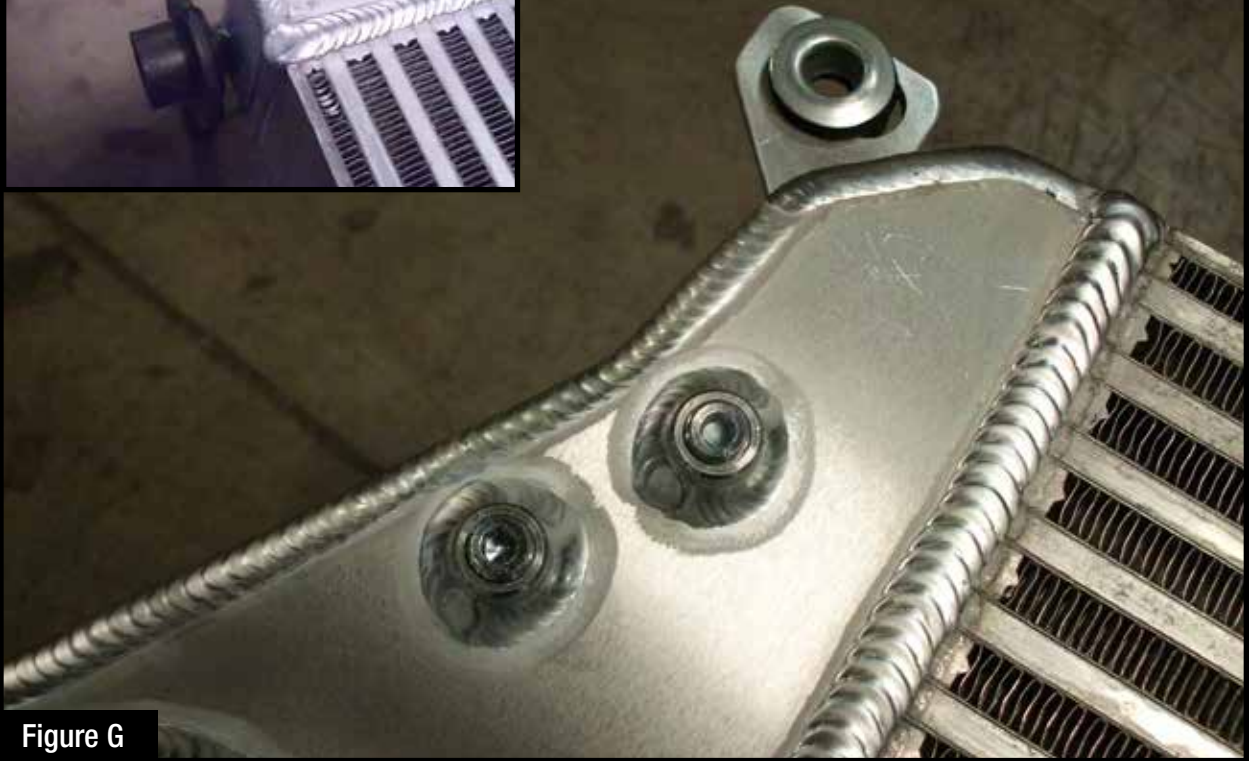
Note: There will be two bolts on the top of the headlight and the third will be underneath the headlight.



Figure F

Refer to Figure F for Steps 14-18

- Step 14: Remove the top upper core support mounting bolt on each side using a 13mm socket.
- Step 15: Unclip the top of each headlight and lean them forward and remove the last two bolts securing the upper core support to the vehicle on each side, using a 13mm wrench.
- Step 16: Remove the upper core support from the vehicle.
- Step 17: Remove the four bolts securing the A/C condenser to the intercooler, using a 10mm socket.
- Step 18: Remove the intercooler from the vehicle with some help.

**Figure G****Refer to Figure G for Steps 19-21**

Step 19: Now we can begin to prepare the aFe intercooler for install.

Step 20: Install all six 1/8" plugs into the intercooler, using a 3/16" Allen wrench.

NOTE: Be sure to use thread sealant to prevent any leaking.

Step 21: Transfer the top mounting grommets and the bottom grommets from the factory intercooler to the aFe intercooler.



Figure H

Refer to Figure H for Steps 22-27

Step 22: Install the aFe intercooler into the vehicle with some help.

Step 23: Mount the A/C condenser to the aFe intercooler using four of the M6 bolts with the washers supplied using a 10mm socket, do not tighten now.

Step 24: Install the upper core support back into the vehicle.

Step 25: Install the mounting bolts for the intercooler and radiator back into the core support.

Step 26: Adjust the A/C condenser and tighten the mounting bolts using a 10mm socket.

Step 27: Mount the headlights back onto the vehicle.



Figure I

Refer to Figure I for Steps 28-29

Step 28: Mount the hood latch back onto the upper core support using the longer M8 bolts with the larger washers on the outside holes and the shorter M8 bolts with the smaller washers on the inside holes, using a 6mm Allen wrench.

Step 29: Mount the horns back into place and connect wiring harness.

INSTALL



Figure J

Refer to Figure J for Steps 30-31

Step 30: Trim the inside edge of the plastic shrouds removed from step 8 1/2" from the plastic edge and install the seal trim supplied in the kit onto the cut edge, trim the seal trim if necessary.

Step 31: Install the plastic shrouds back into the vehicle.

**Figure K****Refer to Figure K for Steps 32-35**

- Step 32: You will need to remove the plastic retaining clips from the mounting locations for the grille by squeezing the top and bottom of the clips and pulling them out of the mounting holes in the vehicle.
- Step 33: Install the plastic clips into the corresponding locations in the grille by starting one side and twisting the clip until both tabs lock into the grille.
- Step 34: Once all the clips have been installed and properly locked into place, the grille can be installed back onto the vehicle and reconnect the connector from Step 6.
- Step 35: Install the plastic cover from Step 3.



Figure L

Refer to Figure L for Steps 36-38

Step 36: Install the aFe intercooler tubes, couplings, plugs and clamps.

NOTE: See aFe intercooler tube instruction sheets for details.

Step 37: Reconnect the negative battery cables.

Step 38: Check all clamps, tubes, and fittings to ensure they are not rubbing on anything and that everything is tight. Installation is now complete!



SCORCHER GT Module



P/N: 77-46101

Momentum HD Intake



P/N: 50-76105 (P10R)
51-76105 (PDS)

Dynamic Air Scoop



P/N: 54-76105-S

OE Replacement Filter



P/N: 30-10269 (P5R)
31-10269 (PDS)

Intrcooler



P/N: 46-20281

Rear Differential Cover



P/N: 46-70362 (Blk./Mach.)
46-70360 (RAW)

DPF-Back Exhaust



P/N: 49-06112-B (Blk Tip)
49-06112-P (Pol Tip)