



Equipped with AEM® *Dryflow™ Filter*  
No Oil Required!

## INSTALLATION INSTRUCTIONS

### PART NUMBER: 22-672

---

2001-2002	BMW	325Ci	L6-2.5L	C.A.R.B. E.O. # D-670-2
2001-2002	BMW	325i	L6-2.5L	C.A.R.B. E.O. # D-670-2
2001-2002	BMW	325Xi	L6-2.5L	C.A.R.B. E.O. # D-670-2
2000	BMW	328Ci	L6-2.8L	C.A.R.B. E.O. # D-670-2
1999-2000	BMW	328i	L6-2.8L	C.A.R.B. E.O. # D-670-2
1999	BMW	328iS	L6-2.8L	C.A.R.B. E.O. # D-670-2

## PARTS LIST

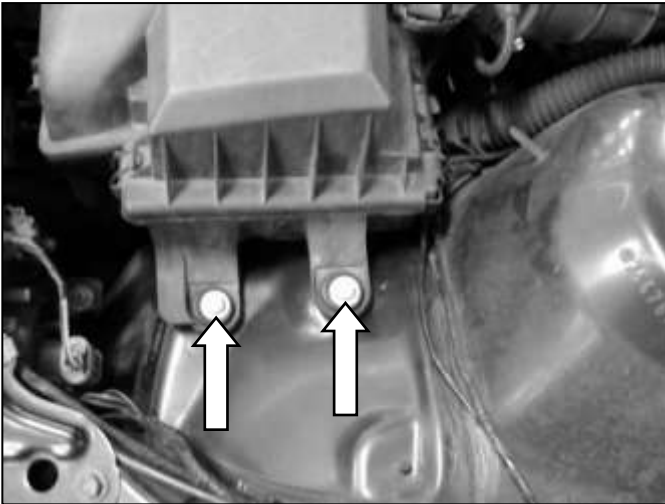
Description	Qty.	Part Number
Element Parts Kit 3.00 X 5" Dry Ele.	1	21-203DK
Heat Shield	1	20-670
Short Pipe	1	2-6721
Hose, Silicone 3.00x2" Black	1	5-302
Mount, Rubber 5/8" X 6mm	1	1228598
Zip Tie,6 Long	1	1-113
Washer, 6mm Soft Mount	4	08160
Nut, M6 Hex Serrated	4	444.460.04
1/2" Bnd. Hose Clamp, 2.56"-3.50"	2	9448
1/2" Bnd. Hose Clamp, 2.90"-3.75"	1	9452

**Read and understand these instructions BEFORE attempting to install this product. Failure to follow installation instructions and not using the provided hardware may damage the intake tube, throttle body and engine.**

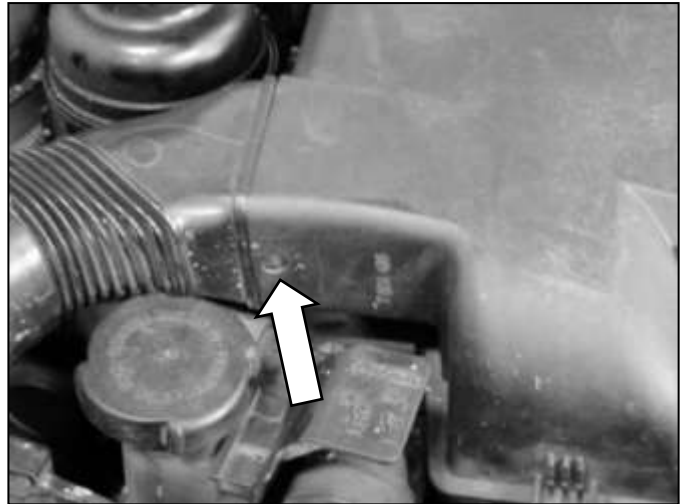
### **1. Preparing Vehicle**

- a. Make sure vehicle is parked on level surface.
- b. Set parking brake.
- c. If engine has run in the past two hours, let it cool down.
- d. Disconnect negative battery terminal.
- e. Do not discard stock components after removal of the factory system.

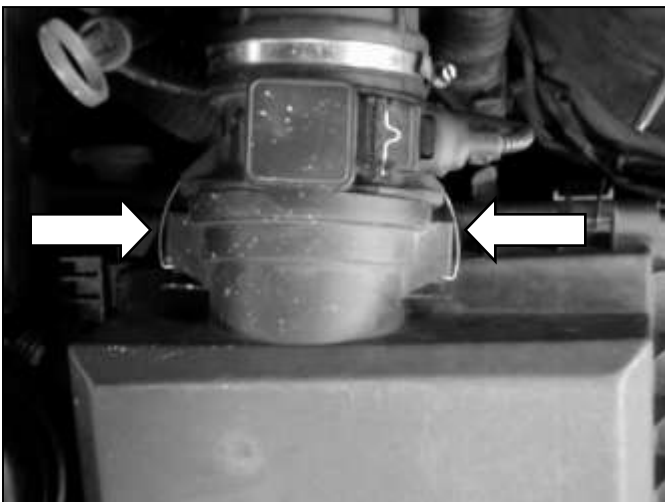
### **2. Removal of stock system**



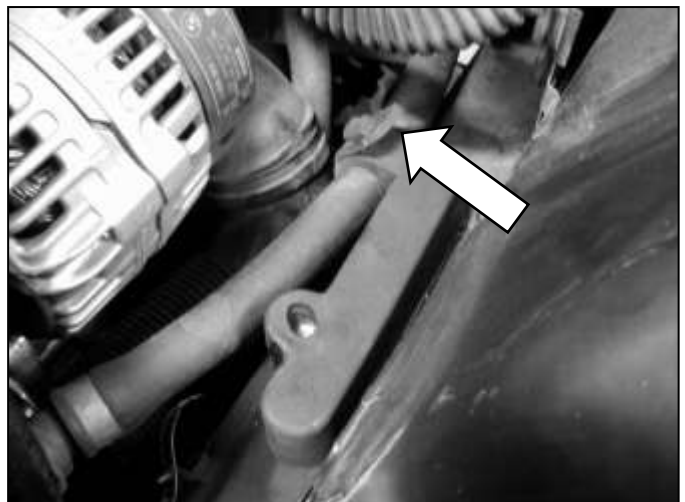
a. Loosen and remove the two bolts holding down the airbox.



b. Push in tab to loosen duct.



c. There are 2 clips holding the airbox to the MAF sensor. Unclasp the metal clips holding the MAF sensor to the airbox. Remove the stock airbox assembly.



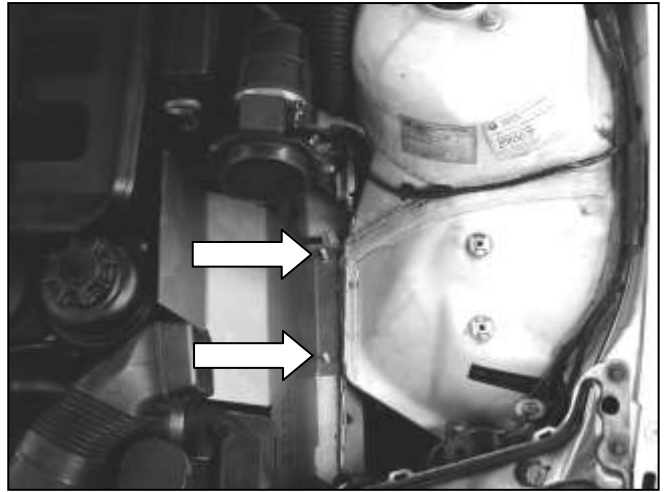
d. Underneath the airbox sits a rubber mount. Unclasp the rubber latch and remove the mount.

### 3. Installation of AEM® Intake System

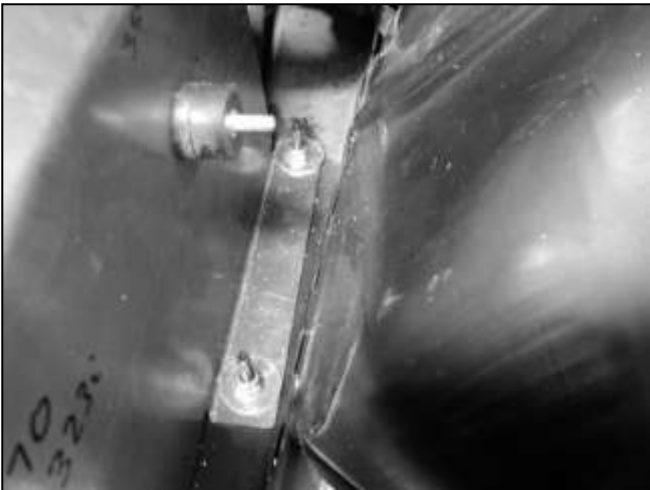
a. When installing the intake system, do not completely tighten the hose clamps or mounting hardware until instructed to do so.



b. Attach zip tie around both hoses as shown.



c. Insert the heat shield. Secure with washers and nylok nuts.



d. Attach rubber mount to heat shield.



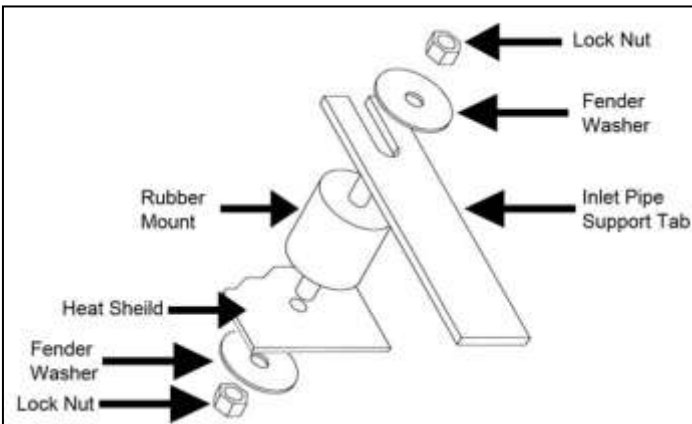
e. Secure the rubber mount on engine bay side of the heat shield with a washer and nylok nut.



f. Attach 2" coupler to MAF sensor. Secure with hose clamps.



g. Insert inlet pipe and secure the bracket to the rubber mount. Refer to the diagram below for proper installation of the rubber mount assembly.



h. Proper installation of rubber mount assembly.



i. Install the air filter and secure with a hose clamp.

#### 4. Reassemble Vehicle

- a. Position the inlet pipes for the best fitment. Be sure that the pipes or any other components do not contact any part of the vehicle. Tighten the rubber mount, all bolts, and hose clamps.
- b. Check for proper hood clearance. Re-adjust pipes if necessary and re-tighten them.
- c. Inspect the engine bay for any loose tools and check that all fasteners that were moved or removed are properly tightened.
- d. Reconnect negative battery terminals and start engine. Let the vehicle idle for 3 minutes. Perform a final inspection before driving the vehicle.

#### 5. CARB Sticker Placement

- a. The C.A.R.B. exemption sticker, (attached), must be visible under the hood so that an emissions inspector can see it when the vehicle is required to be tested for emissions. California requires testing every two years, other states may vary.

## 6. Service and Maintenance

- a. It is recommended that you service your AEM<sup>®</sup> Dryflow™ filter every 20,000 miles for optimum performance.  
Use AEM Dryflow cleaning kit part # 21-110.
- b. Use aluminum polish to clean your polished AEM<sup>®</sup> intake tube.
- c. Use window cleaner to clean your powder coated AEM<sup>®</sup> intake tube. **(NOTE: DO NOT USE aluminum polish on powder coated AEM intake tubes).**