



Equipped with AEM® Dryflow™ Filter  
No Oil Required!

## **INSTALLATION INSTRUCTIONS**

### **PART NUMBER: 22-630**

---

1995-1999	SATURN	SC1	L4-1.9L	C.A.R.B. E.O. # D-670
1993-1999	SATURN	SC2	L4-1.9L	C.A.R.B. E.O. # D-670
1991-1992	SATURN	SC	L4-1.9L	C.A.R.B. E.O. # D-670

## PARTS LIST

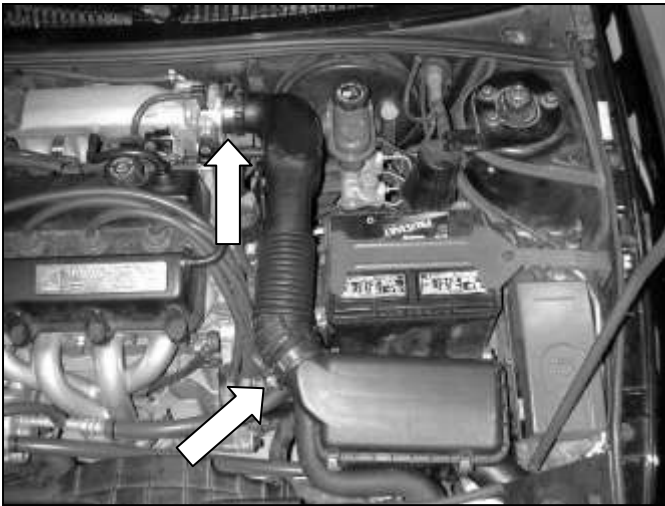
Description	Qty.	Part Number
Element Parts Kit 2.50 X 5" Dry W/H	1	21-201D-HK
Short Pipe	1	2-63011
Hose, Silicone 2.50x2" Black	1	5-252
Hose; 3/8"ID X 18"L	1	5-1018
Mount, Rubber 1" X 6mm	1	1228599
Washer, 6mm Soft Mount	1	08160
Nut, M6 Hex Serrated	1	444.460.04
Hose Clamp, 3/4"	2	4093-5
1/2" Bnd. Hose Clamp, 2.31-3.25"	1	9444
1/2" Bnd. Hose Clamp, 2.15-3.00"	2	9440

Read and understand these instructions **BEFORE** attempting to install this product. Failure to follow installation instructions and not using the provided hardware may damage the intake tube, throttle body and engine.

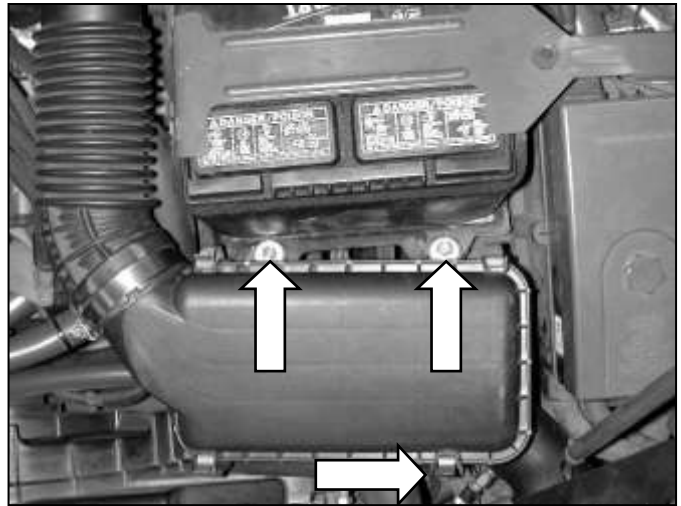
### 1. Preparing Vehicle

- a. Make sure vehicle is parked on level surface.
- b. Set parking brake.
- c. If engine has run in the past two hours, let it cool down.
- d. Disconnect negative battery terminal.
- e. Do not discard stock components after removal of the factory system.

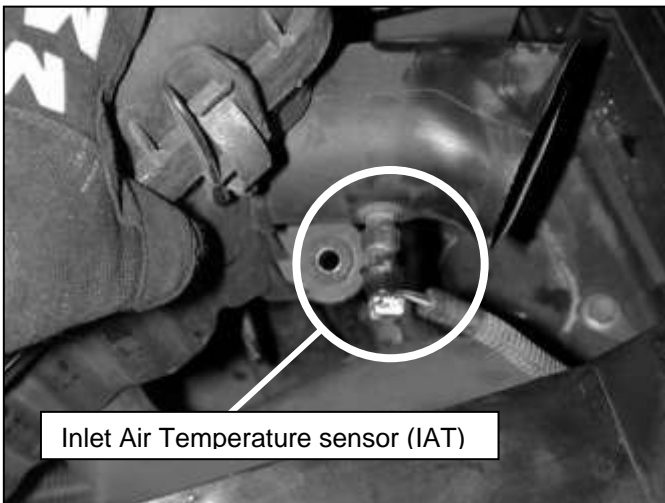
### 2. Removal of stock system



a. Snap open the clips on the throttle body and the air box. They should lock open.

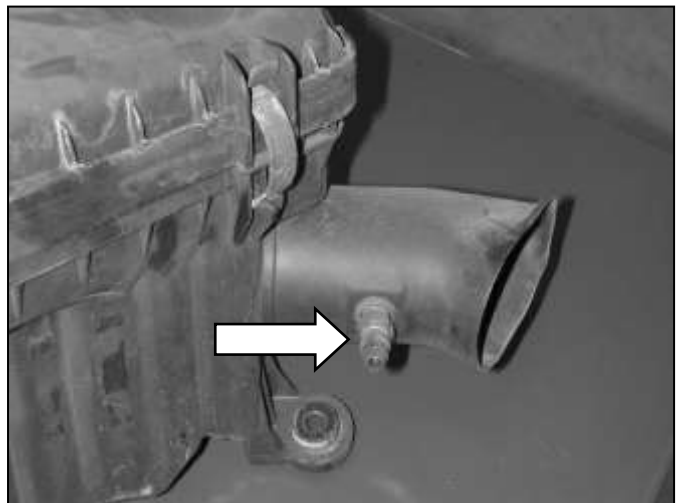


b. Remove the 3 bolts holding down the air box. Remove hose to the air box assembly.



Inlet Air Temperature sensor (IAT)

c. Unplug IAT from factory air box. Remove air box.



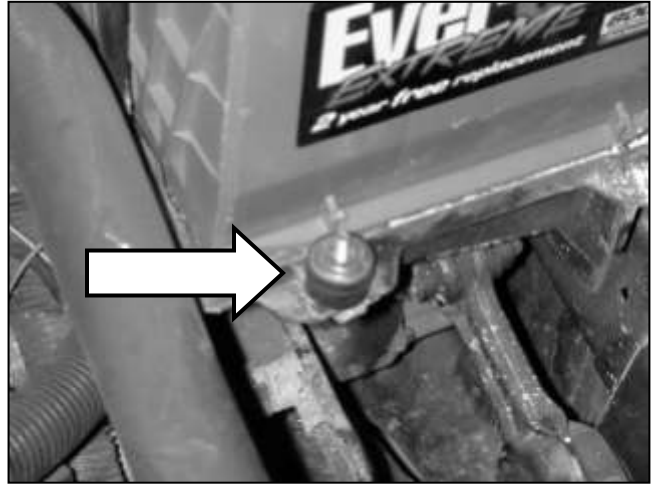
d. Remove the IAT from the air box.

### 3. Installation of AEM® intake system.

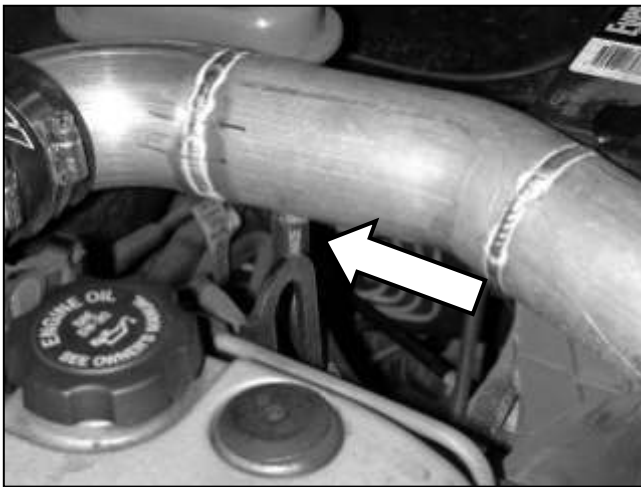
- a. When installing the intake system, do not completely tighten the hose clamps or mounting hardware until instructed to do so.



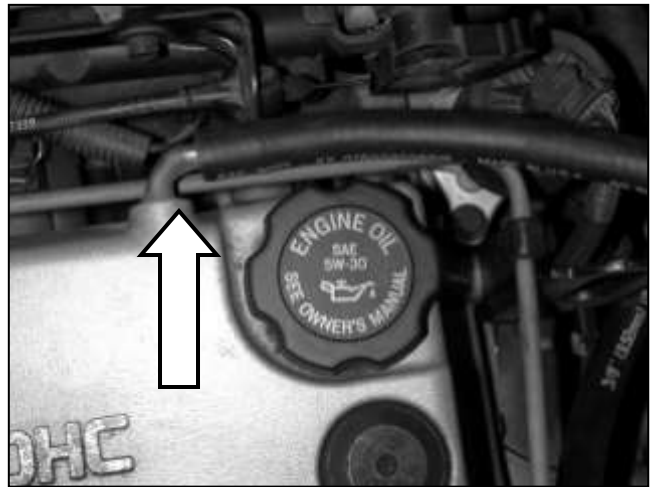
b. Insert intake pipe with provided coupler and hose clamps.



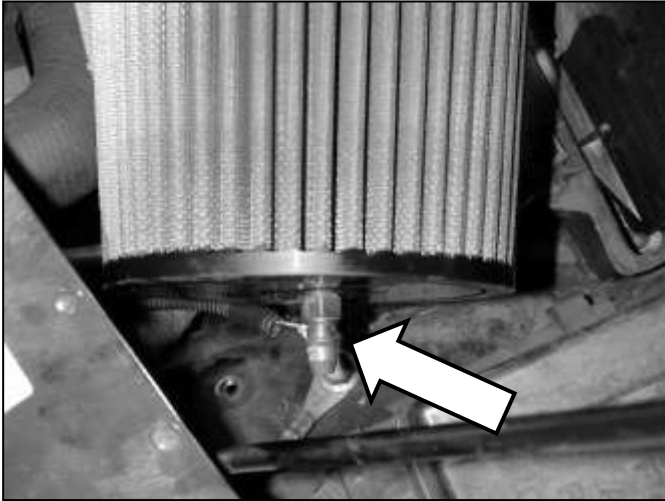
c. Insert rubber mount.



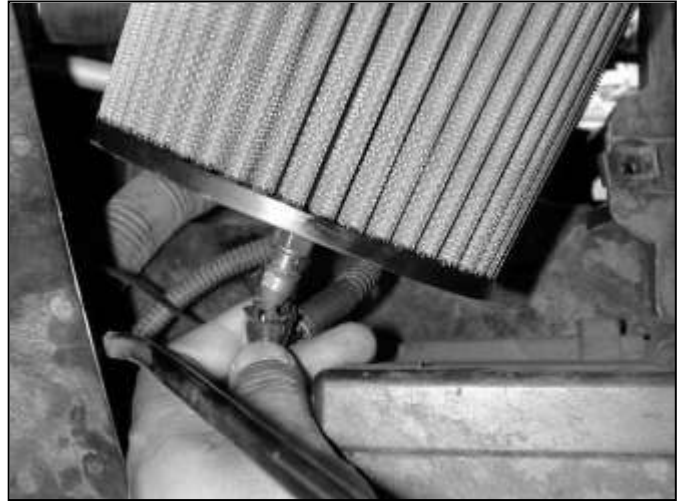
d. Attach breather hose to inlet pipe with provided clamp.



e. Attach breather hose to crank case with provided clamp.



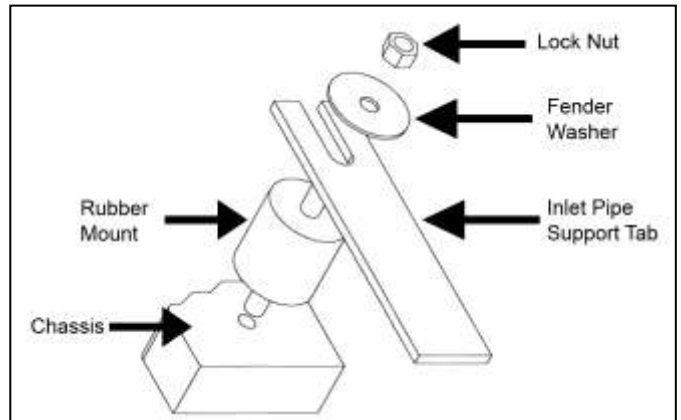
f. Attach the air filter element to the end of the inlet pipe. Insert the IAT into the air filter. Make sure the sensor is snug.



g. Attach the IAT connector to the sensor.



h. Ensure there is enough clearance around the air filter. Once proper fitment is achieved secure the air filter. Secure the intake bracket to the rubber mount installed in step 3c with a washer and nyloc nut. Refer to diagram for proper installation of rubber mount assembly.



Proper installation of rubber mount assembly.



AEM® intake system installed

#### 4. Reassemble Vehicle

- a. Position the inlet pipes for the best fitment. Be sure that the pipes or any other components do not contact any part of the vehicle. Tighten the rubber mount, all bolts, and hose clamps.
- b. Check for proper hood clearance. Re-adjust pipes if necessary and re-tighten them.
- c. Inspect the engine bay for any loose tools and check that all fasteners that were moved or removed are properly tightened.
- d. Reconnect negative battery terminals and start engine. Let the vehicle idle for 3 minutes. Perform a final inspection before driving the vehicle.

#### 5. CARB Sticker Placement

- a. The C.A.R.B. exemption sticker, (attached), must be visible under the hood so that an emissions inspector can see it when the vehicle is required to be tested for emissions. California requires testing every two years, other states may vary.

#### 6. Service and Maintenance

- a. It is recommended that you service your AEM® Dryflow™ filter every 20,000 miles for optimum performance. Use AEM Dryflow cleaning kit part # 21-110.
- b. Use aluminum polish to clean your polished AEM® intake tube.
- c. Use window cleaner to clean your powder coated AEM® intake tube. **(NOTE: DO NOT USE aluminum polish on powder coated AEM intake tubes).**