



Equipped with AEM® Dryflow™ Filter  
No Oil Required!

# **INSTALLATION INSTRUCTIONS**

## **PART NUMBER**

### **21-748C (Gun Metal Gray Finish)**

---

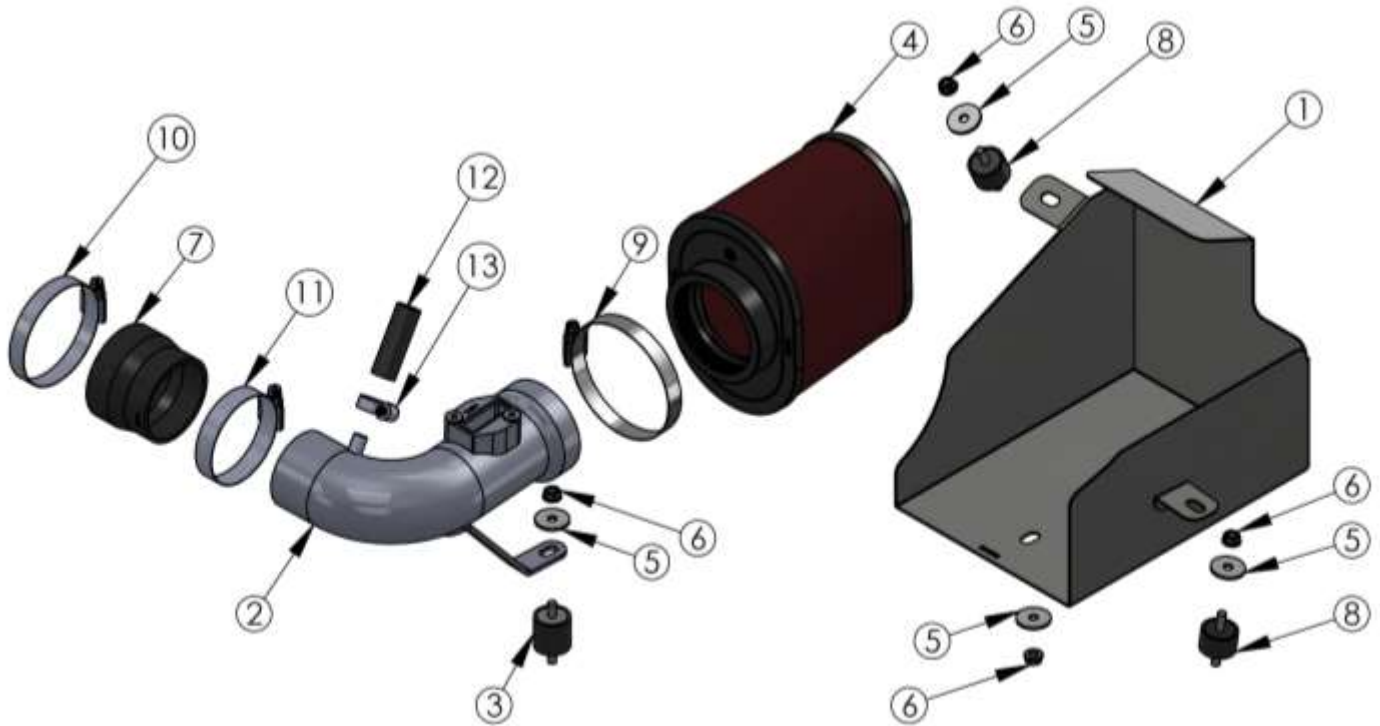
2015

Honda

Fit

1.5L

ITEM NO.	PART NUMBER	DESCRIPTION	QTY.
1	20-8545	HEAT SHIELD; 21-748 HONDA FIT 1.5L TB/PC	1
2	AEM-2-1526C	INTAKE TUBE; HONDA FIT L4 1.5L; 2015; GUNMETAL GRAY	1
3	AEM-1228599	MOUNT, RUBBER 1" X 6MM	1
4	AEM-21-2127DK	AIR FILTER; 2-3/4" X 5" OVAL DRYFLOW	1
5	08160	WASHER; 1"D X 1/4 HOLE FENDER	4
6	AEM-444.460.04	NUT, M6 HEX SERRATED	4
7	08476	HOSE; 2-1/2" TO 2-1/4" ID X 2"L TPRD REINFORCED	1
8	AEM-1228598	MOUNT, RUBBER 5/8" X 6MM	2
9	AEM-9448	1/2" BNDHOSE CLAMP, 2.56"-3.50"	1
10	AEM-9440	HOSE CLAMP, 2.15-3.00"	1
11	AEM-9436	1/2" BNDHOSE CLAMP, 1.81"-2.75"	1
12	AEM-5-1002	HOSE; 3/8"ID X 2"L	1
13	AEM-4093-5	HOSE CLAMP, 3/4"	1



Read and understand these instructions **BEFORE** attempting to install this product. Failure to follow installation instructions and not using the provided hardware may damage the intake tube, throttle body and engine.

**Tools Needed:**

Screw drivers  
10MM socket  
8MM socket  
Socket Driver  
Side Cutters

**1. Preparing Vehicle**

- a. Make sure vehicle is parked on level surface.
- b. Set the parking brake.
- c. If engine has run in the past two hours, let it cool down.
- d. Disconnect negative battery terminal.
- e. Do not discard stock components after removal of the factory system.
- f. Open the air intake kit package and make sure all parts are included.

**2. Removal of stock system**



a. Disconnect the upper and lower air inlet ducts from the lower intake box.



b. Depress the spring clamp on the intake tube to disconnect the hard breather line as shown.



c. Disconnect the MAF harness from the connector. Unclip the two green tree-mount ties from upper airbox.



d. Loosen the hose clamp securing the intake tube to the throttle using a 8mm socket.



e. Carefully remove the stock intake assembly from the engine bay.



f. Use a phillips screwdriver to remove the MAF sensor. Set aside the stock screws for use with the AEM tube.

### 3. Installation of AEM® intake system.

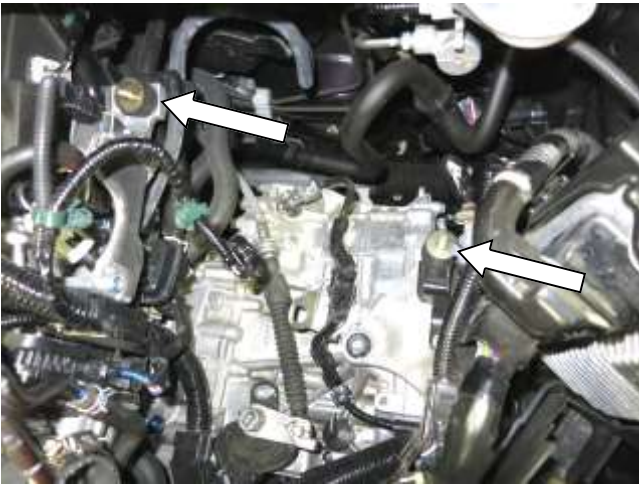
- a. When installing the intake system, do not completely tighten the hose clamps or mounting hardware until instructed to do so.



a. Use the stock screws removed in step 2f to fasten the MAF sensor into the AEM tube.



b. Install the transition coupler(08476) and fasten the hose clamp(AEM-9440) over the throttle. Slide loose hose clamp(AEM-9436) over the other coupler end.



c. Install the two rubber mounts(AEM-1228598) onto the stock airbox mounting locations as indicated.



d. Install the rubber mount(AEM-1228599) onto the heat shield(20-8545) as shown and fasten with the provided washer(08160) and nut(AEM-460.04).



e. Install the heat shield and align locating tabs over the rubber mounts. Fasten tabs down with the provided nuts(AEM-444.460.04) and washers(08160).



f. Install AEM filter(AEM-2127D) onto the intake tube with the hose clamp(AEM-9448) loosely fastened.



g. Insert the intake tube into the coupler and align the lower rubber mount to the lower bracket.



h. Connect the breather line to the intake tube using the hose(AEM-5-1002) and fasten hose clamp(AEM-4093-5). The hose may need to be trimmed for proper fitment.



i. Fasten the lower bracket down using the nut(AEM-444.06.04) and washer(08160) provided.



j. Adjust tube position if needed and fasten the hose clamp on the coupler.



k. Align the filter vertically and tighten the hose clamp to secure its position.



l. Reconnect the MAF harness to the sensor.



o. Factory air induction system.



p. Finished installation of AEM Intake System.

#### 4. Reassemble Vehicle

- a. Position the inlet pipes for the best fitment. Be sure that the pipes or any other components do not contact any part of the vehicle.
- b. Check for proper hood clearance. Re-adjust pipes if necessary and re-tighten them.
- c. Inspect the engine bay for any loose tools and check that all fasteners that were moved or removed are properly tightened.
- d. Reconnect negative battery terminal and start engine. Let the vehicle idle for 3 minutes. Perform a final inspection before driving the vehicle.

#### 5. Service and Maintenance

- a. AEM Induction Systems requires cleaning the intake system's air filter element every 100,000 miles. When used in dusty or off-road environments, our filters will require cleaning more often. We recommend that you visually inspect your filter once every 25,000 miles to determine if the screen is still visible. When the screen is no longer visible some place on the filter element, it is time to clean it. To clean, purchase our Synthetic air filter cleaner, part number 1-1000 and follow the easy instructions.
- b. Use window cleaner to clean your powder coated AEM<sup>®</sup> intake tube.

**NOTE: DO NOT USE aluminum polish on powder coated AEM<sup>®</sup> intake tubes.**