



Equipped with AEM® *Dryflow™ Filter*
No Oil Required!

INSTALLATION INSTRUCTIONS

PART NUMBER

21-739C (Gun Metal Gray Finish)

2015
2015

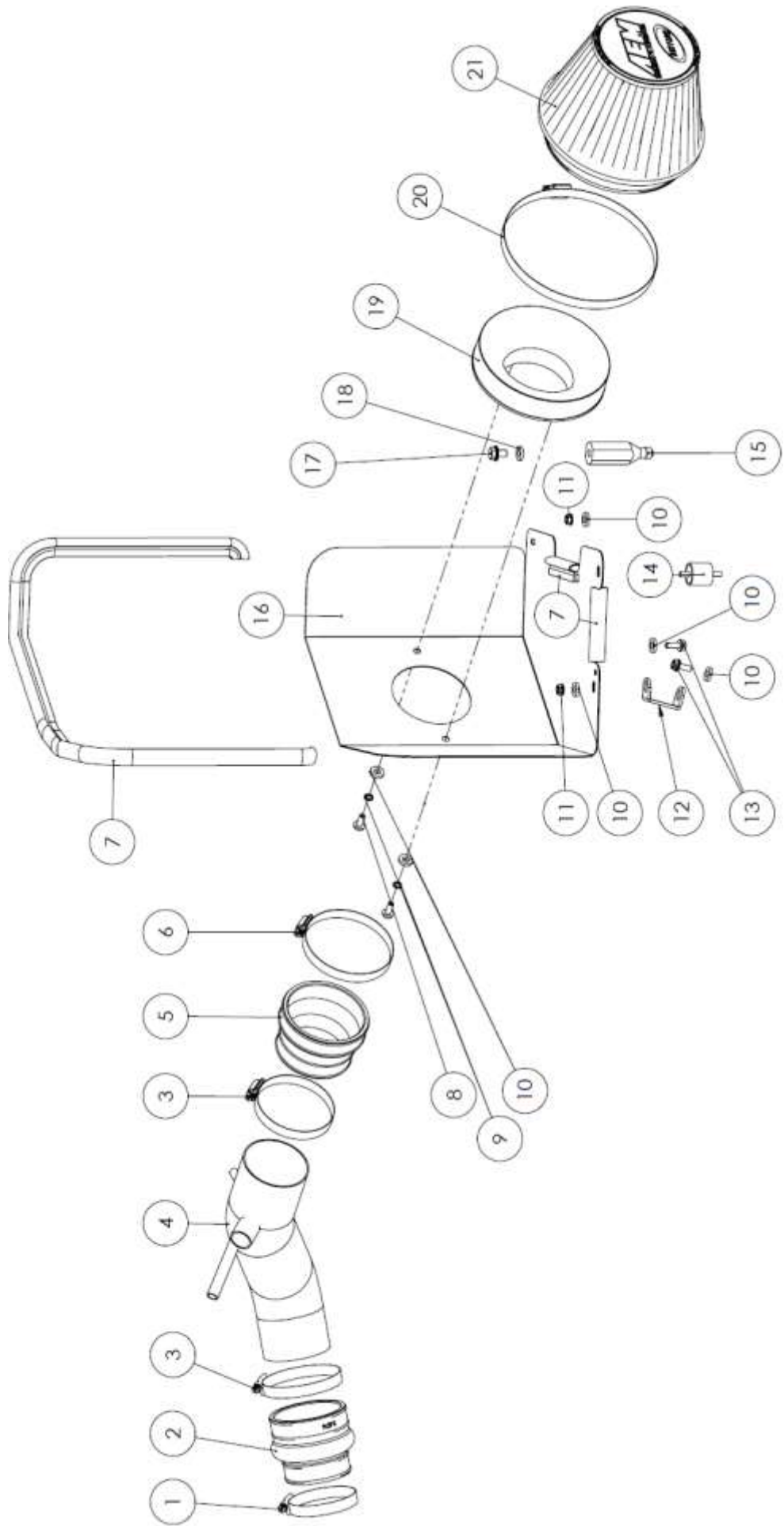
Hyundai
Kia

Sonata
Optima

2.0L Turbo
2.0L Turbo

Tools Needed:**8 MM Socket****10 MM Socket****12 MM Socket****13MM Deep Well Socket****Socket Driver****Flat Head Screw Driver****Pliers**

ITEM NO.	PART NUMBER	DESCRIPTION	QTY.
1	9440	HOSE CLAMP, 2.15-3.00"	1
2	5-574	HOSE; HUMP 2.50/3.00 X 3.00"	1
3	9448	1/2" BNDHOSE CLAMP, 2.56"-3.50"	2
4	2-1513C	INTAKE TUBE; 21-739 HYUNDAI 2.0L	1
5	5-1046	HOSE, ADAPTER 3.00/3.50X2.5	1
6	9456	1/2" BNDHOSE CLAMP, 3.15"-4.00"	1
7	102487	EDGE TRIM; 3/4" BULB, TOP LOC., 46"L	1
8	07730	BOLT; M6 X 1.00 X 16MM , BUTTON	2
9	1-3025	WASHER, M6 SPLIT LOCK ZINC	2
10	08275	WASHER; 1/4"ID X 5/8"OD - SAE	6
11	07529	NUT; M6 HEX SERRATED; GEO	2
12	32-3095	BRACKET, 21-739 HYUNDAI SONATA	1
13	08373	BOLT; M6X1.00X16 HEX; FLG, GEO	2
14	1228599	MOUNT, RUBBER 1" X 6MM	1
15	06532	STANDOFF; AIRBOX	1
16	20-8539	HEAT SHIELD; 21-739 HYUNDAI	1
17	08318	BOLT; M8X1.25X16 HEX; FLG, GEO	1
18	08272	WASHER; 8MM, FLAT, SS	1
19	21512-1	ADAPTER; UNIVERSAL, 6" FILTER 3.5"	1
20	94104	1/2" BNDHOSE CLAMP, 4.125-7.00"	1
21	21-209DK	AIR FILTER; 6" X 5" X 4.75" T DRYFLOW	1



Read and understand these instructions **BEFORE** attempting to install this product. Failure to follow installation instructions and not using the provided hardware may damage the intake tube, throttle body and engine.

1. Preparing Vehicle

- a. Make sure vehicle is parked on level surface.
- b. Set the parking brake.
- c. If engine has run in the past two hours, let it cool down.
- d. Disconnect negative battery terminal.
- e. Do not discard stock components after removal of the factory system.
- f. Open the air intake kit package and make sure all parts are included.

2. Removal of stock system



a. Remove the engine cover by pulling it up and out of the vehicle. Then, remove the 3 plastic screws circled and pull the stock scoop out of the vehicle.



b. Remove the 2 bolts securing the stock air box to the vehicle.



c. Release the 3 spring clamps circled on the stock intake tube and remove the 3 lines attached to the stock intake tube. These will be reattached in step 3j.



d. Loosen the hose clamp at the throttle body and remove the stock air box/intake tube from the vehicle.
Note: Do not discard any of your stock equipment.

3. Installation of AEM® intake system.

When installing the intake system, do not completely tighten the hose clamps or mounting hardware until instructed to do so.



a. Install the supplied bracket (32-3095), bolt (08373), and washer (08275) onto the angled part of the battery tray as shown. **Note:** The 90° bend will be at the top part of the bracket.

b. Install the rubber mount (1228599) into the battery tray location shown.



c. Install the edge trim(102487) as shown. Cut the trim to fit all three sections.

d. Install the adapter (21512-1) with the supplied button heads (07730) and 2 washers (1-3025 & 08275).



e. Install the standoff (06532) with the bolt (08318) and washer (08272) onto the heat shield as shown.



f. Install the hose adapter (5-1046) onto the filter adapter with hose clamps (9448 & 9456). Tighten the hose clamp closest to the heat shield at this time.



g. Install the hump hose (5-574) onto the turbo with the supplied hose clamps (9440 & 9448). Tighten the hose clamp closest to the turbo at this time.



h. Install the completed heat shield into the vehicle aligning the 2 slots in the front to the previously installed mounts. Push down to secure the stand off.



i. Install a washer (08275) and nut (07529) onto the rubber mount, shown on the right. Then install the bolt (08373), 2 washers(08275), and nut (07529) to secure the heat shield to the bracket. **Ref.** Exploded View



j. Install the AEM intake tube (2-1513C) into the two couplers. Tighten both hose clamps. Install all three of the hoses onto the tube and re-install the spring clamps to secure them that were removed in 2c.



k. Install the AEM filter (21-209DK) and hose clamp (94104) onto the filter adapter and secure the hose clamp.



l. Install the stock scoop and plastic screws that were removed in step 2a. Then reinstall the engine cover.



Stock Intake Installed.



AEM Intake Installed

4. Reassemble Vehicle

- Position the inlet pipes for the best fitment. Be sure that the pipes or any other components do not contact any part of the vehicle.
- Check for proper hood clearance. Re-adjust pipes if necessary and re-tighten them.
- Inspect the engine bay for any loose tools and check that all fasteners that were moved or removed are properly tightened.
- Reconnect negative battery terminal and start engine. Let the vehicle idle for 3 minutes. Perform a final

5. Service and Maintenance

- AEM Induction Systems requires cleaning the intake system's air filter element every 100,000 miles. When used in dusty or off-road environments, our filters will require cleaning more often. We recommend that you visually inspect your filter once every 25,000 miles to determine if the screen is still visible. When the screen is no longer visible some place on the filter element, it is time to clean it. To clean, purchase our Synthetic air filter cleaner, part number 1-1000 and follow the easy instructions.
- Use window cleaner to clean your powder coated AEM[®] intake tube.

NOTE: DO NOT USE aluminum polish on powder coated AEM[®] intake tubes.