



Equipped with AEM® *Dryflow™* Filter  
No Oil Required!

## INSTALLATION INSTRUCTIONS

### PART NUMBER:21-683

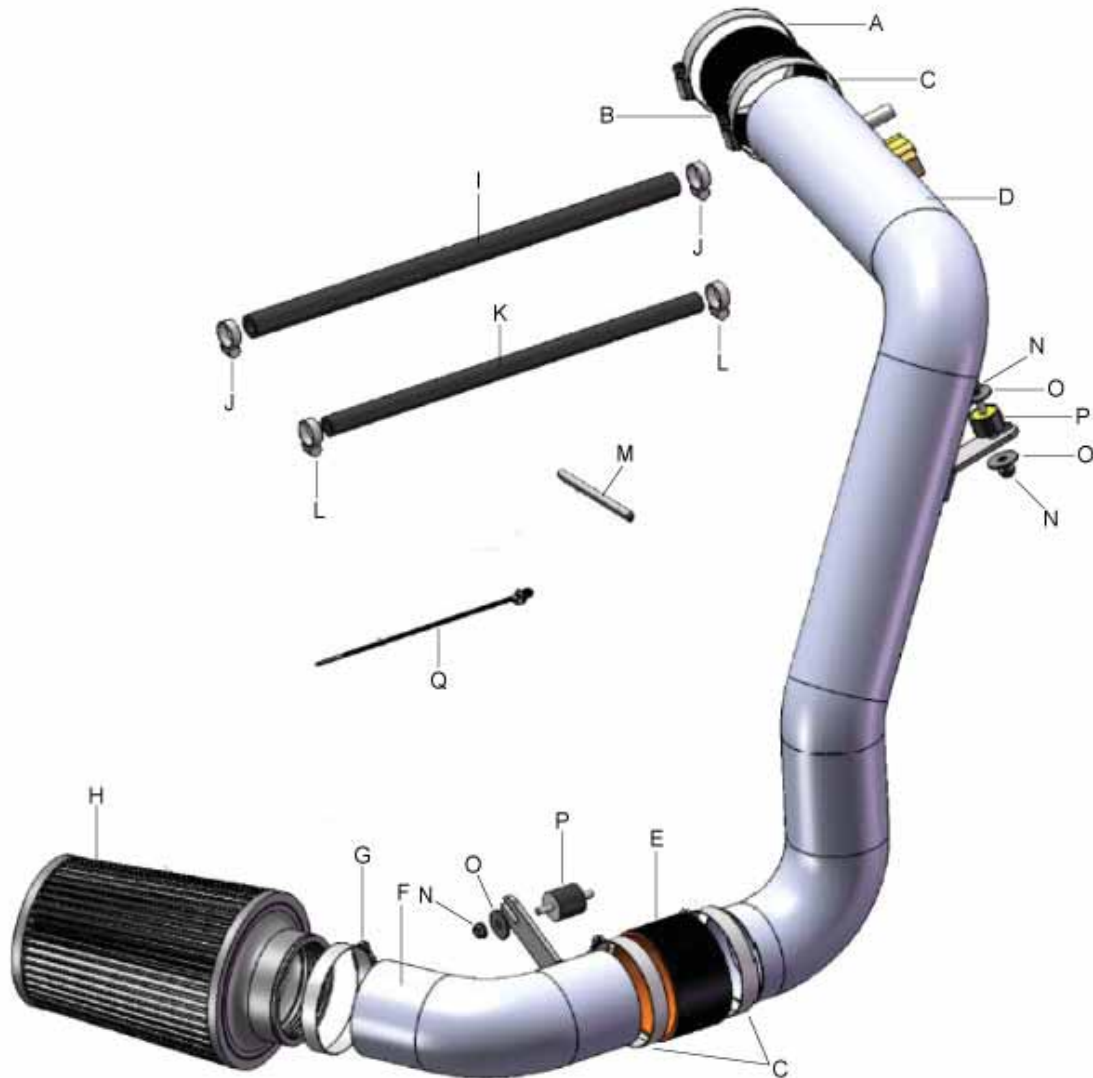
---

2011	HONDA	Accord	V6-3.5L	SEE * NOTE
2008-2010	HONDA	Accord	V6-3.5L	C.A.R.B. E.O. # D-670-6

**Excludes 2008 MY LEV II SULEV 8HNXV03.5BMC and  
2009 MY LEV II SULEV 9HNV03.5EC3 model year vehicles**

## PARTS LIST

Description	Qty.	Part Number
A	1	9444
B	1	5-323
C	3	9452
D	1	2-6831
E	1	5-326
F	1	2-6832
G	1	9456
H	1	21-2113DK
I	1	5-5016
J	2	08407
K	1	5-2014
L	2	4093-5
M	1	8-3005
N	3	444.460.04
O	3	08160
P	2	1228599
Q	1	1-127



Read and understand these instructions **BEFORE** attempting to install this product. Failure to follow installation instructions and not using the provided hardware may damage the intake tube, throttle body and engine.

The AEM® intake system is a performance product that can be used safely during mild weather conditions. During harsh and inclement weather conditions, you must return your vehicle to stock OEM air box and intake tract configuration. Failure to follow these instructions will void your warranty.

## 1. Preparing Vehicle

- a. Make sure vehicle is parked on level surface.
- b. Set parking brake.
- c. If engine has run in the past two hours, let it cool down.
- d. Disconnect negative battery terminal.
- e. Do not discard stock components after removal of the factory system.

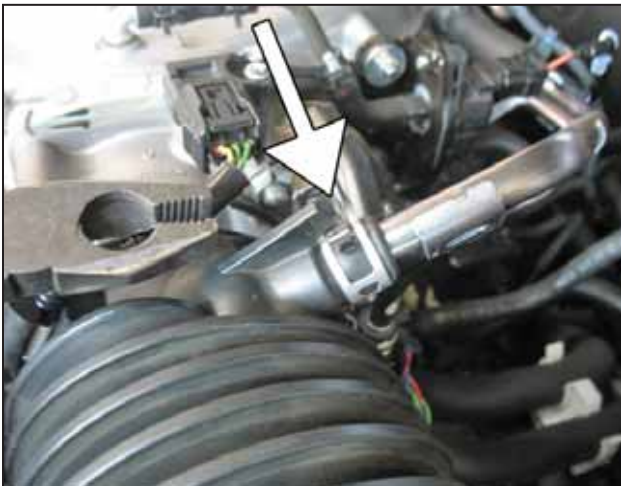
## 2. Removal of stock system



a. Stock air box system installed.



b. Remove the front inlet duct located near the battery.



c. Remove the PCV line from the inlet tube by compressing the spring clip with a pair of pliers, while twisting the tube out of the housing.



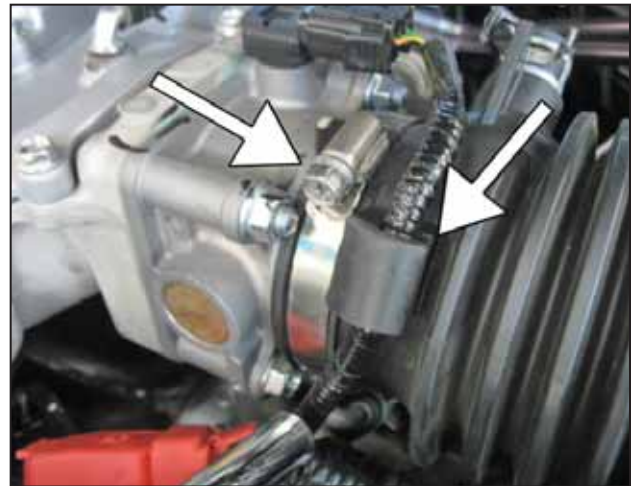
d. Repeat the same process of step 2c, but on the crank case side.



e. **CAUTION: Ensure the engine is completely cool before removing the coolant hose or hot coolant will escape from the cooling system and cause injury or damage. Be sure to capture any lost coolant in a clean container.** Remove the corresponding coolant line that is attached to the PCV line and replace with the provided 5/16" hose (5-2014). Secure with the provided hose clamps (4093-5). There are two ports for the coolant as shown in the middle photo. Use caution, small amounts of coolant will spill out. Be sure to capture any lost coolant in a clean container. Also use a rag to cover any areas where coolant may leak; be sure to clean up any spilled coolant. After the new hose (5-2014) is installed and secured, replace any coolant recovered during the hose removal by replenishing the recovery tank.



f. Remove the battery by removing the battery tie down and disconnecting the positive terminal.



g. Loosen the hose clamp securing the inlet tube to the throttle body. Also, remove the wiring harness from the inlet tube.



h. Unplug the wire harness connection from the MAF sensor.



i. Remove the green clip securing the wire harness to the air box panel.



j. Remove the retaining clip indicated in the picture.



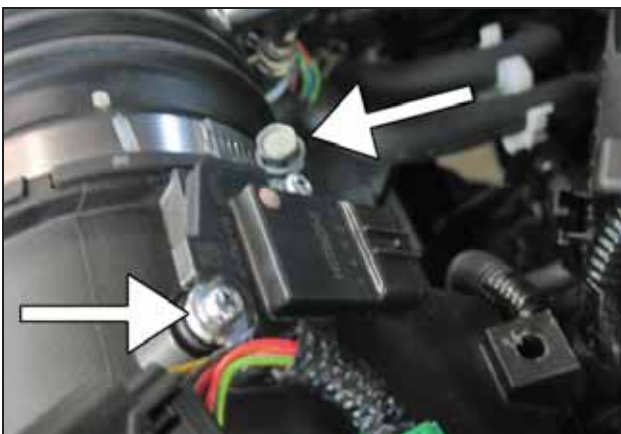
k. Remove the retaining clip on the battery.



l. Remove the 10mm bolt securing the air box near the bottom of the air box.



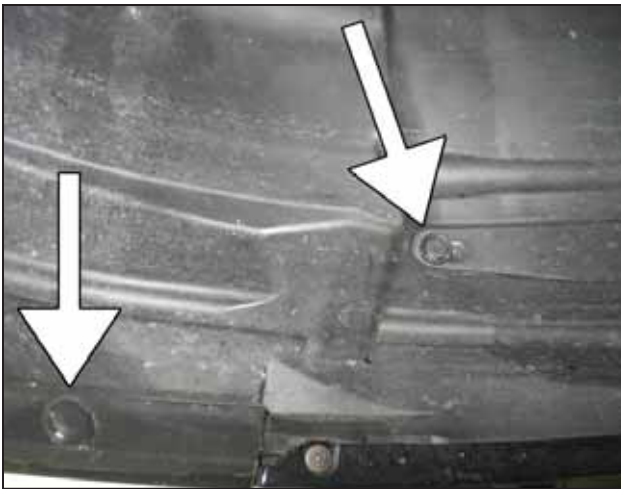
m. Push the air box panel unit out from the dowel and set aside.



n. Remove the MAF sensor from the air box with a Philips screwdriver.



o. Raise the front of the vehicle with a jack. Refer to your owner's manual for proper jack and jack stand placement to properly support vehicle. Support your vehicle using properly rated jack stands before wheel removal or while working under the vehicle. **NEVER WORK UNDER A VEHICLE WITHOUT USING JACK STANDS.** Remove the driver-side front wheel with a 19mm socket.



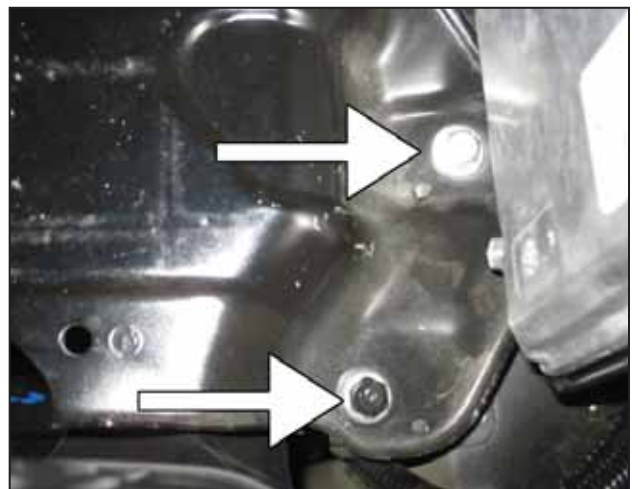
p. Remove the side clips holding the wheel well lining as shown.



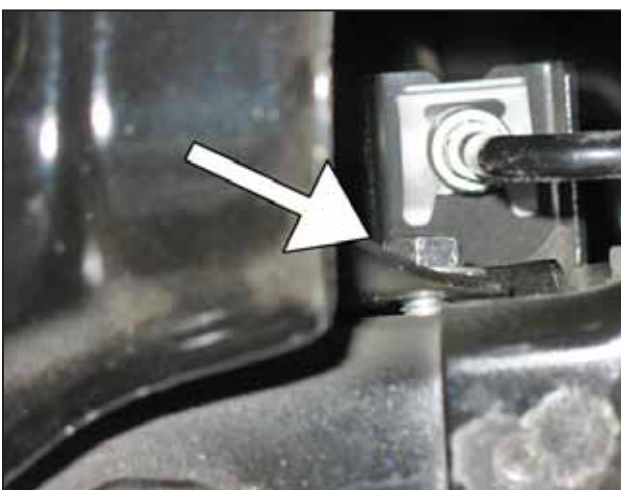
q. Remove the bottom clips holding the bottom plastic tray.



r. Push back the fender liner as shown in the picture.



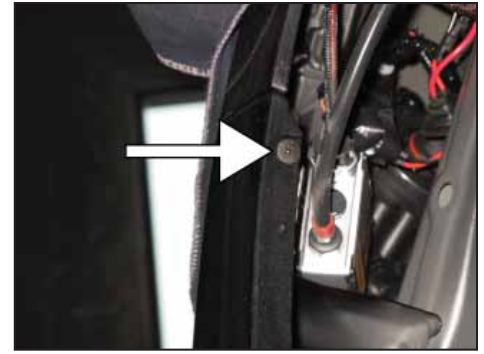
s. Remove the plastic battery tray and remove the two bolts as shown.



t. Locate and remove the two bolts on the side of the vehicle's frame.



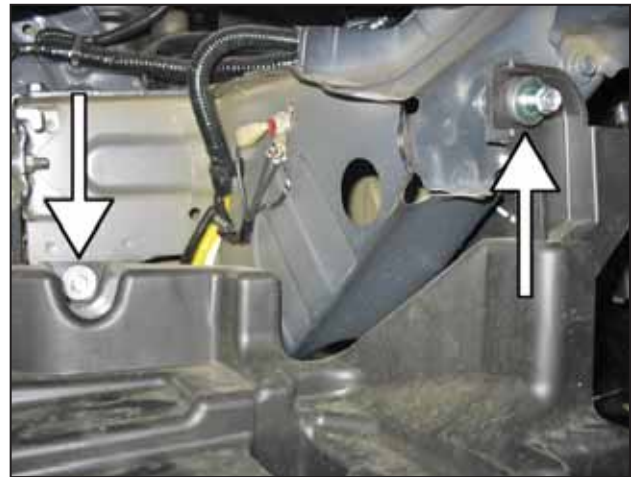
u. Underneath the battery bracket, remove the 10mm bolt that holds the air induction pipe to the battery bracket.



v. Remove the front bumper by removing the side and bottom clips as indicated. Please do not forget to remove the Phillips screw (picture on the far right) from both the left and right side of the vehicle. If the vehicle is equipped with fog lights, unplug them before removing the bumper.



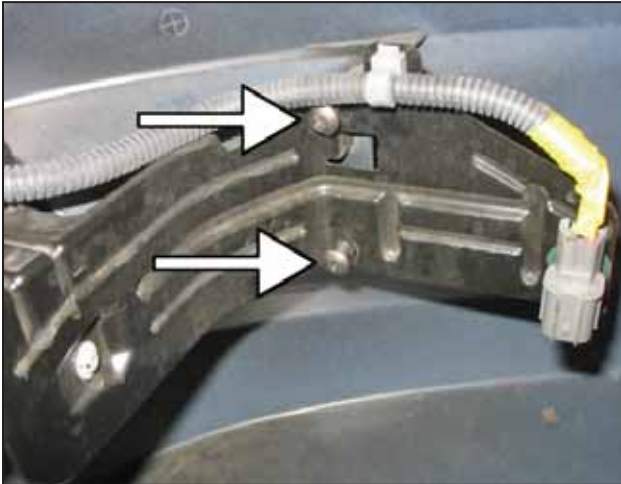
w. Locate and remove the 10mm bolt holding the remainder of the air box system to the chassis.  
**Automatic Transmission Vehicles: Please proceed to step 2x.**  
**Manual Transmission Vehicles: Proceed to section 3 "Installation of AEM® intake system".**



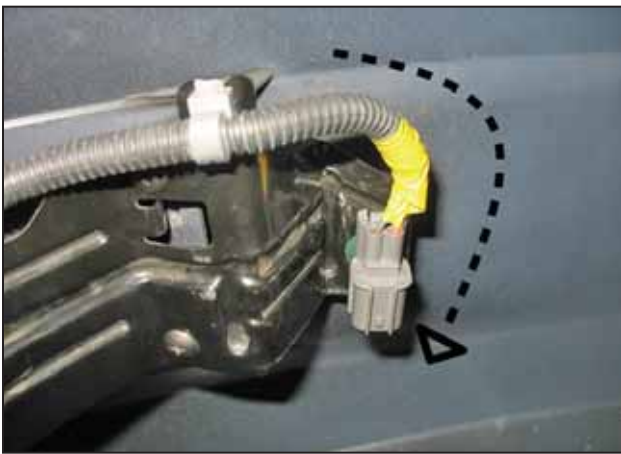
x. Remove two 10mm bolts as indicated.

### 3. Installation of AEM® intake system.

a. When installing the intake system, do not completely tighten the hose clamps or mounting hardware until instructed to do so.



b. Locate the driver side fog light bracket, it is clipped onto the front bumper. Remove the three mounting screws shown in the photos.



c. With the foglight removed from the bumper, bend the fog light bracket in the orientation shown in the diagram.



d. Insert the ½" hose (5-5016) onto the crank case, securing with the 1" hose clamp. Leave the other end open for now.

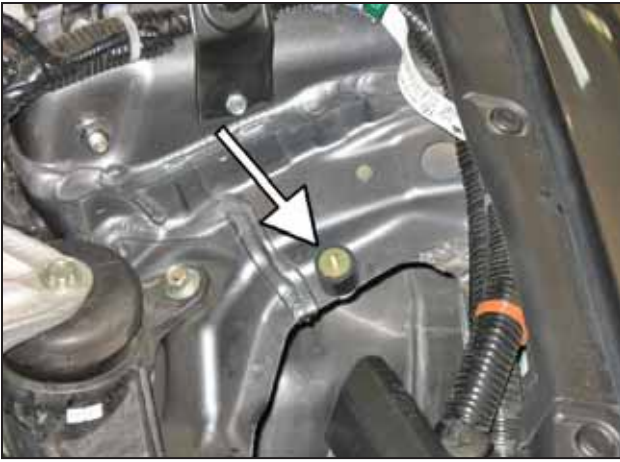


e. Place the reducer coupler (5-323) onto the throttle body with the smaller side over the throttle body. Secure the smaller side of the coupler with the provided hose clamp (9444).



f. Apply the rubber edge trim onto the frame rail as indicated.





g. Insert one of the 1" rubber mounts (1228599) into the indicated area. Secure with a supplied 6mm fender washer and serrated nuts.



h. Insert the upper intake pipe (2-6831) into the previously installed reducer coupler on the throttle body. The end of the intake pipe closest to the PCV nipple and MAF adapter should install into the throttle body coupler. Secure in place with a hose clamp (9452).



i. Slide the upper intake pipe's bracket onto the previously installed rubber mount; loosely secure with a 6mm washer and nut.



j. Install the MAF sensor with the factory hardware; connect the wire harness to the MAF sensor.



k. Connect the other end of the 1/2" hose to the upper intake pipe's nipple and secure with the provided hose clamp (08407).



l. Insert the tab of the zip-tie (1-127) into the hole on the radiator support. Wrap the zip-tie around the condenser coil and tighten so the coil is pulled inward approximately 10mm.



m. Insert the other rubber mount (1228599) into the indicated area.



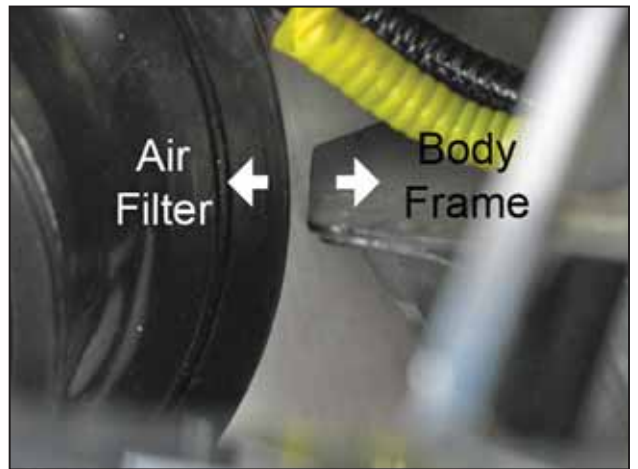
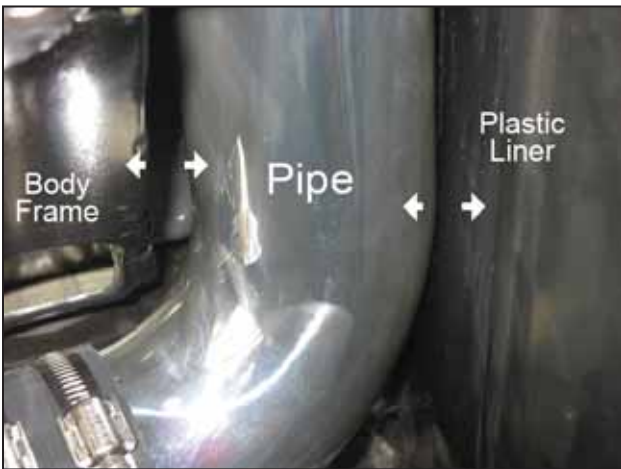
n. Install the air filter element onto the non-bracket side of the lower intake pipe (2-6832). Secure in place with the provided hose clamp (9456).



o. Connect the lower intake pipe to the upper intake pipe with the straight coupler (5-326) and a (9452) hose clamp.



p. Slide the lower intake pipe's bracket onto the rubber mount that was installed in step 3m. Secure the rubber mount with the provided 6mm fender washer and nut.



q. From previous steps 3i and 3p, adjust the brackets to allow clearance in the indicated areas shown in the photos.



r. Install the battery bracket.



s. Install the battery and reconnect the positive lead.



t. Wheel well liner and bottom plastic tray: Install the wheel well liner, bottom plastic tray and any hardware that was removed during steps 2p-2q. **NOTE: Failure to install the fender liner will result in diminished performance and increase the potential for engine damage due to water ingestion in rainy conditions.**



u. Install the driver side wheel using the factory torque specification (see owner's manual).



Factory air box system installed



AEM® intake system installed

#### 4. Reassemble Vehicle

- Position the inlet pipes for the best fitment. Be sure that the pipes or any other components do not contact any part of the vehicle. Tighten the rubber mount, all bolts, and hose clamps.
- Check for proper hood clearance. Re-adjust pipes if necessary and re-tighten them.
- Inspect the engine bay for any loose tools and check that all fasteners that were moved or removed are properly tightened.
- Reconnect negative battery terminal and start engine. Let the vehicle idle for 3 minutes. Perform a final inspection before driving the vehicle.

#### 5. CARB Sticker Placement

- The C.A.R.B. exemption sticker, (attached), must be visible under the hood so that an emissions inspector can see it when the vehicle is required to be tested for emissions. California requires testing every two years, other states may vary.

## 6. Service and Maintenance

- a. AEM Induction Systems requires cleaning the intake system's air filter element every 100,000 miles. When used in dusty or off-road environments, our filters will require cleaning more often. We recommend that you visually inspect your filter once every 25,000 miles to determine if the screen is still visible. When the screen is no longer visible some place on the filter element, it is time to clean it. To clean, purchase our Synthetic air filter cleaner, part number 99-0624 and follow the easy instructions.
- b. Use window cleaner to clean your powder coated AEM® intake tube.

**NOTE: DO NOT USE aluminum polish on powder coated AEM® intake tubes.**