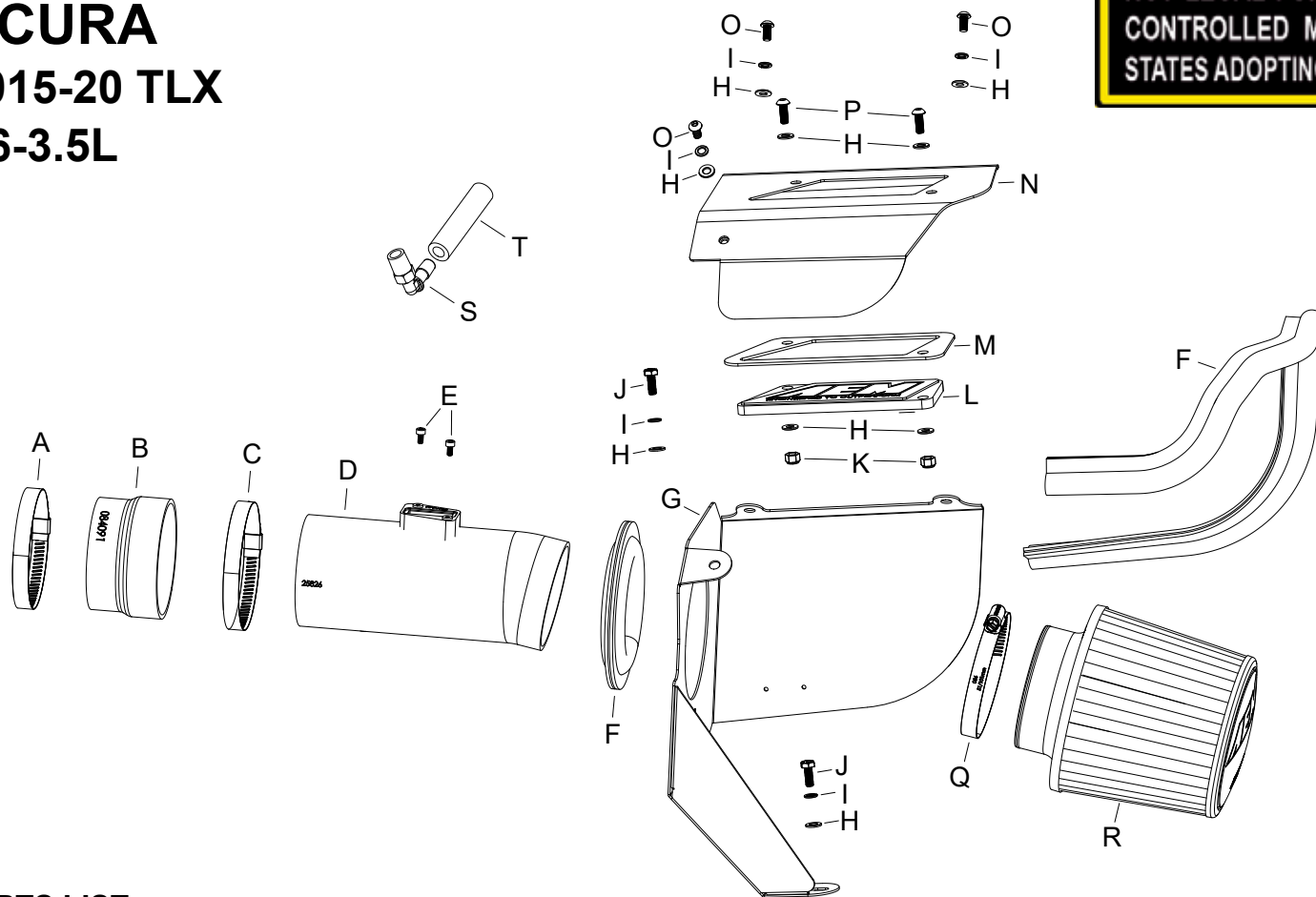




INSTALLATION INSTRUCTIONS

21-871C
ACURA
2015-20 TLX
V6-3.5L

NOT LEGAL FOR SALE OR USE ON ANY POLLUTION CONTROLLED MOTOR VEHICLE IN CALIFORNIA OR STATES ADOPTING CALIFORNIA EMISSION PROCEDURES.



TOOLS NEEDED:

phillips screw driver
 flat blade screw driver
 ratchet
 extension
 10mm socket
 3mm allen key
 4mm allen key
 10mm wrench
 cutters

PARTS LIST:

Description	Qty.	Part #	Description	Qty.	Part #	Description	Qty.	Part #
A HOSE CLAMP; #52	1	08610	H WASHER; 6MM FLAT, SS	9	08269	O BOLT; M6 X 1", 12MM, SS	3	07794
B HOSE; 3.25"ID TO 3.5"ID	1	084091	I WASHER; M6 SPLIT LOCK ZINC	5	1-3025	P SCREW; M6 X 20MM, BUTTON	2	KIT29BHC3060
C HOSE CLAMP; #56	1	08620	J BOLT; M6-1 X 16MM, SS	2	07812	Q 1/2" BNDHOSE CLAMP, 3.15"	1	9456
D TUBE; 3.5"OD X 9"L, AL	1	25826C	K NUT; 6MM NYLOCK, HEXHEAD	2	07512	R AIR FILTER; 3.5" X 5" DRYFLOW	1	21-204DK
E BOLT; M4-.7 X 8MM, ALLEN, SS	2	07733	L PLATE; AEM LOGO, CLEAR	1	8-211	S VENT; 90 DEG, 1/2"HOSE	1	08110FK
F EDGE TRIM; 3/4" BULB	1	102480A	M SPACER; ALUM CLEAR BADGE	1	7-364	T HOSE; 1/2"ID X 3"L	1	5-5003
G HEAT SHIELD, MILD STL.	1	073293	N LID, AEM-21-871C, MILD STL.	1	073294			

Read and understand these instructions **BEFORE** attempting to install this product. Failure to follow installation instructions and not using the provided hardware may damage the intake tube, throttle body and engine.

TO START:

1. Turn off the ignition and disconnect the negative battery cable.

NOTE: Disconnecting the negative battery cable erases pre-programmed electronic memories. Write down all memory settings before disconnecting the negative battery cable. Some radios will require an anti-theft code to be entered after the battery is reconnected. The anti-theft code is typically supplied with your owner's manual. In the event your vehicles anti-theft code cannot be recovered, contact an authorized dealership to obtain your vehicles anti-theft code.



2. Lift the engine cover and remove it from the engine.



3. Disconnect the mass air sensor electrical connection.



4. Release the spring clamp and disconnect the crank case vent line from the factory intake tube. Loosen the hose clamp that secures the factory intake tube to the throttle body.



5. Release the two air filter upper housing clips and remove the upper housing, intake tube and air filter from the vehicle.



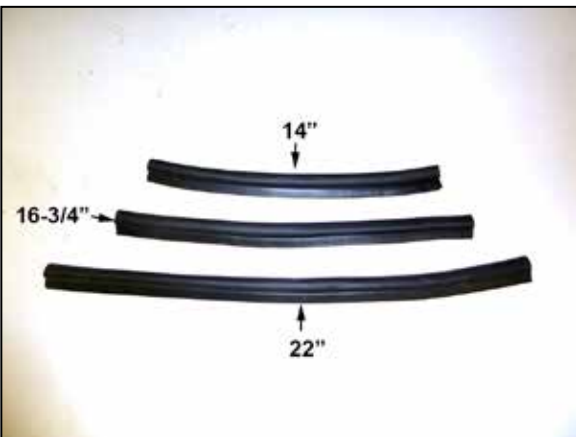
6. Release the two clips that secure the wiring harness to the lower air filter housing and then unhook the harness from the housing.



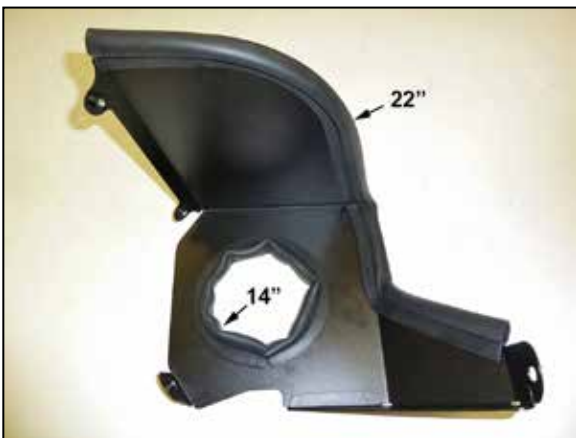
7. Remove the rear air filter housing mounting bolt.



8. Remove the front air filter housing mounting bolt and remove the lower air filter housing from the vehicle. It may be necessary to move or remove the battery hold down to gain access to the bolt. **NOTE: AEM recommends that customers do not discard factory air intake.**



9. Cut the provided edge trim into sections of 14", 16-3/4", 22"



10. Install the 14" and 22" edge trim onto the heat shield as shown.



11. Install the heat shield assembly into the vehicle and secure with the provided hardware.



12. Install the provided coupler (084091) onto the throttle body and secure with the provided hose clamp.



13. Install the 90° vent fitting and provided CCV hose into the AEM® intake tube as shown. **NOTE: Plastic NPT fittings are easy to cross thread. Install the vent fitting "hand" tight, then turn it two complete turns with a wrench.**



14. Remove the mass air sensor from the factory air filter housing and install it into the AEM® intake tube and secure with the provided hardware.



15. Install the intake tube assembly through the heat shield and then into the coupler at the throttle body. Adjust the tube for best fit and then secure with the provided hose clamp.



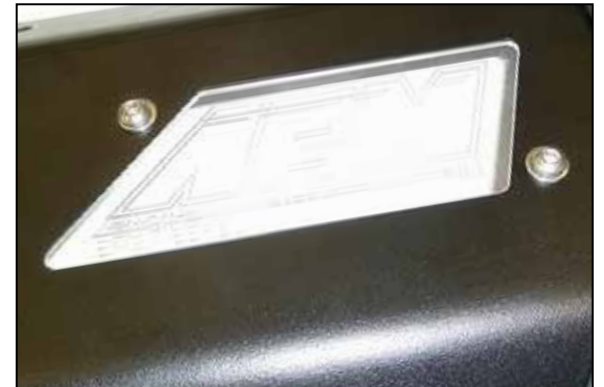
16. Connect the factory CCV hardline to the CCV hose attached to the intake tube.



17. Reconnect the mass air sensor electrical connection.



18. Install the AEM® air filter and secure with the provided hose clamp.



19. Install the AEM® window into the heat shield cover and secure with the provided hardware.



20. Install the remaining edge trim onto the cover.



21. Install the cover assembly onto the heat shield and secure with the provided hardware.

**Reassemble Vehicle**

Position the inlet pipes for the best fitment. Be sure that the pipes or any other components do not contact any part of the vehicle. Tighten the rubber mount, all bolts, and hose clamps. Check for proper hood clearance. Re-adjust pipes if necessary and re-tighten them. Inspect the engine bay for any loose tools and check that all fasteners that were moved or removed are properly tightened. Reconnect negative battery terminal and start engine. Let the vehicle idle for 3 minutes. Perform a final inspection before driving the vehicle.

Service and Maintenance

AEM Induction Systems requires cleaning the intake system's air filter element every 100,000 miles. When used in dusty or off-road environments, our filters will require cleaning more often. We recommend that you visually inspect your filter once every 25,000 miles to determine if the screen is still visible. When the screen is no longer visible some place on the filter element, it is time to clean it. To clean, purchase our Synthetic air filter cleaner, part number 99-0624 and follow the easy instructions. Use window cleaner to clean your powder coated AEM® intake tube.

NOTE: DO NOT USE aluminum polish on powder coated AEM® intake tubes.

NOT LEGAL FOR SALE OR USE ON ANY POLLUTION CONTROLLED MOTOR VEHICLE IN CALIFORNIA OR STATES ADOPTING CALIFORNIA EMISSION PROCEDURES.